

PRODUCT INFORMATION PACKET

Model No: 184TTDW7286

Catalog No: Y454A

Other Purpose Motor, 3 & 1.33 HP, 3 Ph, 60 & 60 Hz, 200-230 & 200-230 V, 1800 & 1800 RPM,
184T Frame, DP



Regal and Marathon are trademarks of Regal Rexnord Corporation or one of its affiliated companies.

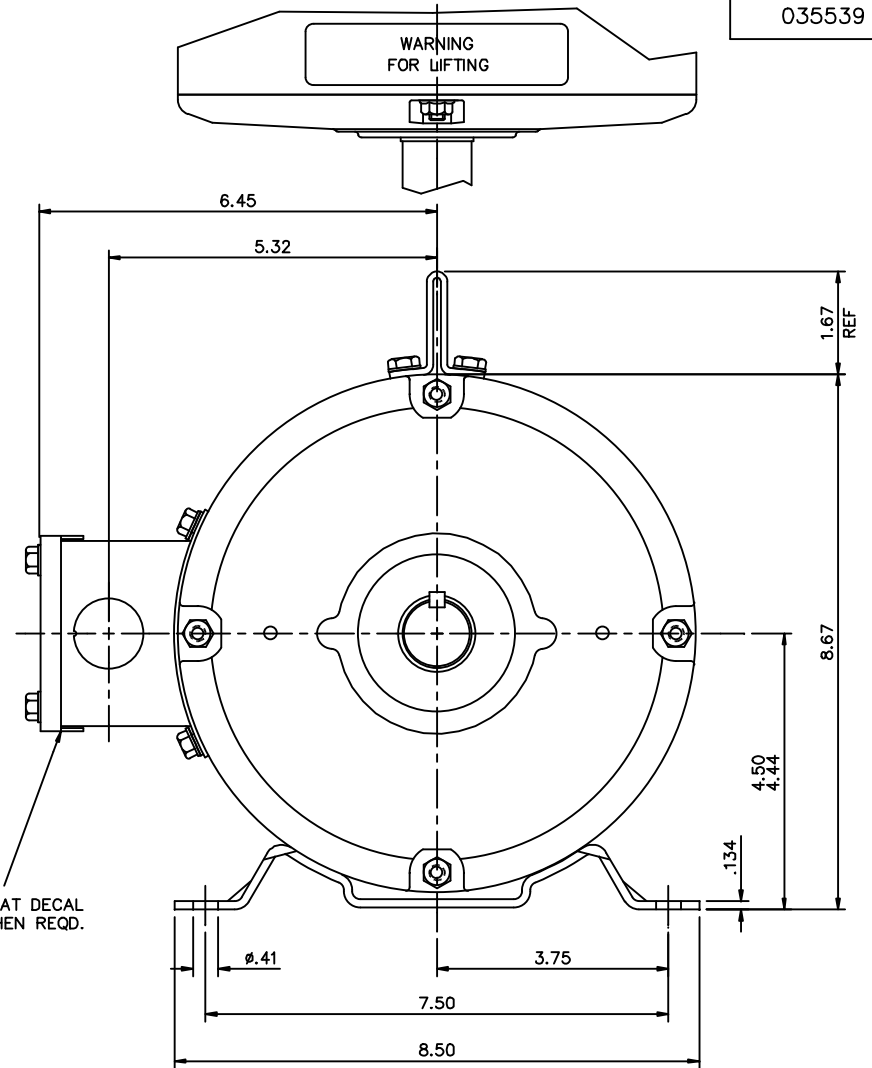
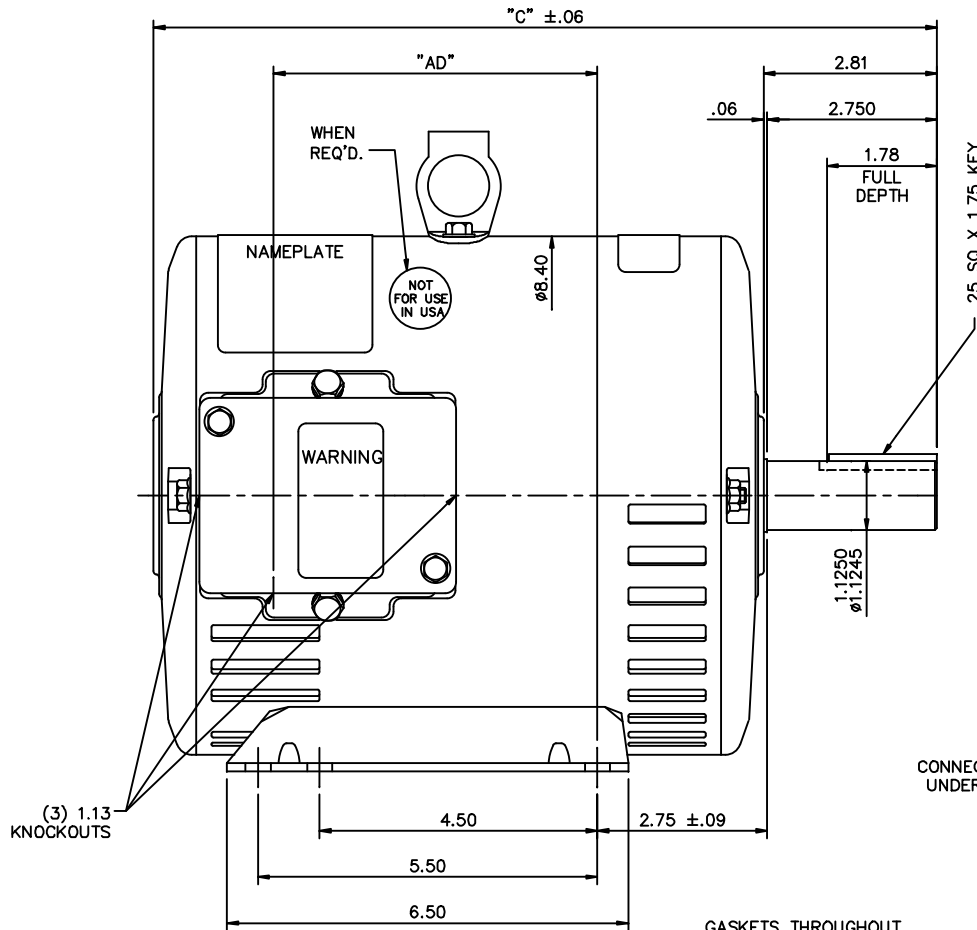
©2023 Regal Rexnord Corporation, All Rights Reserved. MC017097E

Nameplate Specifications

Phase	3	Output HP	3 & 1.33 Hp
Output KW	2.2 & 0.99 kW	Voltage	200-230 & 200-230 V
Speed	1765 & 1170 rpm	Service Factor	1.15 & 1.15
Frame	184T	Enclosure	Drip Proof
Thermal Protection	No Protection	Efficiency	81.5 & 75.5 %
Ambient Temperature	40 °C	Frequency	60 & 60 Hz
Current	9.2-8.6 & 4.6-5 A	Power Factor	80.2
Duty	Continuous	Insulation Class	F
Design Code	2VT	KVA Code	L
Drive End Bearing Size	6206	Opp Drive End Bearing Size	6205
UL	Recognized	CSA	Y
CE	Y	IP Code	22
Number of Speeds	2		

Technical Specifications

Electrical Type	Squirrel Cage Induction Run	Starting Method	Across The Line
Poles	4//6	Rotation	Reversible
Resistance Main	0 Ohms	Mounting	Rigid Base
Motor Orientation	Horizontal	Drive End Bearing	Ball
Opp Drive End Bearing	Ball	Frame Material	Rolled Steel
Shaft Type	T	Overall Length	13.69 in
Frame Length	9.50 in	Shaft Diameter	1.125 in
Shaft Extension	2.81 in	Assembly/Box Mounting	F1 ONLY
Connection Drawing	005046.01ME	Outline Drawing	035539-950



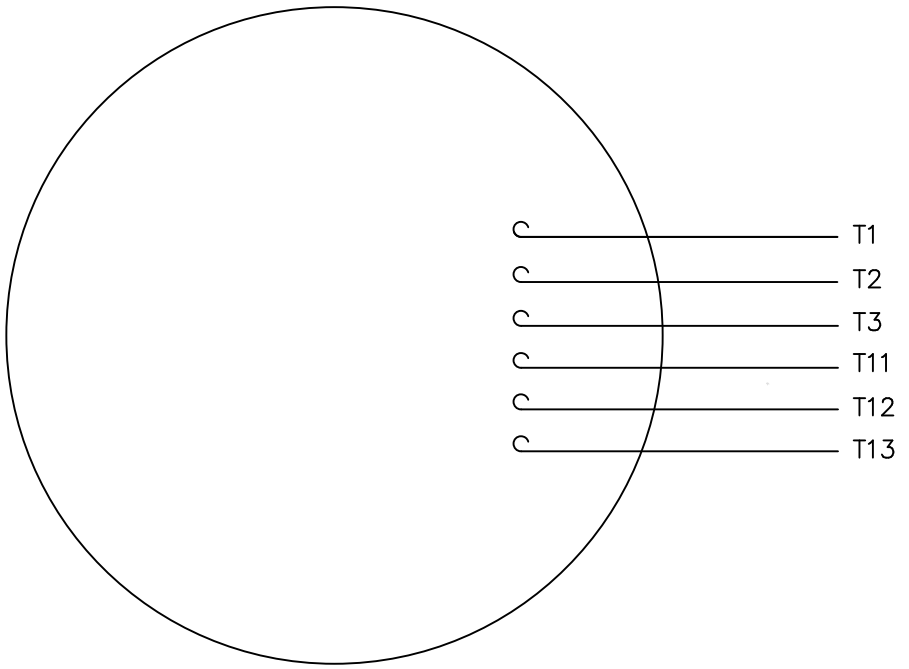
CONNECTION/T-STAT DECAL UNDER COVER WHEN REQ'D.

GASKETS THROUGHOUT

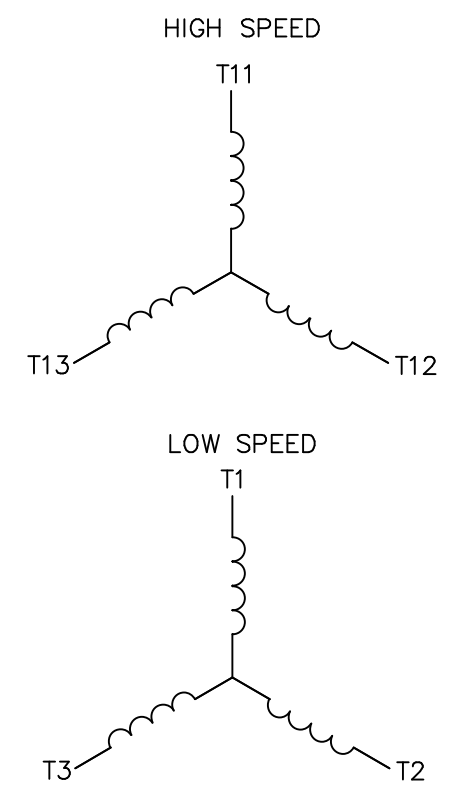
DASH NO.	"C"	"AD"
850	12.69	5.25
900	13.19	5.75
950	13.69	6.25
1000	14.19	6.75
1050	14.69	7.25
1100	15.19	7.75
1150	15.69	8.25

				TOLERANCES UNLESS SPECIFIED				DRAWN YS 07/23/07	
				DEC.	INCHES			CHK	APPD
				.X	±.1			SCALE	1-2
02	SHOWN "NOT FOR USE IN USA" DECAL LOCATION	JD	05/07/12	.XX	±.03	TITLE		OUTLINE - 180T FRAME	REF
01	CHANGED TO NEW CONDUIT BOX 022737	YS	03/19/08	.XXX	±.005	DRIP PROOF - RIGID		035464	
				.XXXX	±.0005	MAT'L		GENERAL PURPOSE	FMF
NO.	REVISION	BY & DATE	CHK	ANG	±1/2'	FINISH		PREV	
THIS DRAWING IN DESIGN AND DETAIL IS OUR PROPERTY AND MUST NOT BE USED EXCEPT IN CONNECTION WITH OUR WORK ALL RIGHTS OF DESIGN AND INVENTION ARE RESERVED THIS IS AN ELECTRONICALLY GENERATED DOCUMENT - DO NOT SCALE THIS PRINT				RFP		CAD FILE	035539	SIZE	DRAWING NO.
				DIST				B	035539
									02

VIEW FROM OUTSIDE OF MOTOR AT SWITCH END.



LINE LEADS



	L1	L2	L3
HIGH SPEED	T11	T12	T13
LOW SPEED	T1	T2	T3

			TOLERANCES UNLESS SPECIFIED	
			DEC.	INCHES
			.X	±.1
			.XX	±.01
			.XXX	±.005
			.XXXX	±.0005
NO.	REVISION	BY & DATE	CHK	ANG ±1/2°



TITLE: EXTERNAL WIRING DIAGRAM TYPE "T" W/O PROTECTOR
 MAT'L. DECAL - 004040 - 2 WDG./2 SPEED 1Y-1Y
 FINISH: MARATHON

DRAWN	SW 06/19/02
CHK	MN 06/19/02
APPD	
SCALE	1=1
REF	
FMF	
PREV	

THIS DRAWING IN DESIGN AND DETAIL IS OUR PROPERTY AND MUST NOT BE USED EXCEPT IN CONNECTION WITH OUR WORK ALL RIGHTS OF DESIGN AND INVENTION ARE RESERVED THIS IS AN ELECTRONICALLY GENERATED DOCUMENT - DO NOT SCALE THIS PRINT		RFP	CAD FILE	00504601ME	SIZE	DRAWING NO.	REV.
		DIST			A	005046-01ME	

CERTIFICATION DATA SHEET

Model#: 184TTDW7286 AA **WINDING#:** T8(4-6)10 NONE 1
CONN. DIAGRAM: 005046.01ME **ASSEMBLY:** F1 ONLY
OUTLINE: 035539-950

TYPICAL MOTOR PERFORMANCE DATA

HP	KW	SYNC. RPM	F.L. RPM	FRAME	ENCLOSURE	KVA CODE	DESIGN
3&1 1/3	2.24&.99	1800	1765&1170	184T	DP	L	2VT

PH	Hz	VOLTS	FL AMPS	START TYPE	DUTY	INSL	S.F	AMB°C	ELEVATION
3	60/60	200-230	9.2-8.6&4.6-5	ACROSS THE LINE	CONTINUOUS	F4	1.15/1.15	40	3300

FULL LOAD EFF: 81.5&75.5	3/4 LOAD EFF: 81	1/2 LOAD EFF: 77.8	GTD. EFF	ELEC. TYPE	NO LOAD AMPS
FULL LOAD PF: 80.2&64	3/4 LOAD PF: 72.7	1/2 LOAD PF: 60.5	0	SQ CAGE IND RUN	4.8

F.L. TORQUE	LOCKED ROTOR AMPS	L.R. TORQUE	B.D. TORQUE	F.L. RISE°C
8.95 LB-FT	71.8	23.9 LB-FT 267	33.7 LB-FT 377	70

SOUND PRESSURE @ 3 FT.	SOUND POWER	ROTOR WK^2	MAX. WK^2	SAFE STALL TIME	STARTS /HOUR	APPROX. MOTOR WGT
0 dBA	10 dBA	0 LB-FT^2	0 LB-FT^2	10 SEC.	0	80 LBS.

***** SUPPLEMENTAL INFORMATION *****

DE BRACKET TYPE	ODE BRACKET TYPE	MOUNT TYPE	ORIENTATION	SEVERE DUTY	HAZARDOUS LOCATION	DRIP COVER	SCREENS	PAINT
STANDARD	STANDARD	RIGID	HORIZONTAL	FALSE	NONE	FALSE	NONE	BLUE (ENAMEL)

BEARINGS		GREASE	SHAFT TYPE	SPECIAL DE	SPECIAL ODE	SHAFT MATERIAL	FRAME MATERIAL
DE	OPE						
BALL	BALL	POLYREX EM	T	NONE	NONE	1144 STRESSPROOF (C-223)	ROLLED STEEL
6206	6205						

THERMO-PROTECTORS				THERMISTORS	CONTROL	SPACE /n HEATERS
THERMOSTATS	PROTECTORS	WDG RTDs	BRG RTDs			
NONE	NOT	NONE	NONE	NONE	FALSE	NONE VOLTS

If Inverter equals NONE, contact factory for further information

INVERTER TORQUE: NONE
INV. HP SPEED RANGE: NONE
ENCODER: NONE
NONE NONE
NONE NONE PPR
BRAKE: NONE NONE
NONE P/N NONE
NONE NONE
NONE FT-LB NONE V NONE Hz

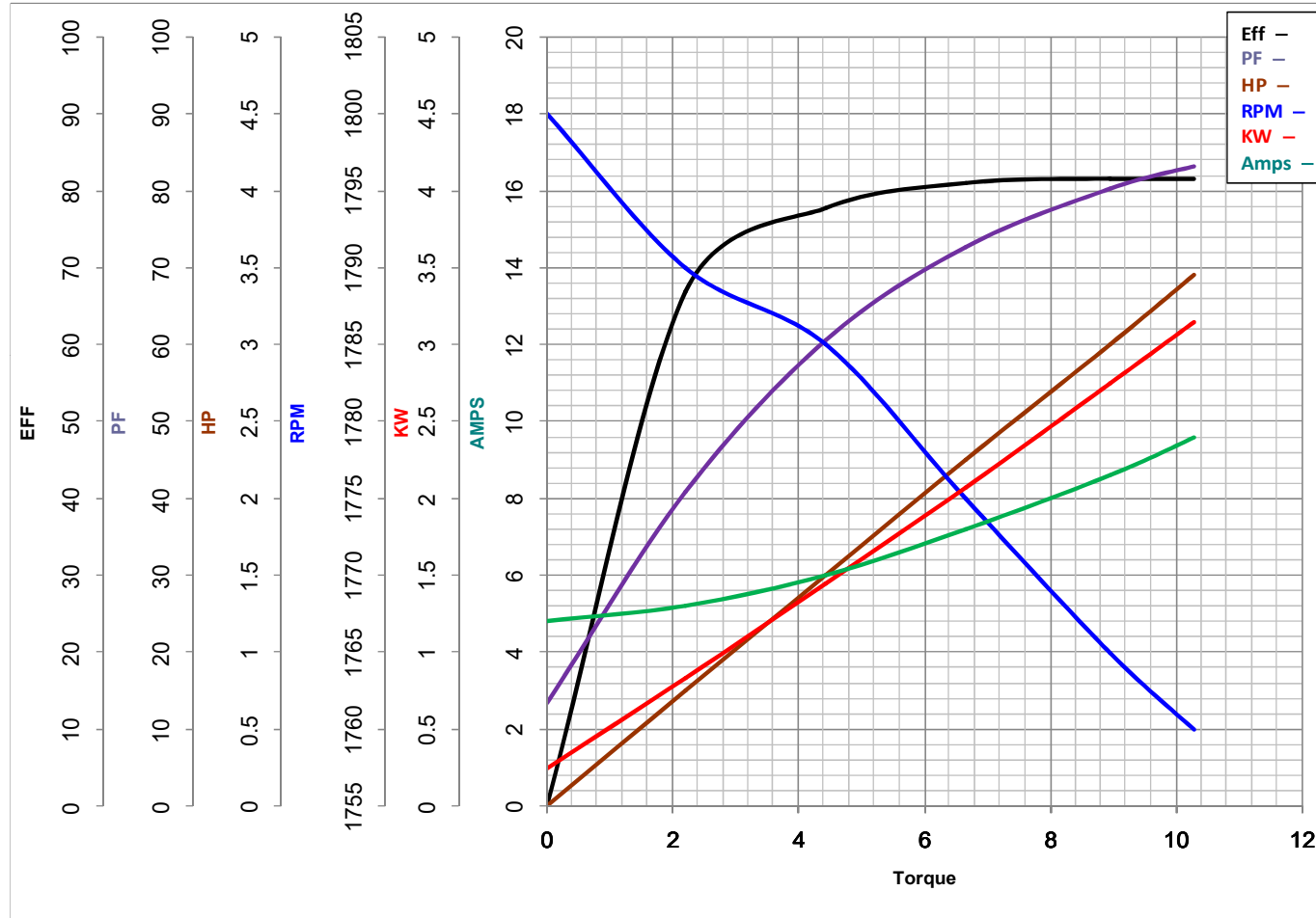
*
N
O
T
E
S
*

DATE: 06/28/2017 06:48:31 AM
 FORM 3531 REV.3 02/07/99
 ** Subject to change without notice.



MARATHON ELECTRIC CORPORATION
TYPICAL PERFORMANCE CURVE for AC MOTOR

Customer _____ Curve at 230 Volts HP 3&1.33 PHASE 3
 Model No 184TTDW7286 60 HZ
3 HP VOLTS 200-230&200-230
 Catalog No Y454A HZ 60&60 RPM 1765&1170



Torque in LB-FT

FL TORQUE	<u>8.95</u>	LB-FT	FL AMPS	<u>9.2-8.6</u>	
BD TORQUE	<u>33.7</u>	LB-FT	PU TORQUE	<u>22.6</u>	LB-FT
LR TORQUE	<u>23.9</u>	LB-FT	LR AMPS	<u>71.8</u>	
WINDING	T8(4-6)10-1		Date	1/10/2019	

EC Declaration of Conformity

The undersigned representing
the manufacturer:

Regal Beloit America
100 East Randolph St.
Wausau, WI 54401

and the authorized representative
established within the Community:

Marathon Electric UK
6F Thistleton Road Ind. Estate
Market Overton
Oakham, Rutland LE15 7PP UK

are committed to providing customers with products that comply with applicable regulations and international protocols to which they are subject, including the requirements of the European Parliament Directive on the Harmonization of the laws relating to electrical equipment designed for use within certain voltage limits (2014/35/EU).

Regal Beloit America declares that the following product(s), to which this declaration relates, are in conformity with the relevant sections of the EC standards listed below.

This statement supersedes any statements previously issued pertaining to the product(s) listed below and is subject to change without notice.

Model No : 184TTDW7286

(Model No. may contain prefix and/or suffix characters)

Catalog No : Y454A

Rework No : N/A

Directives :

Low Voltage Directive 2014/35/EU

Harmonized Standards Used :

EN 60034-1: 2010 (IEC 60034-1: 2010)

EN 60034-5: 2001/A1:2007 (IEC 60034-5: 2000/A1:2006)

Authorized Representative:



Michael A. Logsdon
Vice President, Technology

Authorized Representative in the Community:



Julian Clark
Marketing Engineer

Created on 12/29/2022

CE 22