

# PRODUCT INFORMATION PACKET

**marathon®**  
Motors

Model No: 184TTDW6001

Catalog No: U249A

XRI® General Purpose General Purpose Motor, 7.50 & 7.50 HP, 3 Ph, 60 & 50 Hz, 230/460 & 190/380 V,  
3600 & 3000 RPM, 184T Frame, DP



Regal and Marathon are trademarks of Regal Rexnord Corporation or one of its affiliated companies.

©2023 Regal Rexnord Corporation, All Rights Reserved. MC017097E

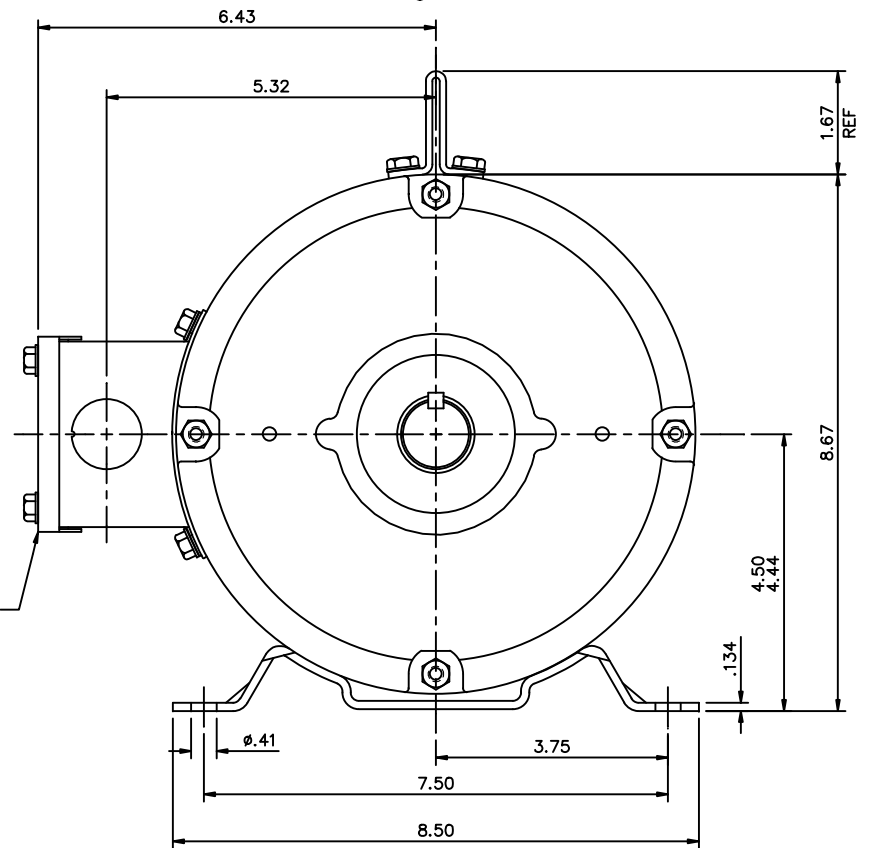
**RegalRexnord**

### Nameplate Specifications

Phase	3	Output HP	7.50 & 7.50 Hp
Output KW	5.6 & 5.6 kW	Voltage	230/460 & 190/380 V
Speed	3515 & 2890 rpm	Service Factor	1.15 & 1.15
Frame	184T	Enclosure	Drip Proof
Thermal Protection	No Protection	Efficiency	88.5 & 86.5 %
Ambient Temperature	40 °C	Frequency	60 & 50 Hz
Current	17.6/8.8 & 21.6/10.8 A	Power Factor	90
Duty	Continuous	Insulation Class	F
Design Code	B	KVA Code	J
Drive End Bearing Size	6206	Opp Drive End Bearing Size	6205
UL	Recognized	CSA	Y
CE	Y	IP Code	22
Number of Speeds	1		

### Technical Specifications

Electrical Type	Squirrel Cage Inverter Rated	Starting Method	Line Or Inverter
Poles	2	Rotation	Reversible
Resistance Main	1.4 Ohms	Mounting	Rigid Base
Motor Orientation	Horizontal	Drive End Bearing	Ball
Opp Drive End Bearing	Ball	Frame Material	Rolled Steel
Shaft Type	T	Overall Length	16.19 in
Frame Length	12.00 in	Shaft Diameter	1.125 in
Shaft Extension	2.81 in	Assembly/Box Mounting	F1/F2 Capable
Connection Drawing	005010.20ME	Outline Drawing	035675ME-1200



DECAL-  
CONNECTION  
& T'STAT.  
UNDER COVER  
WHEN REQUIRED

DASH NO.	"C"	"AD"
850	12.69	5.25
900	13.19	5.75
950	13.69	6.25
1000	14.19	6.75
1050	14.69	7.25
1100	15.19	7.75
1150	15.69	8.25
1200	16.19	8.75

NO.	REVISION	BY & DATE
THIS DRAWING IN DESIGN AND DETAIL IS OUR PROPERTY AND MUST NOT BE USED EXCEPT IN CONNECTION WITH OUR WORK ALL RIGHTS OF DESIGN AND INVENTION ARE RESERVED. <b>THIS IS AN ELECTRONICALLY GENERATED DOCUMENT - DO NOT SCALE THIS PRINT</b>		

TOLERANCES UNLESS SPECIFIED	
	INCHES
.X	±.1
.XX	±.03
.XXX	±.005
.XXXX	±.0005
CHK ANG	±1/2°
RFP	
DIST	NLV

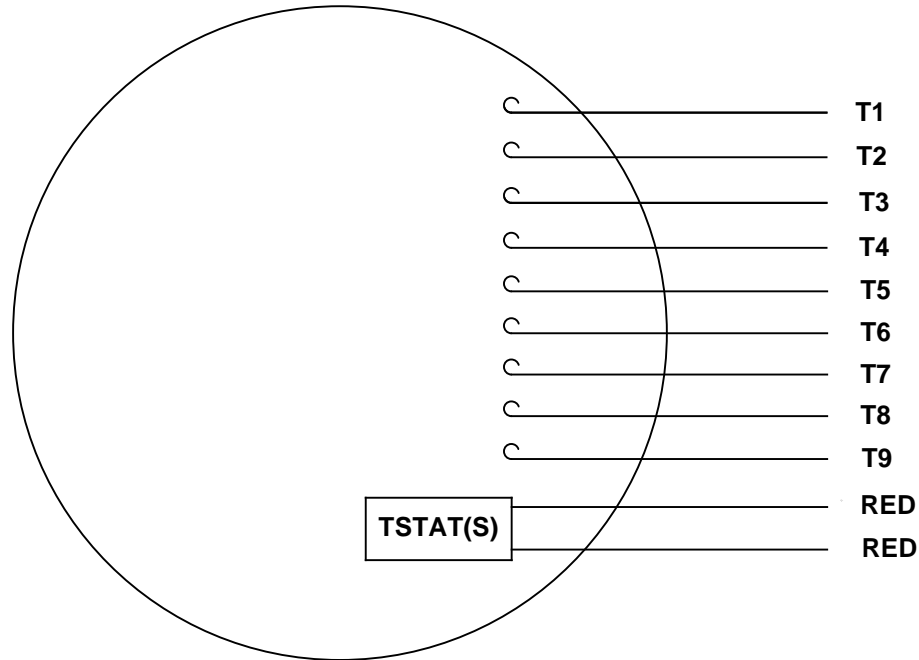


TITLE	OUTLINE - 180T FRAME DRIP PROOF - RIGID
-------	--

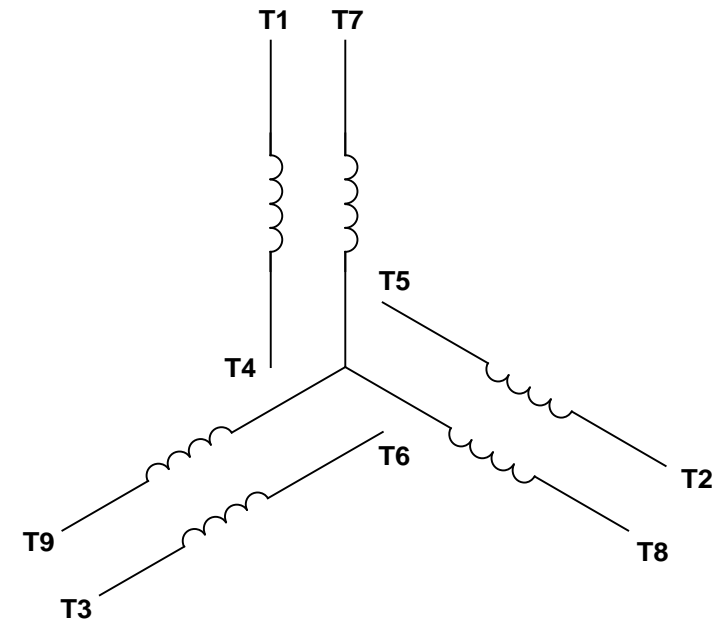
DRAWN	KVN 10/08/2009
CHK	VV 10/08/2009
APPD	VV 10/08/2009
SCALE	1=2
REF	035455
FMF	184TTDW6001

SIZE	DRAWING NO.	REV.
B	035675ME	

VIEW FROM OUTSIDE OF MOTOR AT SWITCH END.



## LINE LEADS



VOLTAGE	L1	L2	L3	JOIN & INSULATE
HIGH	T1	T2	T3	(T4, T7) (T5, T8) (T6, T9)
LOW	T1, T7	T2, T8	T3, T9	T4, T5, T6

RBC PROPRIETARY AND CONFIDENTIAL INFORMATION  
This document is the property of REGAL BELOIT CORPORATION ("RBC") including its subsidiaries and divisions and contains proprietary information of RBC. This document is loaned on the express condition that neither it nor the information contained therein shall be disclosed to others without the express written consent of RBC, and that the information shall be used by the recipient only as approved expressly by RBC. This document shall be returned to RBC upon its request. This document may be subject to certain restrictions under U.S. export control laws and regulations.

				TOLERANCES UNLESS SPECIFIED			DRAWN RDW 04/13/04	
				DEC	INCHES		CHK	
				.X	±.1		APPR	
				.XX	±.01		SCALE	1:1
				.XXX	±.005		REF	
--	REDRAWN IN SOLIDWORKS	VJB 02/08/11		.XXX	±.0005	TITLE EXTERNAL WIRING DIAGRAM 3 PHASE	MAT'L DECAL - 004014 (TSTAT) - 080582	FMF 129027
NO	REVISION	BY & DATE	CHK	ANG	±1/2°	FINISH	PAGE	OF
THIRD ANGLE PROJECTION				RFP	PREV	SIZE	DRAWING NO	REV
				NETWORK FILE NAME 00501020ME		A	005010-20ME	--

## CERTIFICATION DATA SHEET

**Model#:** 184TTDW6001 AA  
**CONN. DIAGRAM:** 005010.20ME  
**OUTLINE:** 035675ME-1200

**WINDING#:** T8293 DR 3  
**ASSEMBLY:** F1/F2 CAPABLE

## TYPICAL MOTOR PERFORMANCE DATA

HP	KW	SYNC. RPM	F.L. RPM	FRAME	ENCLOSURE	KVA CODE	DESIGN
7 1/2&7 1/2	5.60&5.60	3600	3515&2890	184T	DP	J	B

PH	Hz	VOLTS	FL AMPS	START TYPE	DUTY	INSL	S.F	AMB°C	ELEVATION
3	60/50	230/460#190/ 380	17.6/8.8&21.6/ 10.8	LINE OR INVERTER	CONTINUOU S	F4	1.15/1.15	40	3300

FULL LOAD EFF: 88.5&86.5	3/4 LOAD EFF: 89.6	1/2 LOAD EFF: 89.5	GTD. EFF	ELEC. TYPE	NO LOAD AMPS
FULL LOAD PF: 90&93	3/4 LOAD PF: 86.9	1/2 LOAD PF: 79.6	86.5	SQ CAGE INV RATED	5.6 / 2.8

F.L. TORQUE	LOCKED ROTOR AMPS	L.R. TORQUE	B.D. TORQUE	F.L. RISE°C
11.25 LB-FT	160 / 80	33.9 LB-FT 301	41.6 LB-FT 370	15

SOUND PRESSURE @ 3 FT.	SOUND POWER	ROTOR WK^2	MAX. WK^2	SAFE STALL TIME	STARTS /HOUR	APPROX. MOTOR WGT
0 dBA	10 dBA	0.561 LB-FT^2	0.6 LB-FT^2	10 SEC.	2	0 LBS.

## \*\*\* SUPPLEMENTAL INFORMATION \*\*\*

DE BRACKET TYPE	ODE BRACKET TYPE	MOUNT TYPE	ORIENTATION	SEVERE DUTY	HAZARDOUS LOCATION	DRIP COVER	SCREENS	PAINT
STANDARD	STANDARD	RIGID	HORIZONTAL	FALSE	NONE	FALSE	NONE	BLUE (ENAMEL)

BEARINGS		GREASE	SHAFT TYPE	SPECIAL DE	SPECIAL ODE	SHAFT MATERIAL	FRAME MATERIAL
DE	OPE						
BALL	BALL						
6206	6205	POLYREX EM	T	NONE	NONE	AISI 1045 (C-240)	ROLLED STEEL

THERMO-PROTECTORS				THERMISTORS	CONTROL	SPACE /n HEATERS
THERMOSTATS	PROTECTORS	WDG RTDs	BRG RTDs			
TSTATS (N/C)	NOT	NONE	NONE	NONE	FALSE	NONE VOLTS

If Inverter equals NONE, contact factory for further information

INVERTER TORQUE: CONSTANT 10:1  
 INV. HP SPEED RANGE: NONE

ENCODER: NONE  
 NONE NONE  
 NONE NONE PPR

BRAKE: NONE NONE  
 NONE P/N NONE  
 NONE NONE  
 NONE FT-LB NONE V NONE Hz

\*  
N  
O  
T  
E  
S  
\*

DATE: 06/28/2017 06:44:57 AM  
 FORM 3531 REV.3 02/07/99  
 \*\* Subject to change without notice.

## Data Sheet

Date: 6/19/2017

Customer: \_\_\_\_\_

Attention: \_\_\_\_\_

Submitted by: FAREEDA DUDEKULA



184TTDW6001

Submittal

Data @ 460 V

## Motor Load Data

Load	0%	25%	50%	75%	100%	115%	125%	LR	
Current (Amps)	2.79	3.5	4.9	6.8	8.8	10.0	11.0	80.0	
Torque (ft-lb)	0.00	2.75	5.6	8.4	11.3	13.0	14.1	33.9	
RPM	3600	3578	3555	3530	3502	3,486	3474	0	
Efficiency (%)		84.4	89.5	89.6	88.5	88.1	87.2		
P.F. (%)	9.3	59.6	79.6	86.9	90.0	91.1	91.5	0.0	

## Motor Speed Data

	LR	Pull-Up	BD	Rated	Idle					
Speed (RPM)	0	650	2800	3502	3600					
Current (Amps)	80.0	73.6	48.0	8.8	2.79					
Torque (ft-lb)	33.9	30.0	41.6	11.3	0.00					
<div><div>— Efficiency (%) — P.F. (%) — Current (Amps)</div><div>EFFICIENCY (%)</div><div>P.F. (%)</div><div>CURRENT (AMPS)</div><div>LOAD</div></div>						Information Block				
						HP		7.5		
						Sync. RPM		3600		
						Frame		180		
						Enclosure		DP		
						Construction		TDW		
						Voltage		30/460#190/3Ø V		
						Frequency		60 Hz		
						Design		A		
						LR Code letter		J		
						Service Factor		1.15		
						Temp Rise @ FL		15 ° C		
						Duty		CONT		
						Ambient		40 ° C		
						Elevation		1,000 feet		
						Rotor/Shaft wk²		0.56 Lb-Ft²		
						Ref Wdg		T8293 DR		
Sound Pressure @ 1M		0 dBA								
VFD Rating		CONSTANT 10:1								
Outline Dwg		035675ME-1200								
Conn. Diag		005010.20ME								
Additional Specifications:										
0										
0										
EQUIV CKT (OHMS / PHASE)										
R1		R2		X1		X2		Xm		
0.0000		0.0000		0.0000		0.0000		0.0000		

## Speed -Torque Curve

