

# PRODUCT INFORMATION PACKET

**marathon**<sup>®</sup>  
Motors

Model No: 184TTDW17025

Catalog No: 184TTDW17025

Close-Coupled Pump Motor, 7.50 HP, 3 Ph, 60 Hz, 220/380 V, 3600 RPM, 184JM Frame, DP

Regal and Marathon are trademarks of Regal Rexnord Corporation or one of its affiliated companies.

©2023 Regal Rexnord Corporation, All Rights Reserved. MC017097E

**RegalRexnord**



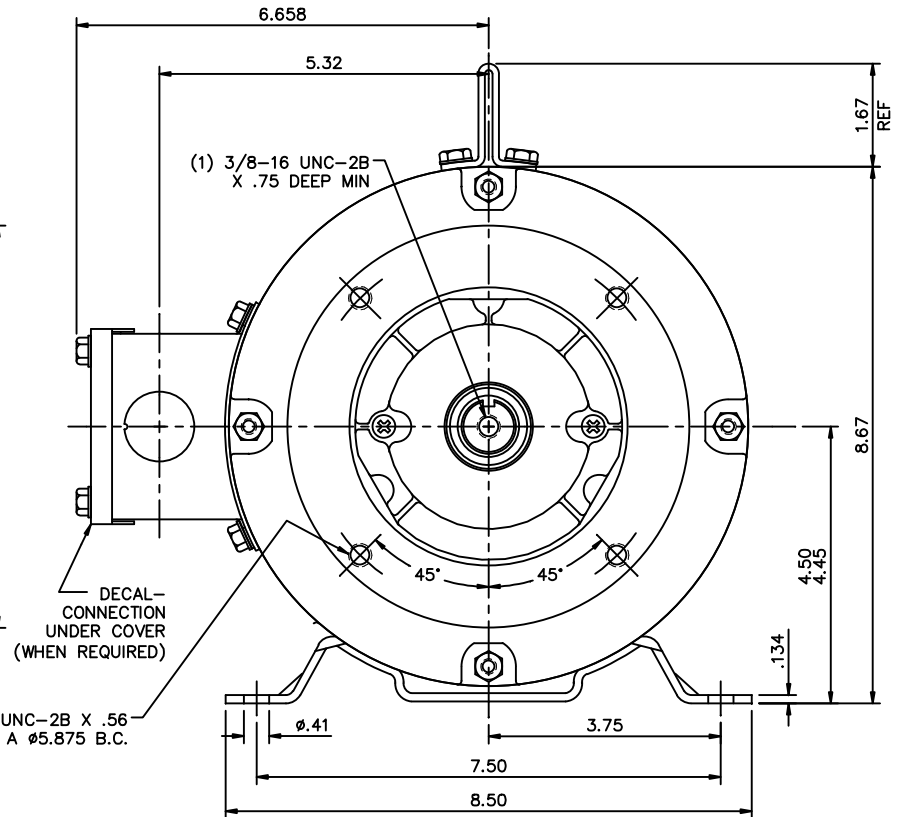
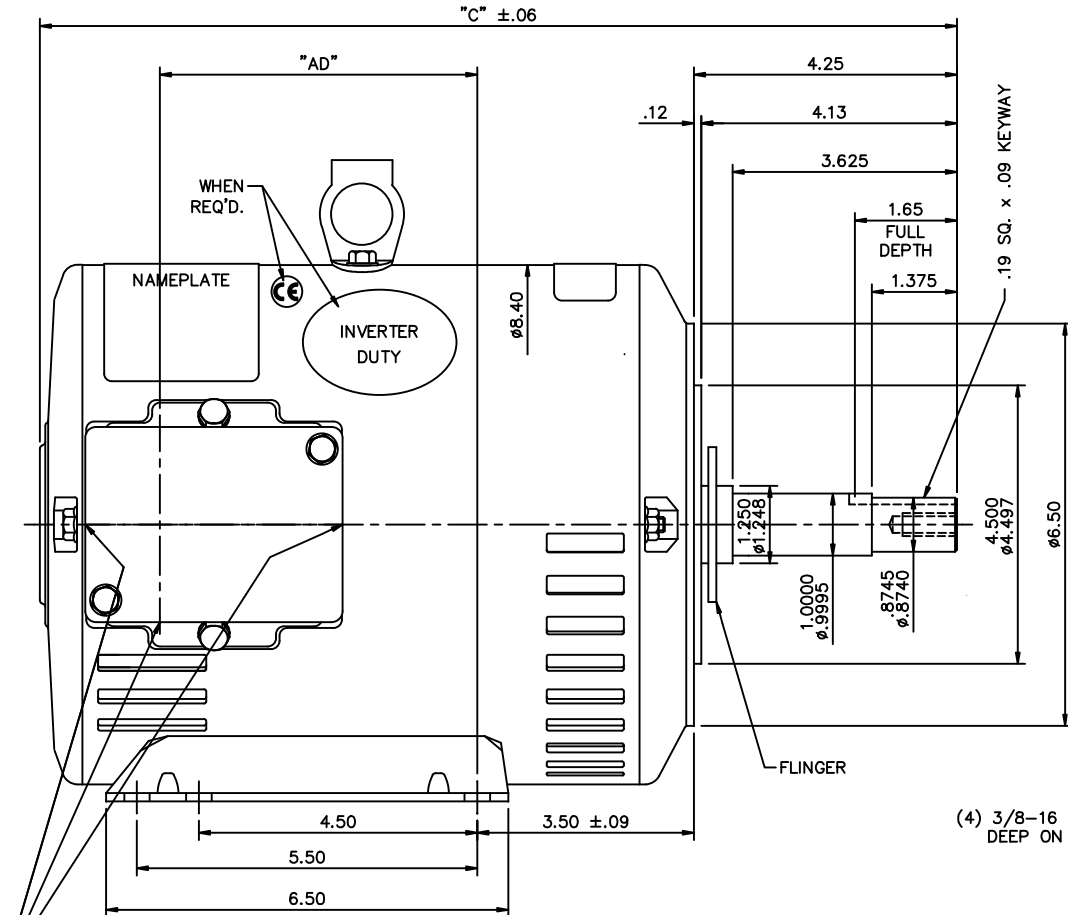
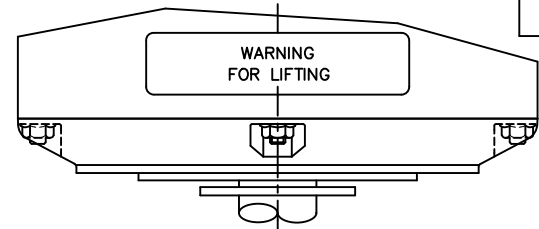
### Nameplate Specifications

Output HP	<b>7.50 Hp</b>	Output KW	<b>5.6 kW</b>
Frequency	<b>60 Hz</b>	Voltage	<b>220/380 V</b>
Current	<b>19.9/11.5 A</b>	Speed	<b>3485 rpm</b>
Service Factor	<b>1.15</b>	Phase	<b>3</b>
Efficiency	<b>84 %</b>	Power Factor	<b>87</b>
Duty	<b>Continuous</b>	Insulation Class	<b>F</b>
Design Code	<b>B</b>	KVA Code	<b>H</b>
Frame	<b>184JM</b>	Enclosure	<b>Drip Proof</b>
Thermal Protection	<b>No Protection</b>	Ambient Temperature	<b>60 °C</b>
Drive End Bearing Size	<b>6207</b>	Opp Drive End Bearing Size	<b>6205</b>
UL	<b>Recognized</b>	CSA	<b>Y</b>
CE	<b>Y</b>	IP Code	<b>22</b>
Number of Speeds	<b>1</b>		

### Technical Specifications

Electrical Type	<b>Squirrel Cage Induction Run</b>	Starting Method	<b>Across The Line</b>
Poles	<b>2</b>	Rotation	<b>Reversible</b>
Resistance Main	<b>0 Ohms</b>	Mounting	<b>Rigid Base</b>
Motor Orientation	<b>Horizontal</b>	Drive End Bearing	<b>Ball</b>
Opp Drive End Bearing	<b>Ball</b>	Frame Material	<b>Rolled Steel</b>
Shaft Type	<b>JM</b>	Shaft Diameter	<b>3.375 in</b>
Assembly/Box Mounting	<b>F1 ONLY</b>		
Outline Drawing	<b>035569-950</b>	Connection Drawing	<b>005017.01ME</b>

This is an uncontrolled document once printed or downloaded and is subject to change without notice. Date Created:01/18/2023



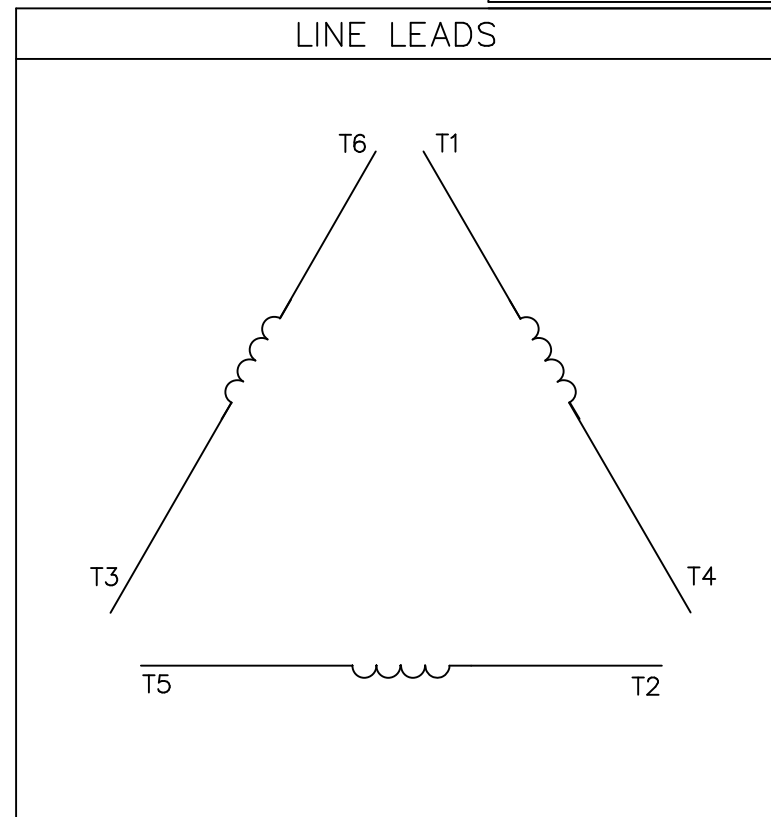
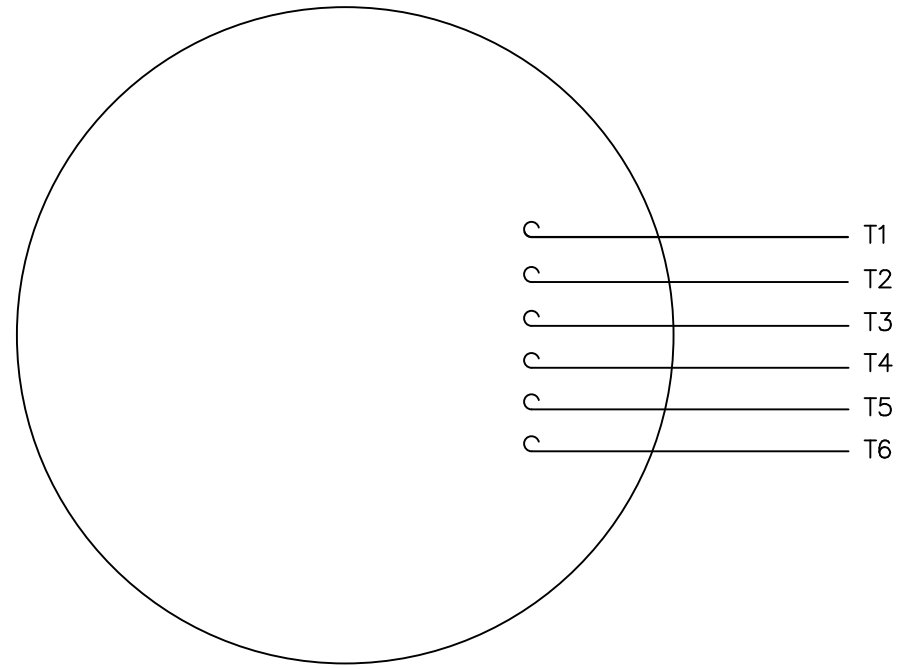
(3) Ø1.13 KNOCKOUTS

GASKETS THROUGHOUT  
 MAXIMUM FACE RUNOUT TO BE .004 T.I.R.  
 MAXIMUM PILOT ECCENTRICITY TO BE .004 T.I.R.  
 PERMISSIBLE SHAFT RUNOUT TO BE .004 T.I.R.

DASH NO.	"C"	"AD"
800	13.82	4.13
850	14.32	4.63
900	14.82	5.13
950	15.32	5.63
1000	15.82	6.13
1050	16.32	6.63
1100	16.82	7.13
1150	17.32	7.63

NO.		REVISION	BY & DATE	CHK	ANG	±1/2"	FINISH	MARATHON ELECTRIC		DRAWN	APPD	SCALE	REF	FMF	PREV	REV.
TOLEANCES UNLESS SPECIFIED																
DEC. INCHES																
.X ±.1																
.XX ±.03							TITLE									
.XXX ±.005							OUTLINE - 180JM FRAME									
.XXXX ±.0005							DRIP PROOF - RIGID "C" - JM PUMP									
RFP							CAD FILE		035569		SIZE		DRAWING NO.		REV.	
DIST							B		035569							

THIS DRAWING IN DESIGN AND DETAIL IS OUR PROPERTY AND MUST NOT BE USED EXCEPT IN CONNECTION WITH OUR WORK ALL RIGHTS OF DESIGN AND INVENTION ARE RESERVED THIS IS AN ELECTRONICALLY GENERATED DOCUMENT - DO NOT SCALE THIS PRINT



	L1	L2	L3	JOIN
HIGH VOLT	T1	T2	T3	T4, T5, T6
LOW VOLT	T1, T6	T2, T4	T3, T5	-----

			TOLERANCES UNLESS SPECIFIED	
			DEC.	INCHES
			.X	±.1
			.XX	±.01
			.XXX	±.005
			.XXXX	±.0005
NO.	REVISION	BY & DATE	CHK	ANG ±1/2"



TITLE  
EXT. WIRING DIAGRAM  
DECAL 004021

MAT'L.  
FINISH

DRAWN KVN 09/26/2007
CHK YS 09/27/2007
APPD
SCALE 1=1
REF 005017-01
FMF 182TDW9907
PREV

THIS DRAWING IN DESIGN AND DETAIL IS OUR PROPERTY AND MUST NOT BE USED EXCEPT IN CONNECTION WITH OUR WORK ALL RIGHTS OF DESIGN AND INVENTION ARE RESERVED THIS IS AN ELECTRONICALLY GENERATED DOCUMENT - DO NOT SCALE THIS PRINT		RFP	CAD FILE	00501701ME	SIZE	DRAWING NO.	REV.
		DIST			A	005017-01ME	