

PRODUCT INFORMATION PACKET

marathon®
Motors

Model No: 184TTDW16326

Catalog No: U427B

XRI® General Purpose General Purpose Motor, 5 HP, 3 Ph, 60 Hz, 200 V, 1800 RPM, 184T Frame, DP



Regal and Marathon are trademarks of Regal Rexnord Corporation or one of its affiliated companies.

©2024 Regal Rexnord Corporation, All Rights Reserved. MC017097E

RegalRexnord

Nameplate Specifications

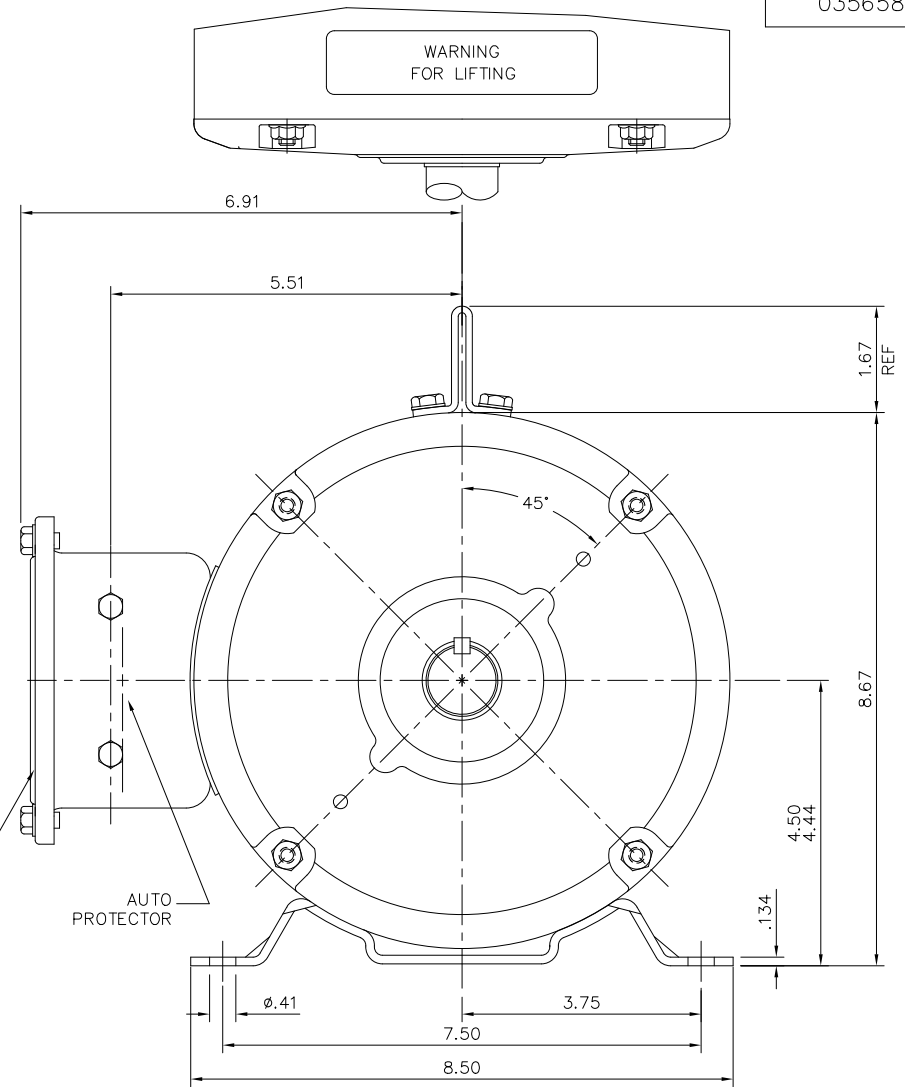
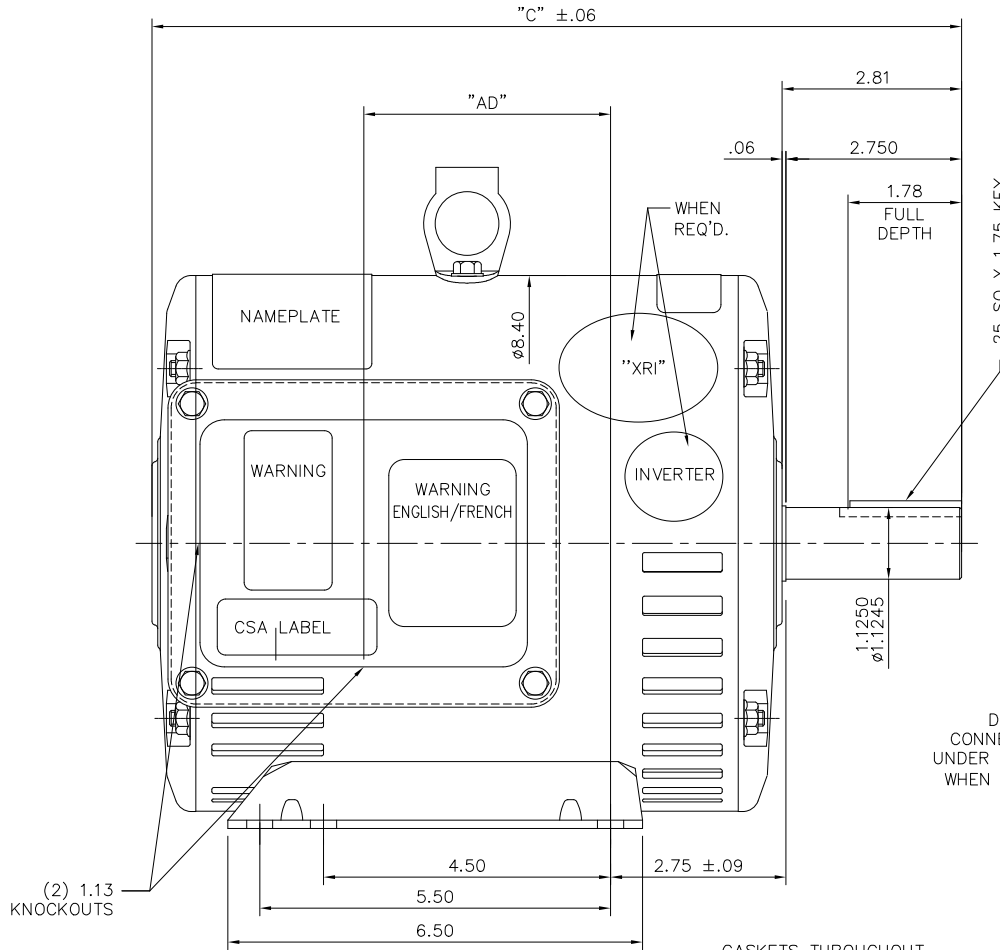
Phase	3	Output HP	5 Hp
Output KW	3.7 kW	Voltage	200 V
Speed	1755 rpm	Service Factor	1.15
Frame	184T	Enclosure	Drip Proof
Thermal Protection	Automatic	Efficiency	89.5 %
Ambient Temperature	40 °C	Frequency	60 Hz
Current	14.5 A	Power Factor	83
Duty	Continuous	Insulation Class	F
Design Code	B	KVA Code	J
Drive End Bearing Size	6206	Opp Drive End Bearing Size	6205
UL	Recognized (Not Protector)	CSA	Y
CE	Y	IP Code	12
Number of Speeds	1		

Technical Specifications

Electrical Type	Squirrel Cage Induction Run	Starting Method	Across The Line
Poles	4	Rotation	Reversible
Resistance Main	2.72 Ohms	Mounting	Rigid Base
Motor Orientation	Horizontal	Drive End Bearing	Ball
Opp Drive End Bearing	Ball	Frame Material	Rolled Steel
Shaft Type	T	Shaft Diameter	1.125 in
Shaft Extension	2.75 in	Assembly/Box Mounting	F1/F2 CAPABLE
Outline Drawing	035658-1000	Connection Drawing	005019.01ME

This is an uncontrolled document once printed or downloaded and is subject to change without notice. Date Created:01/29/2024

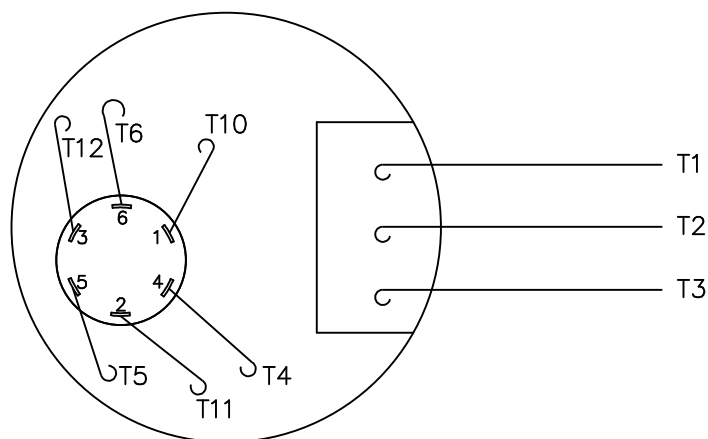
035658



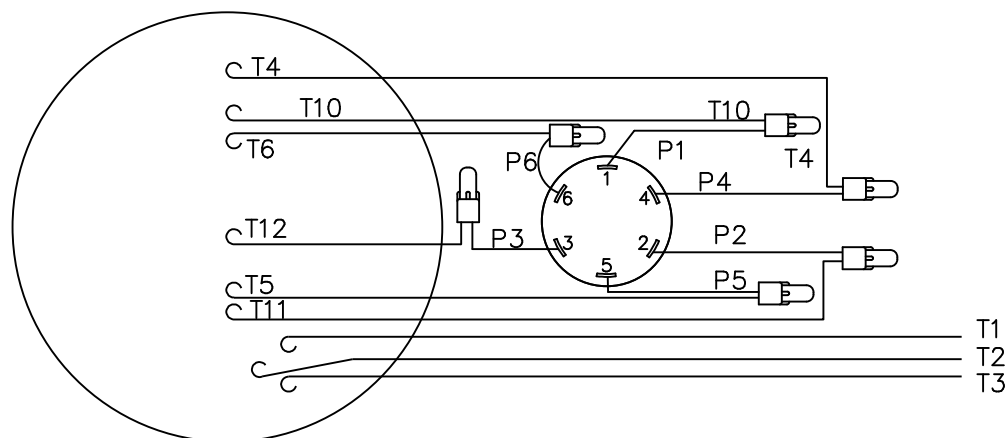
GASKETS THROUGHOUT

DASH NO.	"C"	"AD"
850	12.69	3.87
900	13.19	4.37
950	13.69	4.87
1000	14.19	5.37
1050	14.69	5.87
1100	15.19	6.37
1150	15.69	6.87
1200	16.19	7.37

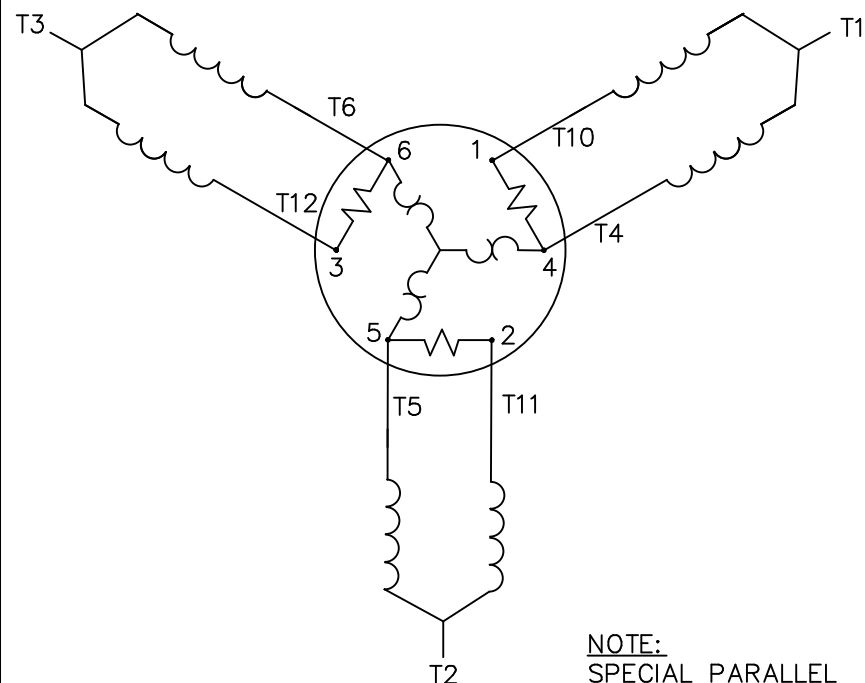
		TOLERANCES UNLESS SPECIFIED		MARATHON ELECTRIC		DRAWN YS 03/20/08	
		DEC.	INCHES			CHK	
		.X	±.1			APPD	
		.XX	±.03	TITLE		SCALE	1=2
H DE & NDE BKT ROTATED TO 45°. AS PER CR-0017346		BBR 1/23/2024	.XXX ±.005	OUTLINE - 180T FRAME		REF	035621
01 AD DIM UPDATED		AK 03/07/2011	.XXXX ±.0005	MAT'L		FMF	182TDDW4074
NO. REVISION		BY & DATE	CHK ANG ±1/2"	FINISH		PREV	
THIS DRAWING IN DESIGN AND DETAIL IS OUR PROPERTY AND MUST NOT BE USED EXCEPT IN CONNECTION WITH OUR WORK ALL RIGHTS OF DESIGN AND INVENTION ARE RESERVED THIS IS AN ELECTRONICALLY GENERATED DOCUMENT - DO NOT SCALE THIS PRINT				RFP	CAD FILE	035658	SIZE
				DIST	NLV		B
						DRAWING NO.	035658
						REV.	H



VIEWS FROM
OUTSIDE OF
MOTOR AT
LEAD END



CAUTION:
LEAD WIRE INSULATION TO EXTEND MINIMUM
OF 1/4" INTO CONNECTOR INSULATION



NOTE:
SPECIAL PARALLEL
CONNECTION. 1/2 LINE
CURRENT THROUGH

T1	T2	T3
L1	L2	L3

			TOLERANCES UNLESS SPECIFIED	
			DEC.	INCHES
			.X	±.1
			.XX	±.01
			.XXX	±.005
01	TITLE BLOCK UPDATED	YS 03/20/08	.XXXX	±.0005
NO.	REVISION	BY & DATE	CHK	ANG
				±1/2"
THIS DRAWING IN DESIGN AND DETAIL IS OUR PROPERTY AND MUST NOT BE USED EXCEPT IN CONNECTION WITH OUR WORK ALL RIGHTS OF DESIGN AND INVENTION ARE RESERVED THIS IS AN ELECTRONICALLY GENERATED DOCUMENT - DO NOT SCALE THIS PRINT			RFP	
			DIST	BRF-NLV

REGAL-BELOIT *Motor Technologies*

TITLE EXTERNAL WIRING DIAGRAM
SINGLE VOLT-3 PHASE,"T" W/ PROTECTOR

MAT'L. DECAL - 004015

FINISH

CAD FILE 00501901ME

SIZE

A

DRAWING NO.

005019-01ME

REV.

01

DRAWN YS 03/20/08

CHK

APPD

SCALE 1=1

REF

FMF 184TTDW4153

PREV