

PRODUCT INFORMATION PACKET

marathon®
Motors

Model No: 184TTDW16083

Catalog No: E918A

XRI® General Purpose General Purpose Motor, 2 HP, 3 Ph, 60 Hz, 200 V, 1200 RPM, 184T Frame, DP



Regal and Marathon are trademarks of Regal Rexnord Corporation or one of its affiliated companies.

©2022 Regal Rexnord Corporation, All Rights Reserved. MC017097E

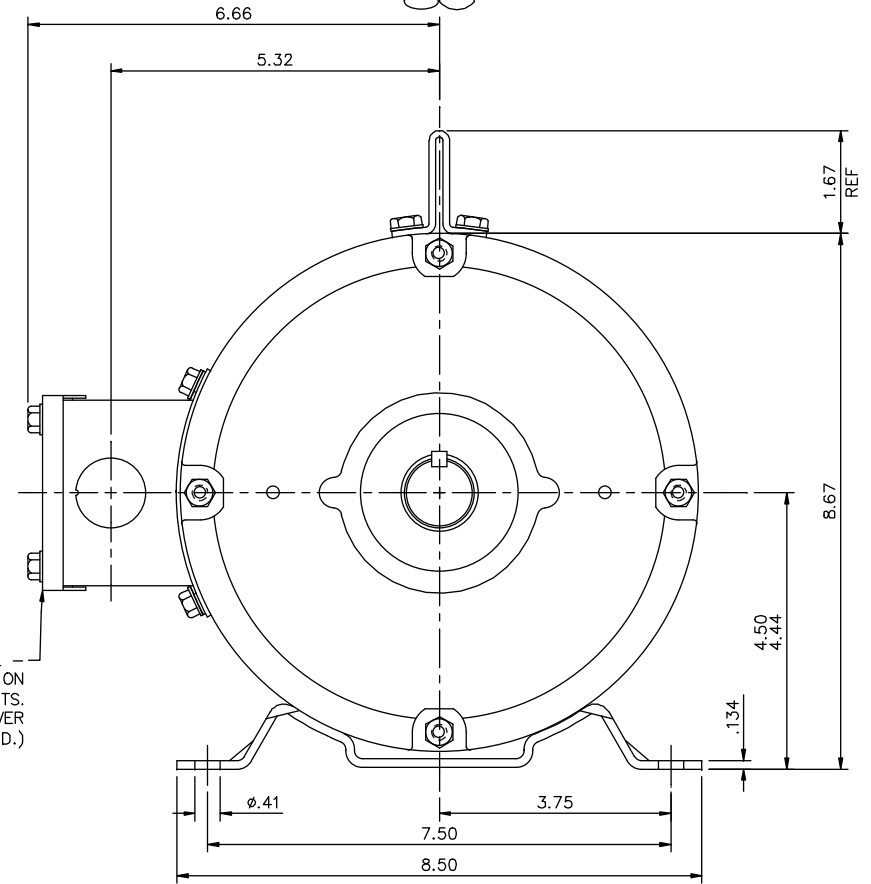
RegalRexnord


Nameplate Specifications

Output HP	2 Hp	Output KW	1.5 kW
Frequency	60 Hz	Voltage	200 V
Current	8.3 A	Speed	1182 rpm
Service Factor	1.15	Phase	3
Efficiency	88.5 %	Power Factor	59
Duty	Continuous	Insulation Class	F
Design Code	B	KVA Code	L
Frame	184T	Enclosure	Drip Proof
Thermal Protection	No Protection	Ambient Temperature	40 °C
Drive End Bearing Size	6206	Opp Drive End Bearing Size	6205
UL	Recognized	CSA	Y
CE	Y	IP Code	12
Number of Speeds	1		

Technical Specifications

Electrical Type	Squirrel Cage Induction Run	Starting Method	Across The Line
Poles	6	Rotation	Reversible
Mounting	Rigid Base	Motor Orientation	Horizontal
Drive End Bearing	Ball	Opp Drive End Bearing	Ball
Frame Material	Rolled Steel	Shaft Type	T
Overall Length	15.19 in	Frame Length	11.00 in
Shaft Diameter	1.125 in	Shaft Extension	2.81 in
Assembly/Box Mounting	F1 ONLY		
Outline Drawing	035530-1100	Connection Drawing	EE7300



				TOLERANCES UNLESS SPECIFIED				DRAWN YS 06/21/07		
				DEC. INCHES				CHK		
				.X ±.1				APPD		
03	REMOVED INV & XRI DECALS AS PER ISSAC 12-5294	GR 10/30/12	SR	.XX	±.03	TITLE OUTLINE – 180T FRAME		SCALE 1=2		
02	ADDED STICKER LOCATIONS PER ECR 91487	JWM 12/04/07		.XXX	±.005	DRIP PROOF – RIGID		REF 035464		
01	TITLE BLOCK WAS LEESON	YS 7/16/2007		.XXXX	±.0005	MAT'L		FMF		
NO.	REVISION	BY & DATE	CHK	ANG	±1/2"	FINISH		PREV		
THIS DRAWING IN DESIGN AND DETAIL IS OUR PROPERTY AND MUST NOT BE USED EXCEPT IN CONNECTION WITH OUR WORK. ALL RIGHTS OF DESIGN AND INVENTION ARE RESERVED. THIS IS AN ELECTRONICALLY GENERATED DOCUMENT – DO NOT SCALE THIS PRINT.				RFP		CAD FILE	035530	SIZE B	DRAWING NO. 035530	REV. 03

THREE PHASE - SINGLE VOLTAGE
MOTOR - CONDUIT BOX @ 'A'

TO REVERSE ROTATION:
INTERCHANGE ANY TWO LINE
LEAD CONNECTIONS

TERMINAL BLOCK WHEN SPECIFIED

IF MOTOR HAS 9 LEADS

T1(U1) T1(U1) T1(U1) → L1

T2(V1) T2(V1) T2(V1) → L2

T3(W1) T3(W1) T3(W1) → L3

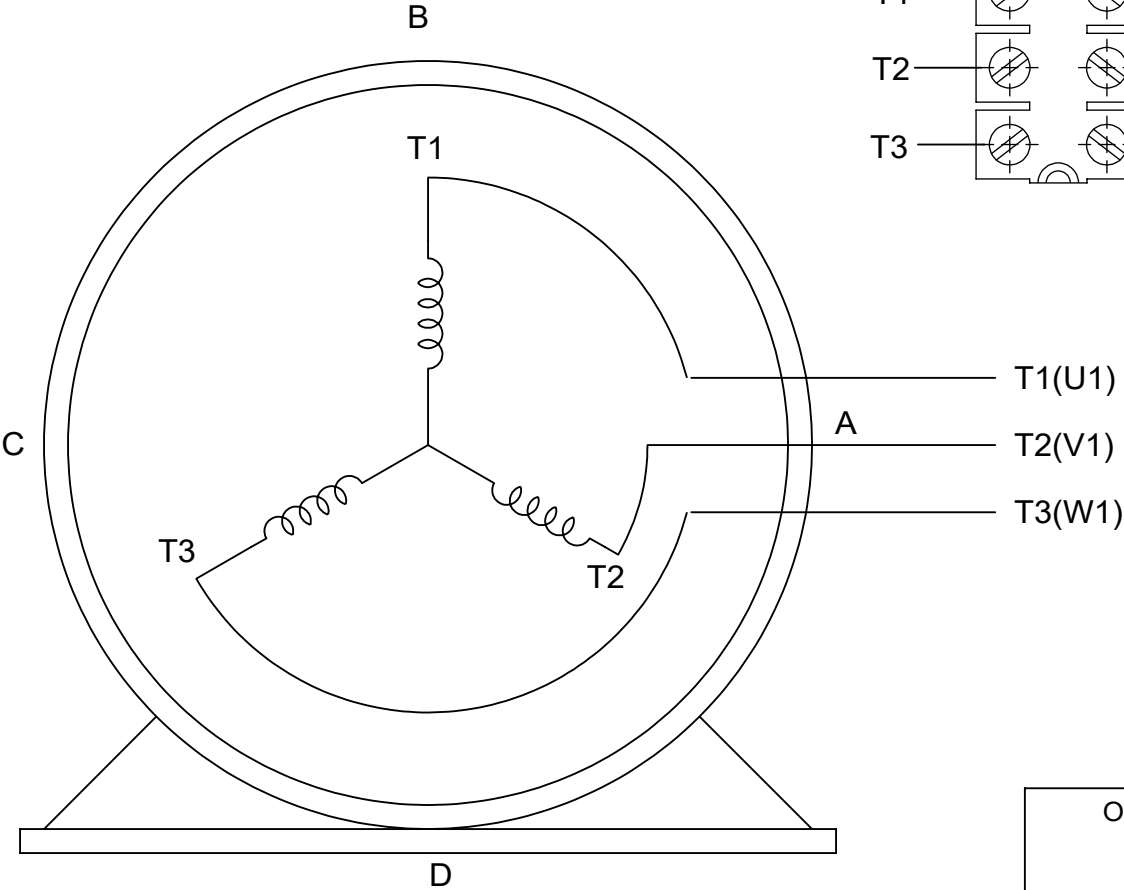
IF MOTOR HAS 6 LEADS

T1(U1) T1(U1) → L1

T2(V1) T2(V1) → L2

T3(W1) T3(W1) → L3

A-9806 DECAL



VIEW OF TERMINAL END

OPTIONAL CORD CONNECTION	
L1	WHITE
L2	RED
L3	BLACK

DRAWING REVISION AC	REVISION BY BS	REV DATE/© DATE 26/07/2022
REQUEST NUMBER CR-0010402	APPROVED BY SN	DATE 26/07/2022
REQUEST NUMBER DESCRIPTION DRAWING UPDATED		
COPYRIGHT (PER REVISION DATE) REGAL BELOIT AMERICA, INC. ALL RIGHTS RESERVED. PROPRIETARY AND CONFIDENTIAL INFORMATION - THIS DOCUMENT IS THE PROPERTY OF REGAL BELOIT AMERICA, INC. ("OWNER") AND CONTAINS OWNER'S PROPRIETARY INFORMATION. ANY PERSON, CORPORATION OR OTHER FIRM RECEIVING IT IS DEEMED, BY RECEIVING IT, TO AGREE THAT IT, AND/OR ANY PART OF IT, SHALL NOT BE DISCLOSED TO ANY PERSON, CORPORATION OR OTHER ENTITY, DUPLICATED, AND/OR USED, EXCEPT AS EXPRESSLY APPROVED IN WRITING IN ADVANCE BY OWNER. THIS DOCUMENT SHALL BE RETURNED TO OWNER UPON REQUEST. IT MAY BE SUBJECT TO CERTAIN RESTRICTIONS UNDER APPLICABLE EXPORT CONTROL LAWS AND REGULATIONS.		

PRIMARY DIMENSIONS ARE INCH
mm DIMENSIONS IN [BRACKETS]
ARE FOR REFERENCE ONLY

DRAWN BY DA
DATE 03-26-1993
APPROVED BY TB
DATE 03-26-1993
REFERENCE
THIRD ANGLE PROJECTION

Regal Beloit America, Inc.	
DESCRIPTION CONNECTION DIAGRAM EXTERNAL - SINGLE VOLTAGE - 3Ø MOTOR	
MATERIAL	PROCESS/FINISH
SIZE A	DRAWING NUMBER EE7300
SHEET 1 OF 1	

CERTIFICATION DATA SHEET

Model#: 184TTDW16083 AA

WINDING#: T8629 NONE 5

CONN. DIAGRAM: EE7300

ASSEMBLY: F1 ONLY

OUTLINE: 035530-1100

TYPICAL MOTOR PERFORMANCE DATA

HP	KW	SYNC. RPM	F.L. RPM	FRAME	ENCLOSURE	KVA CODE	DESIGN
2	1.49	1200	1182	184T	DP	L	B

PH	Hz	VOLTS	FL AMPS	START TYPE	DUTY	INSL	S.F	AMB°C	ELEVATION
3	60	200	8.25	ACROSS THE LINE	CONTINUOU S	F4	1.15	40	3300

FULL LOAD EFF: 88.5	3/4 LOAD EFF: 87.5	1/2 LOAD EFF: 84.6	GTD. EFF	ELEC. TYPE	NO LOAD AMPS
FULL LOAD PF: 59	3/4 LOAD PF: 50.6	1/2 LOAD PF: 38.8	85.5	SQ CAGE IND RUN	5.8

F.L. TORQUE	LOCKED ROTOR AMPS	L.R. TORQUE	B.D. TORQUE	F.L. RISE°C
8.87 LB-FT	56.4	19.5 LB-FT 217	36 LB-FT 400	30

SOUND PRESSURE @ 3 FT.	SOUND POWER	ROTOR WK^2	MAX. WK^2	SAFE STALL TIME	STARTS /HOUR	APPROX. MOTOR WGT
0 dBA	10 dBA	0.561 LB-FT^2	0.6 LB-FT^2	10 SEC.	0	0 LBS.

*** SUPPLEMENTAL INFORMATION ***

DE BRACKET TYPE	ODE BRACKET TYPE	MOUNT TYPE	ORIENTATION	SEVERE DUTY	HAZARDOUS LOCATION	DRIP COVER	SCREENS	PAINT
STANDARD	STANDARD	RIGID	HORIZONTAL	FALSE	NONE	FALSE	NONE	BLUE (ENAMEL)

BEARINGS		GREASE	SHAFT TYPE	SPECIAL DE	SPECIAL ODE	SHAFT MATERIAL	FRAME MATERIAL
DE	OPE						
BALL	BALL						
6206	6205	POLYREX EM	T	NONE	NONE	1144 STRESSPROOF (C-223)	ROLLED STEEL

THERMO-PROTECTORS				THERMISTORS	CONTROL	SPACE /n HEATERS
THERMOSTATS	PROTECTORS	WDG RTDs	BRG RTDs			
NONE	NOT	NONE	NONE	NONE	FALSE	NONE VOLTS

If Inverter equals NONE, contact factory for further information

INVERTER TORQUE: NONE
INV. HP SPEED RANGE: NONE
ENCODER: NONE
NONE NONE
NONE NONE PPR
BRAKE: NONE NONE
NONE P/N NONE
NONE NONE
NONE FT-LB NONE V NONE Hz

*
N
O
T
E
S
*

DATE: 06/28/2017 06:42:53 AM

FORM 3531 REV.3 02/07/99

** Subject to change without notice.

Data Sheet

Date: 6/20/2017

Customer: _____

Attention: _____

Submitted by: FAREEDA DUDEKULA



184TTDW16083

Submittal

Data @ 200 V

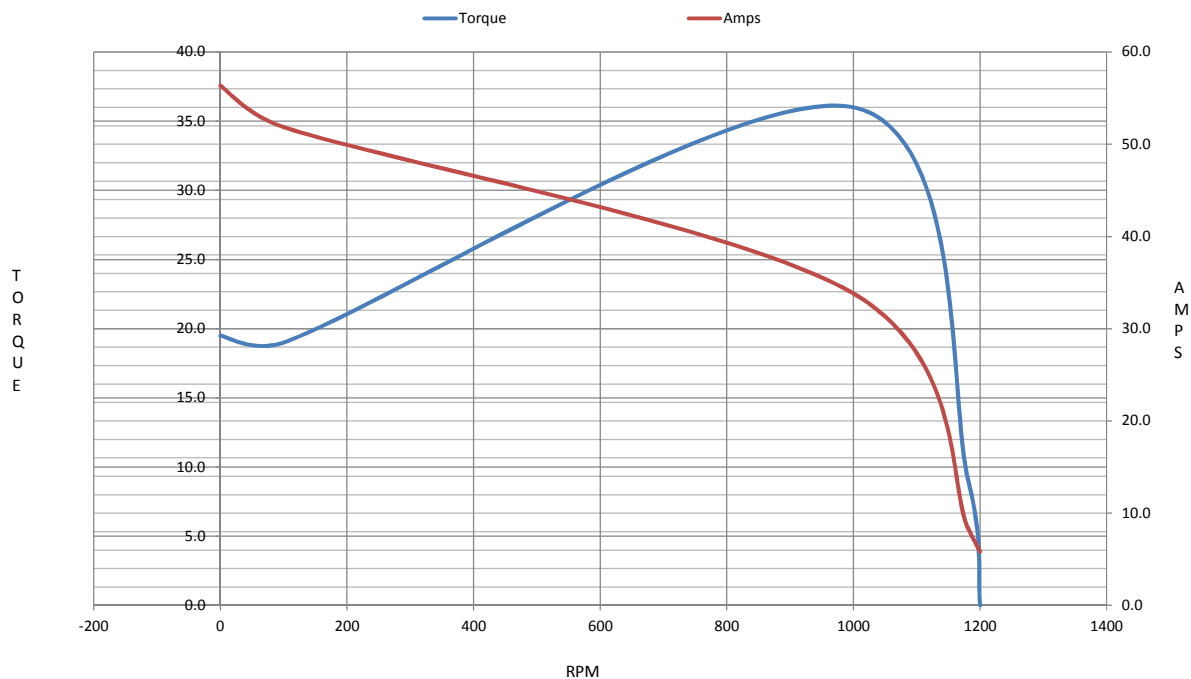
Motor Load Data

Load	0%	25%	50%	75%	100%	115%	125%	LR	
Current (Amps)	5.8	6.1	6.6	7.3	8.2	9.0	9.3	56.4	
Torque (ft-lb)	0.00	2.21	4.4	6.7	8.9	10.1	11.2	19.5	
RPM	1200	1196	1192	1186	1182	1,180	1176	0	
Efficiency (%)		75.4	84.6	87.5	88.5	88.5	88.3		
P.F. (%)	7.4	23.7	38.8	50.6	59.0	63.0	65.2	0.0	

Motor Speed Data

	LR	Pull-Up	BD	Rated	Idle																																						
Speed (RPM)	0	100	1000	1182	1200																																						
Current (Amps)	56.4	51.8	33.8	8.2	5.8																																						
Torque (ft-lb)	19.5	19.0	36.0	8.9	0.00																																						
<div><div>Efficiency (%)</div><div>P.F. (%)</div><div>Current (Amps)</div></div> <table><caption>Graph Data Points (Estimated)</caption><thead><tr><th>Load (%)</th><th>Efficiency (%)</th><th>P.F. (%)</th><th>Current (Amps)</th></tr></thead><tbody><tr><td>0</td><td>-</td><td>7.4</td><td>5.8</td></tr><tr><td>25</td><td>75.0</td><td>-</td><td>6.0</td></tr><tr><td>50</td><td>85.0</td><td>35.0</td><td>7.0</td></tr><tr><td>75</td><td>87.0</td><td>50.0</td><td>8.0</td></tr><tr><td>100</td><td>88.0</td><td>60.0</td><td>9.0</td></tr><tr><td>125</td><td>87.5</td><td>65.0</td><td>9.3</td></tr></tbody></table>						Load (%)	Efficiency (%)	P.F. (%)	Current (Amps)	0	-	7.4	5.8	25	75.0	-	6.0	50	85.0	35.0	7.0	75	87.0	50.0	8.0	100	88.0	60.0	9.0	125	87.5	65.0	9.3										
						Load (%)	Efficiency (%)	P.F. (%)	Current (Amps)																																		
						0	-	7.4	5.8																																		
						25	75.0	-	6.0																																		
						50	85.0	35.0	7.0																																		
						75	87.0	50.0	8.0																																		
						100	88.0	60.0	9.0																																		
						125	87.5	65.0	9.3																																		
						HP					2.0																																
						Sync. RPM					1200																																
						Frame					180																																
						Enclosure					DP																																
						Construction					TDW																																
						Voltage					200 V																																
						Frequency					60 Hz																																
						Design					B																																
						LR Code letter					L																																
						Service Factor					1.15																																
						Temp Rise @ FL					30 ° C																																
						Duty					CONT																																
Ambient					40 ° C																																						
Elevation					1,000 feet																																						
Rotor/Shaft wk ²					0.56 Lb-Ft ²																																						
Ref Wdg					T8629 NONE																																						
Sound Pressure @ 1M					0 dBA																																						
VFD Rating					NONE																																						
Outline Dwg					035530-1100																																						
Conn. Diag					EE7300																																						
Additional Specifications:																																											
0																																											
0																																											
EQUIV CKT (OHMS / PHASE)																																											
R1		R2		X1		X2		Xm																																			
0.0000		0.0000		0.0000		0.0000		0.0000																																			

Speed -Torque Curve



EC Declaration of Conformity

The undersigned representing
the manufacturer:

Regal Beloit America
100 East Randolph St.
Wausau, WI 54401

and the authorized representative
established within the Community:

Marathon Electric UK
6F Thistleton Road Ind. Estate
Market Overton
Oakham, Rutland LE15 7PP UK

are committed to providing customers with products that comply with applicable regulations and international protocols to which they are subject, including the requirements of the European Parliament Directive on the Harmonization of the laws relating to electrical equipment designed for use within certain voltage limits (2014/35/EU).

Regal Beloit America declares that the following product(s), to which this declaration relates, are in conformity with the relevant sections of the EC standards listed below.

This statement supersedes any statements previously issued pertaining to the product(s) listed below and is subject to change without notice.

Model No : 184TTDW16083

(Model No. may contain prefix and/or suffix characters)

Catalog No : E918A

Rework No : N/A

Directives :

Low Voltage Directive 2014/35/EU

Harmonized Standards Used :

EN 60034-1: 2010 (IEC 60034-1: 2010)

EN 60034-5: 2001/A1:2007 (IEC 60034-5: 2000/A1:2006)

Authorized Representative:



Michael A. Logsdon
Vice President, Technology

Authorized Representative in the Community:



Julian Clark
Marketing Engineer

Created on 09/01/2022

CE 22