

PRODUCT INFORMATION PACKET

marathon®
Motors

Model No: 184TTDW16076

Catalog No: U915

XRI® General Purpose General Purpose Motor, 2 HP, 3 Ph, 60 Hz, 575 V, 1200 RPM, 184T Frame, DP



Regal and Marathon are trademarks of Regal Rexnord Corporation or one of its affiliated companies.

©2022 Regal Rexnord Corporation, All Rights Reserved. MC017097E

RegalRexnord

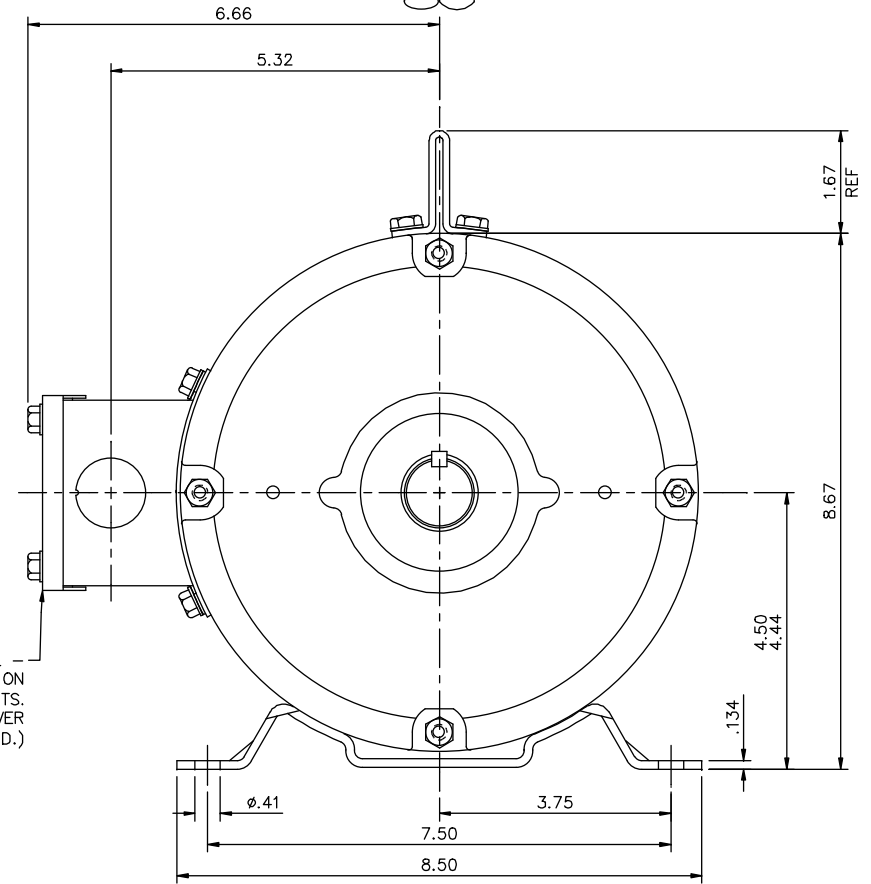
Nameplate Specifications


Output HP	2 Hp	Output KW	1.5 kW
Frequency	60 Hz	Voltage	575 V
Current	2.9 A	Speed	1170 rpm
Service Factor	1.15	Phase	3
Efficiency	88.5 %	Power Factor	59
Duty	Continuous	Insulation Class	F
Design Code	B	KVA Code	L
Frame	184T	Enclosure	Drip Proof
Thermal Protection	No Protection	Ambient Temperature	40 °C
Drive End Bearing Size	6206	Opp Drive End Bearing Size	6205
UL	Recognized	CSA	Y
CE	Y	IP Code	22
Number of Speeds	1		

Technical Specifications

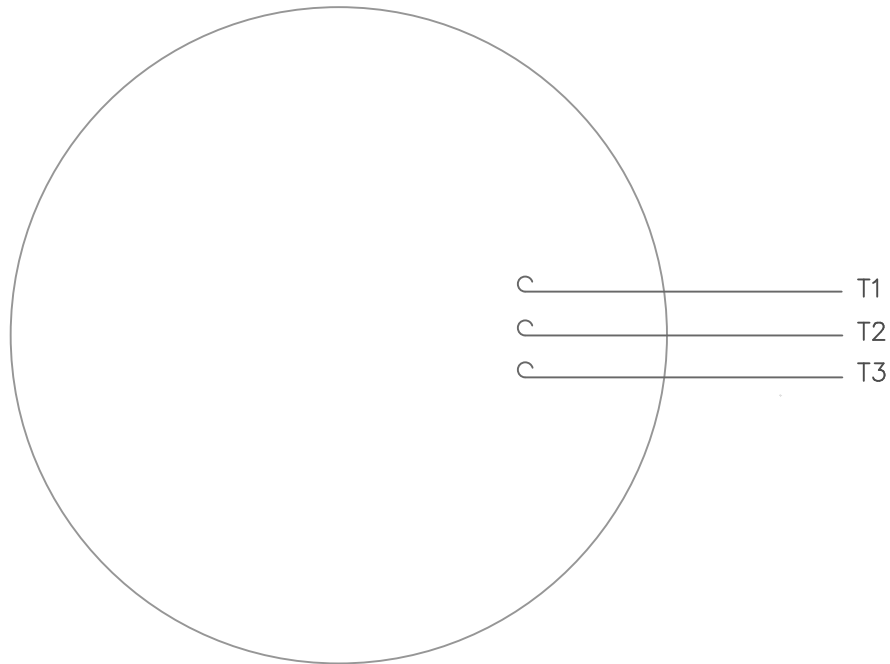
Electrical Type	Squirrel Cage Inverter Rated	Starting Method	Line Or Inverter
Poles	6	Rotation	Reversible
Resistance Main	3.9 Ohms	Mounting	Rigid Base
Motor Orientation	Horizontal	Drive End Bearing	Ball
Opp Drive End Bearing	Ball	Frame Material	Rolled Steel
Shaft Type	T	Overall Length	15.19 in
Frame Length	11.00 in	Shaft Diameter	1.125 in
Shaft Extension	2.81 in	Assembly/Box Mounting	F1 ONLY
Inverter Load	CONSTANT 10:1		
Connection Drawing	005102.01ME	Outline Drawing	035530-1100

Diagram illustrating the front view of the machine. A central rectangular label reads "WARNING FOR LIFTING". Below the label is a lifting mechanism with two vertical supports and a horizontal bar. The machine has a wide, flat base with rounded corners.

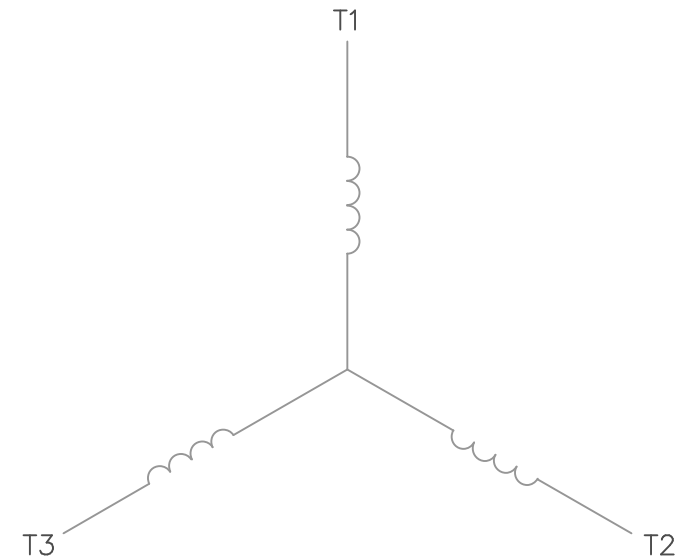


				TOLERANCES UNLESS SPECIFIED				DRAWN YS 06/21/07	
				DEC.	INCHES			CHK	
				.X	±.1			APPD	
03	REMOVED INV & XRI DECALS AS PER ISSAC 12-5294	GR 10/30/12	SR .XX	±.03	TITLE		OUTLINE – 180T FRAME		SCALE 1=2
02	ADDED STICKER LOCATIONS PER ECR 91487	JWM 12/04/07	.XXX	±.005			DRIP PROOF – RIGID		REF 035464
01	TITLE BLOCK WAS LEESON	YS 7/16/2007	.XXXX	±.0005	MAT'L				FMF
NO.	REVISION	BY & DATE	CHK	ANG ±1/2"	FINISH				PREV
THIS DRAWING IN DESIGN AND DETAIL IS OUR PROPERTY AND MUST NOT BE USED EXCEPT IN CONNECTION WITH OUR WORK. ALL RIGHTS OF DESIGN AND INVENTION ARE RESERVED.				RFP	CAD FILE	035530	SIZE B	DRAWING NO. 035530	REV. 03
THIS IS AN ELECTRONICALLY GENERATED DOCUMENT – DO NOT SCALE THIS PRINT				DIST NLV					


VIEW FROM OUTSIDE OF MOTOR AT SWITCH END.



LINE LEADS

CONNECT LEADS AS FOLLOWS
FOR FOUR CONDUCTOR CORD ()

CORD	L1 (RED)	L2 (WHITE)	L3 (BLACK)	(GREEN)
MOTOR	T1	T2	T3	GROUND

				TOLERANCES UNLESS SPECIFIED			DRAWN RDW 5/1/02		
				DEC.	INCHES		CHK		
				.X	±.1		APPD		
				.XX	±.01		SCALE 1=1		
				.XXX	±.005		REF		
				.XXXX	±.0005		FMF		
NO.	REVISION	BY & DATE	CHK	ANG	±1/2°	FINISH		PREV	
THIS DRAWING IN DESIGN AND DETAIL IS OUR PROPERTY AND MUST NOT BE USED EXCEPT IN CONNECTION WITH OUR WORK ALL RIGHTS OF DESIGN AND INVENTION ARE RESERVED THIS IS AN ELECTRONICALLY GENERATED DOCUMENT – DO NOT SCALE THIS PRINT			RFP	5/1/02	CAD FILE 00510201ME		SIZE	DRAWING NO.	REV.
			DIST				A	005102-01ME	

CERTIFICATION DATA SHEET

Model#: 184TTDW16076 AA
 CONN. DIAGRAM: 005102.01ME
 OUTLINE: 035530-1100

WINDING#: T8629 NONE 4
 ASSEMBLY: F1 ONLY

TYPICAL MOTOR PERFORMANCE DATA

HP	KW	SYNC. RPM	F.L. RPM	FRAME	ENCLOSURE	KVA CODE	DESIGN
2	1.49	1200	1170	184T	DP	L	B

PH	Hz	VOLTS	FL AMPS	START TYPE	DUTY	INSL	S.F	AMB°C	ELEVATION
3	60	575	2.9	LINE OR INVERTER	CONTINUOUS	F4	1.15	40	3300

FULL LOAD EFF: 88.5	3/4 LOAD EFF: 87.4	1/2 LOAD EFF: 84.6	GTD. EFF	ELEC. TYPE	NO LOAD AMPS
FULL LOAD PF: 59	3/4 LOAD PF: 50.7	1/2 LOAD PF: 38.8	0	SQ CAGE INV RATED	2

F.L. TORQUE	LOCKED ROTOR AMPS	L.R. TORQUE	B.D. TORQUE	F.L. RISE°C
8.87 LB-FT	19.6	19.5 LB-FT 220	36 LB-FT 406	30

SOUND PRESSURE @ 3 FT.	SOUND POWER	ROTOR WK^2	MAX. WK^2	SAFE STALL TIME	STARTS /HOUR	APPROX. MOTOR WGT
0 dBA	10 dBA	0.561 LB-FT^2	0 LB-FT^2	10 SEC.	0	0 LBS.

*** SUPPLEMENTAL INFORMATION ***

DE BRACKET TYPE	ODE BRACKET TYPE	MOUNT TYPE	ORIENTATION	SEVERE DUTY	HAZARDOUS LOCATION	DRIP COVER	SCREENS	PAINT
STANDARD	STANDARD	RIGID	HORIZONTAL	FALSE	NONE	FALSE	NONE	BLUE (ENAMEL)

BEARINGS		GREASE	SHAFT TYPE	SPECIAL DE	SPECIAL ODE	SHAFT MATERIAL	FRAME MATERIAL
DE	OPE						
BALL	BALL						
6206	6205	POLYREX EM	T	NONE	NONE	AISI 1045 (C-240)	ROLLED STEEL

THERMO-PROTECTORS				THERMISTORS	CONTROL	SPACE /n HEATERS
THERMOSTATS	PROTECTORS	WDG RTDs	BRG RTDs			
NONE	NOT	NONE	NONE	NONE	FALSE	NONE VOLTS

If Inverter equals NONE, contact factory for further information

INVERTER TORQUE: CONSTANT 10:1
 INV. HP SPEED RANGE: NONE

ENCODER: NONE
 NONE NONE
 NONE NONE PPR

BRAKE: NONE NONE
 NONE P/N NONE
 NONE NONE
 NONE FT-LB NONE V NONE Hz

*
N
O
T
E
S
*

DATE: 06/28/2017 06:42:00 AM
 FORM 3531 REV.3 02/07/99
 ** Subject to change without notice.

Data Sheet

Date: 6/19/2017

Customer: _____

Attention: _____

Submitted by: FAREEDA DUDEKULA



184TTDW16076

Submittal

Data @ 575 V

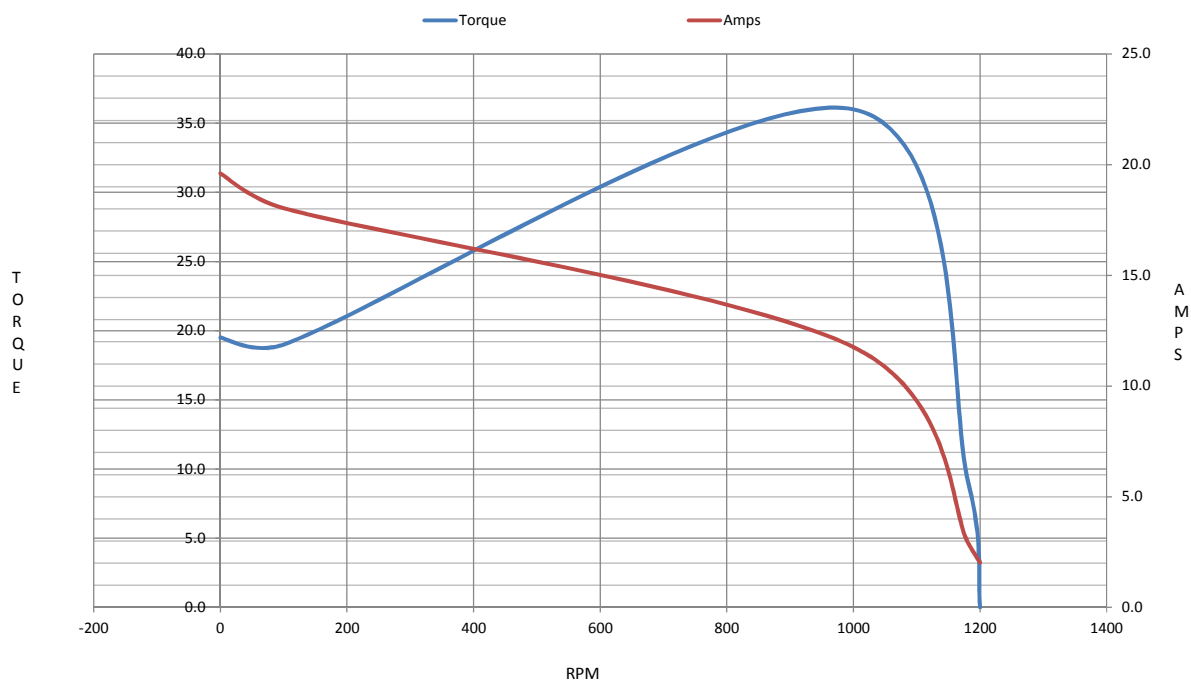
Motor Load Data

Load	0%	25%	50%	75%	100%	115%	125%	LR	
Current (Amps)	2.02	2.11	2.29	2.54	2.86	3.1	3.3	19.6	
Torque (ft-lb)	0.00	2.21	4.4	6.7	8.9	10.1	11.2	19.5	
RPM	1200	1196	1192	1186	1182	1,180	1176	0	
Efficiency (%)		75.4	84.6	87.5	88.5	88.5	88.3		
P.F. (%)	7.4	23.7	38.8	50.6	59.0	63.0	65.2	0.0	

Motor Speed Data

	LR	Pull-Up	BD	Rated	Idle																																					
Speed (RPM)	0	100	1000	1182	1200	Information Block																																				
Current (Amps)	19.6	18.0	11.8	2.86	2.02	HP	2.0																																			
Torque (ft-lb)	19.5	19.0	36.0	8.9	0.00	Sync. RPM	1200																																			
<div><div>Efficiency (%)</div><div>P.F. (%)</div><div>Current (Amps)</div></div> <table><thead><tr><th>LOAD</th><th>Efficiency (%)</th><th>P.F. (%)</th><th>Current (Amps)</th></tr></thead><tbody><tr><td>0%</td><td></td><td>7.4</td><td>2.0</td></tr><tr><td>20%</td><td></td><td>10.0</td><td>2.1</td></tr><tr><td>40%</td><td>75.0</td><td>15.0</td><td>2.2</td></tr><tr><td>60%</td><td>85.0</td><td>25.0</td><td>2.4</td></tr><tr><td>80%</td><td>87.0</td><td>35.0</td><td>2.7</td></tr><tr><td>100%</td><td>88.0</td><td>50.0</td><td>3.0</td></tr><tr><td>120%</td><td>88.0</td><td>60.0</td><td>3.3</td></tr></tbody></table>						LOAD	Efficiency (%)	P.F. (%)	Current (Amps)	0%		7.4	2.0	20%		10.0	2.1	40%	75.0	15.0	2.2	60%	85.0	25.0	2.4	80%	87.0	35.0	2.7	100%	88.0	50.0	3.0	120%	88.0	60.0	3.3	Frame	180			
						LOAD	Efficiency (%)	P.F. (%)	Current (Amps)																																	
						0%		7.4	2.0																																	
						20%		10.0	2.1																																	
						40%	75.0	15.0	2.2																																	
						60%	85.0	25.0	2.4																																	
						80%	87.0	35.0	2.7																																	
						100%	88.0	50.0	3.0																																	
						120%	88.0	60.0	3.3																																	
						Enclosure	DP																																			
						Construction	TDW																																			
						Voltage	575	V																																		
						Frequency	60	Hz																																		
						Design	B																																			
						LR Code letter	L																																			
						Service Factor	1.15																																			
						Temp Rise @ FL	30	° C																																		
Duty	CONT																																									
Ambient	40	° C																																								
Elevation	1,000	feet																																								
Rotor/Shaft wk²	0.56	Lb-Ft²																																								
Ref Wdg	T8629	NONE																																								
Sound Pressure @ 1M	0	dBA																																								
VFD Rating	CONSTANT 10:1																																									
Outline Dwg	035530-1100																																									
Conn. Diag	005102.01ME																																									
Additional Specifications:																																										
0																																										
0																																										
EQUIV CKT (OHMS / PHASE)																																										
R1	R2	X1	X2	Xm																																						
0.0000	0.0000	0.0000	0.0000	0.0000	0.0000																																					

Speed -Torque Curve



EC Declaration of Conformity

The undersigned representing
the manufacturer:

Regal Beloit America
100 East Randolph St.
Wausau, WI 54401

and the authorized representative
established within the Community:

Marathon Electric UK
6F Thistleton Road Ind. Estate
Market Overton
Oakham, Rutland LE15 7PP UK

are committed to providing customers with products that comply with applicable regulations and international protocols to which they are subject, including the requirements of the European Parliament Directive on the Harmonization of the laws relating to electrical equipment designed for use within certain voltage limits (2014/35/EU).

Regal Beloit America declares that the following product(s), to which this declaration relates, are in conformity with the relevant sections of the EC standards listed below.

This statement supersedes any statements previously issued pertaining to the product(s) listed below and is subject to change without notice.

Model No : 184TTDW16076

(Model No. may contain prefix and/or suffix characters)

Catalog No : U915

Rework No : N/A

Directives :

Low Voltage Directive 2014/35/EU

Harmonized Standards Used :

EN 60034-1: 2010 (IEC 60034-1: 2010)

EN 60034-5: 2001/A1:2007 (IEC 60034-5: 2000/A1:2006)

Authorized Representative:



Michael A. Logsdon
Vice President, Technology

Authorized Representative in the Community:



Julian Clark
Marketing Engineer

Created on 09/01/2022

CE 22