

PRODUCT INFORMATION PACKET



Model No: 184TTDW16036
Catalog No: 184TTDW16036
5,1800,DP,184JM,3/60/208-230/460

Regal and Marathon are trademarks of Regal Rexnord Corporation or one of its affiliated companies.
©2024 Regal Rexnord Corporation, All Rights Reserved. MC017097E



Nameplate Specifications

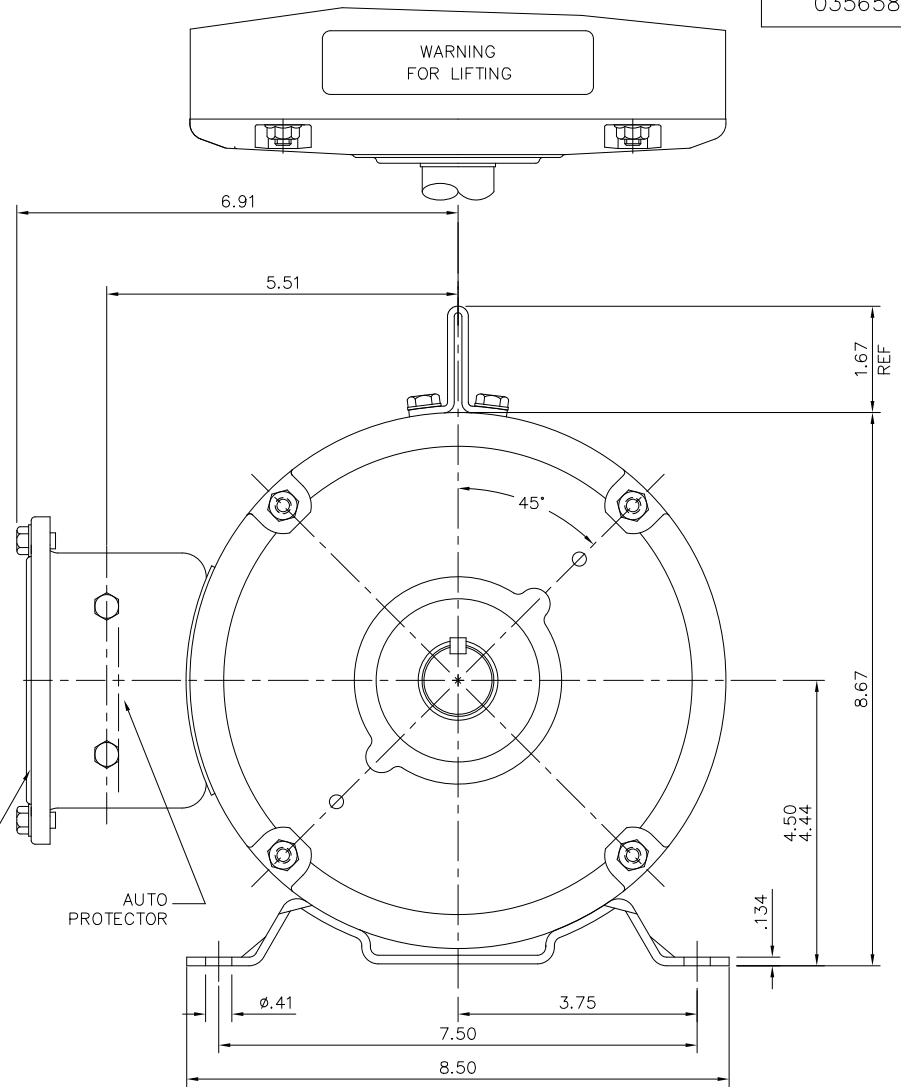
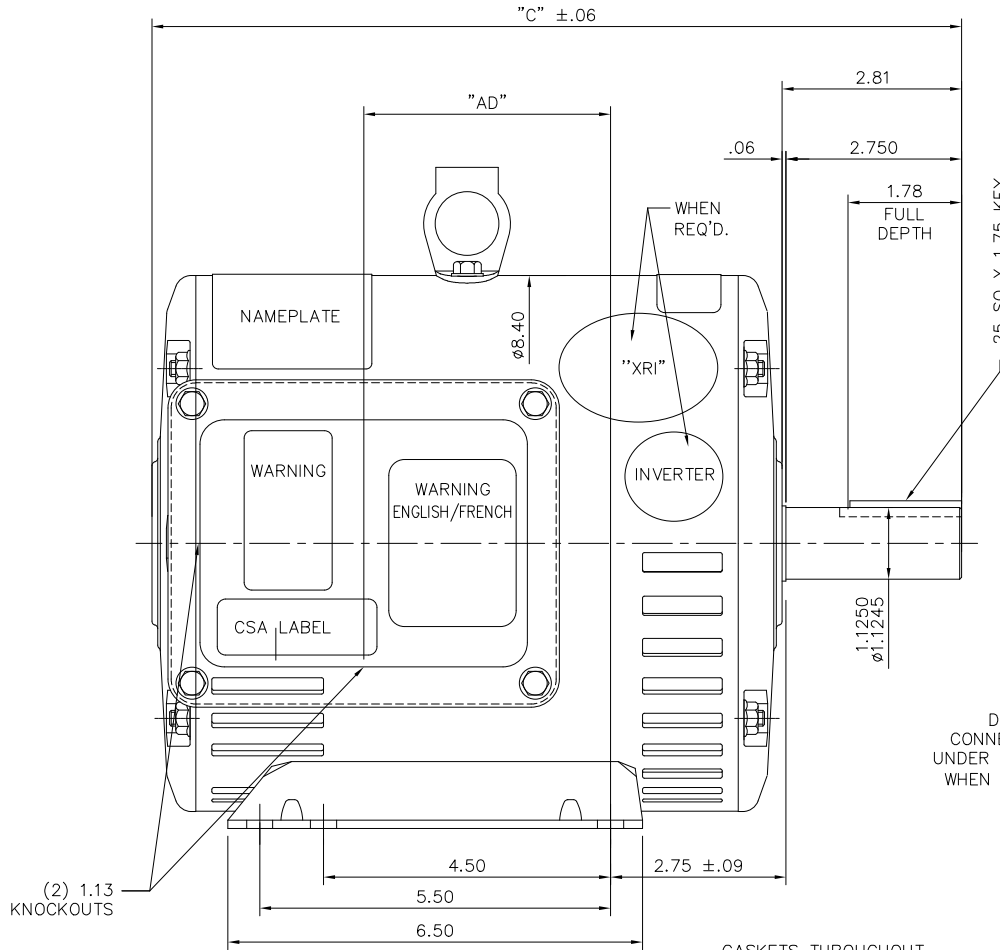
Phase	3	Output HP	5 Hp
Output KW	3.7 kW	Voltage	230/460 V
Speed	1755 rpm	Service Factor	1.15
Frame	184JM	Enclosure	Drip Proof
Thermal Protection	Automatic	Efficiency	89.5 %
Ambient Temperature	40 °C	Frequency	60 Hz
Current	12.6/6.3 A	Power Factor	83
Duty	Continuous	Insulation Class	F
Design Code	B	KVA Code	J
Drive End Bearing Size	6206	Opp Drive End Bearing Size	6205
UL	Recognized	CSA	Y
CE	Y	IP Code	22
Number of Speeds	1		

Technical Specifications

Electrical Type	Squirrel Cage Induction Run	Starting Method	Across The Line
Poles	4	Rotation	Reversible
Resistance Main	2.72 Ohms	Mounting	Rigid Base
Motor Orientation	Horizontal	Drive End Bearing	Ball
Opp Drive End Bearing	Ball	Frame Material	Rolled Steel
Shaft Type	T	Assembly/Box Mounting	F1 ONLY
Outline Drawing	035658-1000	Connection Drawing	005010.01ME

This is an uncontrolled document once printed or downloaded and is subject to change without notice. Date Created:01/29/2024

035658



DASH NO.	"C"	"AD"
850	12.69	3.87
900	13.19	4.37
950	13.69	4.87
1000	14.19	5.37
1050	14.69	5.87
1100	15.19	6.37
1150	15.69	6.87
1200	16.19	7.37

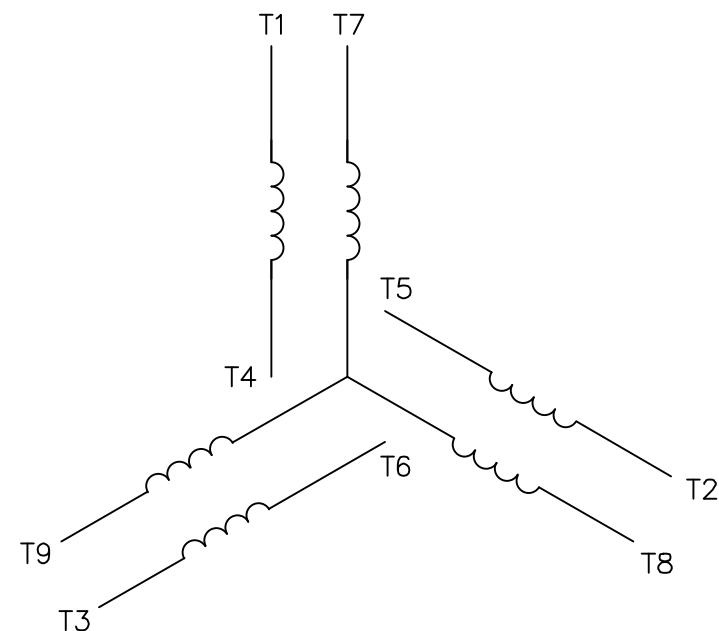
GASKETS THROUGHOUT

		TOLERANCES UNLESS SPECIFIED		MARATHON ELECTRIC		DRAWN YS 03/20/08	
		DEC.	INCHES			CHK	
		.X	±.1			APPD	
		.XX	±.03	TITLE		SCALE	1=2
H DE & NDE BKT ROTATED TO 45°. AS PER CR-0017346		BBR 1/23/2024	.XXX ±.005	OUTLINE - 180T FRAME		REF	035621
01 AD DIM UPDATED		AK 03/07/2011	.XXXX ±.0005	MAT'L		FMF	182TDDW4074
NO.	REVISION	BY & DATE	CHK	ANG	FINISH	PREV	
THIS DRAWING IN DESIGN AND DETAIL IS OUR PROPERTY AND MUST NOT BE USED EXCEPT IN CONNECTION WITH OUR WORK ALL RIGHTS OF DESIGN AND INVENTION ARE RESERVED THIS IS AN ELECTRONICALLY GENERATED DOCUMENT - DO NOT SCALE THIS PRINT			RFP		CAD FILE	035658	SIZE DRAWING NO.
			DIST	NLV			B 035658
							H


VIEW FROM OUTSIDE OF MOTOR AT SWITCH END.



LINE LEADS



VOLTAGE	L1	L2	L3	JOIN & INSULATE
HIGH	T1	T2	T3	(T4,T7) (T5,T8) (T6,T9)
LOW	T1,T7	T2,T8	T3,T9	T4,T5,T6

				TOLERANCES UNLESS SPECIFIED			DRAWN RDW 04/12/02		
				DEC.	INCHES		CHK		
				.X	±.1		APPD		
				.XX	±.01		SCALE 1=1		
				.XXX	±.005		REF FIG.2-51		
				.XXXX	±.0005	MAT'L. DECAL - 004014		FMF	
NO.	REVISION	BY & DATE	CHK	ANG	±1/2"	FINISH		PREV	
THIS DRAWING IN DESIGN AND DETAIL IS OUR PROPERTY AND MUST NOT BE USED EXCEPT IN CONNECTION WITH OUR WORK ALL RIGHTS OF DESIGN AND INVENTION ARE RESERVED THIS IS AN ELECTRONICALLY GENERATED DOCUMENT - DO NOT SCALE THIS PRINT			RFP 04/12/02		CAD FILE 00501001ME		SIZE	DRAWING NO.	REV.
			DIST				A	005010-01ME	