

PRODUCT INFORMATION PACKET

Model No: 184TTDW16033
Catalog No: 184TTDW16033
5,1765,DP,184T,3/60/230/460

Regal and are trademarks of Regal Rexnord Corporation or one of its affiliated companies.
©2022 Regal Rexnord Corporation, All Rights Reserved. MC017097E



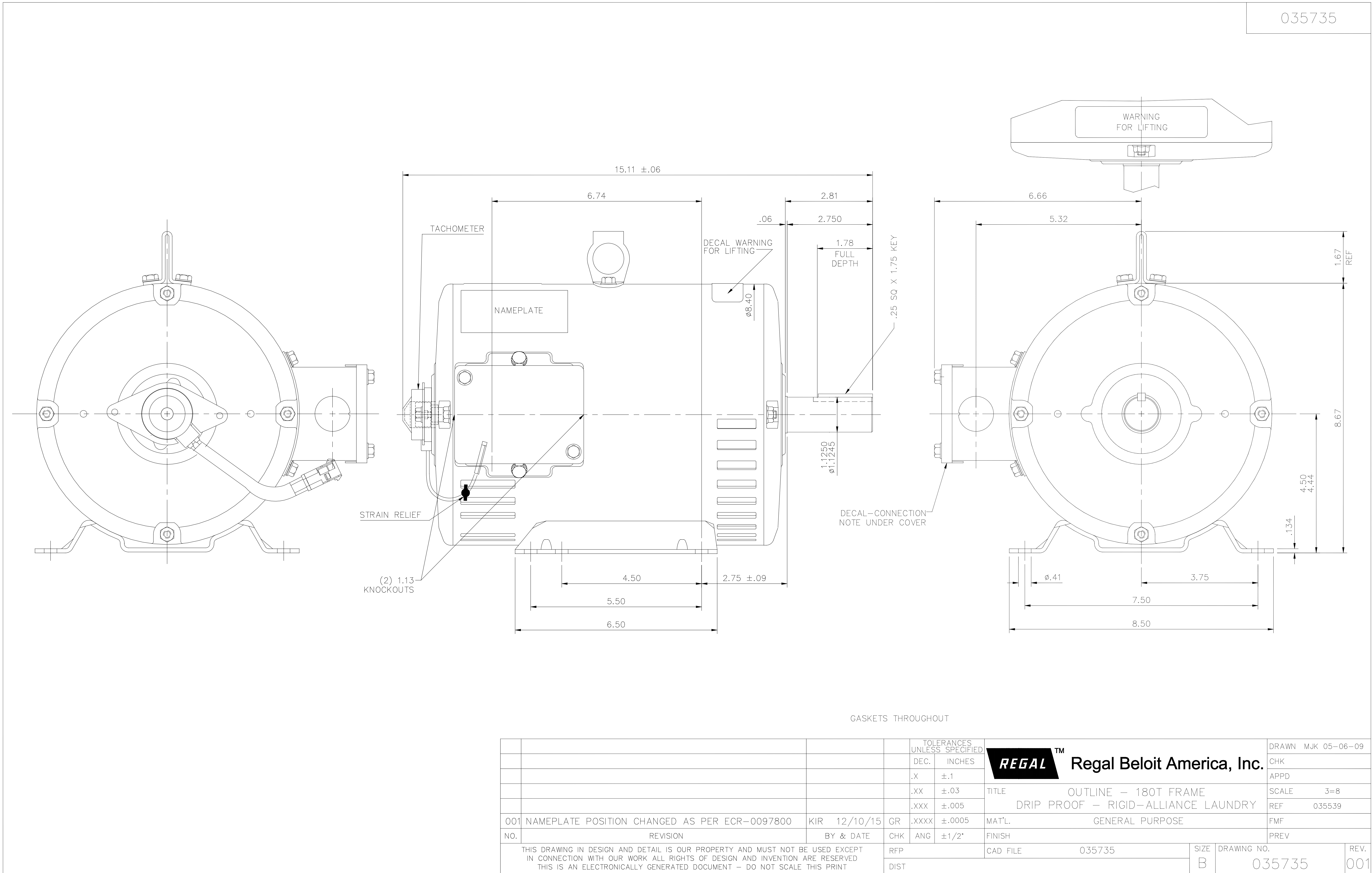
Nameplate Specifications

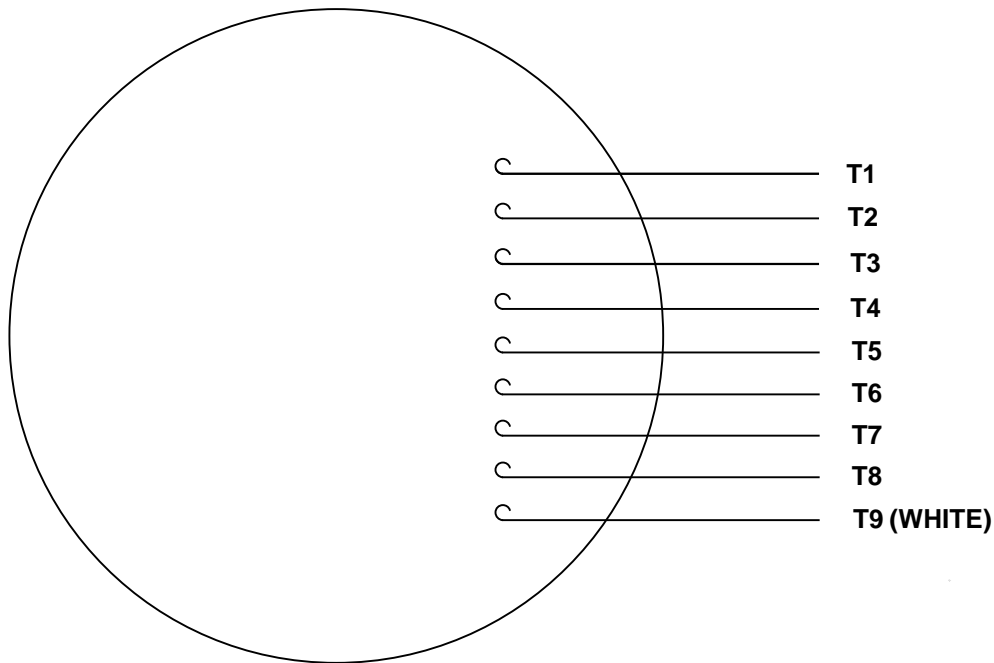
Output HP	5 Hp	Output KW	3.7 kW
Frequency	60 Hz	Voltage	230/460 V
Current	13.0/6.5 A	Speed	1765 rpm
Service Factor	1.15	Phase	3
Efficiency	89.5 %	Power Factor	80
Duty	Continuous	Insulation Class	F
Design Code	A	KVA Code	K
Frame	184T	Enclosure	Drip Proof
Thermal Protection	No Protection	Ambient Temperature	50 °C
Drive End Bearing Size	6206	Opp Drive End Bearing Size	6205
UL	Recognized	CSA	Y
CE	Y	IP Code	22
Number of Speeds	1		

Technical Specifications

Electrical Type	Squirrel Cage Induction Run	Starting Method	Across The Line
Poles	4	Rotation	Reversible
Resistance Main	2.56 Ohms	Mounting	Rigid Base
Motor Orientation	Horizontal	Drive End Bearing	Ball
Opp Drive End Bearing	Ball	Frame Material	Rolled Steel
Shaft Type	T	Assembly/Box Mounting	F1 ONLY
Connection Drawing	005010.43ME	Outline Drawing	035735-1000

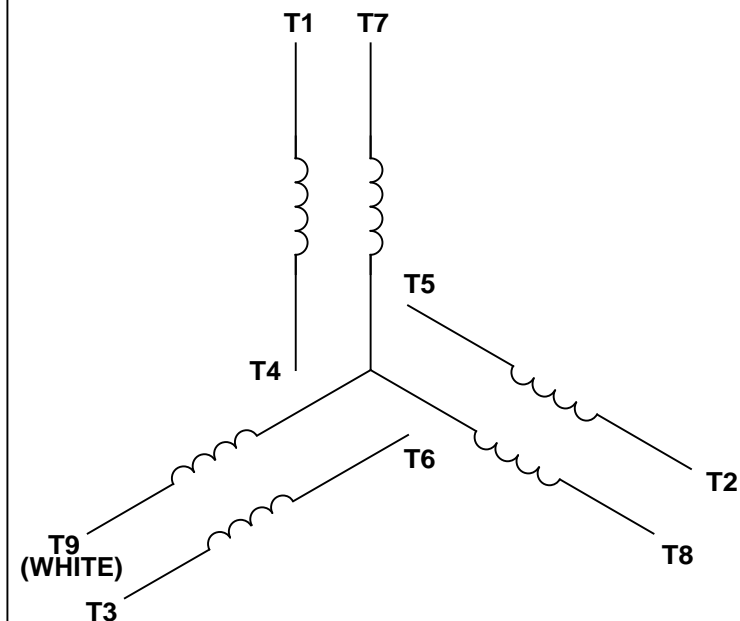
This is an uncontrolled document once printed or downloaded and is subject to change without notice. Date Created:10/07/2022





RBC PROPRIETARY AND CONFIDENTIAL INFORMATION
 This document is the property of REGAL BELOIT CORPORATION ("RBC") including its subsidiaries and divisions and contains proprietary information of RBC. This document is loaned on the express condition that neither it nor the information contained therein shall be disclosed to others without the express written consent of RBC, and that the information shall be used by the recipient only as approved expressly by RBC. This document shall be returned to RBC upon its request. This document may be subject to certain restrictions under U.S. export control laws and regulations.

LINE LEADS



VOLTAGE	L1	L2	L3	JOIN & INSULATE
HIGH	T1	T2	T3	(T4,T7) (T5,T8) (T6,T9)
LOW	T1,T7	T2,T8	T3,T9	T4,T5,T6

				TOLERANCES UNLESS SPECIFIED				DRAWN AK 05/07/10	
				DEC	INCHES			CHK KA 05/07/10	
				.X	±.1			APPR	
				.XX	±.01			SCALE 1:1	
						TITLE EXTERNAL WIRING DIAGRAM 3 PHASE W/O PROTECTOR		REF 005010.01ME	
								FMF	
--	REDRAWN IN SOLIDWORKS	VJB 2/17/11		.XXX	±.005	MAT'L DECAL - 004014		PAGE OF	
NO	REVISION	BY & DATE	CHK	ANG	±1/2°	FINISH		REV	
THIRD ANGLE PROJECTION			RFP		PREV		SIZE	DRAWING NO	
			NETWORK FILE NAME		00501043ME		A	005010-43ME	



P.O. BOX 8003
WAUSAU, WI 54401-8003
PH. 715-675-3311

DATA VOLTS: 460

CERTIFICATION DATA SHEET

CUSTOMER:
ORDER #:
CONN. DIAGRAM: 005010.43ME
OUTLINE: 035735-1000
WINDING: T84221 DR 3
SPEED:

CUSTOMER P.O. #:
REFERENCE MODEL #: 184TTDW16033
CAT #: N/A
CUSTOMER PART #:
MOUNTING: F1 ONLY

TYPICAL MOTOR PERFORMANCE DATA

HP	KW	SYNC RPM	FL RPM	FRAME	ENCLOSURE	TYPE	KVA CODE	DESIGN
5	3.7	1800	1765	184T	DP	TDW	K	A

PH	HZ	VOLTS	AMPS	START TYPE	DUTY	INSL	S.F.	AMB	ELEV.
3	60	230/460	13/6.5	ACROSS THE LINE	CONT	F	1.15	50	3300

F.L. EFF	89.5	3/4 LD EFF	89.5	1/2 LD EFF	88.5	GTD EFF	ELECT. TYPE
F.L. PF	80.0	3/4 LD PF	75.5	1/2 LD PF	64.5	87.5	SQ CAGE IND RUN

F.L. TORQUE	LR AMPS @ 460 V	L.R. TORQUE	B.D. TORQUE	F.L. RISE (° C)
14.9 LB-FT	54.0	33.5 LB-FT 225%	53.5 LB-FT 359%	50

SOUND PRESSURE @ 3 FT.	SOUND	POWER	ROTOR WK ²	MAX. LOAD WK ²	SAFE STALL TIME	STARTS/HOUR	APROX.	MOTOR WGT
75 dBA	84 dBA		0.45 LB-FT ²	- LB-FT ²	12 SEC.	2	78	LB.

*** SUPPLEMENTAL INFORMATION ***

DE BRACKET TYPE	ODE BRACKET TYPE	MOUNT TYPE	MOTOR ORIENTATION	SEVERE DUTY	HAZARDOUS LOCATION	DRIP COVER	SCREENS	PAINT
STANDARD	ENCODER	RIGID	HORIZONTAL	NO	NONE	NO	NONE	BLUE - MARATHON

BEARINGS	GREASE	SHAFT TYPE	SPECIAL DE	SPECIAL ODE	SHAFT	MATERIAL	FRAME MATERIAL
DE BALL	ODE BALL						
6206	6205	POLYREX EM	T	NONE	NONE	AISI 1045 (C-240)	ROLLED STEEL

THERMOSTATS	PROTECTORS	WDG RTD's	BRG RTD's	THERMISTORS	CONTROL	SPACE	HEATERS
NONE	NOT	NONE	NONE	NONE	FALSE		NA

R1 (ohms/ph)	R2 (ohms/ph)	X1 (ohms/ph)	X2 (ohms/ph)	Xm (ohms/ph)	VIBRATION (in/sec)	FLOAT
-	-	-	-	-	0.080	ODE

* N O T E *					INVERTER TORQUE: NONE
					INV. HP SPEED RANGE: NONE
					ENCODER: ZHENJIANG SURUN
					HCC-8A-20
					CORD NONE PPR

PREPARED BY:	DATE: 9/30/2022	BRAKE: NONE
		NONE
		FT-LB: NA
		VOLTAGE: NONE
FORM: 3531 REV. 4	2/27/06	UL: V-INS, CONST UL REC

