

# PRODUCT INFORMATION PACKET

**marathon®**  
Motors

Model No: 184TTDW16027

Catalog No: E938A

7.50 HP General Purpose Motor, 3 phase, 3600 RPM, 575 V, 184T Frame, ODP  
General Purpose Motors



Regal and Marathon are trademarks of Regal Rexnord Corporation or one of its affiliated companies.  
©2021 Regal Rexnord Corporation, All Rights Reserved. MC017097E

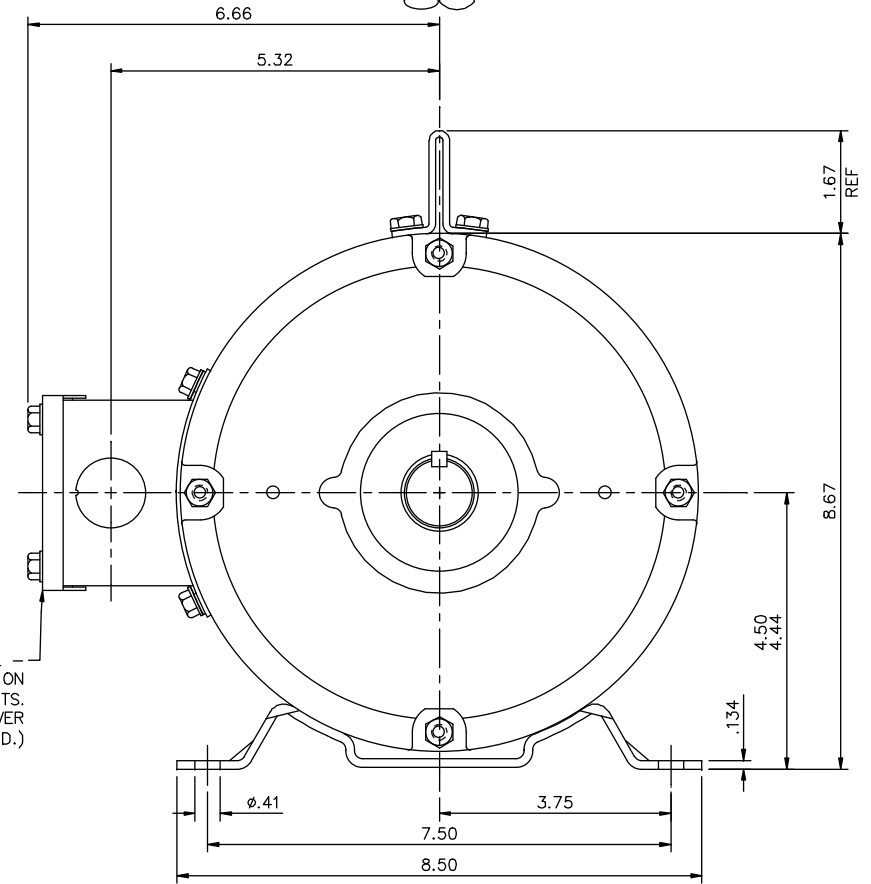
**RegalRexnord**


### Nameplate Specifications

Output HP	7.50 Hp	Output KW	5.6 kW
Frequency	60 Hz	Voltage	575 V
Current	7.1 A	Speed	3450 rpm
Service Factor	1.15	Phase	3
Efficiency	88.5 %	Power Factor	89
Duty	Continuous	Insulation Class	F
Design Code	A	KVA Code	J
Frame	184T	Enclosure	Drip Proof
Thermal Protection	No	Ambient Temperature	40 °C
Drive End Bearing Size	6206	Opp Drive End Bearing Size	6205
UL	Recognized	CSA	Y
CE	Y	IP Code	22
Number of Speeds	1		

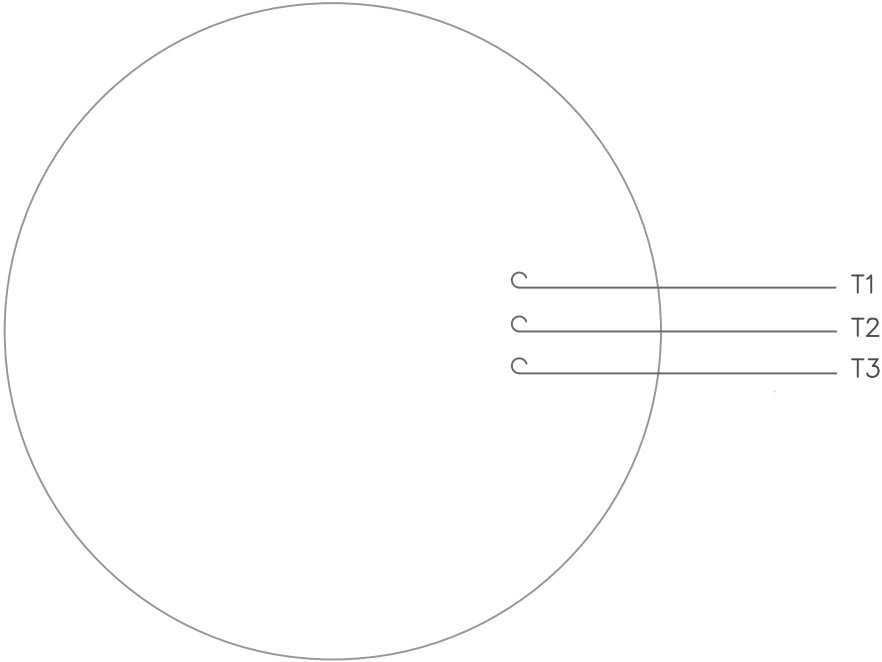
### Technical Specifications

Electrical Type	Squirrel Cage Inverter Rated	Starting Method	Line Or Inverter
Poles	2	Rotation	Reversible
Resistance Main	0 Ohms	Mounting	Rigid Base
Motor Orientation	Horizontal	Drive End Bearing	Ball
Opp Drive End Bearing	Ball	Frame Material	Rolled Steel
Shaft Type	T	Overall Length	14.69 in
Frame Length	10.50 in	Shaft Diameter	1.125 in
Shaft Extension	2.81 in	Assembly/Box Mounting	F1/F2 Capable
Connection Drawing	00510201ME	Outline Drawing	035530-1050

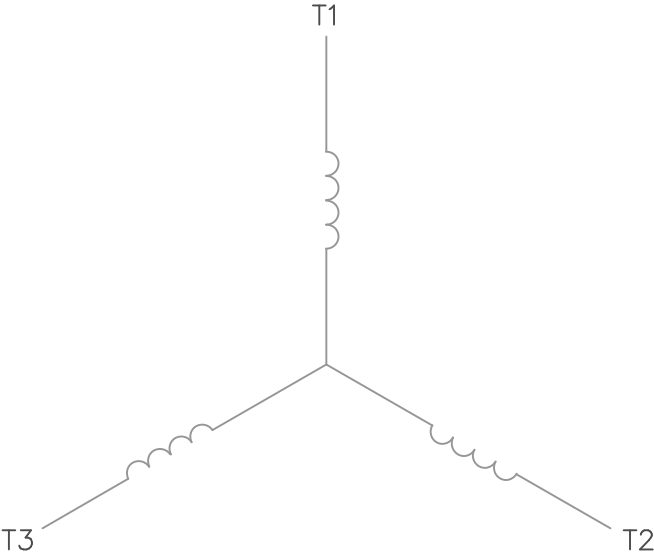


				TOLERANCES UNLESS SPECIFIED				DRAWN    YS 06/21/07		
				DEC.    INCHES				CHK		
				.X    ±.1				APPD		
03	REMOVED INV & XRI DECALS AS PER ISSAC 12-5294	GR    10/30/12	SR	.XX	±.03	TITLE                    OUTLINE – 180T FRAME		SCALE            1=2		
02	ADDED STICKER LOCATIONS PER ECR 91487	JWM    12/04/07		.XXX	±.005	DRIP PROOF – RIGID		REF            035464		
01	TITLE BLOCK WAS LEESON	YS    7/16/2007		.XXXX	±.0005	MAT'L		FMF		
NO.	REVISION	BY & DATE	CHK	ANG	±1/2"	FINISH		PREV		
THIS DRAWING IN DESIGN AND DETAIL IS OUR PROPERTY AND MUST NOT BE USED EXCEPT IN CONNECTION WITH OUR WORK. ALL RIGHTS OF DESIGN AND INVENTION ARE RESERVED. THIS IS AN ELECTRONICALLY GENERATED DOCUMENT – DO NOT SCALE THIS PRINT.				RFP		CAD FILE	035530	SIZE    B	DRAWING NO.    035530	REV.    03

VIEW FROM OUTSIDE OF MOTOR AT SWITCH END.




LINE LEADS



CONNECT LEADS AS FOLLOWS  
FOR FOUR CONDUCTOR CORD ( )

CORD	L1 (RED)	L2 (WHITE)	L3 (BLACK)	(GREEN)
MOTOR	T1	T2	T3	GROUND

				TOLERANCES UNLESS SPECIFIED			DRAWN RDW 5/1/02	
				DEC.	INCHES		CHK	
				.X	±.1		APPD	
				.XX	±.01		TITLE EXTERNAL WIRING DIAGRAM TYPE "T" W/O PROTECTOR	SCALE 1=1
				.XXX	±.005			REF
				.XXXX	±.0005	MAT'L. DECAL - 004169	FMF	
NO.	REVISION	BY & DATE	CHK	ANG	±1/2°	FINISH	PREV	
THIS DRAWING IN DESIGN AND DETAIL IS OUR PROPERTY AND MUST NOT BE USED EXCEPT IN CONNECTION WITH OUR WORK ALL RIGHTS OF DESIGN AND INVENTION ARE RESERVED THIS IS AN ELECTRONICALLY GENERATED DOCUMENT - DO NOT SCALE THIS PRINT			RFP	5/1/02	CAD FILE 00510201ME	SIZE A	DRAWING NO. 005102-01ME	REV.
			DIST					

## CERTIFICATION DATA SHEET

Model#: 184TTDW16027 AA

WINDING#: T82109 R1 7

CONN. DIAGRAM: 00510201ME

ASSEMBLY: F1/F2 CAPABLE

OUTLINE: 035530-1050

## TYPICAL MOTOR PERFORMANCE DATA

HP	KW	SYNC. RPM	F.L. RPM	FRAME	ENCLOSURE	KVA CODE	DESIGN
7 1/2	5.6	3600	3450	184T	DP	J	A

PH	Hz	VOLTS	FL AMPS	START TYPE	DUTY	INSL	S.F	AMB°C	ELEVATION
3	60	575	7.1	LINE OR INVERTER	CONTINUOUS	F4	1.15	40	3300

FULL LOAD EFF: 88.5	3/4 LOAD EFF: 89.4	1/2 LOAD EFF: 87.4	GTD. EFF	ELEC. TYPE	NO LOAD AMPS
FULL LOAD PF: 89	3/4 LOAD PF: 86.8	1/2 LOAD PF: 80.3	0	SQ CAGE INV RATED	2.2

F.L. TORQUE	LOCKED ROTOR AMPS	L.R. TORQUE	B.D. TORQUE	F.L. RISE°C
11.3 LB-FT	60	27.9 LB-FT 247	41.6 LB-FT 368	45

SOUND PRESSURE @ 3 FT.	SOUND POWER	ROTOR WK^2	MAX. WK^2	SAFE STALL TIME	STARTS /HOUR	APPROX. MOTOR WGT
- dBA	- dBA	0.3 LB-FT^2	- LB-FT^2	10 SEC.	-	100 LBS.

## \*\*\* SUPPLEMENTAL INFORMATION \*\*\*

DE BRACKET TYPE	ODE BRACKET TYPE	MOUNT TYPE	ORIENTATION	SEVERE DUTY	HAZARDOUS LOCATION	DRIP COVER	SCREENS	PAINT
STANDARD	STANDARD	RIGID	HORIZONTAL	FALSE	NONE	FALSE	NONE	BLUE (ENAMEL)

BEARINGS		GREASE	SHAFT TYPE	SPECIAL DE	SPECIAL ODE	SHAFT MATERIAL	FRAME MATERIAL
DE	OPE						
BALL	BALL						
6206	6205	POLYREX EM	T	NONE	NONE	AISI 1045 (C-240)	ROLLED STEEL

THERMO-PROTECTORS				THERMISTORS	CONTROL	SPACE /n HEATERS
THERMOSTATS	PROTECTORS	WDG RTDs	BRG RTDs			
NONE	NOT	NONE	NONE	NONE	FALSE	NONE VOLTS

If Inverter equals NONE, contact factory for further information

INVERTER TORQUE: CONSTANT 10:1
INV. HP SPEED RANGE: NONE
ENCODER: NONE
NONE NONE
NONE NONE PPR
BRAKE: NONE NONE
NONE P/N NONE
NONE NONE
NONE FT-LB NONE V NONE Hz

\*  
N  
O  
T  
E  
S  
\*

DATE: 06/28/2017 06:35:43 AM

FORM 3531 REV.3 02/07/99

\*\* Subject to change without notice.

## Data Sheet

Date: 19-06-2017

Customer:

Attention:

Submitted by: FAREEDA DUDEKULA



184TTDW16027

Submittal

Data @ 575 V

## Motor Load Data

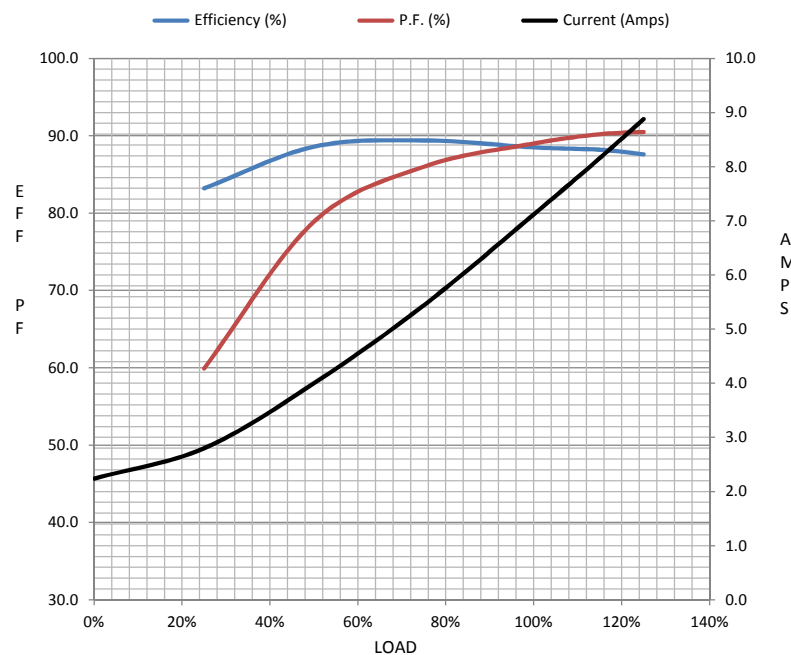
Load	0%	25%	50%	75%	100%	115%	125%	LR	
Current (Amps)	2.24	2.80	4.0	5.4	7.1	8.2	8.9	60.0	
Torque (ft-lb)	0.00	2.80	5.6	8.4	11.3	13.1	14.3	28.5	
RPM	3600	3573	3548	3520	3490	3,470	3456	0	
Efficiency (%)		83.2	88.6	89.4	88.5	88.2	87.6		
P.F. (%)	11.0	59.9	78.9	86.0	89.0	90.2	90.5	47.5	

## Motor Speed Data

	LR	Pull-Up	BD	Rated	Idle
Speed (RPM)	0	700	2630	3490	3600
Current (Amps)	60.0	54.0	40.0	7.1	2.24
Torque (ft-lb)	28.5	27.0	39.0	11.3	0.00

## Information Block

HP	7.5			
Sync. RPM	3600			
Frame	180			
Enclosure	DP			
Construction	TDW			
Voltage	575 V			
Frequency	60 Hz			
Design	A			
LR Code letter	J			
Service Factor	1.15			
Temp Rise @ FL	45 ° C			
Duty	CONT			
Ambient	40 ° C			
Elevation	1,000 feet			
Rotor/Shaft wk²	0.30 Lb-Ft²			
Ref Wdg	T82109 R1			
Sound Pressure @ 1M	71 dBA			
VFD Rating	CONSTANT 10:1			
Outline Dwg	035530-1050			
Conn. Diag	00510201ME			
Additional Specifications:				
0				
365THFS8036				
EQUIV CKT (OHMS / PHASE)				
R1	R2	X1	X2	Xm
1.7660	1.4410	3.1780	2.0020	123.6770



## Speed -Torque Curve

