

PRODUCT INFORMATION PACKET



Model No: 184TTDW14078

Catalog No: C152A

General Purpose Motor, 2 & 1.50 HP, 3 Ph, 60 & 50 Hz, 230/460 & 190/380 V, 1200 & 1000 RPM,
184TC Frame, DP

Regal and Marathon are trademarks of Regal Rexnord Corporation or one of its affiliated companies.

©2023 Regal Rexnord Corporation, All Rights Reserved. MC017097E



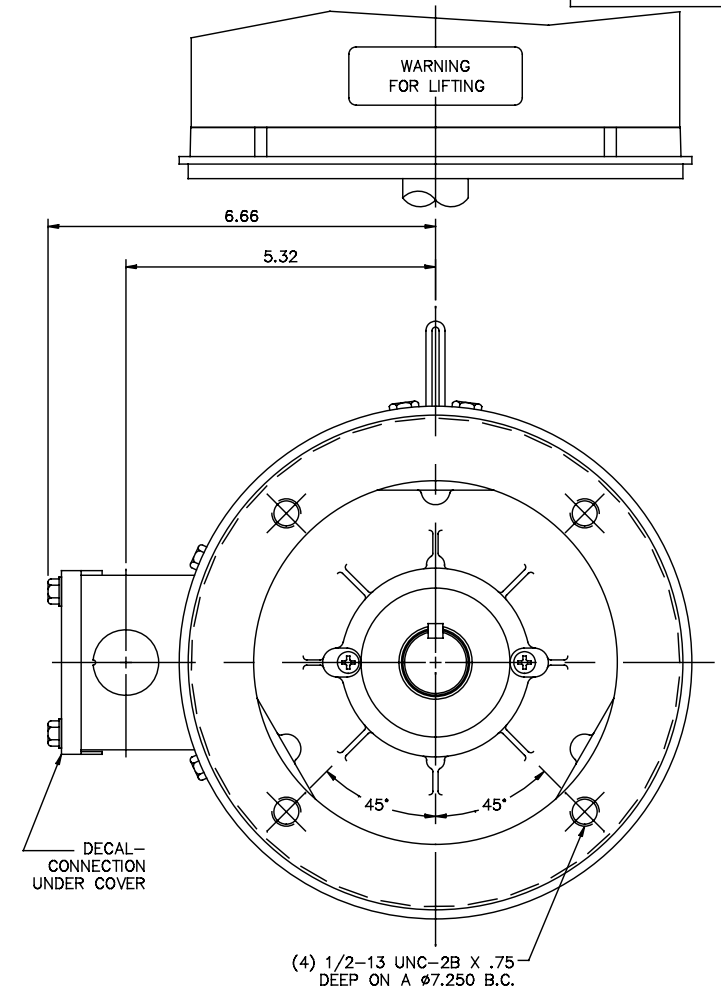
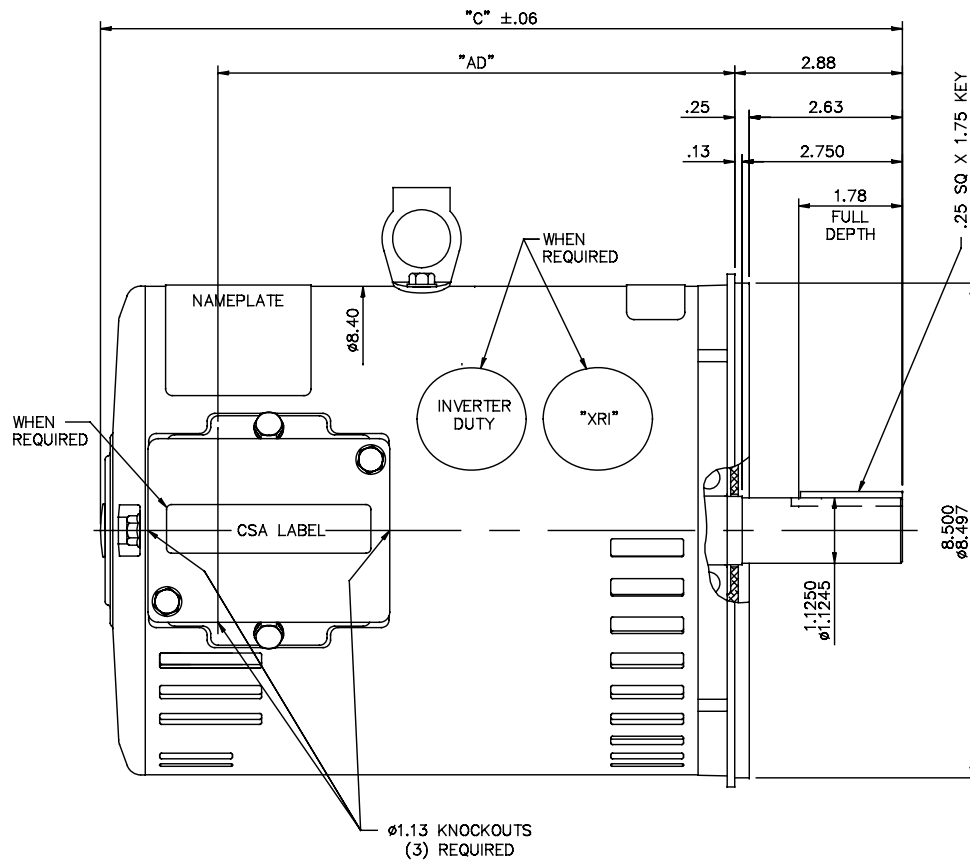
Nameplate Specifications

Phase	3	Output HP	2 & 1.50 Hp
Output KW	1.5 & 1.1 kW	Voltage	230/460 & 190/380 V
Speed	1170 & 975 rpm	Service Factor	1.15 & 1.15
Frame	184TC	Enclosure	Drip Proof
Thermal Protection	No Protection	Efficiency	85.5 & 81.9 %
Ambient Temperature	40 °C	Frequency	60 & 50 Hz
Current	6.8/3.4 & 7.6/3.8 A	Power Factor	64.4
Duty	Continuous	Insulation Class	B
Design Code	B	KVA Code	J
Drive End Bearing Size	6206	Opp Drive End Bearing Size	6205
UL	Recognized	CSA	Y
CE	Y	IP Code	22
Number of Speeds	1		

Technical Specifications

Electrical Type	Squirrel Cage Induction Run	Starting Method	Across The Line
Poles	6	Rotation	Reversible
Resistance Main	6.6 Ohms	Mounting	Round
Motor Orientation	Horizontal	Drive End Bearing	Ball
Opp Drive End Bearing	Ball	Frame Material	Rolled Steel
Shaft Type	T	Overall Length	13.25 in
Frame Length	9.00 in	Shaft Diameter	1.125 in
Shaft Extension	2.75 in	Assembly/Box Mounting	F1/F2 Capable
Connection Drawing	005010.01ME	Outline Drawing	035593-900

035593



GASKETS THROUGHOUT

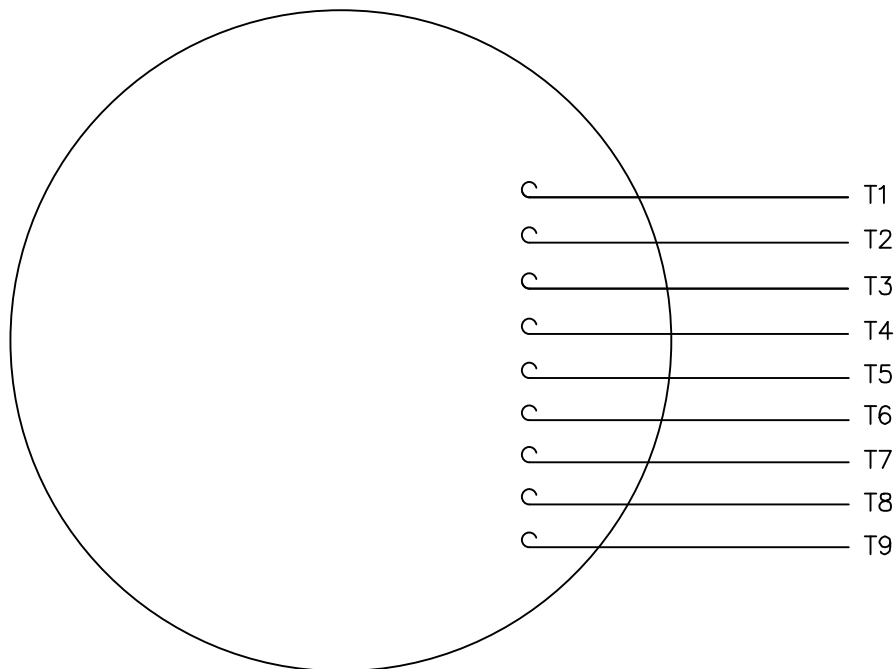
MAXIMUM FACE RUNOUT TO BE .004 T.I.R.
MAXIMUM PILOT ECCENTRICITY TO BE .004 T.I.R.
PERMISSIBLE SHAFT RUNOUT TO BE .002 T.I.R.

DASH NO.	"C"	"AD"
850	12.78	7.88
900	13.28	8.38
950	13.78	8.88
1000	14.28	9.38
1050	14.78	9.88
1100	15.28	10.38
1150	15.78	10.88

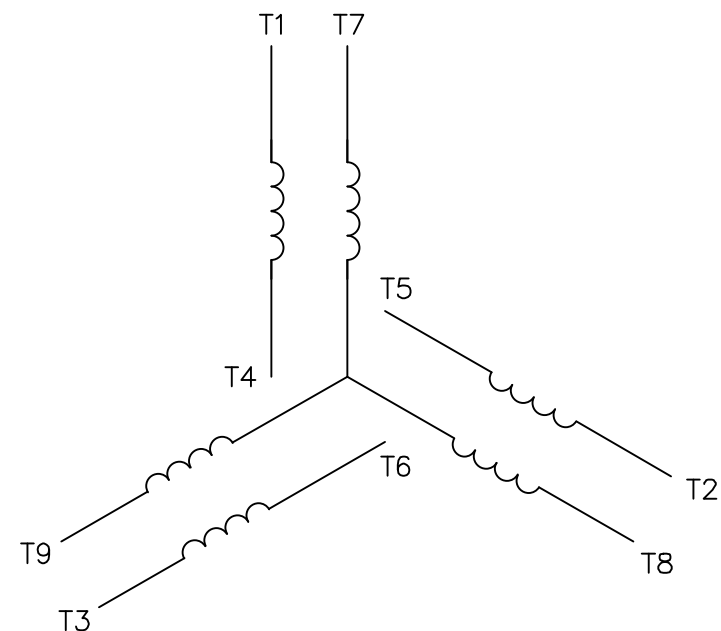
TOLERANCES UNLESS SPECIFIED		DEC.		INCHES	
.X	±.1	GR	.XX	±.03	
.01	±.005	JD	.XXX	±.005	
.001	±.0005	LST	.XXXX	±.0005	
NO.	REVISION	BY & DATE	CHK	ANG	±1/2"
03	CSA LABEL and XRI DECAL ADDED	SAJ 07/03/15	GR	.XX	±.03
02	CONDUIT BOX UPDATED	PVR 04/08/14	JD	.XXX	±.005
01	ADD DECAL 080994-01 PER ISAAC 11-0611	LST 2/10/11	LST	.XXXX	±.0005
THIS DRAWING IN DESIGN AND DETAIL IS OUR PROPERTY AND MUST NOT BE USED EXCEPT IN CONNECTION WITH OUR WORK. ALL RIGHTS OF DESIGN AND INVENTION ARE RESERVED. THIS IS AN ELECTRONICALLY GENERATED DOCUMENT - DO NOT SCALE THIS PRINT					
RFP			CHK	ANG	±1/2"
DIST	NLV				

MARATHON ELECTRIC		DRAWN KVN 12/11/2007	
TITLE		CHK	APPD
OUTLINE - 180T FRAME		SCALE	1=2
DRIP PROOF - "C" FACE		REF	035574 & 35445
MATERIAL		FMF	184TIDW9308
FINISH		PREV	
CAD FILE	035593	SIZE	DRAWING NO.
B			035593
		REV.	03


VIEW FROM OUTSIDE OF MOTOR AT SWITCH END.



LINE LEADS



VOLTAGE	L1	L2	L3	JOIN & INSULATE
HIGH	T1	T2	T3	(T4,T7) (T5,T8) (T6,T9)
LOW	T1,T7	T2,T8	T3,T9	T4,T5,T6

				TOLERANCES UNLESS SPECIFIED			DRAWN RDW 04/12/02			
				DEC.	INCHES		CHK			
				.X	±.1		APPD			
				.XX	±.01		SCALE 1=1			
				.XXX	±.005	TITLE EXTERNAL WIRING DIAGRAM 3 PHASE W/O PROTECTOR			REF FIG.2-51	
				.XXXX	±.0005	MAT'L. DECAL - 004014			FMF	
NO.	REVISION	BY & DATE	CHK	ANG	±1/2"	FINISH			PREV	
THIS DRAWING IN DESIGN AND DETAIL IS OUR PROPERTY AND MUST NOT BE USED EXCEPT IN CONNECTION WITH OUR WORK ALL RIGHTS OF DESIGN AND INVENTION ARE RESERVED THIS IS AN ELECTRONICALLY GENERATED DOCUMENT - DO NOT SCALE THIS PRINT			RFP 04/12/02		CAD FILE 00501001ME			SIZE	DRAWING NO.	REV.
			DIST					A	005010-01ME	