

# PRODUCT INFORMATION PACKET



Model No: 184TTDW14017

Catalog No: C105B

General Purpose Motor, 7.50 & 5 HP, 3 Ph, 60 & 50 Hz, 230/460 & 190/380 V, 3600 & 3000 RPM,  
184TC Frame, DP

Regal and Marathon are trademarks of Regal Rexnord Corporation or one of its affiliated companies.

©2023 Regal Rexnord Corporation, All Rights Reserved. MC017097E

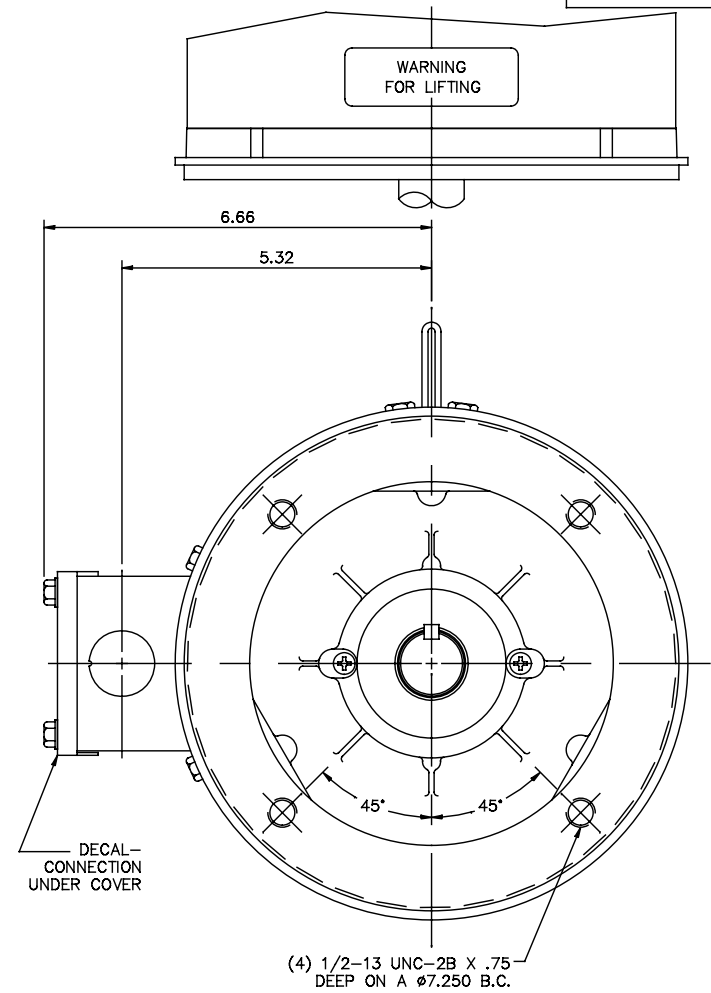
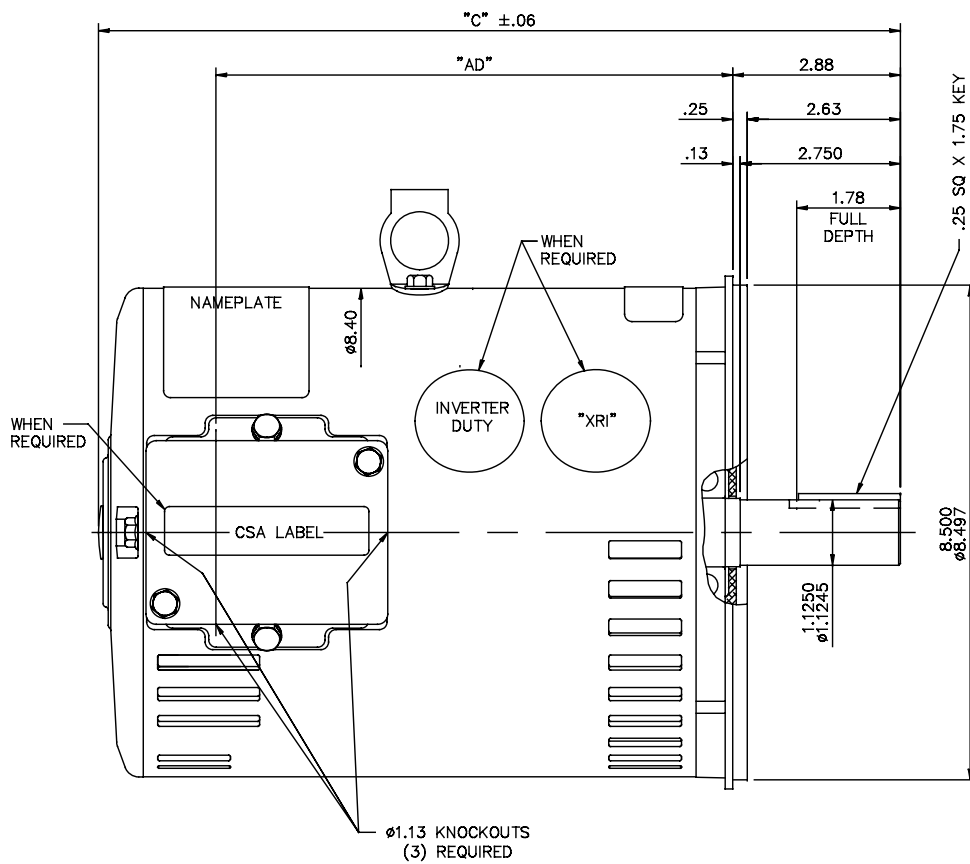


### Nameplate Specifications

Phase	3	Output HP	7.50 & 5 Hp
Output KW	5.6 & 3.7 kW	Voltage	230/460 & 190/380 V
Speed	3470 & 2915 rpm	Service Factor	1.15 & 1.15
Frame	184TC	Enclosure	Drip Proof
Thermal Protection	No Protection	Efficiency	87.5 & 88.5 %
Ambient Temperature	40 °C	Frequency	60 & 50 Hz
Current	17.6/8.8 & 14.4/7.2 A	Power Factor	90.5
Duty	Continuous	Insulation Class	F
Design Code	B	KVA Code	H
Drive End Bearing Size	6206	Opp Drive End Bearing Size	6205
UL	Recognized	CSA	Y
CE	Y	IP Code	22
Number of Speeds	1		


### Technical Specifications

Electrical Type	Squirrel Cage Induction Run	Starting Method	Across The Line
Poles	2	Rotation	Reversible
Resistance Main	0 Ohms	Mounting	Round
Motor Orientation	Horizontal	Drive End Bearing	Ball
Opp Drive End Bearing	Ball	Frame Material	Rolled Steel
Shaft Type	T	Overall Length	14.25 in
Frame Length	10.00 in	Shaft Diameter	1.125 in
Shaft Extension	2.75 in	Assembly/Box Mounting	F1 ONLY
Connection Drawing	005010.01ME	Outline Drawing	035593-1000



GASKETS THROUGHOUT

MAXIMUM FACE RUNOUT TO BE .004 T.I.R.  
MAXIMUM PILOT ECCENTRICITY TO BE .004 T.I.R.  
PERMISSIBLE SHAFT RUNOUT TO BE .002 T.I.R.

					TOLERANCES UNLESS SPECIFIED				DRAWN KWN 12/11/2007	
					DEC. INCHES				CHK	
					.X ±.1				APPD	
DASH NO.	"C"	"AD"								
850	12.78	7.88	03	CSA LABLE and XRI DECAL ADDED	SAJ 07/03/15	GR	.XX ±.03	TITLE OUTLINE - 180T FRAME		SCALE 1=2
900	13.28	8.38	02	CONDUIT BOX UPDATED	PVR 04/08/14	JD	.XXX ±.005	DRIP PROOF - "C" FACE		REF 035574 & 35445
950	13.78	8.88	01	ADD DECAL 080994-01 PER ISAAC 11-0611	LST 2/10/11		.XXXX ±.0005	MAT'L		FMF 184TIDW9308
1000	14.28	9.38	NO.	REVISION	BY & DATE	CHK	ANG ±1/2"	FINISH		PREV
1050	14.78	9.88	THIS DRAWING IN DESIGN AND DETAIL IS OUR PROPERTY AND MUST NOT BE USED EXCEPT IN CONNECTION WITH OUR WORK ALL RIGHTS OF DESIGN AND INVENTION ARE RESERVED				RFP	CAD FILE	035593	SIZE B
1100	15.28	10.38	THIS IS AN ELECTRONICALLY GENERATED DOCUMENT - DO NOT SCALE THIS PRINT				DIST NLV	DRAWING NO. 035593		REV. 03
1150	15.78	10.88								

VIEW FROM OUTSIDE OF MOTOR AT SWITCH END.



## LINE LEADS



VOLTAGE	L1	L2	L3	JOIN & INSULATE
HIGH	T1	T2	T3	(T4,T7) (T5,T8) (T6,T9)
LOW	T1,T7	T2,T8	T3,T9	T4,T5,T6

NO.	REVISION	BY & DATE	CHK	TOLERANCES UNLESS SPECIFIED		TITLE	DRAWN RDW 04/12/02
				DEC.	INCHES		
				.X	±.1	EXTERNAL WIRING DIAGRAM 3 PHASE W/O PROTECTOR	CHK
				.XX	±.01		APPD
				.XXX	±.005		SCALE 1=1
				.XXXX	±.0005		REF FIG.2-51
				ANG	±1/2°	MAT'L. DECAL - 004014	FMF
						FINISH	PREV
THIS DRAWING IN DESIGN AND DETAIL IS OUR PROPERTY AND MUST NOT BE USED EXCEPT IN CONNECTION WITH OUR WORK ALL RIGHTS OF DESIGN AND INVENTION ARE RESERVED THIS IS AN ELECTRONICALLY GENERATED DOCUMENT - DO NOT SCALE THIS PRINT				RFP	04/12/02	CAD FILE 00501001ME	SIZE A
				DIST			DRAWING NO. 005010-01ME
							REV.