

# PRODUCT INFORMATION PACKET

Model No: 184TTDR7287

Catalog No: Y486

Other Purpose Motor, 5,1.25 HP, 3 Ph, 60 Hz, 200-230 V, 1800 RPM, 184T Frame, DP



Regal and are trademarks of Regal Rexnord Corporation or one of its affiliated companies.  
©2022 Regal Rexnord Corporation, All Rights Reserved. MC017097E

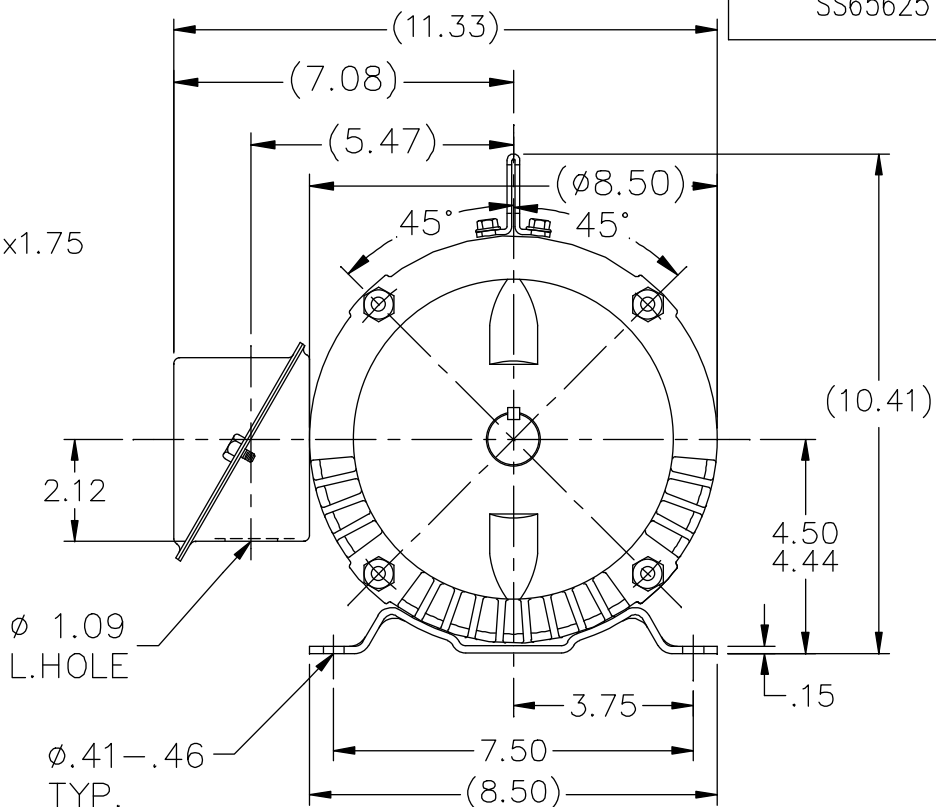
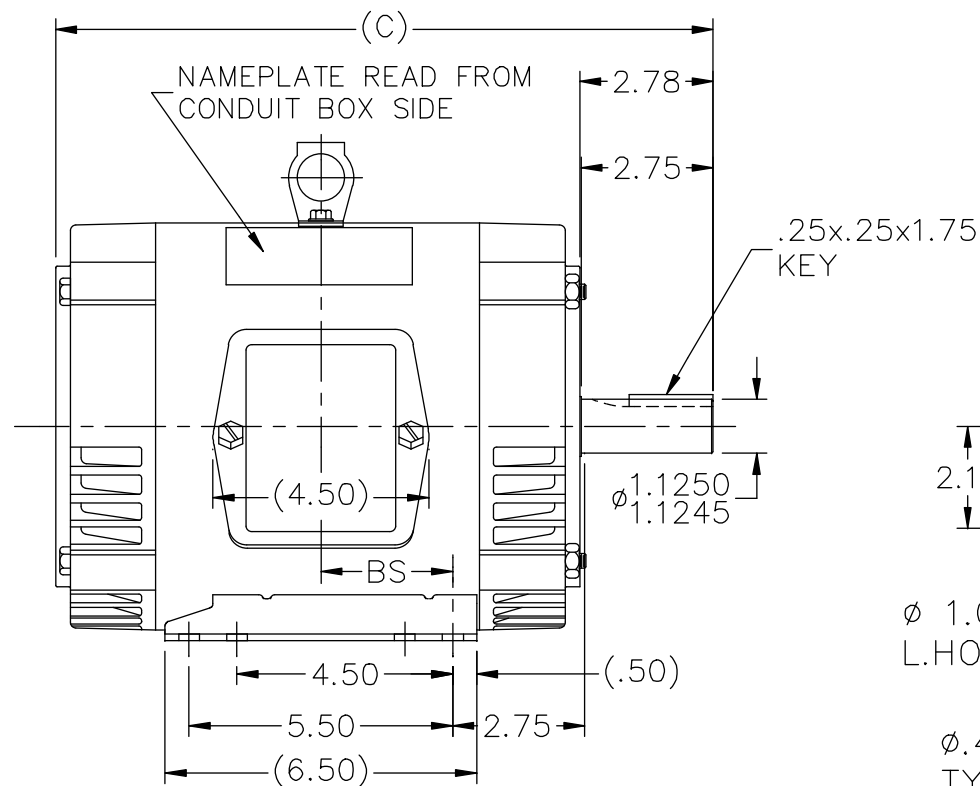
### Nameplate Specifications

Output HP	5,1.25 Hp	Output KW	3.7 kW
Frequency	60 Hz	Voltage	200-230 V
Current	15.1-14.2,6-6.23 A	Speed	1755,865 rpm
Service Factor	1.15	Phase	3
Efficiency	85.5 %	Power Factor	77
Duty	Continuous	Insulation Class	F
Design Code	1VT	KVA Code	M
Frame	184T	Enclosure	Drip Proof
Thermal Protection	No Protection	Ambient Temperature	40 °C
Drive End Bearing Size	6206	Opp Drive End Bearing Size	6203
UL	Recognized	CSA	Y
CE	Y	IP Code	22
Number of Speeds	2		

### Technical Specifications

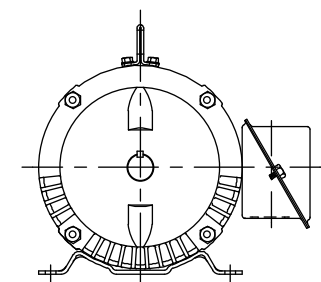
Electrical Type	Squirrel Cage Induction Run	Starting Method	Across The Line
Poles	4/8	Rotation	Reversible
Resistance Main	3.35 Ohms	Mounting	Rigid Base
Motor Orientation	Horizontal	Drive End Bearing	Ball
Opp Drive End Bearing	Ball	Frame Material	Rolled Steel
Shaft Type	T	Overall Length	14.72 in
Frame Length	7.75 in	Shaft Diameter	1.130 in
Shaft Extension	2.78 in	Assembly/Box Mounting	F1/F2 Capable
Connection Drawing	A-EE7322	Outline Drawing	A-SS65625-775

SS65625




BOX CAN BE ROTATED IN 90° STEPS.

DASH	FR.	C	BS	MOUNTING	DASH	FR.	C	BS	MOUNTING
575	182T	12.72	2.25	F1 OR F2	775	182T	14.72	3.25	F1 ONLY
625	182T	13.22	2.50	F1 OR F2	775	184T	14.72	3.25	F1 ONLY
675	182T	13.72	2.75	F1 OR F2	825	184T	15.22	3.50	F1 ONLY
675	184T	13.72	2.75	F1 OR F2	875	184T	15.72	3.75	F1 ONLY
725	182T	14.22	3.00	F1 ONLY	925	184T	16.22	4.00	F1 ONLY
725	184T	14.22	3.00	F1 ONLY					



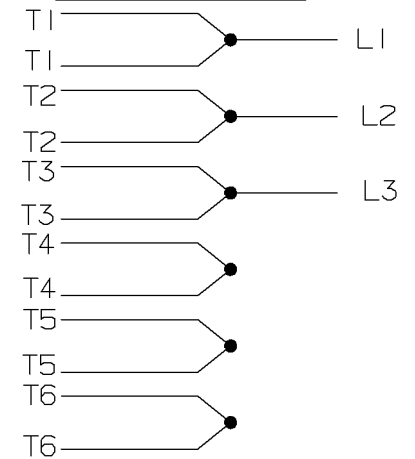
F2 VIEW (WHEN APPLICABLE)

				TOLERANCES UNLESS SPECIFIED			DRAWN ML 12-28-1987			
14	UPDATED DRAWING	RJW 04-20-2007		DEC.	INCHES		CHK GK 12-28-1987			
13	REDRAWN IN AUTOCAD	TAT 06-29-2004	ML	.X	±.1	TITLE OUTLINE 180T FR. – BB – TS – DR. PR.	APPD FG 12-28-1987			
12	ADDED LIFT LUG CN 34025	DRS 07-06-2001		.XX	±.03		SCALE 1=4			
11	ADDED MOUNTING TYPE CN 27451	DRS 02-17-2000		.XXX	±.005		REF			
10	CORRECTED DASH 725 & 775 CN 21725-50	BLR 01-15-1996		.XXXX	±.0005		FMF			
NO.	REVISION	BY & DATE	CHK	ANG	±7'30"	FINISH	PREV			
THIS DRAWING IN DESIGN AND DETAIL IS OUR PROPERTY AND MUST NOT BE USED EXCEPT IN CONNECTION WITH OUR WORK ALL RIGHTS OF DESIGN AND INVENTION ARE RESERVED THIS IS AN ELECTRONICALLY GENERATED DOCUMENT – DO NOT SCALE THIS PRINT			RFP		CAD FILE ss65625		SIZE A	DRAWING NO. SS65625	PAGE OF	REV. 14
			DIST LB							

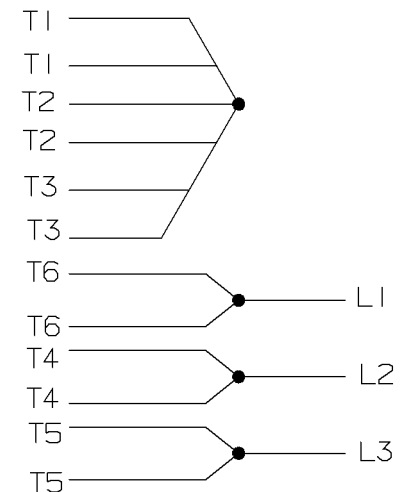
A- EE7322

FOR DUAL LEADS

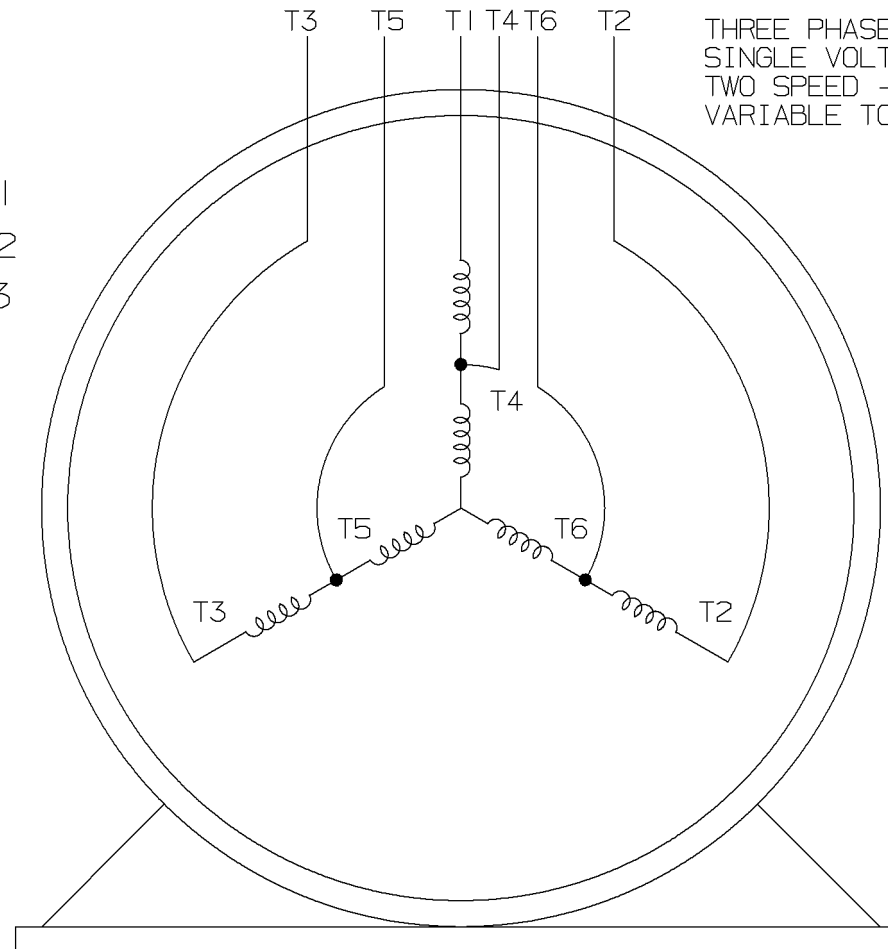
LOW SPEED



HIGH SPEED

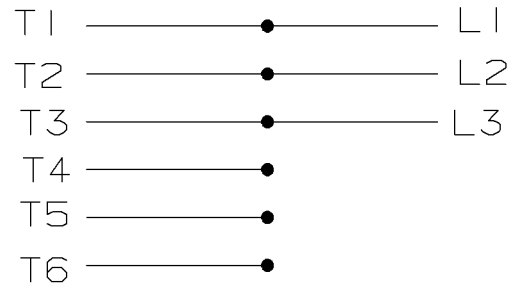


THREE PHASE MOTOR  
SINGLE VOLTAGE  
TWO SPEED - SGL. WDG.  
VARIABLE TORQUE

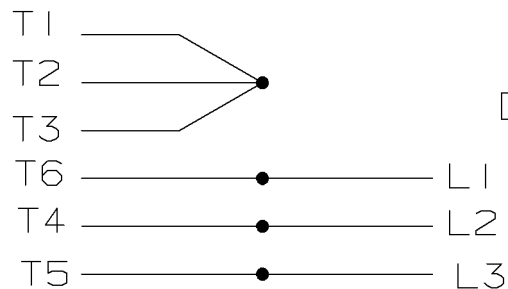


VIEW OF TERMINAL END

LOW SPEED




HIGH SPEED



T612C

T48B

				✓ MAX. SURFACE ROUGHNESS UNLESS NOTED OTHERWISE	UNLESS OTHERWISE SPECIFIED DIMENSIONS ARE IN INCHES TOL. ON XX±      XXX± .005      XXXX± .0005      ANGLES±			
				MATL SPEC				DRAWN BY PGK 12-26-1996
								CHKD BY ML 01-07-1997
				FINISH				
7	01-08-1997	REDRAWN ON CADD CN 24000-27	PGK	REFERENCE DRW.	WAUSAU, WISCONSIN 54401			APPD BY TB 01-07-1997
				PART NAME CONNECTION DIAGRAM				DRWG NO
REV	DATE	CHANGE	NAME	3Ø - SINGLE VOLTAGE - 2 SPEED				A- EE7322

SHOP BOOK

PURCHASED

DISTRIBUTION - WA - LB - WP - LM - BR

CADD FILE NO.

EE7322