

PRODUCT INFORMATION PACKET

Model No: 184TTDR7209

Catalog No: Y487

Other Purpose Motor, 5,1.25 HP, 3 Ph, 60 Hz, 460 V, 1800 RPM, 184T Frame, DP



Regal and are trademarks of Regal Rexnord Corporation or one of its affiliated companies.
©2022 Regal Rexnord Corporation, All Rights Reserved. MC017097E

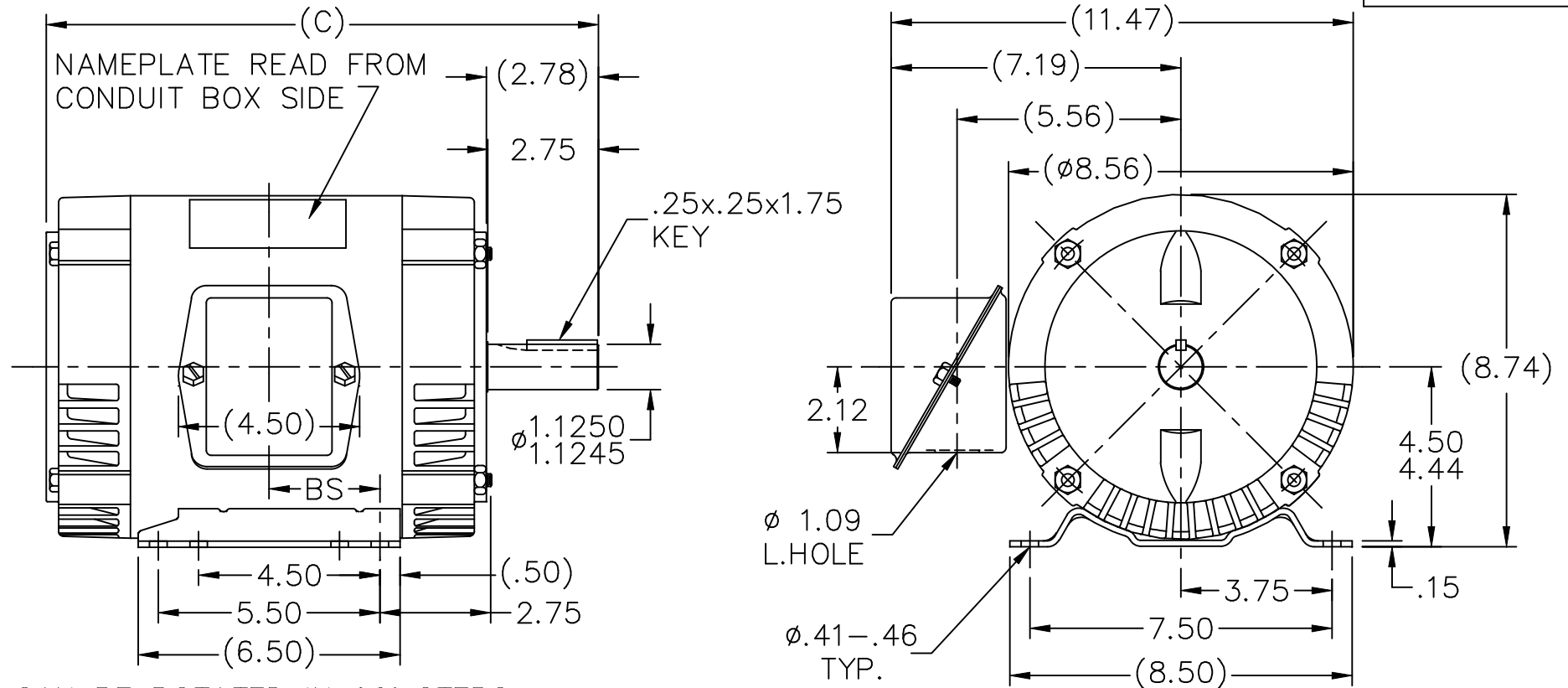
Nameplate Specifications

Output HP	5,1.25 Hp	Output KW	3.7 kW
Frequency	60 Hz	Voltage	460 V
Current	7.1,3 A	Speed	1745,872 rpm
Service Factor	1.15	Phase	3
Efficiency	82.5 %	Power Factor	84
Duty	Continuous	Insulation Class	B
Design Code	1VT	KVA Code	K
Frame	184T	Enclosure	Drip Proof
Thermal Protection	No Protection	Ambient Temperature	40 °C
Drive End Bearing Size	6206	Opp Drive End Bearing Size	6203
UL	Recognized	CSA	Y
CE	Y	IP Code	22
Number of Speeds	2		


Technical Specifications

Electrical Type	Squirrel Cage Induction Run	Starting Method	Across The Line
Poles	4/8	Rotation	Reversible
Mounting	Rigid Base	Motor Orientation	Horizontal
Drive End Bearing	Ball	Opp Drive End Bearing	Ball
Frame Material	Rolled Steel	Shaft Type	T
Overall Length	14.72 in	Frame Length	7.75 in
Shaft Diameter	1.125 in	Shaft Extension	2.75 in
Assembly/Box Mounting	F1 ONLY		
Outline Drawing	A-SS69240-775	Connection Drawing	A-EE7322

This is an uncontrolled document once printed or downloaded and is subject to change without notice. Date Created:09/07/2022



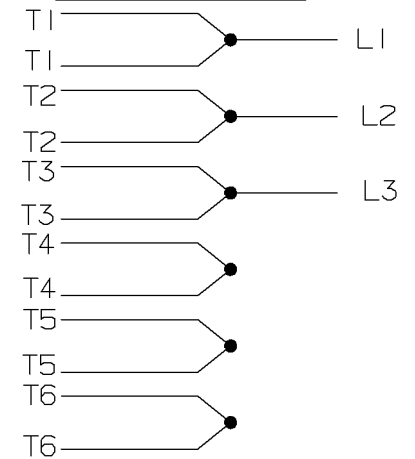
BOX CAN BE ROTATED IN 90° STEPS.

DASH	FR.	C	BS	MOUNTING	REMARKS	DASH	FR.	C	BS	MOUNTING	REMARKS					
575	182T	12.72	2.25	F1 OR F2		775	182T	14.72	3.25	F1 ONLY						
625	182T	13.22	2.50	F1 OR F2		775	184T	14.72	3.25	F1 ONLY						
675	182T	13.72	2.75	F1 OR F2		825	184T	15.22	3.50	F1 ONLY						
675	184T	13.72	2.75	F1 OR F2		875	184T	15.72	3.75	F1 ONLY						
725	182T	14.22	3.00	F1 ONLY		925	184T	16.22	4.00	F1 ONLY						
725	184T	14.22	3.00	F1 ONLY												
						TOLERANCES UNLESS SPECIFIED					DRAWN DRS 03-15-2002					
						DEC.	INCHES				CHK TB 03-15-2002					
						.X	±.1				APPD NL 03-15-2002					
						.XX	±.03				SCALE 1=4					
2	REDRAWN IN AUTOCAD				TAT 05-19-2005	ML	.XXX	±.005	TITLE OUTLINE 180T FR. – BB – TS – DR.PR.			REF				
1	NEW DRAWING CN 31492				DRS 03-15-2002		.XXXX	±.0005	MAT'L.			FMF				
NO.	REVISION				BY & DATE	CHK	ANG	±'7'30"	FINISH			PREV				
THIS DRAWING IN DESIGN AND DETAIL IS OUR PROPERTY AND MUST NOT BE USED EXCEPT IN CONNECTION WITH OUR WORK ALL RIGHTS OF DESIGN AND INVENTION ARE RESERVED THIS IS AN ELECTRONICALLY GENERATED DOCUMENT – DO NOT SCALE THIS PRINT						RFP			CAD FILE ss69240			SIZE	DRAWING NO.	PAGE	OF	REV.
						DIST LB						A	SS69240			2

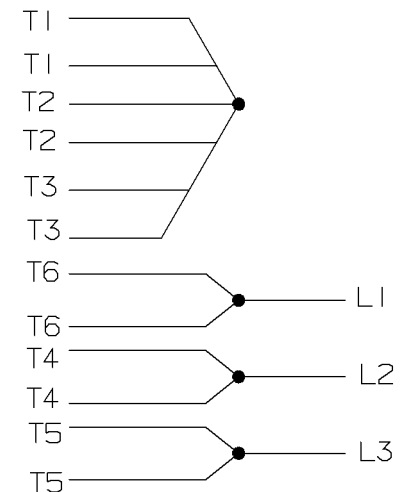
A- EE7322

FOR DUAL LEADS

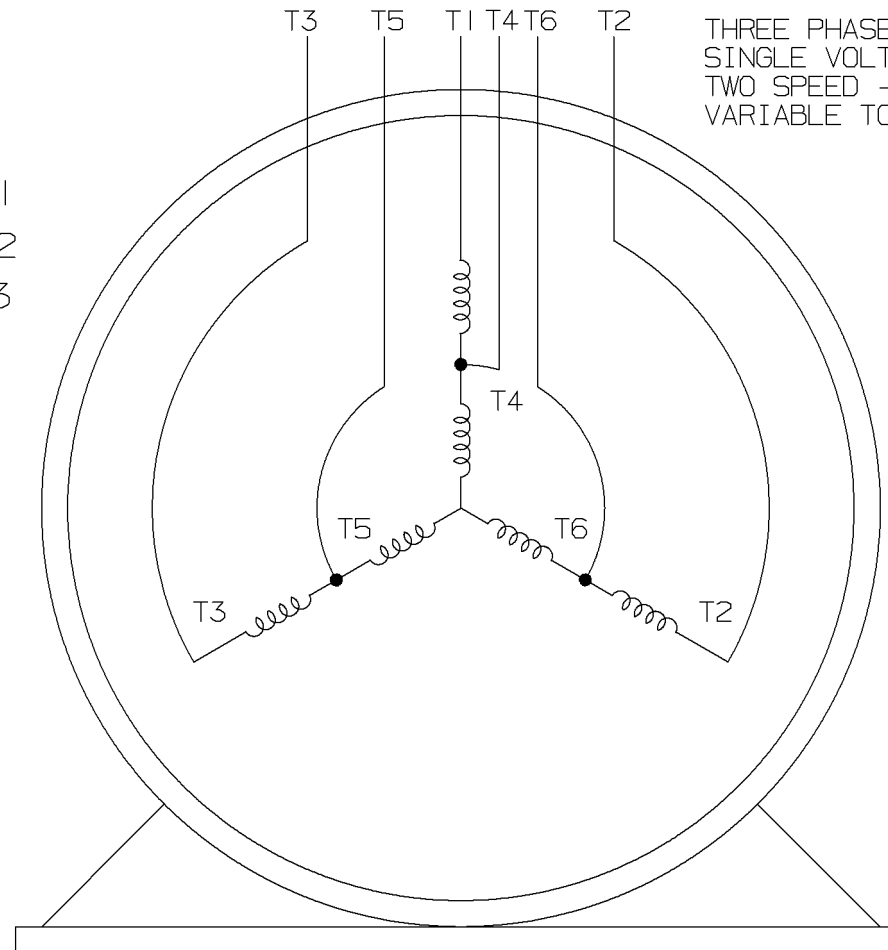
LOW SPEED



HIGH SPEED



THREE PHASE MOTOR
SINGLE VOLTAGE
TWO SPEED - SGL. WDG.
VARIABLE TORQUE

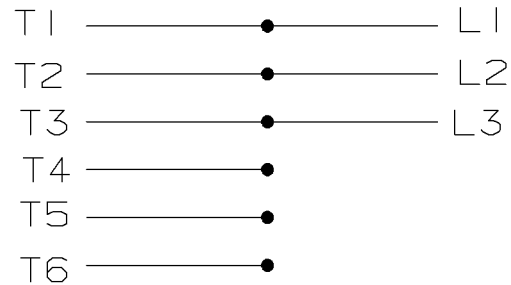


VIEW OF TERMINAL END

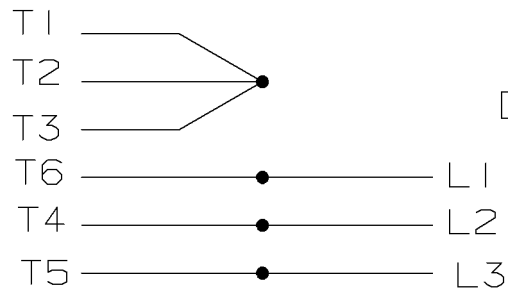
T612C


T48B

LOW SPEED



HIGH SPEED



				✓ MAX. SURFACE ROUGHNESS UNLESS NOTED OTHERWISE	UNLESS OTHERWISE SPECIFIED DIMENSIONS ARE IN INCHES TOL. ON XX± XXX±.005 XXXX±.0005 ANGLES±				
				MATL SPEC			DRAWN BY PGK	12-26-1996	
				FINISH			CHKD BY ML	01-07-1997	
7	01-08-1997	REDRAWN ON CADD CN 24000-27	PGK	REFERENCE DRW.	WAUSAU, WISCONSIN 54401		APPD BY TB	01-07-1997	
REV	DATE	CHANGE	NAME	PART NAME CONNECTION DIAGRAM 3Ø - SINGLE VOLTAGE - 2 SPEED				DRWG NO A- EE7322	

SHOP BOOK

PURCHASED

DISTRIBUTION - WA - LB - WP - LM - BR

CADD FILE NO.

EE7322