

# PRODUCT INFORMATION PACKET

**marathon®**  
Motors

Model No: 184TTDR6001

Catalog No: U249

7.5 HP General Purpose Motor, 3 phase, 3600 RPM, 208-230/460 V, 184T Frame, ODP  
General Purpose Motors



Regal and Marathon are trademarks of Regal Rexnord Corporation or one of its affiliated companies.  
©2021 Regal Rexnord Corporation, All Rights Reserved. MC017097E

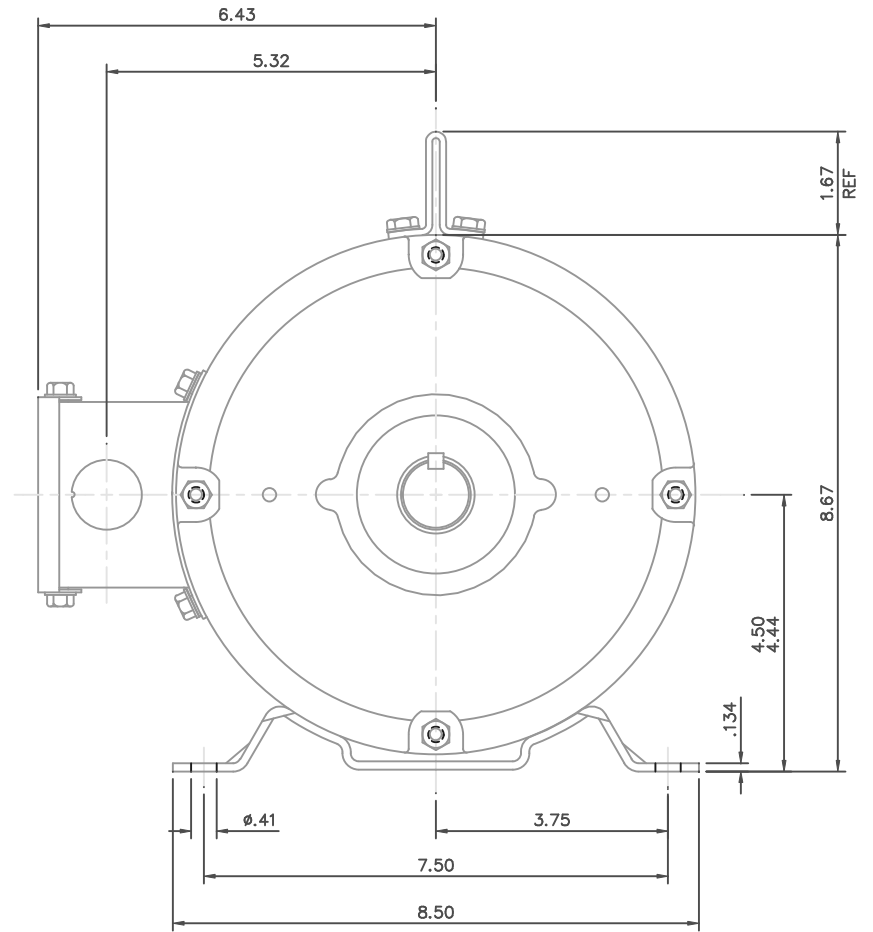
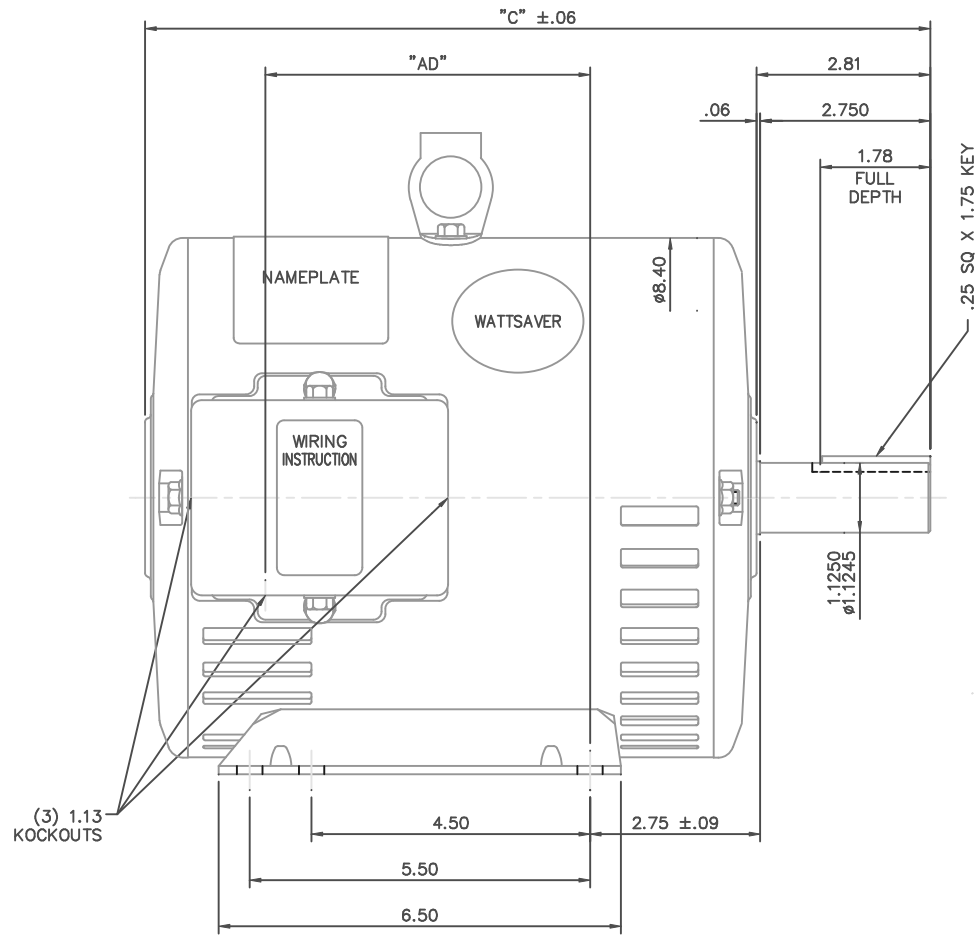
**RegalRexnord**

### Nameplate Specifications

Output HP	7.50 Hp	Output KW	5.6 kW
Frequency	60 Hz	Voltage	208-230/460 V
Current	19.6-17.6/8.8 A	Speed	3515 rpm
Service Factor	1.15	Phase	3
Efficiency	88.5 %	Power Factor	90
Duty	Continuous	Insulation Class	F
Design Code	B	KVA Code	J
Frame	184T	Enclosure	Drip Proof
Thermal Protection	Thermostats (N/C)	Ambient Temperature	40 °C
Drive End Bearing Size	6206	Opp Drive End Bearing Size	6205
UL	Recognized	CSA	Y
CE	Y	IP Code	22
Number of Speeds	1		

### Technical Specifications

Electrical Type	Squirrel Cage Induction Run	Starting Method	Across The Line
Poles	2	Rotation	Reversible
Resistance Main	1.4 Ohms	Mounting	Rigid Base
Motor Orientation	Horizontal	Drive End Bearing	Ball
Opp Drive End Bearing	Ball	Frame Material	Rolled Steel
Shaft Type	T	Overall Length	16.19 in
Frame Length	12.00 in	Shaft Diameter	1.125 in
Shaft Extension	2.75 in	Assembly/Box Mounting	F1 ONLY
Connection Drawing	005010-20ME	Outline Drawing	035455ME-1200



GASKETS THROUGHOUT

DASH NO.	"C"	"AD"
850	12.69	5.25
900	13.19	5.75
950	13.69	6.25
1000	14.19	6.75
1050	14.69	7.25
1100	15.19	7.75
1150	15.69	8.25
1200	16.19	8.75

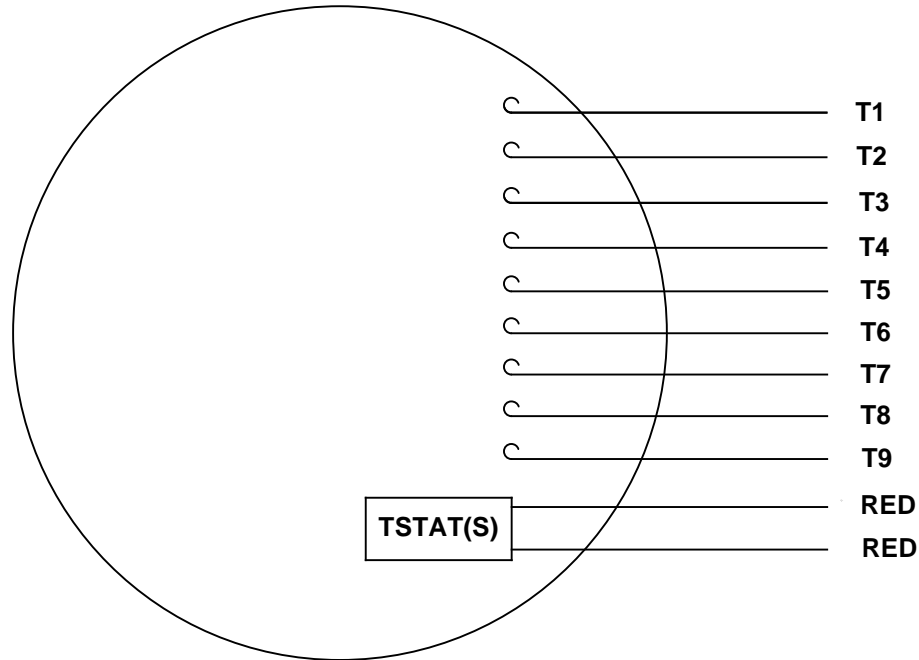
NO.		REVISION	BY & DATE	CHK	ANG	±1/2"	FINISH	SIZE		DRAWING NO.	REV.
THIS DRAWING IN DESIGN AND DETAIL IS OUR PROPERTY AND MUST NOT BE USED EXCEPT IN CONNECTION WITH OUR WORK ALL RIGHTS OF DESIGN AND INVENTION ARE RESERVED THIS IS AN ELECTRONICALLY GENERATED DOCUMENT - DO NOT SCALE THIS PRINT				RFP	1/9/06	CAD FILE	035455ME	B	035455ME		
				DIST	NLV						

TOLERANCES UNLESS SPECIFIED
DEC. INCHES
.X ±.1
.XX ±.03
.XXX ±.005
.XXXX ±.0005

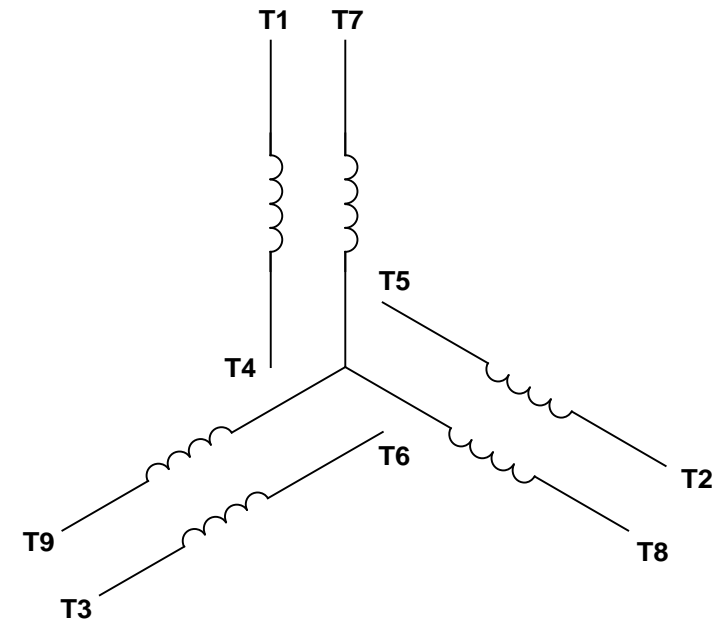
MARATHON ELECTRIC	
TITLE	OUTLINE - 180T FRAME DRIP PROOF - RIGID
MAT'L	

DRAWN	RDW 1/9/06
CHK	
APPD	KH 1/9/06
SCALE	1=2
REF	035351
FMF	
PREV	

VIEW FROM OUTSIDE OF MOTOR AT SWITCH END.


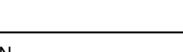


## LINE LEADS



VOLTAGE	L1	L2	L3	JOIN & INSULATE
HIGH	T1	T2	T3	(T4, T7) (T5, T8) (T6, T9)
LOW	T1, T7	T2, T8	T3, T9	T4, T5, T6

RBC PROPRIETARY AND CONFIDENTIAL INFORMATION  
This document is the property of REGAL BELOIT CORPORATION ("RBC") including its subsidiaries and divisions and contains proprietary information of RBC. This document is loaned on the express condition that neither it nor the information contained therein shall be disclosed to others without the express written consent of RBC, and that the information shall be used by the recipient only as approved expressly by RBC. This document shall be returned to RBC upon its request. This document may be subject to certain restrictions under U.S. export control laws and regulations.

				TOLERANCES UNLESS SPECIFIED			DRAWN RDW 04/13/04		
				DEC	INCHES		CHK		
				.X	±.1		APPR		
				.XX	±.01		SCALE 1:1		
				.XXX	±.005		REF		
--	REDRAWN IN SOLIDWORKS	VJB 02/08/11		.XXXX	±.0005	TITLE EXTERNAL WIRING DIAGRAM 3 PHASE	MAT'L DECAL - 004014 (TSTAT) - 080582	FMF 129027	
NO	REVISION	BY & DATE	CHK	ANG	±1/2°	FINISH	PAGE	OF	
<div>THIRD ANGLE PROJECTION</div> 			RFP		PREV		SIZE	DRAWING NO	REV
			NETWORK FILE NAME 00501020ME				A	005010-20ME	--