

# PRODUCT INFORMATION PACKET



Model No: 184TTDR4178

Catalog No: E918

2 HP General Purpose Motor, 3 phase, 1200 RPM, 200 V, 184T Frame, ODP  
General Purpose Motors

Regal and Marathon are trademarks of Regal Rexnord Corporation or one of its affiliated companies.  
©2021 Regal Rexnord Corporation, All Rights Reserved. MC017097E



**Nameplate Specifications**

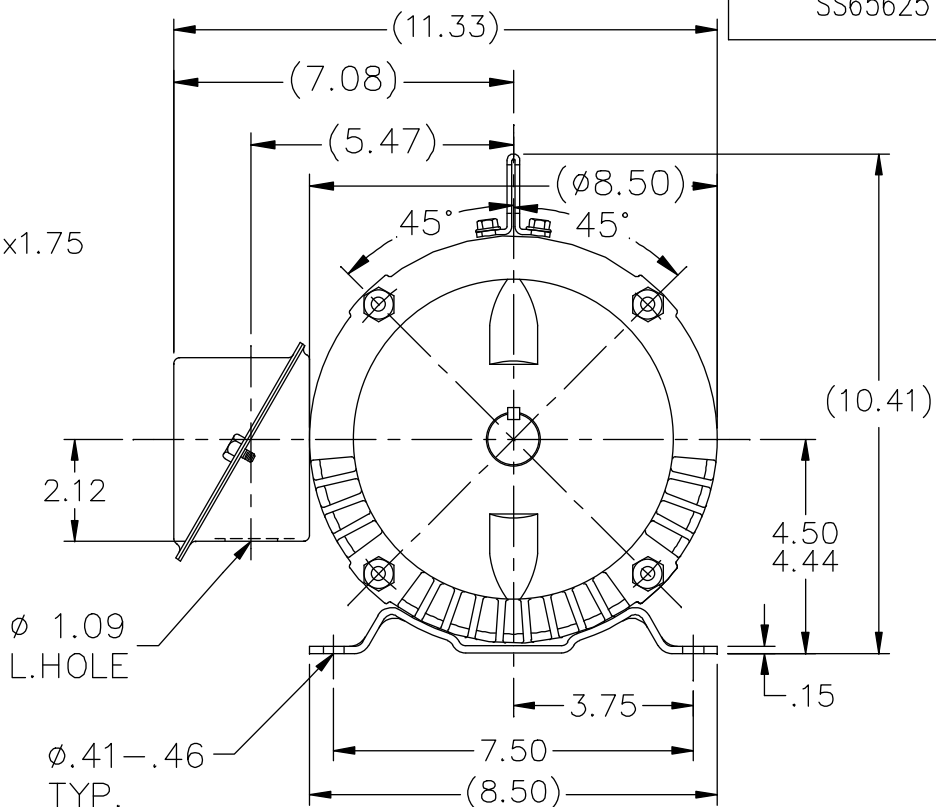
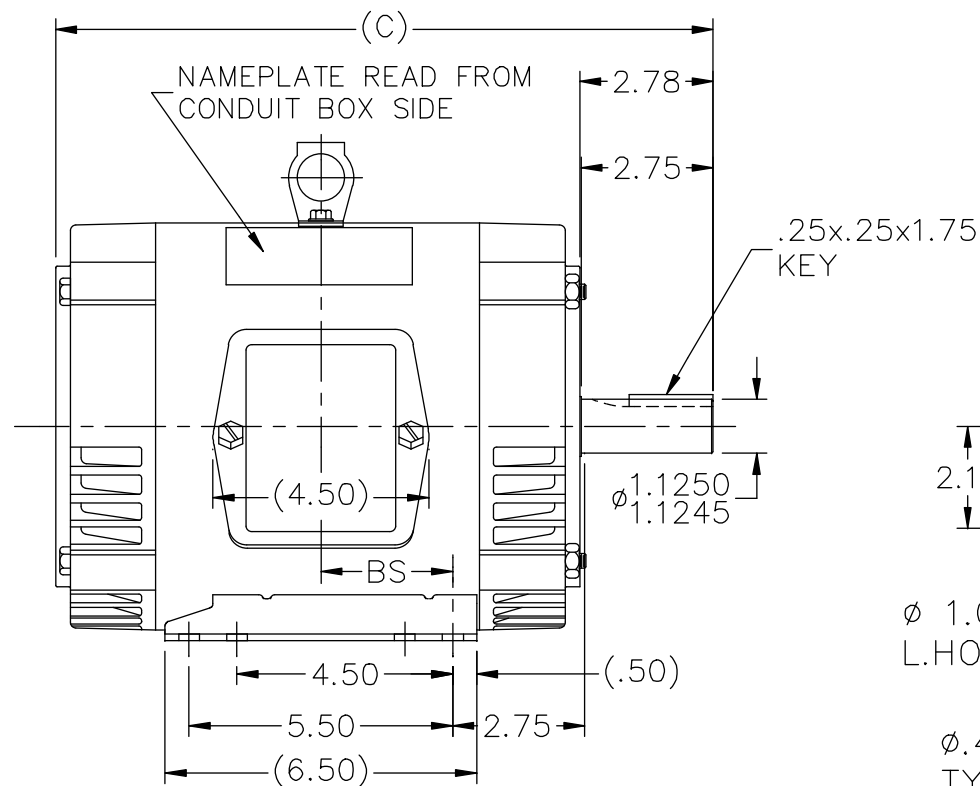
|                        |            |                            |            |
|------------------------|------------|----------------------------|------------|
| Output HP              | 2 Hp       | Output KW                  | 1.5 kW     |
| Frequency              | 60 Hz      | Voltage                    | 200 V      |
| Current                | 7.2 A      | Speed                      | 1165 rpm   |
| Service Factor         | 1.15       | Phase                      | 3          |
| Efficiency             | 85.5 %     | Power Factor               | 70         |
| Duty                   | Continuous | Insulation Class           | B          |
| Design Code            | B          | KVA Code                   | K          |
| Frame                  | 184T       | Enclosure                  | Drip Proof |
| Thermal Protection     | No         | Ambient Temperature        | 40 °C      |
| Drive End Bearing Size | 6206       | Opp Drive End Bearing Size | 6203       |
| UL                     | Recognized | CSA                        | Y          |
| CE                     | Y          | IP Code                    | 22         |
| Number of Speeds       | 1          |                            |            |

**Technical Specifications**

|                       |                             |                       |                 |
|-----------------------|-----------------------------|-----------------------|-----------------|
| Electrical Type       | Squirrel Cage Induction Run | Starting Method       | Across The Line |
| Poles                 | 6                           | Rotation              | Reversible      |
| Resistance Main       | 5.85 Ohms                   | Mounting              | Rigid Base      |
| Motor Orientation     | Horizontal                  | Drive End Bearing     | Ball            |
| Opp Drive End Bearing | Ball                        | Frame Material        | Rolled Steel    |
| Shaft Type            | T                           | Overall Length        | 15.22 in        |
| Frame Length          | 8.25 in                     | Shaft Diameter        | 1.125 in        |
| Shaft Extension       | 2.75 in                     | Assembly/Box Mounting | F1 Only         |
| Outline Drawing       | A-SS65625-825               | Connection Drawing    | A-EE7300        |

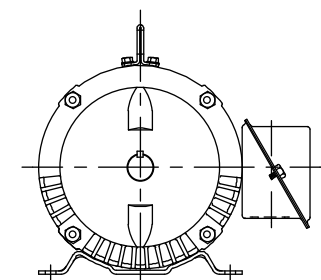
This is an uncontrolled document once printed or downloaded and is subject to change without notice. Date Created:10/12/2021

SS65625




BOX CAN BE ROTATED IN 90° STEPS.

| DASH | FR.  | C     | BS   | MOUNTING | DASH | FR.  | C     | BS   | MOUNTING |
|------|------|-------|------|----------|------|------|-------|------|----------|
| 575  | 182T | 12.72 | 2.25 | F1 OR F2 | 775  | 182T | 14.72 | 3.25 | F1 ONLY  |
| 625  | 182T | 13.22 | 2.50 | F1 OR F2 | 775  | 184T | 14.72 | 3.25 | F1 ONLY  |
| 675  | 182T | 13.72 | 2.75 | F1 OR F2 | 825  | 184T | 15.22 | 3.50 | F1 ONLY  |
| 675  | 184T | 13.72 | 2.75 | F1 OR F2 | 875  | 184T | 15.72 | 3.75 | F1 ONLY  |
| 725  | 182T | 14.22 | 3.00 | F1 ONLY  | 925  | 184T | 16.22 | 4.00 | F1 ONLY  |
| 725  | 184T | 14.22 | 3.00 | F1 ONLY  |      |      |       |      |          |



F2 VIEW (WHEN APPLICABLE)

|   |                                      |                |         |                                |                  |   |                     |             |            |               |      |
|---|--------------------------------------|----------------|---------|--------------------------------|------------------|---|---------------------|-------------|------------|---------------|------|
|   |                                      |                |         | TOLERANCES<br>UNLESS SPECIFIED |                  |  | DRAWN ML 12-28-1987 |             |            |               |      |
| 14  | UPDATED DRAWING                      | RJW 04-20-2007 |         | DEC.                           | INCHES           |   | CHK                 | GK          | 12-28-1987 |               |      |
| 13  | REDRAWN IN AUTOCAD                   | TAT 06-29-2004 | ML      | .X                             | ±.1              | TITLE OUTLINE<br>180T FR. – BB – TS – DR. PR.   | APPD                |             |            | FG 12-28-1987 |      |
| 12  | ADDED LIFT LUG CN 34025              | DRS 07-06-2001 |         | .XX                            | ±.03             |   | SCALE               |             | 1=4        |               |      |
| 11  | ADDED MOUNTING TYPE CN 27451         | DRS 02-17-2000 |         | .XXX                           | ±.005            |   | REF                 |             |            |               |      |
| 10  | CORRECTED DASH 725 & 775 CN 21725-50 | BLR 01-15-1996 |         | .XXXX                          | ±.0005           |   | FMF                 |             |            |               |      |
| NO.   | REVISION                             | BY & DATE      | CHK     | ANG                            | ±7'30"           | FINISH  | PREV                |             |            |               |      |
| THIS DRAWING IN DESIGN AND DETAIL IS OUR PROPERTY AND MUST NOT BE USED EXCEPT IN CONNECTION WITH OUR WORK ALL RIGHTS OF DESIGN AND INVENTION ARE RESERVED<br>THIS IS AN ELECTRONICALLY GENERATED DOCUMENT – DO NOT SCALE THIS PRINT |                                      |                | RFP     |                                | CAD FILE ss65625 |   | SIZE<br>A           | DRAWING NO. | PAGE       | OF            | REV. |
|   |                                      |                | DIST LB |                                |                  |   |                     | SS65625     |            | 14            |      |

THREE PHASE - SINGLE VOLTAGE  
MOTOR - CONDUIT BOX @ 'A'

TO REVERSE ROTATION:  
INTERCHANGE ANY TWO  
LINE LEAD CONNECTIONS.

TERMINAL BLOCK WHEN SPECIFIED



IF MOTOR HAS  
6 LEADS



A-9806 DECAL

OPTIONAL CORD  
CONNECTION



VIEW OF TERMINAL END

|   |                    |                    |
|---|--------------------|--------------------|
| DRAWING REVISION<br>AB  | REVISION BY<br>JJB | DATE<br>06-27-2017 |
| ECO<br>ECO-0125361  | APPROVED BY<br>TB  | DATE<br>06-27-2017 |
| ECO DESCRIPTION<br>UPDATED TO CURRENT STANDARDS   |                    |                    |
| <small>COPYRIGHT REGAL BELOIT AMERICA, INC. ALL RIGHTS RESERVED.<br/>         PROPRIETARY AND CONFIDENTIAL INFORMATION - THIS DOCUMENT IS THE PROPERTY OF<br/>         REGAL BELOIT AMERICA, INC. ("OWNER") AND CONTAINS OWNER'S PROPRIETARY<br/>         INFORMATION. ANY PERSON, CORPORATION OR OTHER FIRM RECEIVING IT IS DEEMED,<br/>         BY RECEIVING IT, TO AGREE THAT IT, AND/OR ANY PART OF IT, SHALL NOT BE DISCLOSED<br/>         TO ANY PERSON, CORPORATION OR OTHER ENTITY, DUPLICATED, AND/OR USED, EXCEPT<br/>         AS EXPRESSLY APPROVED IN WRITING IN ADVANCE BY OWNER. THIS DOCUMENT SHALL<br/>         BE RETURNED TO OWNER UPON REQUEST. IT MAY BE SUBJECT TO CERTAIN<br/>         RESTRICTIONS UNDER APPLICABLE EXPORT CONTROL LAWS AND REGULATIONS.</small> |                    |                    |

|                           |
|---------------------------|
| DRAWN BY<br>DA            |
| DATE<br>03-26-1993        |
| APPROVED BY<br>TB         |
| DATE<br>03-26-1993        |
| REFERENCE                 |
| THIRD ANGLE<br>PROJECTION |



Regal Beloit America, Inc.

DESCRIPTION  
**CONNECTION DIAGRAM**  
EXTERNAL - SINGLE VOLTAGE - 3Ø MOTOR

MATERIAL PROCESS/FINISH

|           |                          |                 |
|-----------|--------------------------|-----------------|
| SIZE<br>A | DRAWING NUMBER<br>EE7300 | SHEET<br>1 OF 1 |
|-----------|--------------------------|-----------------|