

PRODUCT INFORMATION PACKET

marathon®
Motors

Model No: 184TTDR4166

Catalog No: U428

Other Purpose Motor, 5 & 4 HP, 3 Ph, 60 & 50 Hz, 208-230/460 & 190/380 V, 1800 & 1500 RPM,
184T Frame, DP



Regal and Marathon are trademarks of Regal Rexnord Corporation or one of its affiliated companies.

©2023 Regal Rexnord Corporation, All Rights Reserved. MC017097E

RegalRexnord

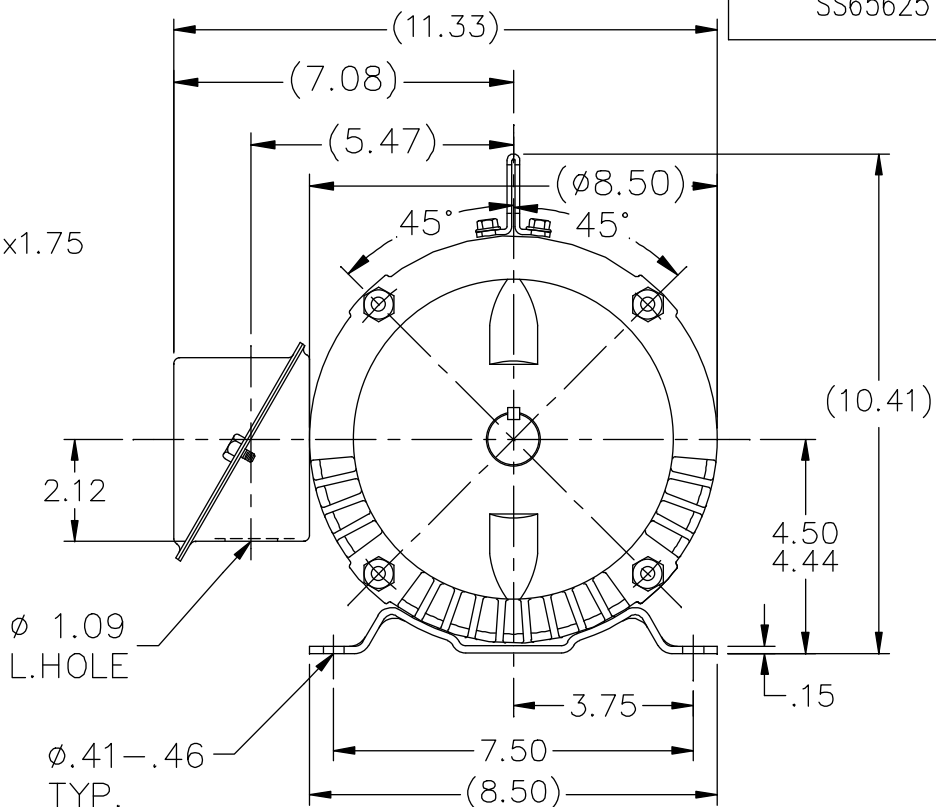
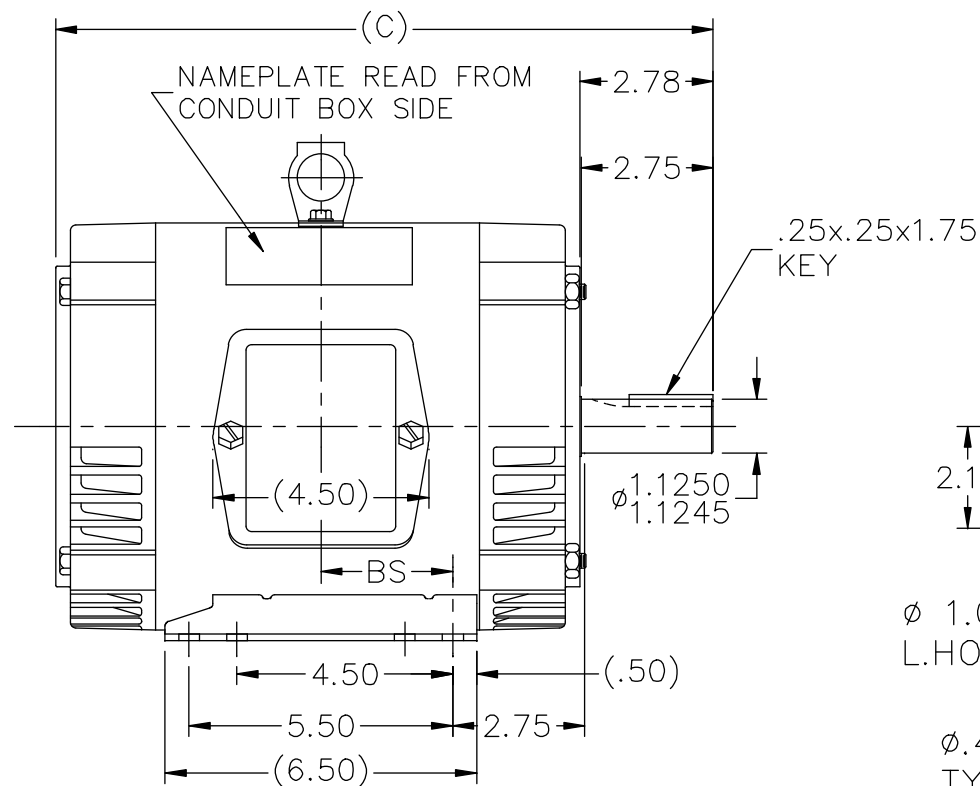
Nameplate Specifications

Phase	3	Output HP	5 & 4 Hp
Output KW	3.7 & 3.0 kW	Voltage	208-230/460 & 190/380 V
Speed	1750 & 1450 rpm	Service Factor	1.15 & 1.15
Frame	184T	Enclosure	Drip Proof
Thermal Protection	Automatic	Efficiency	87.5 & 87.5 %
Ambient Temperature	40 °C	Frequency	60 & 50 Hz
Current	14-13/6.5 & 12.6/6.3 A	Power Factor	82
Duty	Continuous	Insulation Class	B
Design Code	B	KVA Code	J
Drive End Bearing Size	6206	Opp Drive End Bearing Size	6203
UL	Recognized	CSA	Y
CE	Y	IP Code	22
Number of Speeds	1		

Technical Specifications

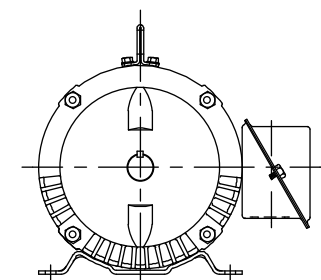
Electrical Type	Squirrel Cage Induction Run	Starting Method	Across The Line
Poles	4	Rotation	Reversible
Resistance Main	3.1 Ohms	Mounting	Rigid Base
Motor Orientation	Horizontal	Drive End Bearing	Ball
Opp Drive End Bearing	Ball	Frame Material	Rolled Steel
Shaft Type	T	Overall Length	15.22 in
Frame Length	8.25 in	Shaft Diameter	1.125 in
Shaft Extension	2.75 in	Assembly/Box Mounting	F1 ONLY
Outline Drawing	A-SS65625-825	Connection Drawing	A-EE7335

SS65625




BOX CAN BE ROTATED IN 90° STEPS.

DASH	FR.	C	BS	MOUNTING	DASH	FR.	C	BS	MOUNTING
575	182T	12.72	2.25	F1 OR F2	775	182T	14.72	3.25	F1 ONLY
625	182T	13.22	2.50	F1 OR F2	775	184T	14.72	3.25	F1 ONLY
675	182T	13.72	2.75	F1 OR F2	825	184T	15.22	3.50	F1 ONLY
675	184T	13.72	2.75	F1 OR F2	875	184T	15.72	3.75	F1 ONLY
725	182T	14.22	3.00	F1 ONLY	925	184T	16.22	4.00	F1 ONLY
725	184T	14.22	3.00	F1 ONLY					

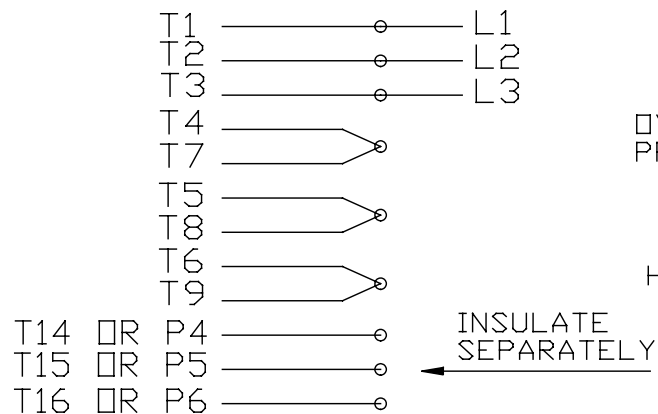


F2 VIEW (WHEN APPLICABLE)

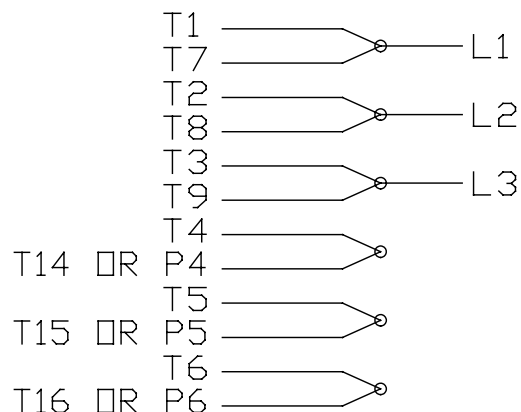
				TOLERANCES UNLESS SPECIFIED			DRAWN ML 12-28-1987				
14	UPDATED DRAWING	RJW 04-20-2007		DEC.	INCHES		CHK GK 12-28-1987				
13	REDRAWN IN AUTOCAD	TAT 06-29-2004	ML	.X	±.1		APPD FG 12-28-1987				
12	ADDED LIFT LUG CN 34025	DRS 07-06-2001		.XX	±.03		SCALE 1=4				
11	ADDED MOUNTING TYPE CN 27451	DRS 02-17-2000		.XXX	±.005		REF				
10	CORRECTED DASH 725 & 775 CN 21725-50	BLR 01-15-1996		.XXXX	±.0005	TITLE OUTLINE 180T FR. - BB - TS - DR. PR.		FMF			
NO.	REVISION	BY & DATE	CHK	ANG	±7'30"	FINISH		PREV			
THIS DRAWING IN DESIGN AND DETAIL IS OUR PROPERTY AND MUST NOT BE USED EXCEPT IN CONNECTION WITH OUR WORK ALL RIGHTS OF DESIGN AND INVENTION ARE RESERVED THIS IS AN ELECTRONICALLY GENERATED DOCUMENT - DO NOT SCALE THIS PRINT			RFP		CAD FILE ss65625		SIZE A	DRAWING NO. SS65625	PAGE 14	OF 14	REV.
			DIST LB								

EE7335

HIGH VOLTAGE CONNECTIONS

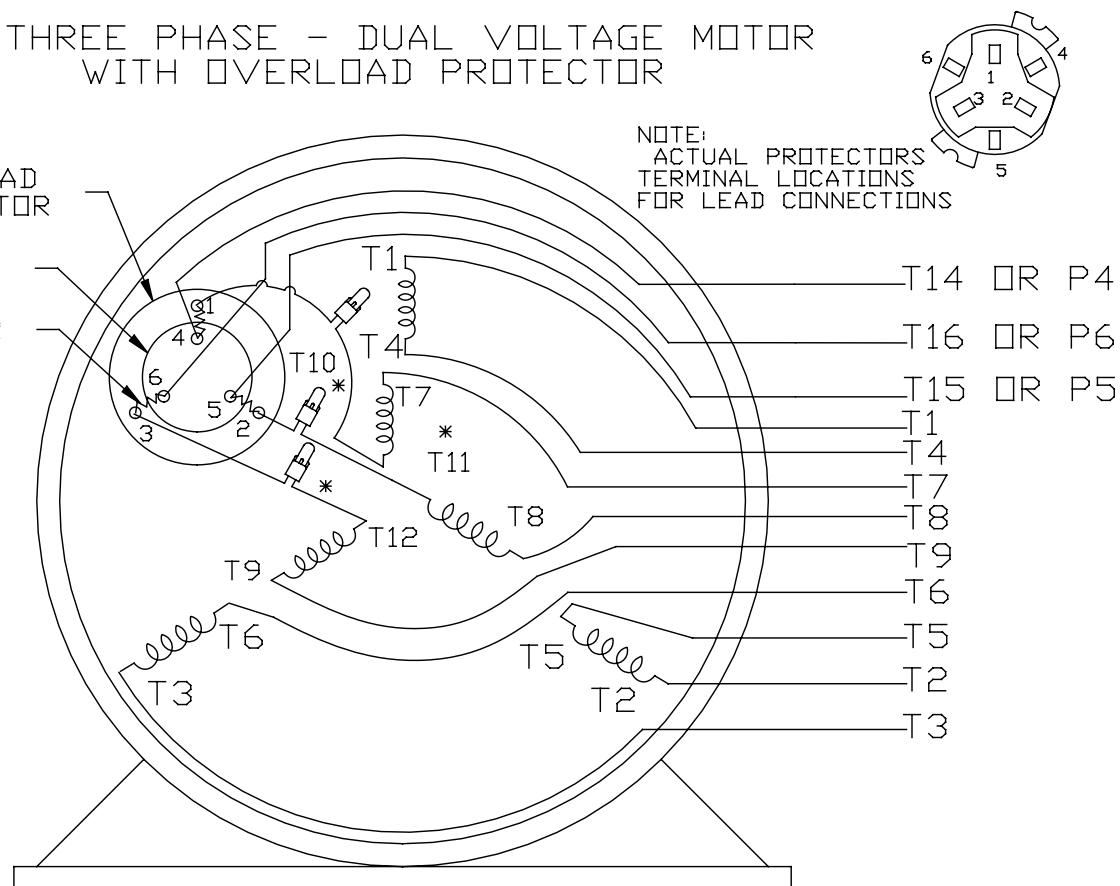


LOW VOLTAGE CONNECTIONS

THREE PHASE - DUAL VOLTAGE MOTOR
WITH OVERLOAD PROTECTOROVERLOAD
PROTECTOR

DISC


HEATER



VIEW OF TERMINAL END

* USE PRESSURE CONNECTORS FOR MT2 PLANT ONLY

 T2K
 T4D
 T6AN

NO.	REVISION	BY & DATE	CHK	ANG	TOLERANCES UNLESS SPECIFIED	 Regal Beloit America, Inc.	DRAWN KL 08-09-1993		
							CHK	ML	08/10/1993
17	CHANGED LOGO FROM MARATHON TO REGAL	KIR 02/16/16	AB	DEC.	INCHES	TITLE CONNECTION DIAGRAM 3Ø-DUAL VOLT WITH OVERLOAD PROTECTOR	APPD	GK	08/10/1993
16	PRESSURE CONNECTORS QUANTITY WAS 6	PVR 10/29/13	GR	.X	±.1		SCALE	1=1	
15	PRESSURE CONNECTORS ADDED	GR 03/04/13	SR	.XX	±.01		REF		
14	ADDED ACTUAL PROCECTOR VIEW CN 17481	KL 05/18/94		.XXX	±.005		FMF		
13	REDRAWN IN AUTO CAD	KL 08/11/93		.XXXX	±.0005	MAT'L.	PREV		
					FINISH				
THIS DRAWING IN DESIGN AND DETAIL IS OUR PROPERTY AND MUST NOT BE USED EXCEPT IN CONNECTION WITH OUR WORK ALL RIGHTS OF DESIGN AND INVENTION ARE RESERVED THIS IS AN ELECTRONICALLY GENERATED DOCUMENT - DO NOT SCALE THIS PRINT						RFP	CAD FILE	EE7335	SIZE
						DIST			DRAWING NO.
									EE7335
									REV.
									17