

# PRODUCT INFORMATION PACKET

**marathon®**  
Motors

Model No: 184TTDR4107

Catalog No: U404

General Purpose Motor, 7.50 & 5 HP, 3 Ph, 60 & 50 Hz, 208-230/460 & 190/380 V, 3600 & 3000 RPM,  
184TC Frame, DP



Regal and Marathon are trademarks of Regal Rexnord Corporation or one of its affiliated companies.

©2023 Regal Rexnord Corporation, All Rights Reserved. MC017097E

**RegalRexnord**

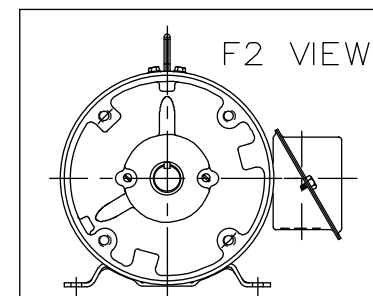
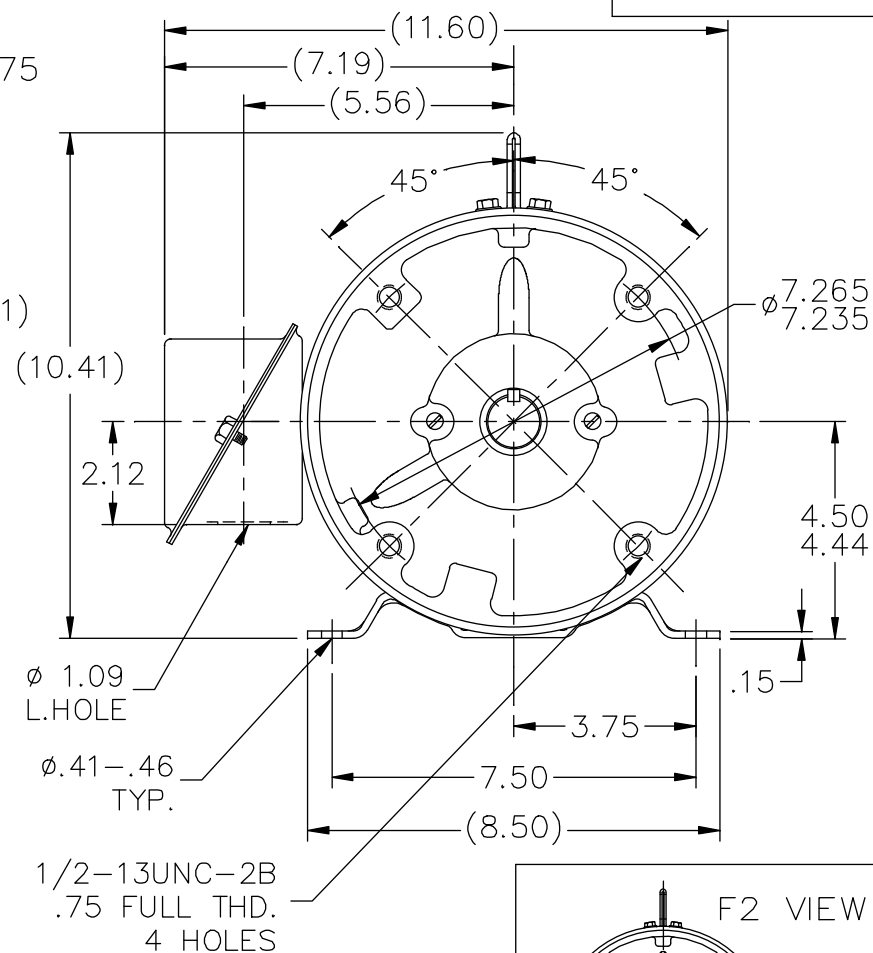
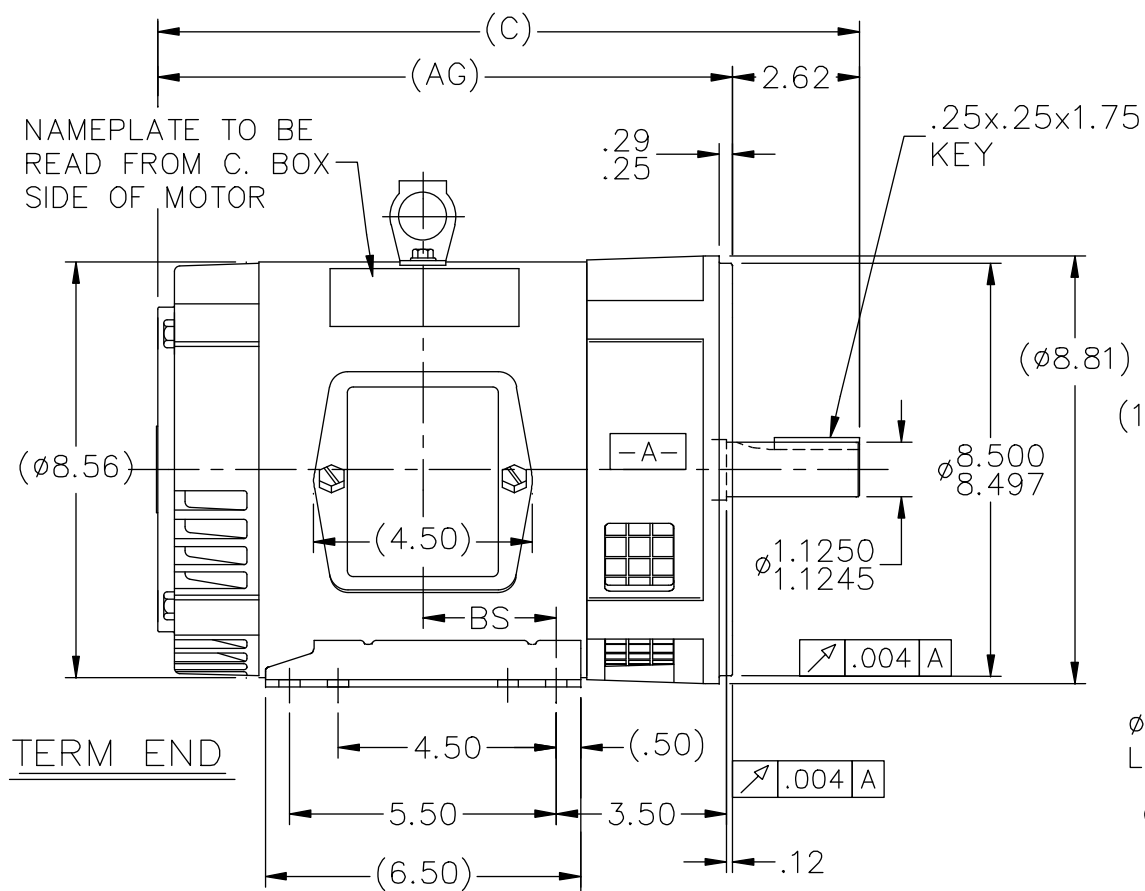
### Nameplate Specifications

Phase	3	Output HP	7.50 & 5 Hp
Output KW	5.6 & 3.7 kW	Voltage	208-230/460 & 190/380 V
Speed	3460 & 2900 rpm	Service Factor	1.15 & 1.15
Frame	184TC	Enclosure	Drip Proof
Thermal Protection	No Protection	Efficiency	87.5 & 87.5 %
Ambient Temperature	40 °C	Frequency	60 & 50 Hz
Current	20-17.6/8.8 & 14.4/7.2 A	Power Factor	90.5
Duty	Continuous	Insulation Class	B
Design Code	B	KVA Code	H
Drive End Bearing Size	6207	Opp Drive End Bearing Size	6205
UL	Recognized	CSA	Y
CE	Y	IP Code	22
Number of Speeds	1		

### Technical Specifications

Electrical Type	Squirrel Cage Induction Run	Starting Method	Across The Line
Poles	2	Rotation	Reversible
Resistance Main	1.86 Ohms	Mounting	Rigid Base
Motor Orientation	Horizontal	Drive End Bearing	Ball
Opp Drive End Bearing	Ball	Frame Material	Rolled Steel
Shaft Type	T	Overall Length	15.46 in
Frame Length	7.75 in	Shaft Diameter	1.125 in
Shaft Extension	2.75 in	Assembly/Box Mounting	F1 ONLY
Outline Drawing	A-SS63832-775	Connection Drawing	A-EE7308

SS63832



## NOTES:

1. BOX CAN BE ROTATED IN 90° STEPS.
2. BOX CAN BE MOUNTED ON OPP. SIDE BY REMOVING BRACKETS AND TURNING FRAME 180°.

DASH	FR.	C	AG	BS	MOUNTING
575	182T	13.46	10.84	2.25	F1 OR F2
675	182/4T	14.46	11.84	2.75	F1 OR F2
725	182/4T	14.96	12.34	3.00	F1 ONLY
775	182/4T	15.46	12.84	3.25	F1 ONLY
825	182/4T	15.96	13.34	3.50	F1 ONLY

NO.	REVISION	BY & DATE	CHK	ANG	±7'30"
14	REDRAWN IN AUTOCAD	TAT 06-29-2004	ML	TOLERANCES UNLESS SPECIFIED	
13	ADDED LIFT LUG CN 34025	NJS 07-23-2001		DEC.	INCHES
12	UPDATED TITLE BLOCK	DAH 01-08-2001		.X	±.1
11	REVISED MOUNTING CN 27400-320	CAE 11-12-1999		.XX	±.03
10	ADDED MOUNTING TYPE CN 27451	DRS 04-29-1999		.XXX	±.005
9	ADDED -675 (182T) CN 25600-2	BLR 01-06-1998		.XXXX	±.0005



TITLE OUTLINE  
180T FR. - DR.PR. - C' FACE

MAT'L.

FINISH

CAD FILE ss63832

RFP

DIST LB

SIZE A DRAWING NO. SS63832 PAGE OF 14 REV. 14

THIS DRAWING IN DESIGN AND DETAIL IS OUR PROPERTY AND MUST NOT BE USED EXCEPT IN CONNECTION WITH OUR WORK ALL RIGHTS OF DESIGN AND INVENTION ARE RESERVED THIS IS AN ELECTRONICALLY GENERATED DOCUMENT - DO NOT SCALE THIS PRINT



				TOLERANCES UNLESS SPECIFIED		 <b>Regal</b> Beloit America, Inc.	DRAWN RM	11/20/1990
5	CHG TO REGAL LOGO	SL 09/10/2015	AB	DEC.	INCHES		CHK	ML 11/21/1990
4	REVISED IEC NOTATIONS	MSG 11/15/2011	CMN	.X	±.1		APPD	SAS 04/24/2003
3	ADDED IEC NOTATIONS... (U1), (V1) ETC. MU95194	MSG 5/10/2010	MJS	.XX	±.02		SCALE	1=1
2	ADDED THE OPTIONAL CORD CONNECTION MU46318	RDH 04/24/2003	DRS	.XXX	±.005	TITLE CONNECTION DIAGRAM 3ø – DUAL VOLTAGE MOTOR		REF
1	REDRAWN	RM 11/20/1990		.XXXX	±.0005	MAT'L.		FMF
NO.	REVISION	BY & DATE	CHK	ANG	±7"30"	FINISH		PREV
THIS DRAWING IN DESIGN AND DETAIL IS OUR PROPERTY AND MUST NOT BE USED EXCEPT IN CONNECTION WITH OUR WORK ALL RIGHTS OF DESIGN AND INVENTION ARE RESERVED THIS IS AN ELECTRONICALLY GENERATED DOCUMENT – DO NOT SCALE THIS PRINT			RFP		CAD FILE ee7308		SIZE	DRAWING NO. PAGE OF REV.
			DIST WP				A	EE7308 5