

PRODUCT INFORMATION PACKET

marathon®
Motors

Model No: 184TTDR16022

Catalog No: U462A

5 HP Close-Coupled Pump Motor, 3 phase, 1800 RPM, 575 V, 184JM Frame, ODP
Close-Coupled Pump Motors



Regal and Marathon are trademarks of Regal Rexnord Corporation or one of its affiliated companies.
©2021 Regal Rexnord Corporation, All Rights Reserved. MC017097E

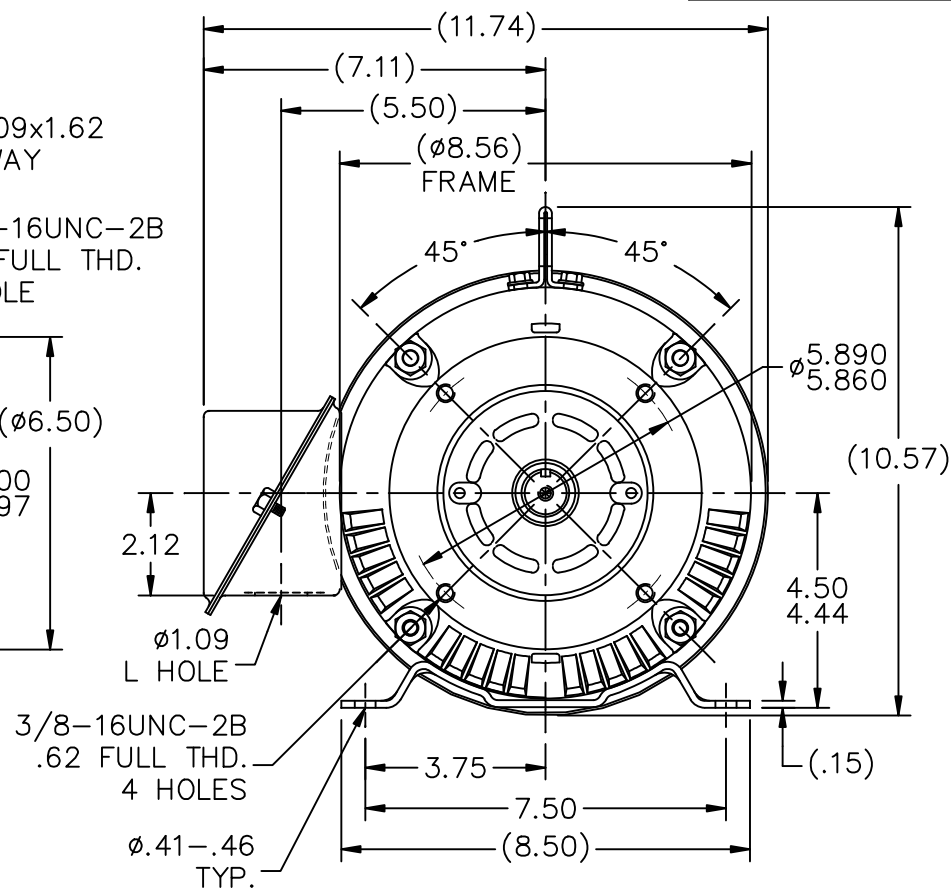
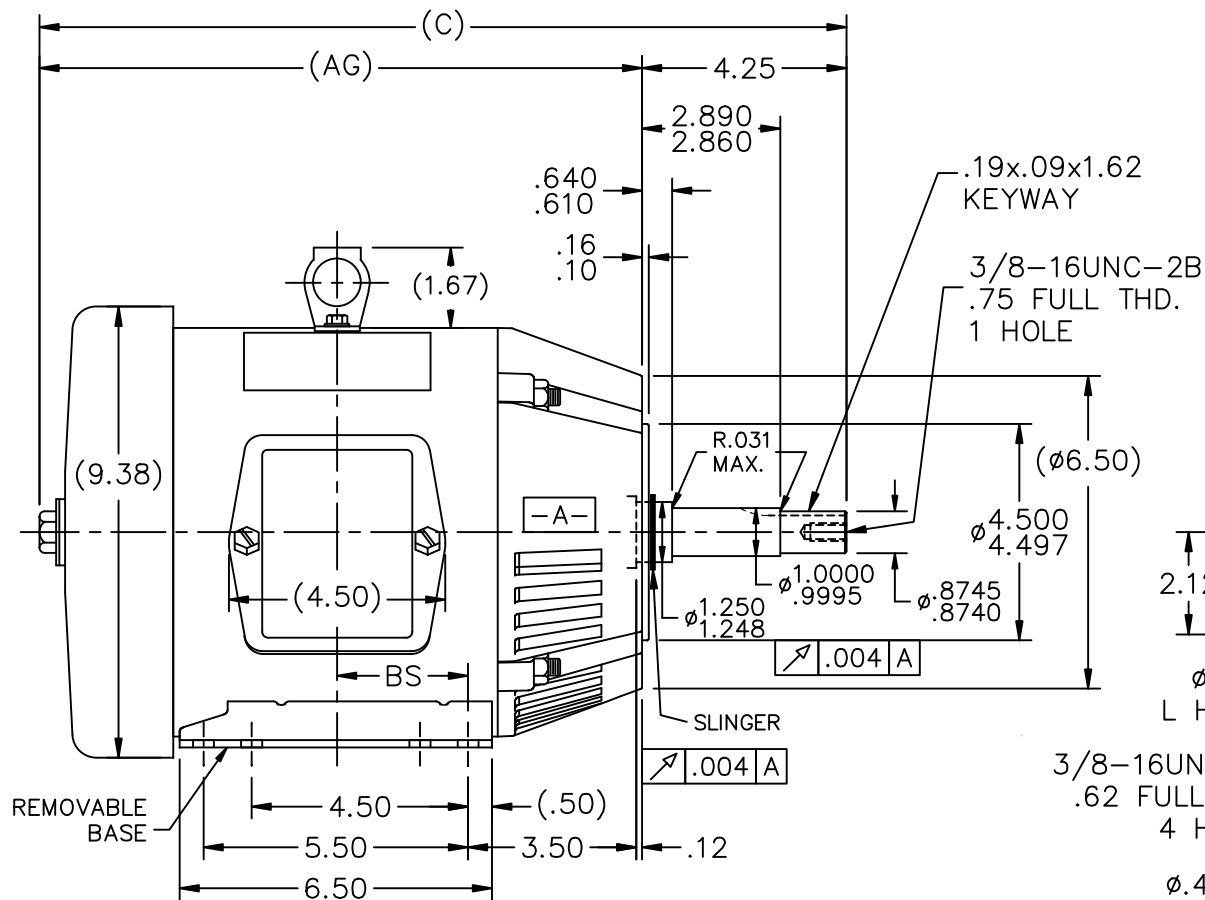
RegalRexnord

Nameplate Specifications

Output HP	5 Hp	Output KW	3.7 kW
Frequency	60 Hz	Voltage	575 V
Current	5.0 A	Speed	1750 rpm
Service Factor	1.15	Phase	3
Efficiency	89.5 %	Power Factor	82
Duty	Continuous	Insulation Class	F
Design Code	B	KVA Code	J
Frame	184JM	Enclosure	Drip Proof
Thermal Protection	No	Ambient Temperature	40 °C
Drive End Bearing Size	6307	Opp Drive End Bearing Size	6205
UL	Recognized	CSA	Y
CE	Y	IP Code	22
Number of Speeds	1		

Technical Specifications


Electrical Type	Squirrel Cage Inverter Rated	Starting Method	Wye Start Delta Run Or Inverter
Poles	4	Rotation	Reversible
Resistance Main	2.82 Ohms	Mounting	Bolt-on Base
Motor Orientation	Horizontal Or Shaft Down	Drive End Bearing	Ball
Opp Drive End Bearing	Ball	Frame Material	Rolled Steel
Shaft Type	JM	Overall Length	18.28 in
Frame Length	8.25 in	Shaft Diameter	0.875 in
Shaft Extension	4.25 in	Assembly/Box Mounting	F1/F2 Capable
Connection Drawing	A-EE7340	Outline Drawing	A-SS600024-825



575	182T	15.78	11.53	2.25	F1 OR F2
675	182/184T	16.78	12.53	2.75	F1 OR F2
725	182/184T	17.28	13.03	3.00	F1 ONLY
775	182/184T	17.78	13.53	3.25	F1 ONLY
825	182/184T	18.28	14.03	3.50	F1 ONLY
875	182/184T	18.78	14.53	3.75	F1 ONLY
DASH	FRAME	C	AG	BS	MOUNTING

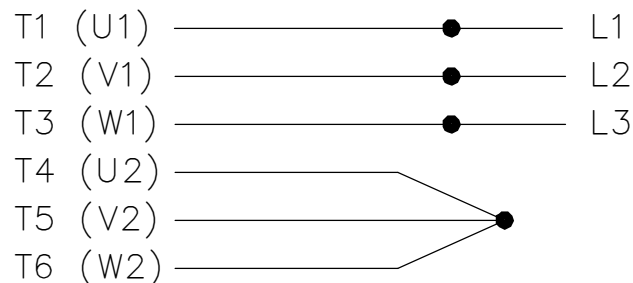
NOTES:

1. CONDUIT BOX CAN BE ROTATED IN 90° STEPS.
2. CONDUIT BOX CAN BE MOUNTED ON OPPOSITE SIDE BY REMOVING BRACKETS AND TURNING FRAME 180°.
3. NAMEPLATE TO BE READ FROM CONDUIT BOX SIDE OF MOTOR.

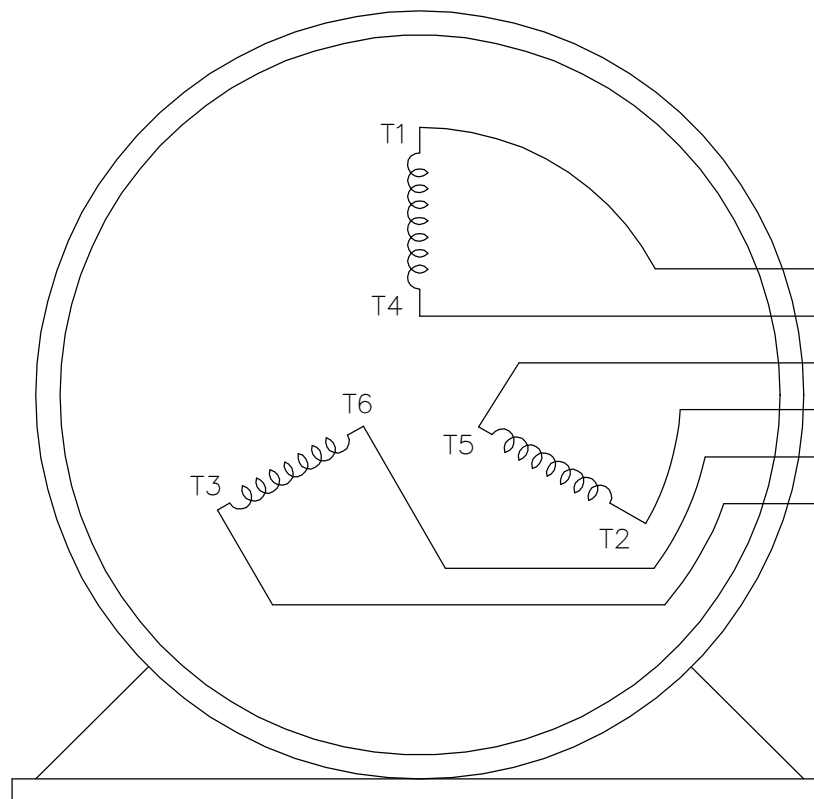
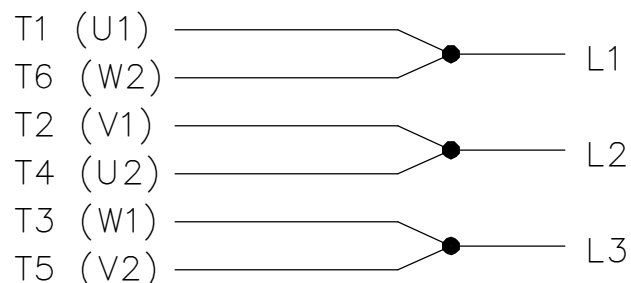
				TOLERANCES UNLESS SPECIFIED			DRAWN MSG 04-23-2010						
				DEC.	INCHES		CHK	DR	4/26/2010				
				.X	±.1			APPD	MJS	4/26/2010			
				.XX	±.03		TITLE OUTLINE – DRIP PROOF 180T FR. – BB – TS – C'FACE						
				.XXX	±.005								
				.XXXX	±.0005	MAT'L.	FMF MU95189						
NO.	REVISION		BY & DATE	CHK	ANG	±7'30"	FINISH				PREV		
THIS DRAWING IN DESIGN AND DETAIL IS OUR PROPERTY AND MUST NOT BE USED EXCEPT IN CONNECTION WITH OUR WORK ALL RIGHTS OF DESIGN AND INVENTION ARE RESERVED THIS IS AN ELECTRONICALLY GENERATED DOCUMENT – DO NOT SCALE THIS PRINT				RFP		CAD FILE SS600024				SIZE	DRAWING NO. PAGE OF		REV.
				DIST						A	SS600024		

THREE PHASE
WYE START DELTA RUN

START



RUN



VIEW OF TERMINAL END

T1 (U1)
T4 (U2)
T5 (V2)
T2 (V1)
T6 (W2)
T3 (W1)

NOTE:
IEC LEAD MARKINGS ARE NOTED
IN PARANTHESES

DRAWING REVISION F	REVISION BY RTT	REV DATE/© DATE 05-29-2019	TOLERANCES (EXCEPT AS NOTED): DEC. INCH mm ANGLE .X ±0.1 [±3] ±7° 30" .XX ±0.02 [±0.5] .XXX ±0.005 [±0.13] .XXXX ±0.0005 [±0.013] REMOVE BURRS & BREAK SHARP EDGES: .003/.015 [.08/.38] X 45 ° CORNER FILLETS: R.02 [.5] MACHINED SURFACES: 200/ 5.1 INCH mm mm DIMENSIONS IN [BRACKETS] ARE FOR REFERENCE ONLY	DRAWN BY LZ	REGAL® Regal Beloit America, Inc.		
ECO ECO-0167538	APPROVED BY JWA	DATE 05-29-2019		DATE 01-06-1994	DESCRIPTION CONNECTION DIAGRAM 3<MOD-DIAM> - WYE START DELTA RUN		
ECO DESCRIPTION UPDATED TITLE BLOCK				APPROVED BY GK			
COPYRIGHT (PER REVISION DATE) REGAL BELOIT AMERICA, INC. ALL RIGHTS RESERVED. PROPRIETARY AND CONFIDENTIAL INFORMATION - THIS DOCUMENT IS THE PROPERTY OF REGAL BELOIT AMERICA, INC. ("OWNER") AND CONTAINS OWNER'S PROPRIETARY INFORMATION. ANY PERSON, CORPORATION OR OTHER FIRM RECEIVING IT IS DEEMED, BY RECEIVING IT, TO AGREE THAT IT, AND/OR ANY PART OF IT, SHALL NOT BE DISCLOSED TO ANY PERSON, CORPORATION OR OTHER ENTITY, DUPLICATED, AND/OR USED, EXCEPT AS EXPRESSLY APPROVED IN WRITING IN ADVANCE BY OWNER. THIS DOCUMENT SHALL BE RETURNED TO OWNER UPON REQUEST. IT MAY BE SUBJECT TO CERTAIN RESTRICTIONS UNDER APPLICABLE EXPORT CONTROL LAWS AND REGULATIONS.				DATE 01-18-1994	MATERIAL PROCESS/FINISH		
				REFERENCE			
			THIRD ANGLE PROJECTION	SIZE A	DRAWING NUMBER EE7340	SHEET 1 OF 1	

CERTIFICATION DATA SHEET

Model#: 184TTDR16022 AA
 CONN. DIAGRAM: A-EE7340
 OUTLINE: A-SS600024-825

WINDING#: K1844214 NONE 8
 ASSEMBLY: F1/F2 CAPABLE

TYPICAL MOTOR PERFORMANCE DATA

HP	KW	SYNC. RPM	F.L. RPM	FRAME	ENCLOSURE	KVA CODE	DESIGN
5	3.7	1800	1750	184JM	DP	J	B

PH	Hz	VOLTS	FL AMPS	START TYPE	DUTY	INSL	S.F	AMB°C	ELEVATION
3	60	575	5	Y START D RUN OR INV	CONTINUOU S	F3	1.15	40	3300

FULL LOAD EFF: 89.5	3/4 LOAD EFF: 90.2	1/2 LOAD EFF: 89.5	GTD. EFF	ELEC. TYPE	NO LOAD AMPS
FULL LOAD PF: 82	3/4 LOAD PF: 77	1/2 LOAD PF: 66	87.5	SQ CAGE INV RATED	2.2

F.L. TORQUE	LOCKED ROTOR AMPS	L.R. TORQUE	B.D. TORQUE	F.L. RISE°C
15 LB-FT	36.8	31.5 LB-FT 210	50 LB-FT 333	50

SOUND PRESSURE @ 3 FT.	SOUND POWER	ROTOR WK^2	MAX. WK^2	SAFE STALL TIME	STARTS /HOUR	APPROX. MOTOR WGT
63 dBA	73 dBA	0.45 LB-FT^2	30 LB-FT^2	20 SEC.	2	100 LBS.

*** SUPPLEMENTAL INFORMATION ***

DE BRACKET TYPE	ODE BRACKET TYPE	MOUNT TYPE	ORIENTATION	SEVERE DUTY	HAZARDOUS LOCATION	DRIP COVER	SCREENS	PAINT
C-FACE	STANDARD	BOLT-ON	HORIZONTAL OR SHAFT DOWN	FALSE	NONE	PROVISIONS ONLY	NONE	BLUE (ENAMEL)

BEARINGS		GREASE	SHAFT TYPE	SPECIAL DE	SPECIAL ODE	SHAFT MATERIAL	FRAME MATERIAL
DE	OPE						
BALL	BALL						
6307	6205	POLYREX EM	JM	NONE	NONE	1144 STRESSPROOF (C-223)	ROLLED STEEL

THERMO-PROTECTORS				THERMISTORS	CONTROL	SPACE /n HEATERS
THERMOSTATS	PROTECTORS	WDG RTDs	BRG RTDs			
NONE	NOT	NONE	NONE	NONE	FALSE	NONE VOLTS

If Inverter equals NONE, contact factory for further information

*
N
O
T
E
S
*

INVERTER TORQUE: CONSTANT 2:1		
INV. HP SPEED RANGE: NONE		
ENCODER: NONE		
NONE NONE		
NONE NONE PPR		
BRAKE: NONE NONE		
NONE P/N NONE		
NONE NONE		
NONE FT-LB	NONE V	NONE Hz

DATE: 06/28/2017 06:33:11 AM
 FORM 3531 REV.3 02/07/99
 ** Subject to change without notice.

Data Sheet

Date: 19-06-2017

Customer:

Attention:

Submitted by: FAREEDA DUDEKULA



184TTDR16022

Submittal

Data @ 575 V

Motor Load Data

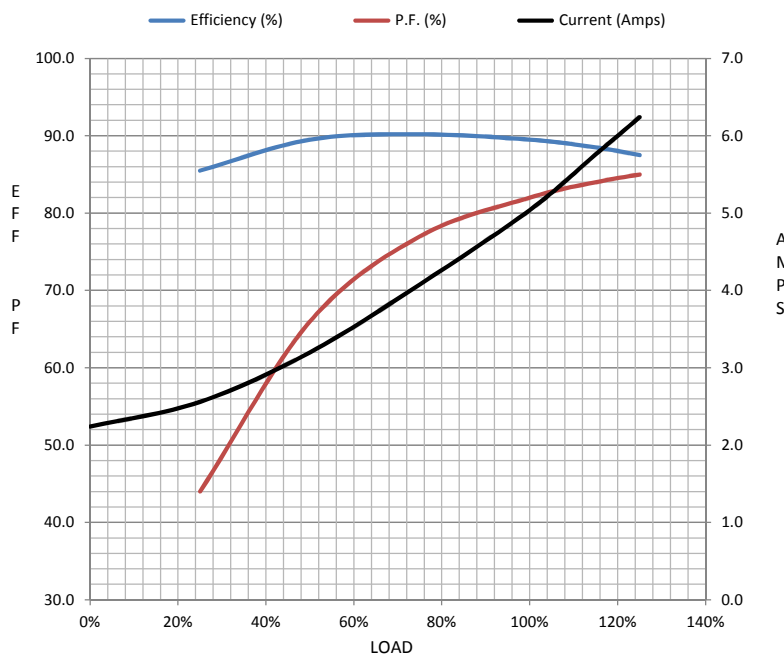
Load	0%	25%	50%	75%	100%	115%	125%	LR	
Current (Amps)	2.24	2.56	3.2	4.1	5.0	5.8	6.2	36.8	
Torque (ft-lb)	0.00	3.7	7.4	11.2	15.0	17.5	19.0	31.5	
RPM	1800	1790	1775	1765	1750	1,745	1735	0	
Efficiency (%)		85.5	89.5	90.2	89.5	88.5	87.5		
P.F. (%)	6.5	44.0	66.0	77.0	82.0	84.0	85.0	50.0	

Motor Speed Data

	LR	Pull-Up	BD	Rated	Idle
Speed (RPM)	0	750	1500	1750	1800
Current (Amps)	36.8	34.4	20.8	5.0	2.24
Torque (ft-lb)	31.5	30.0	50.0	15.0	0.00

Information Block

HP	5.0			
Sync. RPM	1800			
Frame	184			
Enclosure	DP			
Construction	TDR			
Voltage	575 V			
Frequency	60 Hz			
Design	B			
LR Code letter	J			
Service Factor	1.15			
Temp Rise @ FL	50 ° C			
Duty	CONT			
Ambient	40 ° C			
Elevation	1,000 feet			
Rotor/Shaft wk²	0.45 Lb-Ft²			
Ref Wdg	K1844214 NONE			
Sound Pressure @ 1M	63 dBA			
VFD Rating	CONSTANT 2:1			
Outline Dwg	A-SS600024-825			
Conn. Diag	A-EE7340			
Additional Specifications:				
0				
365THFS8036				
EQUIV CKT (OHMS / PHASE)				
R1	R2	X1	X2	Xm
2.4140	1.7220	5.7420	8.0140	146.4380



Speed - Torque Curve

