

PRODUCT INFORMATION PACKET

marathon®
Motors

Model No: 184TTDBD6428

Catalog No: GT6030

Globetrotter® General Purpose Motor, 5 & 3 HP, 3 Ph, 60 & 50 Hz, 208-230/460 & 190/380 V,
1800 & 1500 RPM, 184T Frame, DP



Regal and Marathon are trademarks of Regal Rexnord Corporation or one of its affiliated companies.

©2023 Regal Rexnord Corporation, All Rights Reserved. MC017097E

RegalRexnord

Nameplate Specifications

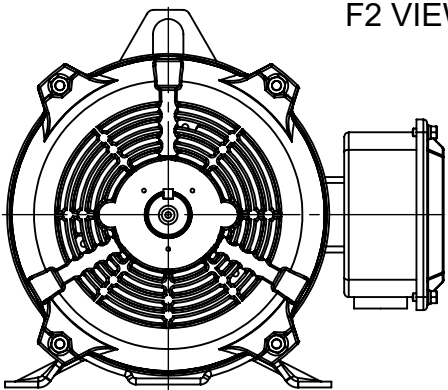
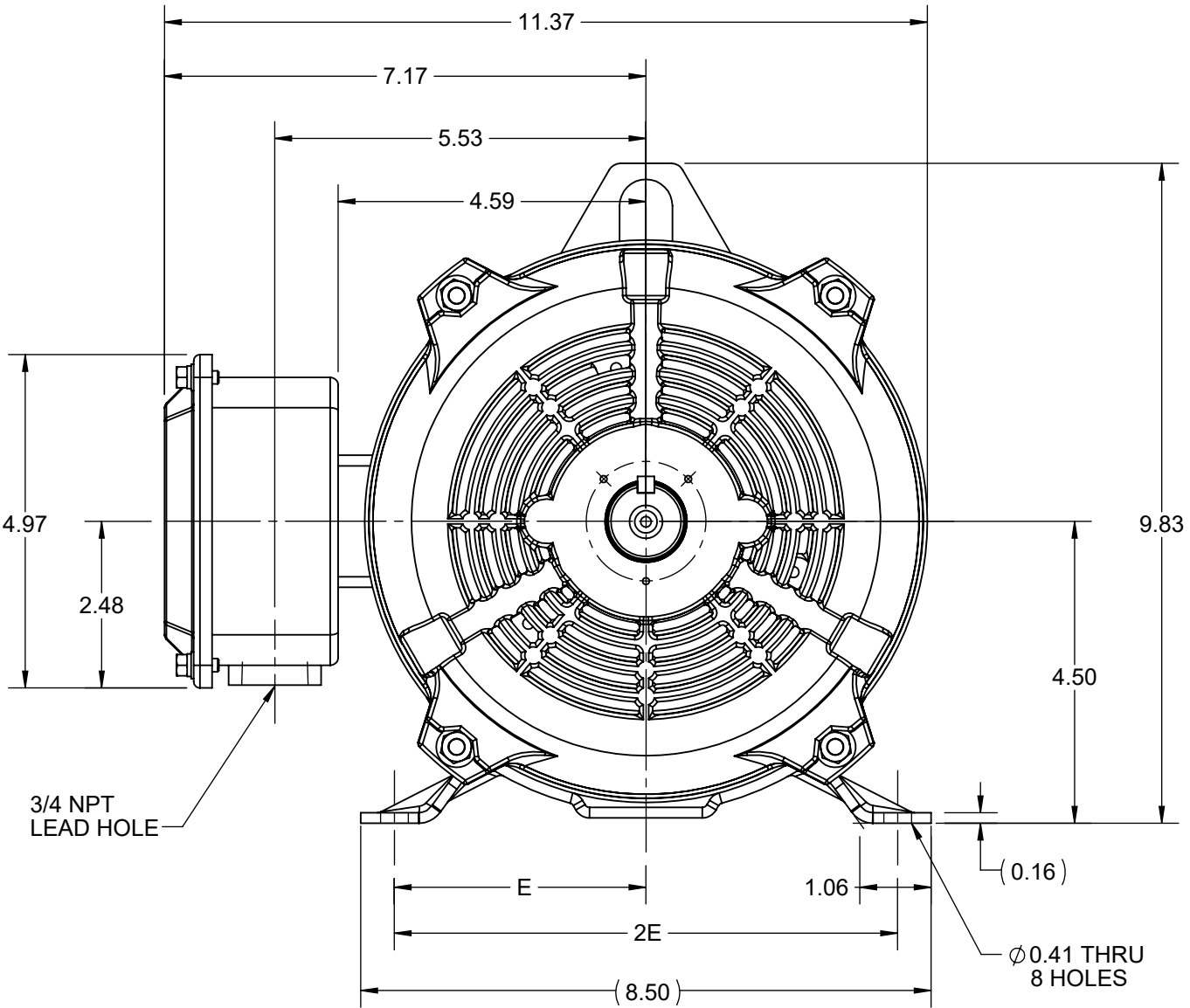
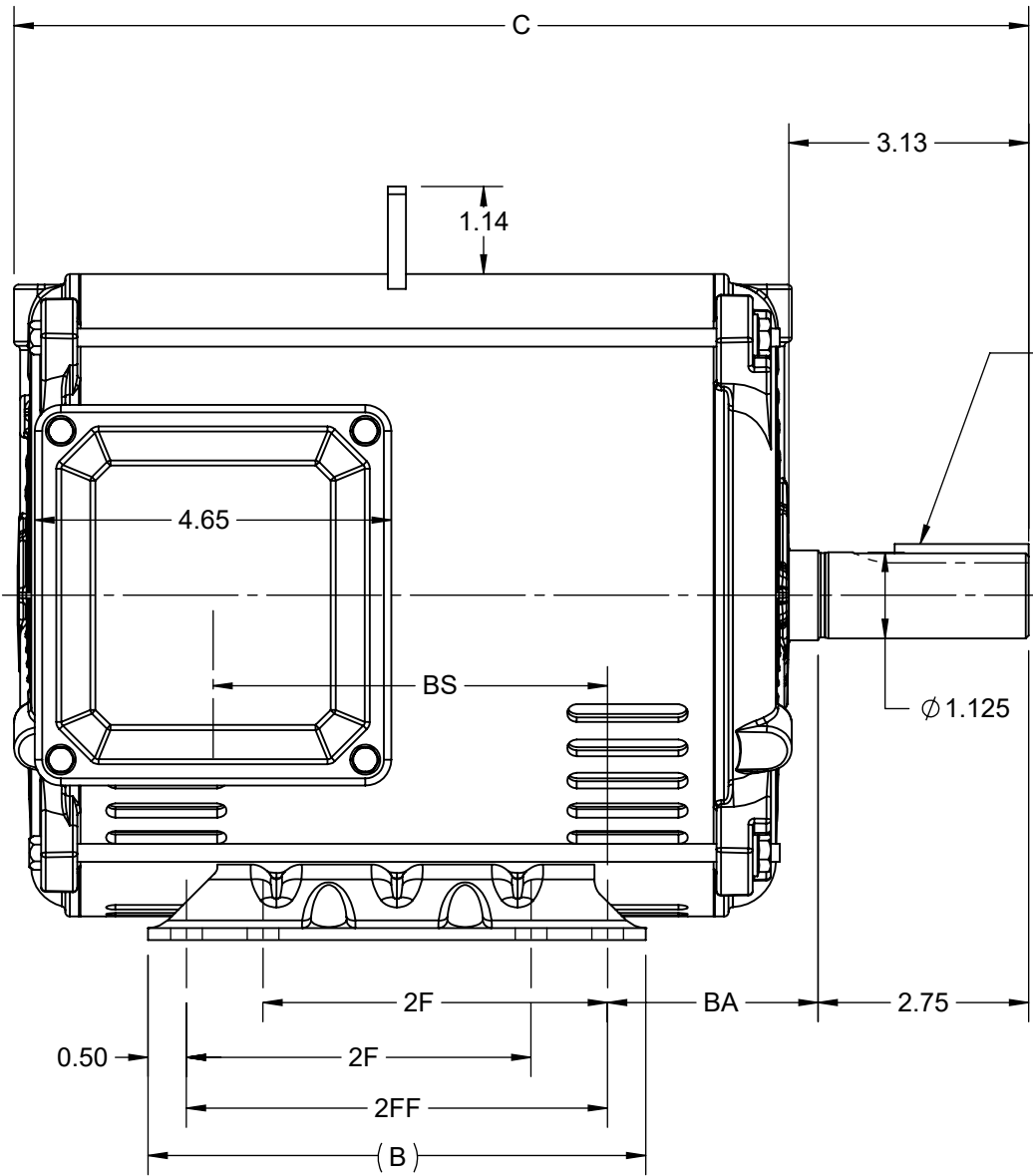
| | | | |
|------------------------|--------------------------|----------------------------|-------------------------|
| Phase | 3 | Output HP | 5 & 3 Hp |
| Output KW | 3.7 & 2.2 kW | Voltage | 208-230/460 & 190/380 V |
| Speed | 1765 & 1475 rpm | Service Factor | 1.15 & 1.15 |
| Frame | 184T | Enclosure | Drip Proof |
| Thermal Protection | Thermostat | Efficiency | 89.5 & 88.5 % |
| Ambient Temperature | 40 °C | Frequency | 60 & 50 Hz |
| Current | 14-13.2/6.6 & 10.4/5.2 A | Power Factor | 80 |
| Duty | Continuous | Insulation Class | F |
| Design Code | A | KVA Code | K |
| Drive End Bearing Size | 6206 | Opp Drive End Bearing Size | 6203 |
| UL | Recognized | CSA | Y |
| CE | Y | IP Code | 22 |
| Number of Speeds | 1 | | |

Technical Specifications

| | | | |
|-----------------------|------------------------------|--------------------|----------------------------|
| Electrical Type | Squirrel Cage Inverter Rated | Starting Method | Line Or Inverter |
| Poles | 4 | Rotation | Reversible |
| Resistance Main | 2.72 Ohms | Mounting | Rigid Base |
| Motor Orientation | Horizontal | Drive End Bearing | Ball |
| Opp Drive End Bearing | Ball | Frame Material | Rolled Steel |
| Shaft Type | T | Shaft Diameter | 1.125 in |
| Assembly/Box Mounting | F1/F2 CAPABLE | Inverter Load | CONSTANT 4:1/VARIABLE 10:1 |
| Outline Drawing | SS600198-200 | Connection Drawing | EE7308T |


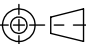
This is an uncontrolled document once printed or downloaded and is subject to change without notice. Date Created:06/23/2023

| 4 | | | | 3 | | | | 2 | | | 1 |
|----------|------|-------|------|------|------|------|------|------|----------|-------|---|
| DASH NO. | B | C | E | 2E | 2F | 2FF | BA | BS | MOUNTING | FRAME | |
| 100 | 6.50 | 12.25 | 3.75 | 7.50 | 4.50 | 5.50 | 2.75 | 4.15 | F1 OR F2 | 182T | |
| 200 | | 13.25 | | | | | | 5.15 | | 184T | |



| | | |
|--|--------------------|-------------------------------|
| DRAWING REVISION F | REVISION BY VS | REV DATE/© DATE 24-06-2021 |
| ECO CR-0003090 | APPROVED BY GNK | DATE 24-06-2021 |
| ECO DESCRIPTION VIEWS UPDATED COPYRIGHT (PER REVISION DATE) REGAL BELOIT AMERICA, INC. ALL RIGHTS RESERVED. PROPRIETARY AND CONFIDENTIAL INFORMATION - THIS DOCUMENT IS THE PROPERTY OF REGAL BELOIT AMERICA, INC. ("OWNER") AND CONTAINS OWNER'S PROPRIETARY INFORMATION. ANY PERSON, CORPORATION OR OTHER FIRM RECEIVING IT IS DEEMED, BY RECEIVING IT, TO AGREE THAT IT, AND/OR ANY PART OF IT, SHALL NOT BE DISCLOSED TO ANY PERSON, CORPORATION OR OTHER ENTITY, DUPLICATED, AND/OR USED, EXCEPT AS EXPRESSLY APPROVED IN WRITING IN ADVANCE BY OWNER. THIS DOCUMENT SHALL BE RETURNED TO OWNER UPON REQUEST. IT MAY BE SUBJECT TO CERTAIN RESTRICTIONS UNDER APPLICABLE EXPORT CONTROL LAWS AND REGULATIONS. | | |

PRIMARY DIMENSIONS ARE INCH
mm DIMENSIONS IN [BRACKETS]
ARE FOR REFERENCE ONLY

| | | | |
|--|-----------|---|----------------|
| DRAWN BY PRIYA | | <div> Regal Beloit America, Inc.</div> | |
| DATE 12/03/2018 | | | |
| APPROVED BY SBD | | DESCRIPTION <div>OUTLINE</div> 182/184T FR -NEMA-ODP RS | |
| DATE 12/03/2018 | | | |
| REFERENCE | | MATERIAL | PROCESS/FINISH |
| THIRD ANGLE PROJECTION  | SIZE B | DRAWING NUMBER SS600198 | |
| | | SHEET 1 OF 1 | |

HIGH VOLTAGE

THREE PHASE
DUAL VOLTAGE MOTOR

NOTE FOR FACTORY USE ONLY:
TO SURGE TEST FOR COMMON CONNECT:
HIGH VOLT: CONNECT P1 TO T1
THEN P2 TO L1
LOW VOLT: CONNECT P1 TO T1 & T7,
THEN P2 TO L1

LOW VOLTAGE



VIEW OF TERMINAL END

NOTE: LEAD'S COLOR CAN BE YELLOW OR WHITE FOR MT2 PLANT

| | | |
|-----------------------|-------------------|--------------------|
| DRAWING REVISION T | REVISION BY ZR | DATE 01-14-2019 |
| ECO ECO-0159915 | APPROVED BY DR | DATE 01-15-2019 |

ECO DESCRIPTION
ADDED TERMINAL CONNECTION DIAGRAM

COPYRIGHT REGAL BELOIT AMERICA, INC. ALL RIGHTS RESERVED.
PROPRIETARY AND CONFIDENTIAL INFORMATION - THIS DOCUMENT IS THE PROPERTY OF
REGAL BELOIT AMERICA, INC. ("OWNER") AND CONTAINS OWNER'S PROPRIETARY
INFORMATION. ANY PERSON, CORPORATION OR OTHER FIRM RECEIVING IT IS DEEMED,
BY RECEIVING IT, TO AGREE THAT IT, AND/OR ANY PART OF IT, SHALL NOT BE DISCLOSED
TO ANY PERSON, CORPORATION OR OTHER ENTITY, DUPLICATED, AND/OR USED, EXCEPT
AS EXPRESSLY APPROVED IN WRITING IN ADVANCE BY OWNER. THIS DOCUMENT SHALL
BE RETURNED TO OWNER UPON REQUEST. IT MAY BE SUBJECT TO CERTAIN
RESTRICTIONS UNDER APPLICABLE EXPORT CONTROL LAWS AND REGULATIONS.

DRAWN BY
SMC

DATE
05-13-1992

APPROVED BY
TB

DATE
05-13-1992

REFERENCE
EE7308/EE7300

THIRD ANGLE
PROJECTION



Regal Beloit America, Inc.

DESCRIPTION

CONN DIAGRAM-INTERNAL
3 PHASE - DUAL VOLTAGE MOTOR

MATERIAL

PROCESS/FINISH

SIZE
A

DRAWING NUMBER

EE7308T

SHEET
1 OF 1



P.O. BOX 8003
WAUSAU, WI 54401-8003
PH. 715-675-3311

DATA VOLTS: 460

CERTIFICATION DATA SHEET

CUSTOMER:**ORDER #:****CONN. DIAGRAM:****OUTLINE:****WINDING:****SPEED:**

EE7308T

SS600198-200

HA31124029

NONE

2

CUSTOMER P.O. #:**REFERENCE MODEL #:****CAT #:****CUSTOMER PART #:****MOUNTING:**

184TTDBD6428

GT6030

F1/F2 CAPABLE

TYPICAL MOTOR PERFORMANCE DATA

| HP | KW | SYNC RPM | FL RPM | FRAME | ENCLOSURE | TYPE | KVA CODE | DESIGN |
|----|-----|----------|--------|-------|-----------|------|----------|--------|
| 5 | 3.7 | 1800 | 1765 | 184T | DP | TDB | K | A |

| PH | HZ | VOLTS | AMPS | START TYPE | DUTY | INSL | S.F. | AMB | ELEV. |
|----|-------|---------------------|---------------------|------------------|------|------|------|-----|-------|
| 3 | 60/50 | 208-230/460#190/380 | 7-13.2/6.6&10.4/5.2 | LINE OR INVERTER | CONT | F | 1.15 | 40 | 3300 |

| F.L. EFF | 89.5 | 3/4 LD EFF | 89.5 | 1/2 LD EFF | 88.5 | GTD EFF | 88.5 | ELECT. TYPE | SQ CAGE INV RATED |
|----------|------|------------|------|------------|------|---------|------|-------------|-------------------|
| F.L. PF | 80.0 | 3/4 LD PF | 72.0 | 1/2 LD PF | 59.0 | | | | |

| F.L. TORQUE | LR AMPS @ 460 V | L.R. TORQUE | B.D. TORQUE | F.L. RISE (°C) |
|-------------|-----------------|-------------|-------------|----------------|
| 14.9 LB-FT | 55.0 | 36.0 LB-FT | 56.0 LB-FT | 55 |

| SOUND PRESSURE @ 3 FT. | SOUND | POWER | ROTOR WK ² | MAX. LOAD WK ² | SAFE STALL TIME | STARTS/HOUR | APPROX. | MOTOR WGT |
|------------------------|--------|-------|-------------------------|---------------------------|-----------------|-------------|---------|-----------|
| 67 dBA | 76 dBA | | 0.50 LB-FT ² | 30 LB-FT ² | 20 SEC. | 2 | 84 | LB. |

*** SUPPLEMENTAL INFORMATION ***

| DE BRACKET TYPE | ODE BRACKET TYPE | MOUNT TYPE | MOTOR ORIENTATION | SEVERE DUTY | HAZARDOUS LOCATION | DRIP COVER | SCREENS | PAINT |
|-----------------|------------------|------------|-------------------|-------------|--------------------|------------|---------|---------------|
| STANDARD | STANDARD | RIGID | HORIZONTAL | NO | NONE | YES | NONE | BLUE (ENAMEL) |

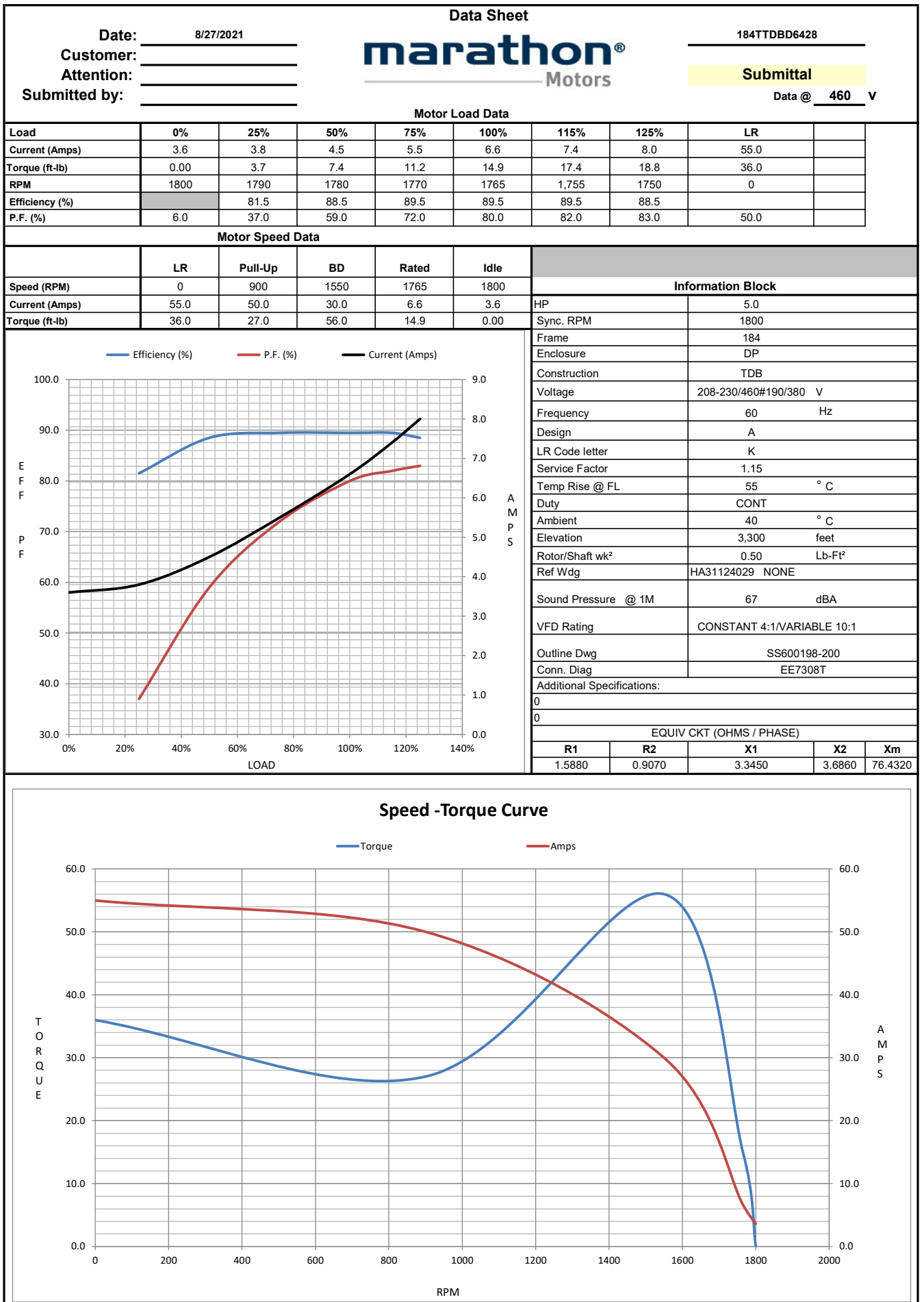
| BEARINGS | GREASE | SHAFT TYPE | SPECIAL DE | SPECIAL ODE | SHAFT | MATERIAL | FRAME MATERIAL |
|-----------------|------------------|------------|------------|-------------|-------|-------------------------|----------------|
| DE BALL 6206 | ODE BALL 6203 | POLYREX EM | T | NONE | NONE | 1045 HOT ROLLED (C-204) | ROLLED STEEL |

| THERMOSTATS | PROTECTORS | WDG RTD's | BRG RTD's | THERMISTORS | CONTROL | SPACE | HEATERS |
|--------------|------------|-----------|-----------|-------------|---------|-------|---------|
| TSTATS (N/C) | NOT | NONE | NONE | NONE | FALSE | | NA |

| R1 (ohms/ph) | R2 (ohms/ph) | X1 (ohms/ph) | X2 (ohms/ph) | Xm (ohms/ph) | VIBRATION (in/sec) | FLOAT |
|--------------|--------------|--------------|--------------|--------------|--------------------|-------|
| 1.588 | 0.907 | 3.345 | 3.686 | 76.432 | 0.150 | ODE |

| | | | | |
|---------------------------------|--|--|--|--|
| * N O T E s * | INVERTER TORQUE: CONSTANT 4:1/VARIABLE 10:1 INV. HP SPEED RANGE: NONE | | | |
| | ENCODER: NONE | | | |
| | NONE | | | |
| | NONE PPR | | | |
| | BRAKE: NONE | | | |

| | | | |
|---------------------------|-----------|---|-----|
| PREPARED BY: | 8/27/2021 | FT-LB: NA | HZ: |
| DATE: | | VOLTAGE: NONE | |
| FORM: 3531 REV. 4 2/27/06 | | UL: V - LIME-INS.CONST UL REC.W/OVERHEAT PRT DEVICE | |



EC Declaration of Conformity

The undersigned representing
the manufacturer:

Regal Beloit America
100 East Randolph St.
Wausau, WI 54401

and the authorized representative
established within the Community:

Marathon Electric UK
6F Thistleton Road Ind. Estate
Market Overton
Oakham, Rutland LE15 7PP UK

are committed to providing customers with products that comply with applicable regulations and international protocols to which they are subject, including the requirements of the European Parliament Directive on the Harmonization of the laws relating to electrical equipment designed for use within certain voltage limits (2014/35/EU).

Regal Beloit America declares that the following product(s), to which this declaration relates, are in conformity with the relevant sections of the EC standards listed below.

This statement supersedes any statements previously issued pertaining to the product(s) listed below and is subject to change without notice.

Model No : 184TTDBD6428

(Model No. may contain prefix and/or suffix characters)

Catalog No : GT6030

Rework No : N/A

Directives :

Low Voltage Directive 2014/35/EU

Harmonized Standards Used :

EN 60034-1: 2010 (IEC 60034-1: 2010)

EN 60034-5: 2001/A1:2007 (IEC 60034-5: 2000/A1:2006)

Authorized Representative:



Michael A. Logsdon
Vice President, Technology

Authorized Representative in the Community:



Julian Clark
Marketing Engineer

Created on 09/01/2022

CE 22