

PRODUCT INFORMATION PACKET

marathon®
Motors

Model No: 184TTDB6037

Catalog No: GT2413

Globetrotter® Close-Coupled Pump Motor, 5 & 3 HP, 3 Ph, 60 & 50 Hz, 230/460 & 190/380 V,
1800 & 1500 RPM, 184JP Frame, DP



Regal and Marathon are trademarks of Regal Rexnord Corporation or one of its affiliated companies.

©2023 Regal Rexnord Corporation, All Rights Reserved. MC017097E

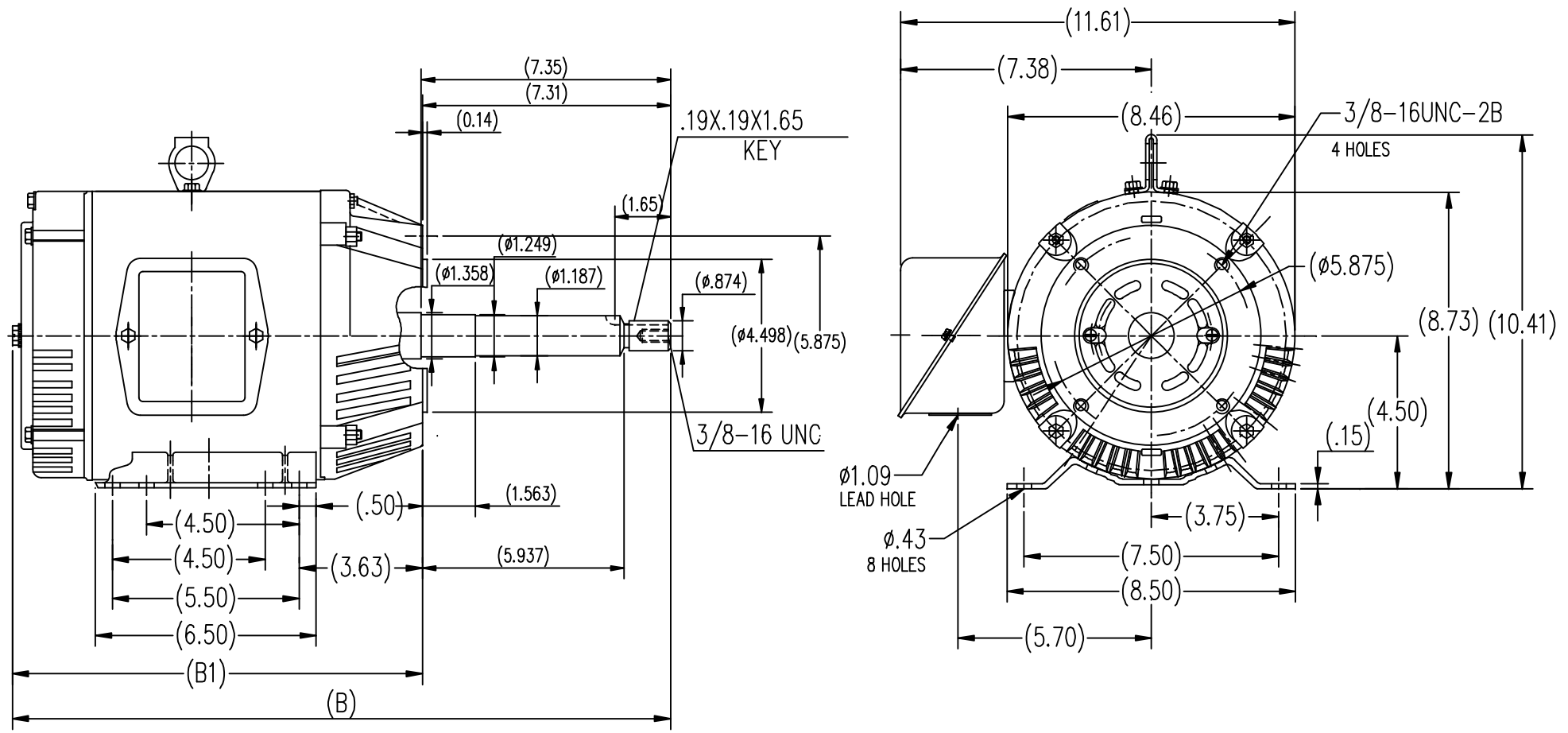
RegalRexnord

Nameplate Specifications


Phase	3	Output HP	5 & 3 Hp
Output KW	3.7 & 2.2 kW	Voltage	230/460 & 190/380 V
Speed	1740 & 1455 rpm	Service Factor	1.15 & 1.15
Frame	184JP	Enclosure	Drip Proof
Thermal Protection	No Protection	Efficiency	89.5 & 89.5 %
Ambient Temperature	40 °C	Frequency	60 & 50 Hz
Current	12.4/6.2 & 9.6/4.8 A	Power Factor	85
Duty	Continuous	Insulation Class	F
Design Code	B	KVA Code	J
Drive End Bearing Size	6307	Opp Drive End Bearing Size	6205
UL	Recognized	CSA	Y
CE	Y	IP Code	12
Number of Speeds	1		

Technical Specifications

Electrical Type	Squirrel Cage Inverter Rated	Starting Method	Line Or Inverter
Poles	4	Rotation	Reversible
Resistance Main	2.25 Ohms	Mounting	Rigid Base
Motor Orientation	Horizontal	Drive End Bearing	Ball
Opp Drive End Bearing	Ball	Frame Material	Rolled Steel
Shaft Type	JP	Overall Length	20.46 in
Shaft Diameter	0.875 in	Shaft Extension	7.35 in
Assembly/Box Mounting	F1 ONLY		
Connection Drawing	EE7308	Outline Drawing	SS620570-184T



182T	12.09	19.44
184T	13.11	20.46
FRAME	B1	B

			TOLERANCES UNLESS SPECIFIED		 REGAL-BELOIT CORPORATION	DRAWN ZXC 05-17-2012	
			DEC.	INCHES		CHK	
			.X	±.1		APPD	
			.XX	±.03		SCALE	1=4
			.XXX	±.005		REF	
			.XXXX	±.0005		FMF	HWADA
NO.	REVISION	BY & DATE	CHK	ANG	±1/2	FINISH	PREV
THIS DRAWING IN DESIGN AND DETAIL IS OUR PROPERTY AND MUST NOT BE USED EXCEPT IN CONNECTION WITH OUR WORK ALL RIGHTS OF DESIGN AND INVENTION ARE RESERVED THIS IS AN ELECTRONICALLY GENERATED DOCUMENT - DO NOT SCALE THIS PRINT			RFP	ANG	±1/2	FINISH	
			DIST				
			CAD FILE	SS620570	SIZE	DRAWING NO.	REV.
			B			SS620570	



				TOLERANCES UNLESS SPECIFIED		 Regal Beloit America, Inc.	DRAWN RM 11/20/1990				
5	CHG TO REGAL LOGO	SL 09/10/2015	AB	DEC.	INCHES		CHK ML 11/21/1990				
4	REVISED IEC NOTATIONS	MSG 11/15/2011	CMN	.X	±.1		APPD SAS 04/24/2003				
3	ADDED IEC NOTATIONS... (U1), (V1) ETC. MU95194	MSG 5/10/2010	MJS	.XX	±.02		SCALE 1=1				
2	ADDED THE OPTIONAL CORD CONNECTION MU46318	RDH 04/24/2003	DRS	.XXX	±.005	TITLE CONNECTION DIAGRAM 3Ø — DUAL VOLTAGE MOTOR	REF				
1	REDRAWN	RM 11/20/1990		.XXXX	±.0005		FMF				
NO.	REVISION	BY & DATE	CHK	ANG	±7°30"	FINISH	PREV				
THIS DRAWING IN DESIGN AND DETAIL IS OUR PROPERTY AND MUST NOT BE USED EXCEPT IN CONNECTION WITH OUR WORK ALL RIGHTS OF DESIGN AND INVENTION ARE RESERVED THIS IS AN ELECTRONICALLY GENERATED DOCUMENT — DO NOT SCALE THIS PRINT			RFP		CAD FILE ee7308		SIZE	DRAWING NO.	PAGE	OF	REV.
			DIST WP				A	EE7308			5

CERTIFICATION DATA SHEET

Model#: 184TTDB6037 AA

WINDING#: CHT18440008 NONE 1

CONN. DIAGRAM: EE7308

ASSEMBLY: F1/F2 CAPABLE

OUTLINE: SS620570

TYPICAL MOTOR PERFORMANCE DATA

HP	KW	SYNC. RPM	F.L. RPM	FRAME	ENCLOSURE	KVA CODE	DESIGN
5&3	3.70&2.24	1800	1755&1468	184JP	DP	K	B

PH	Hz	VOLTS	FL AMPS	START TYPE	DUTY	INSL	S.F	AMB°C	ELEVATION
3	60/50	230/460#190/ 380	12.8/6.4&9.6/4 .8	LINE OR INVERTER	CONTINUOU S	F7	1.15/1.15	40	3300

FULL LOAD EFF: 89.5&89.5	3/4 LOAD EFF: 90.2	1/2 LOAD EFF: 89.5	GTD. EFF	ELEC. TYPE	NO LOAD AMPS
FULL LOAD PF: 82&78	3/4 LOAD PF: 77	1/2 LOAD PF: 66	88.5	SQ CAGE INV RATED	5.6 / 2.8

F.L. TORQUE	LOCKED ROTOR AMPS	L.R. TORQUE	B.D. TORQUE	F.L. RISE°C
15.1 LB-FT	92 / 46	39 LB-FT 258	52 LB-FT 344	50

SOUND PRESSURE @ 3 FT.	SOUND POWER	ROTOR WK^2	MAX. WK^2	SAFE STALL TIME	STARTS /HOUR	APPROX. MOTOR WGT
67 dBA	77 dBA	0.5 LB-FT^2	30 LB-FT^2	20 SEC.	2	110 LBS.

*** SUPPLEMENTAL INFORMATION ***

DE BRACKET TYPE	ODE BRACKET TYPE	MOUNT TYPE	ORIENTATION	SEVERE DUTY	HAZARDOUS LOCATION	DRIP COVER	SCREENS	PAINT
C-FACE	STANDARD	RIGID	HORIZONTAL	FALSE	NONE	FALSE	NONE	BLUE (ENAMEL)

BEARINGS		GREASE	SHAFT TYPE	SPECIAL DE	SPECIAL ODE	SHAFT MATERIAL	FRAME MATERIAL
DE	OPE						
BALL	BALL						
6307	6205	POLYREX EM	JP	NONE	NONE	1045 HOT ROLLED (C-204)	ROLLED STEEL

THERMO-PROTECTORS				THERMISTORS	CONTROL	SPACE /n HEATERS
THERMOSTATS	PROTECTORS	WDG RTDs	BRG RTDs			
NONE	NOT	NONE	NONE	NONE	FALSE	NONE VOLTS

If Inverter equals NONE, contact factory for further
information

* N O T E S *	INVERTER TORQUE: VARIABLE 10:1					
	INV. HP SPEED RANGE: NONE					
	ENCODER: NONE					
	NONE NONE NONE NONE PPR					
	BRAKE: NONE NONE					
	NONE P/N NONE					
	NONE NONE					
	NONE FT-LB NONE V NONE Hz					

DATE: 06/28/2017 06:29:53 AM

FORM 3531 REV.3 02/07/99

** Subject to change without notice.

Data Sheet

Date: 6/20/2017

Customer: _____

Attention: _____

Submitted by: FAREEDA DUDEKULA



184TTDB6037

Submittal

Data @ 460 V

Motor Load Data

Load	0%	25%	50%	75%	100%	115%	125%	LR	
Current (Amps)	2.80	3.2	4.0	5.2	6.2	6.9	7.8	46.0	
Torque (ft-lb)	0.00	3.7	7.4	11.2	15.1	17.4	19.0	39.0	
RPM	1800	1790	1780	1755	1740	1,732	1725	0	
Efficiency (%)		86.5	89.5	90.2	89.5	88.5	87.5		
P.F. (%)	6.0	45.0	66.0	77.0	85.0	86.0	87.0	46.0	

Motor Speed Data

	LR	Pull-Up	BD	Rated	Idle	Information Block																																
Speed (RPM)	0	750	1450	1740	1800	HP	5.0																															
Current (Amps)	46.0	53.0	32.0	6.2	2.80	Sync. RPM	1800																															
Torque (ft-lb)	39.0	38.0	52.0	15.1	0.00	Frame	184																															
<div><div>— Efficiency (%) — P.F. (%) — Current (Amps)</div><table><caption>Graph Data Points (Estimated)</caption><thead><tr><th>Load (%)</th><th>Efficiency (%)</th><th>P.F. (%)</th><th>Current (Amps)</th></tr></thead><tbody><tr><td>25</td><td>86</td><td>1.8</td><td>3.0</td></tr><tr><td>40</td><td>88</td><td>3.5</td><td>3.5</td></tr><tr><td>60</td><td>90</td><td>5.5</td><td>4.5</td></tr><tr><td>80</td><td>90</td><td>6.8</td><td>5.5</td></tr><tr><td>100</td><td>89</td><td>7.2</td><td>6.5</td></tr><tr><td>125</td><td>87</td><td>7.5</td><td>8.0</td></tr></tbody></table></div>						Load (%)	Efficiency (%)	P.F. (%)	Current (Amps)	25	86	1.8	3.0	40	88	3.5	3.5	60	90	5.5	4.5	80	90	6.8	5.5	100	89	7.2	6.5	125	87	7.5	8.0	Enclosure	DP			
						Load (%)	Efficiency (%)	P.F. (%)	Current (Amps)																													
						25	86	1.8	3.0																													
						40	88	3.5	3.5																													
						60	90	5.5	4.5																													
						80	90	6.8	5.5																													
						100	89	7.2	6.5																													
						125	87	7.5	8.0																													
						Construction	TDB																															
						Voltage	30/460#190/381V																															
						Frequency	60 Hz																															
						Design	B																															
						LR Code letter	J																															
						Service Factor	1.15																															
						Temp Rise @ FL	50 °C																															
						Duty	CONT																															
						Ambient	40 °C																															
Elevation	1,000 feet																																					
Rotor/Shaft wk²	0.50 Lb-Ft²																																					
Ref Wdg	CHT18440008 NONE																																					
Sound Pressure @ 1M	67 dBA																																					
VFD Rating	VARIABLE 10:1																																					
Outline Dwg	SS620570																																					
Conn. Diag	EE7308																																					
Additional Specifications:																																						
0																																						
0																																						
EQUIV CKT (OHMS / PHASE)																																						
R1		R2		X1		X2		Xm																														
1.3040		1.5310		3.9410		4.1160		108.5810																														

Speed -Torque Curve

