

PRODUCT INFORMATION PACKET

marathon®
Motors

Model No: 184TTDB6013

Catalog No: GT2515

Globetrotter® Close-Coupled Pump Motor, 7.50 HP, 3 Ph, 60 Hz, 575 V, 3600 RPM, 184JP Frame, DP



Regal and Marathon are trademarks of Regal Rexnord Corporation or one of its affiliated companies.

©2023 Regal Rexnord Corporation, All Rights Reserved. MC017097E

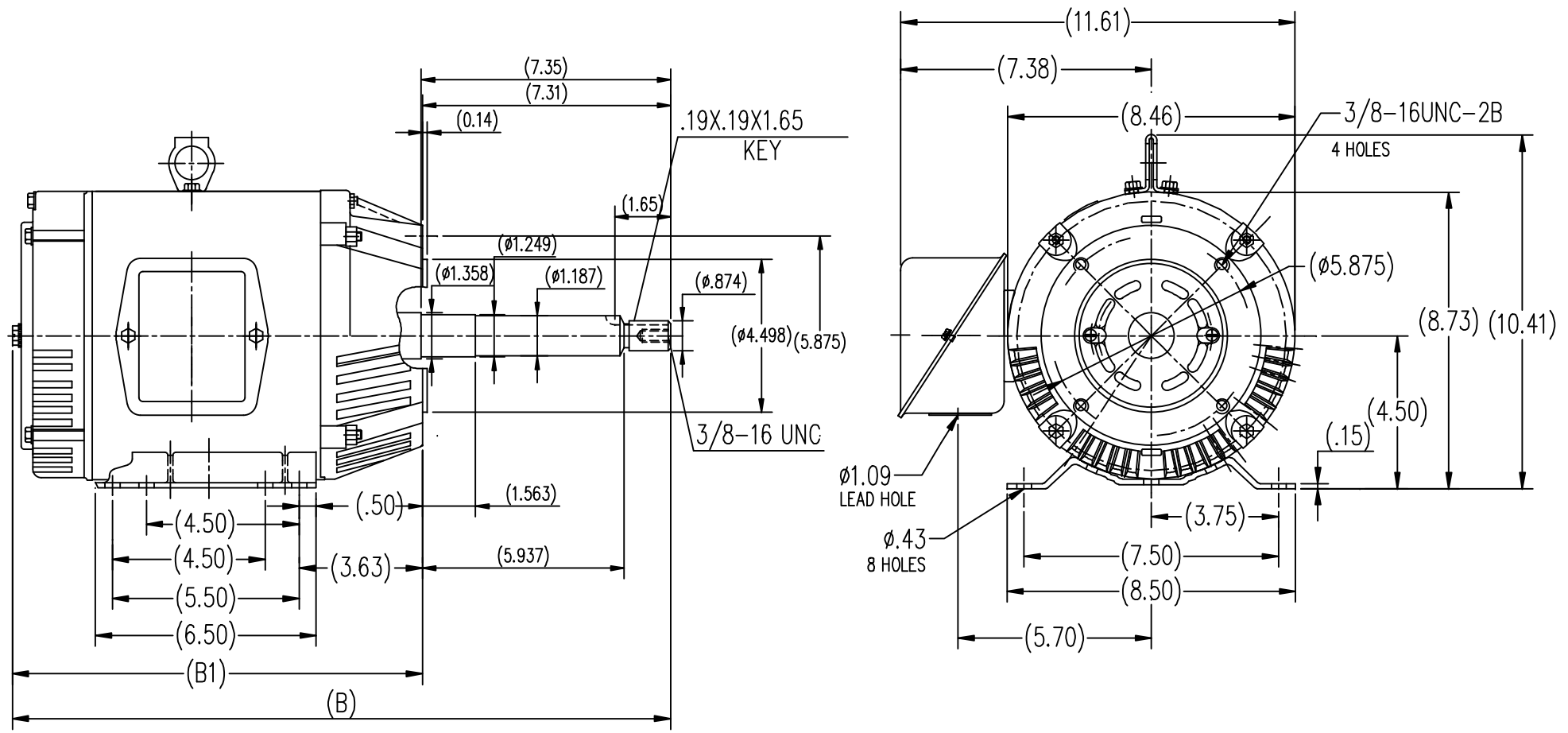
RegalRexnord

Nameplate Specifications


Phase	3	Output HP	7.50 Hp
Output KW	5.6 kW	Voltage	575 V
Speed	3500 rpm	Service Factor	1.15
Frame	184JP	Enclosure	Drip Proof
Thermal Protection	No Protection	Efficiency	88.5 %
Ambient Temperature	40 °C	Frequency	60 Hz
Current	7.2 A	Power Factor	88
Duty	Continuous	Insulation Class	F
Design Code	B	KVA Code	H
Drive End Bearing Size	6307	Opp Drive End Bearing Size	6205
UL	Recognized	CSA	Y
CE	Y	IP Code	22
Number of Speeds	1		

Technical Specifications

Electrical Type	Squirrel Cage Inverter Rated	Starting Method	Line Or Inverter
Poles	2	Rotation	Reversible
Resistance Main	1.65 Ohms	Mounting	Rigid Base
Motor Orientation	Horizontal	Drive End Bearing	Ball
Opp Drive End Bearing	Ball	Frame Material	Rolled Steel
Shaft Type	JP	Overall Length	20.46 in
Shaft Diameter	0.875 in	Shaft Extension	7.35 in
Assembly/Box Mounting	F1 Only		
Outline Drawing	SS620570-184T	Connection Drawing	EE7300



182T	12.09	19.44
184T	13.11	20.46
FRAME	B1	B

			TOLERANCES UNLESS SPECIFIED		 REGAL-BELOIT CORPORATION	DRAWN ZXC 05-17-2012	
NO.	REVISION	BY & DATE	DEC.	INCHES		CHK	
			.X	±.1	ODP-182/184JP FR-ROLLED STEEL	APPD	
			.XX	±.03		SCALE	1=4
			.XXX	±.005		REF	
			.XXXX	±.0005		FMF	HWADA
			CHK	ANG	FINISH	PREV	
THIS DRAWING IN DESIGN AND DETAIL IS OUR PROPERTY AND MUST NOT BE USED EXCEPT IN CONNECTION WITH OUR WORK ALL RIGHTS OF DESIGN AND INVENTION ARE RESERVED THIS IS AN ELECTRONICALLY GENERATED DOCUMENT - DO NOT SCALE THIS PRINT			RFP	CAD FILE	SS620570	SIZE	DRAWING NO.
			DIST			B	SS620570
							REV.

THREE PHASE - SINGLE VOLTAGE
MOTOR - CONDUIT BOX @ 'A'

TO REVERSE ROTATION:
INTERCHANGE ANY TWO LINE
LEAD CONNECTIONS

TERMINAL BLOCK WHEN SPECIFIED

IF MOTOR HAS 9 LEADS

T1(U1) T1(U1) T1(U1) → L1

T2(V1) T2(V1) T2(V1) → L2

T3(W1) T3(W1) T3(W1) → L3

IF MOTOR HAS 6 LEADS

T1(U1) T1(U1) → L1

T2(V1) T2(V1) → L2

T3(W1) T3(W1) → L3

A-9806 DECAL



VIEW OF TERMINAL END

OPTIONAL CORD CONNECTION	
L1	WHITE
L2	RED
L3	BLACK

DRAWING REVISION AC	REVISION BY BS	REV DATE/© DATE 26/07/2022
REQUEST NUMBER CR-0010402	APPROVED BY SN	DATE 26/07/2022
REQUEST NUMBER DESCRIPTION DRAWING UPDATED		
COPYRIGHT (PER REVISION DATE) REGAL BELOIT AMERICA, INC. ALL RIGHTS RESERVED. PROPRIETARY AND CONFIDENTIAL INFORMATION - THIS DOCUMENT IS THE PROPERTY OF REGAL BELOIT AMERICA, INC. ("OWNER") AND CONTAINS OWNER'S PROPRIETARY INFORMATION. ANY PERSON, CORPORATION OR OTHER FIRM RECEIVING IT IS DEEMED, BY RECEIVING IT, TO AGREE THAT IT, AND/OR ANY PART OF IT, SHALL NOT BE DISCLOSED TO ANY PERSON, CORPORATION OR OTHER ENTITY, DUPLICATED, AND/OR USED, EXCEPT AS EXPRESSLY APPROVED IN WRITING IN ADVANCE BY OWNER. THIS DOCUMENT SHALL BE RETURNED TO OWNER UPON REQUEST. IT MAY BE SUBJECT TO CERTAIN RESTRICTIONS UNDER APPLICABLE EXPORT CONTROL LAWS AND REGULATIONS.		

PRIMARY DIMENSIONS ARE INCH
mm DIMENSIONS IN [BRACKETS]
ARE FOR REFERENCE ONLY

DRAWN BY DA
DATE 03-26-1993
APPROVED BY TB
DATE 03-26-1993
REFERENCE
THIRD ANGLE PROJECTION

Regal Beloit America, Inc.	
DESCRIPTION CONNECTION DIAGRAM EXTERNAL - SINGLE VOLTAGE - 3Ø MOTOR	
MATERIAL	PROCESS/FINISH
SIZE A	DRAWING NUMBER EE7300
SHEET 1 OF 1	

CERTIFICATION DATA SHEET

Model#: 184TTDB6013 AA

WINDING#: CHT18420006 NONE 3

CONN. DIAGRAM: EE7300

ASSEMBLY: F1/F2 CAPABLE

OUTLINE: SS620570

TYPICAL MOTOR PERFORMANCE DATA

HP	KW	SYNC. RPM	F.L. RPM	FRAME	ENCLOSURE	KVA CODE	DESIGN
7 1/2	5.60	3600	3500	184JP	DP	H	B

PH	Hz	VOLTS	FL AMPS	START TYPE	DUTY	INSL	S.F	AMB°C	ELEVATION
3	60	575	7.2	LINE OR INVERTER	CONTINUOU S	F7	1.15	40	3300

FULL LOAD EFF: 88.5	3/4 LOAD EFF: 88.5	1/2 LOAD EFF: 87.5	GTD. EFF	ELEC. TYPE	NO LOAD AMPS
FULL LOAD PF: 88	3/4 LOAD PF: 86	1/2 LOAD PF: 77	87.5	SQ CAGE INV RATED	2.6

F.L. TORQUE	LOCKED ROTOR AMPS	L.R. TORQUE	B.D. TORQUE	F.L. RISE°C
11.2 LB-FT	54.4	28 LB-FT 250	40.5 LB-FT 362	60

SOUND PRESSURE @ 3 FT.	SOUND POWER	ROTOR WK^2	MAX. WK^2	SAFE STALL TIME	STARTS /HOUR	APPROX. MOTOR WGT
71 dBA	81 dBA	0.28 LB-FT^2	15 LB-FT^2	10 SEC.	2	95 LBS.

*** SUPPLEMENTAL INFORMATION ***

DE BRACKET TYPE	ODE BRACKET TYPE	MOUNT TYPE	ORIENTATION	SEVERE DUTY	HAZARDOUS LOCATION	DRIP COVER	SCREENS	PAINT
C-FACE	STANDARD	RIGID	HORIZONTAL	FALSE	NONE	FALSE	NONE	BLUE (ENAMEL)

BEARINGS		GREASE	SHAFT TYPE	SPECIAL DE	SPECIAL ODE	SHAFT MATERIAL	FRAME MATERIAL
DE	OPE						
BALL	BALL						
6307	6205	POLYREX EM	JP	NONE	NONE	1045 HOT ROLLED (C-204)	ROLLED STEEL

THERMO-PROTECTORS				THERMISTORS	CONTROL	SPACE /n HEATERS
THERMOSTATS	PROTECTORS	WDG RTDs	BRG RTDs			
NONE	NOT	NONE	NONE	NONE	FALSE	NONE VOLTS

If Inverter equals NONE, contact factory for further information

INVERTER TORQUE: VARIABLE 10:1
INV. HP SPEED RANGE: NONE
ENCODER: NONE
NONE NONE
NONE NONE PPR
BRAKE: NONE NONE
NONE P/N NONE
NONE NONE
NONE FT-LB NONE V NONE Hz

*
N
O
T
E
S
*

DATE: 06/28/2017 06:28:04 AM

FORM 3531 REV.3 02/07/99

** Subject to change without notice.

Data Sheet

Date: 6/20/2017

Customer: _____

Attention: _____

Submitted by: FAREEDA DUDEKULA



184TTDB6013

Submittal

Data @ 575 V

Motor Load Data

Load	0%	25%	50%	75%	100%	115%	125%	LR	
Current (Amps)	2.56	3.0	4.2	5.5	6.9	7.8	8.5	54.4	
Torque (ft-lb)	0.00	2.75	5.5	8.4	11.2	13.0	14.2	28.0	
RPM	3600	3575	3550	3525	3510	3,490	3470	0	
Efficiency (%)		84.0	87.5	88.5	88.5	87.5	86.5		
P.F. (%)	9.0	56.0	77.0	86.0	90.0	90.0	90.0	48.0	

Motor Speed Data

	LR	Pull-Up	BD	Rated	Idle	Information Block																												
Speed (RPM)	0	1800	2900	3510	3600	HP		7.5																										
Current (Amps)	54.4	48.8	38.0	6.9	2.56	Sync. RPM		3600																										
Torque (ft-lb)	28.0	25.2	40.5	11.2	0.00	Frame		182																										
<div><div>— Efficiency (%) — P.F. (%) — Current (Amps)</div><table border="1"><caption>Graph Data Points (Approximate)</caption><thead><tr><th>Load (%)</th><th>Efficiency (%)</th><th>P.F. (%)</th><th>Current (Amps)</th></tr></thead><tbody><tr><td>25</td><td>84</td><td>55</td><td>3.0</td></tr><tr><td>50</td><td>87</td><td>75</td><td>4.5</td></tr><tr><td>75</td><td>88</td><td>85</td><td>6.0</td></tr><tr><td>100</td><td>87</td><td>90</td><td>7.5</td></tr><tr><td>125</td><td>86</td><td>90</td><td>8.5</td></tr></tbody></table></div>						Load (%)	Efficiency (%)	P.F. (%)	Current (Amps)	25	84	55	3.0	50	87	75	4.5	75	88	85	6.0	100	87	90	7.5	125	86	90	8.5	Enclosure		DP		
						Load (%)	Efficiency (%)	P.F. (%)	Current (Amps)																									
						25	84	55	3.0																									
						50	87	75	4.5																									
						75	88	85	6.0																									
						100	87	90	7.5																									
						125	86	90	8.5																									
						Construction		TDB																										
						Voltage		575 V																										
						Frequency		60 Hz																										
						Design		A																										
						LR Code letter		J																										
						Service Factor		1.15																										
						Temp Rise @ FL		70 ° C																										
						Duty		CONT																										
						Ambient		40 ° C																										
						Elevation		1,000 feet																										
Rotor/Shaft wk²		0.28 Lb-Ft²																																
Ref Wdg		CHT18420006 NONE																																
Sound Pressure @ 1M		71 dBA																																
VFD Rating		VARIABLE 10:1																																
Outline Dwg		SS620570																																
Conn. Diag		EE7300																																
Additional Specifications:																																		
0																																		
0						EQUIV CKT (OHMS / PHASE)																												
R1		R2		X1		X2		Xm																										
1.5190		1.2270		3.8550		2.1610		176.3870																										

Speed -Torque Curve

