

PRODUCT INFORMATION PACKET

Model No: 184THTY7726

Catalog No: Y543A

Black Max® Inverter Duty Speed Ratio Motor, 5 HP, 3 Ph, 60 Hz, 230/460 V, 1800 RPM, 184TC Frame,
TENV



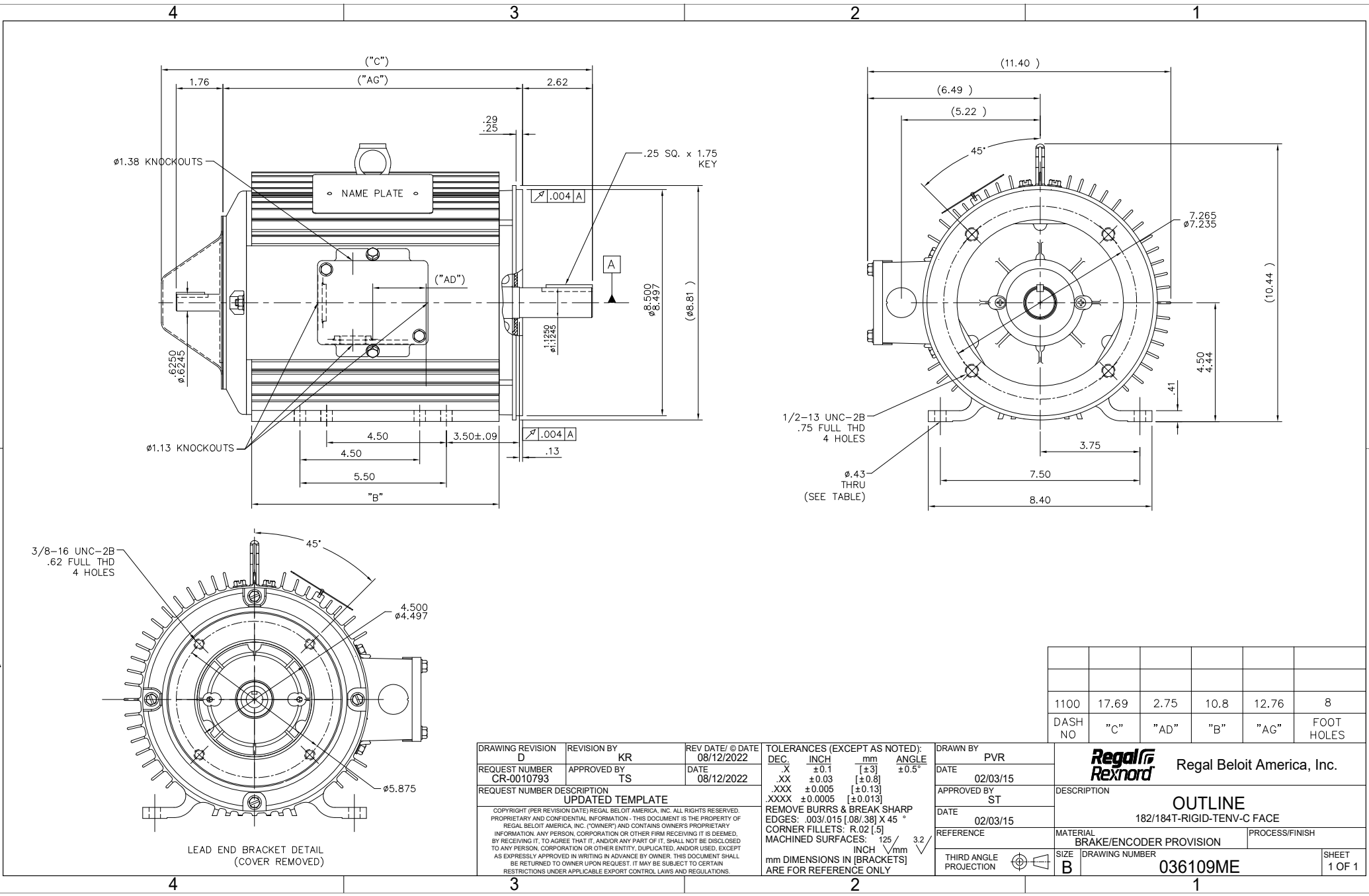
Regal and Marathon are trademarks of Regal Rexnord Corporation or one of its affiliated companies.
©2024 Regal Rexnord Corporation, All Rights Reserved. MC017097E

Nameplate Specifications

Phase	3	Output HP	5 Hp
Output KW	3.7 kW	Voltage	230/460 V
Speed	1760 rpm	Service Factor	1.0
Frame	184TC	Enclosure	Totally Enclosed Non Ventilated
Thermal Protection	Thermostat	Efficiency	89.5 %
Ambient Temperature	40 °C	Frequency	60 Hz
Current	13.4/6.7 A	Power Factor	79
Duty	Continuous	Insulation Class	F
Design Code	INV	KVA Code	L
Drive End Bearing Size	6207	Opp Drive End Bearing Size	6206
UL	Recognized	CSA	Y
CE	Y	IP Code	43
Number of Speeds	1		

Technical Specifications

Electrical Type	Squirrel Cage Inverter Duty	Starting Method	Inverter Only
Poles	4	Rotation	Selective Clockwise
Resistance Main	2.15 Ohms	Mounting	Rigid Base
Motor Orientation	Horizontal	Drive End Bearing	Ball
Opp Drive End Bearing	Ball	Frame Material	Aluminum
Shaft Type	T	Overall Length	17.69 in
Frame Length	11.00 in	Shaft Diameter	1.125 in
Shaft Extension	2.62 in	Assembly/Box Mounting	F1/F2 CAPABLE
Inverter Load	CONSTANT 1000:1		
Connection Drawing	005010.20ME	Outline Drawing	036109ME-1100



1100	17.69	2.75	10.8	12.76	8
DASH NO	"C"	"AD"	"B"	"AG"	FOOT HOLES

DRAWING REVISION D	REVISION BY KR	REV DATE/ © DATE 08/12/2022
REQUEST NUMBER CR-0010793	APPROVED BY TS	DATE 08/12/2022
REQUEST NUMBER DESCRIPTION UPDATED TEMPLATE		
<small>COPYRIGHT (PER REVISION DATE) REGAL BELOIT AMERICA, INC. ALL RIGHTS RESERVED. PROPRIETARY AND CONFIDENTIAL INFORMATION - THIS DOCUMENT IS THE PROPERTY OF REGAL BELOIT AMERICA, INC. (OWNER) AND CONTAINS OWNER'S PROPRIETARY INFORMATION. ANY PERSON, CORPORATION OR OTHER FIRM RECEIVING IT IS DEEMED, BY RECEIVING IT, TO AGREE THAT IT, AND/OR ANY PART OF IT, SHALL NOT BE DISCLOSED TO ANY PERSON, CORPORATION OR OTHER ENTITY, DUPLICATED, AND/OR USED, EXCEPT AS EXPRESSLY APPROVED IN WRITING IN ADVANCE BY OWNER. THIS DOCUMENT SHALL BE RETURNED TO OWNER UPON REQUEST. IT MAY BE SUBJECT TO CERTAIN RESTRICTIONS UNDER APPLICABLE EXPORT CONTROL LAWS AND REGULATIONS.</small>		

TOLERANCES (EXCEPT AS NOTED):
 DEC. INCH mm ANGLE
 .X ±0.1 [±3] ±0.5°
 .XX ±0.03 [±0.8]
 .XXX ±0.005 [±0.13]
 .XXXX ±0.0005 [±0.013]
 REMOVE BURRS & BREAK SHARP EDGES: .003/.015 [.08/.38] X 45°
 CORNER FILLETS: R.02 [5]
 MACHINED SURFACES: 125 / 32 INCH / mm

DRAWN BY PVR
DATE 02/03/15
APPROVED BY ST
DATE 02/03/15
REFERENCE
THIRD ANGLE PROJECTION

Regal Rexnord Regal Beloit America, Inc.

DESCRIPTION
OUTLINE
182/184T-RIGID-TENV-C FACE

MATERIAL
BRAKE/ENCODER PROVISION

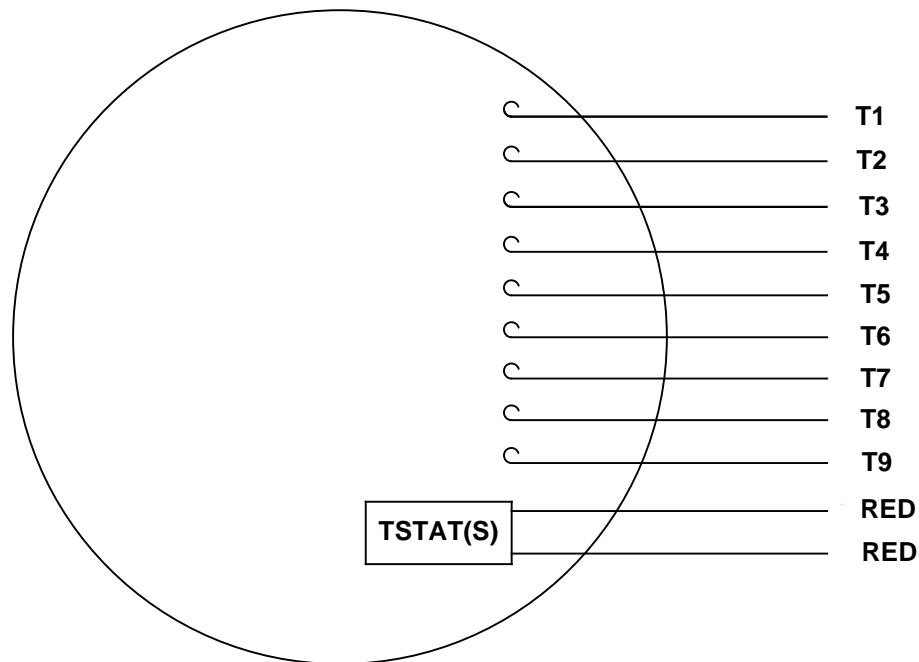
PROCESS/FINISH

SIZE
B

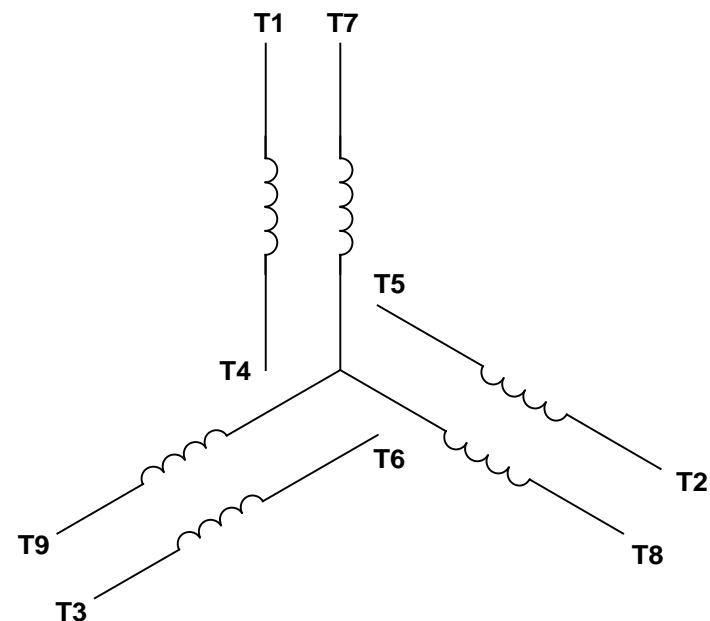
DRAWING NUMBER
036109ME

SHEET
1 OF 1

VIEW FROM OUTSIDE OF MOTOR AT SWITCH END.



LINE LEADS



RBC PROPRIETARY AND CONFIDENTIAL INFORMATION
 This document is the property of REGAL BELOIT CORPORATION ("RBC") including its subsidiaries and divisions and contains proprietary information of RBC. This document is loaned on the express condition that neither it nor the information contained therein shall be disclosed to others without the express written consent of RBC, and that the information shall be used by the recipient only as approved expressly by RBC. This document shall be returned to RBC upon its request. This document may be subject to certain restrictions under U.S. export control laws and regulations.

VOLTAGE	L1	L2	L3	JOIN & INSULATE
HIGH	T1	T2	T3	(T4, T7) (T5, T8) (T6, T9)
LOW	T1, T7	T2, T8	T3, T9	T4, T5, T6

		TOLERANCES UNLESS SPECIFIED				DRAWN RDW 04/13/04	
		DEC	INCHES			CHK	
		.X	±.1			APPR	
		.XX	±.01			SCALE 1:1	
			.XXX	±.005	TITLE EXTERNAL WIRING DIAGRAM		REF
			.XXX	±.0005	3 PHASE		
--	REDRAWN IN SOLIDWORKS	VJB 02/08/11		.XXX	±.0005	MAT'L DECAL - 004014 (TSTAT) - 080582	FMF 129027
NO	REVISION	BY & DATE	CHK	ANG	±1/2°	FINISH	PAGE OF
THIRD ANGLE PROJECTION			RFP	PREV			SIZE
			NETWORK FILE NAME 00501020ME			DRAWING NO	
						A	
						005010-20ME	
						REV	
						--	

CERTIFICATION DATA SHEET

Model#: 184THTY7726 AA
 CONN. DIAGRAM: 005010.20ME
 OUTLINE: 036109ME-1100

WINDING#: T84181 NONE 3
 ASSEMBLY: F1/F2 CAPABLE

TYPICAL MOTOR PERFORMANCE DATA

HP	KW	SYNC. RPM	F.L. RPM	FRAME	ENCLOSURE	KVA CODE	DESIGN			
5	3.7	1800	1760	184TC	TENV	L	INV			
PH	Hz	VOLTS	FL AMPS	START TYPE	DUTY	INSL	S.F	AMB°C	ELEVATION	
3	60	230/460	13.4/6.7	INVERTER ONLY	CONTINUOUS	F4	1.0	40	3300	
FULL LOAD EFF: 89.5		3/4 LOAD EFF: 90		1/2 LOAD EFF: 89.1		GTD. EFF		ELEC. TYPE		NO LOAD AMPS
FULL LOAD PF: 79		3/4 LOAD PF: 72.1		1/2 LOAD PF: 61.3		87.5		SQ CAGE INV DUTY		6.4 / 3.2
F.L. TORQUE		LOCKED ROTOR AMPS		L.R. TORQUE		B.D. TORQUE		F.L. RISE°C		
14.9 LB-FT		122 / 61		42 LB-FT 282		61.5 LB-FT 413		85		
SOUND PRESSURE @ 3 FT.	SOUND POWER	ROTOR WK^2	MAX. WK^2	SAFE STALL TIME	STARTS /HOUR	APPROX. MOTOR WGT				
62 dBA	72 dBA	0.52 LB-FT^2	0 LB-FT^2	0 SEC.	0	92 LBS.				

EQUIVALENT WYE CKT.PARAMETERS (OHMS PER PHASE)

R1	R2	X1	X2	XM
1.42884	1.04895	2.09223	3.37932	63.3339
RM	ZREF	XR	TD	TD0
0	56.7	0	0	0

*** SUPPLEMENTAL INFORMATION ***

DE BRACKET TYPE	ODE BRACKET TYPE	MOUNT TYPE	ORIENTATION	SEVERE DUTY	HAZARDOUS LOCATION	DRIP COVER	SCREENS	PAINT
C-FACE	BRAKE OR ENCODER	RIGID	HORIZONTAL	FALSE	NONE	FALSE	NONE	BLACK (ENAMEL)

BEARINGS		GREASE	SHAFT TYPE	SPECIAL DE	SPECIAL ODE	SHAFT MATERIAL	FRAME MATERIAL
DE	OPE						
BALL	BALL						
6207	6206	POLYREX EM	T	NONE	NONE	1144 STRESSPROOF (C-223)	ALUMINUM

THERMO-PROTECTORS				THERMISTORS	CONTROL	SPACE /n HEATERS
THERMOSTATS	PROTECTORS	WDG RTDs	BRG RTDs			
TSTATS (N/C)	NOT	NONE	NONE	NONE	FALSE	NONE VOLTS

If Inverter equals NONE, contact factory for further information

*
N
O
T
E
S
*

INVERTER TORQUE: CONSTANT 1000:1
INV. HP SPEED RANGE: 2.0 X BASE SPEED
ENCODER: PROVISIONS ONLY
NONE NONE
NONE NONE PPR
BRAKE: PROVISIONS ONLY NONE

NONE	P/N	NONE	
NONE		NONE	
NONE FT-LB		NONE V	NONE Hz

DATE: 06/28/2017 06:24:13 AM

FORM 3531 REV.3 02/07/99

** Subject to change without notice.

Data Sheet

Date: 6/29/2017

Customer: _____

Attention: _____

Submitted by: FAREEDA DUDEKULA



184THTY7726

Submittal

Data @ 460 V

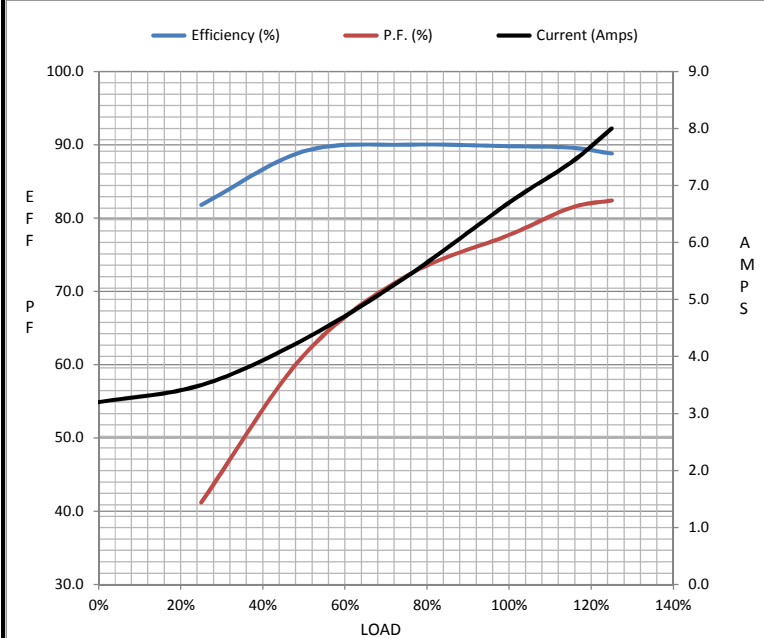
Motor Load Data

Load	0%	25%	50%	75%	100%	115%	125%	LR
Current (Amps)	3.2	3.5	4.3	5.4	6.7	7.4	8.0	61.0
Torque (ft-lb)	0.00	3.7	7.4	11.1	14.9	17.3	18.8	42.0
RPM	1800	1790	1780	1770	1760	1,750	1745	0
Efficiency (%)		81.8	89.1	90.0	89.8	89.6	88.8	
P.F. (%)	5.9	41.2	61.3	72.1	77.7	81.4	82.4	52.0

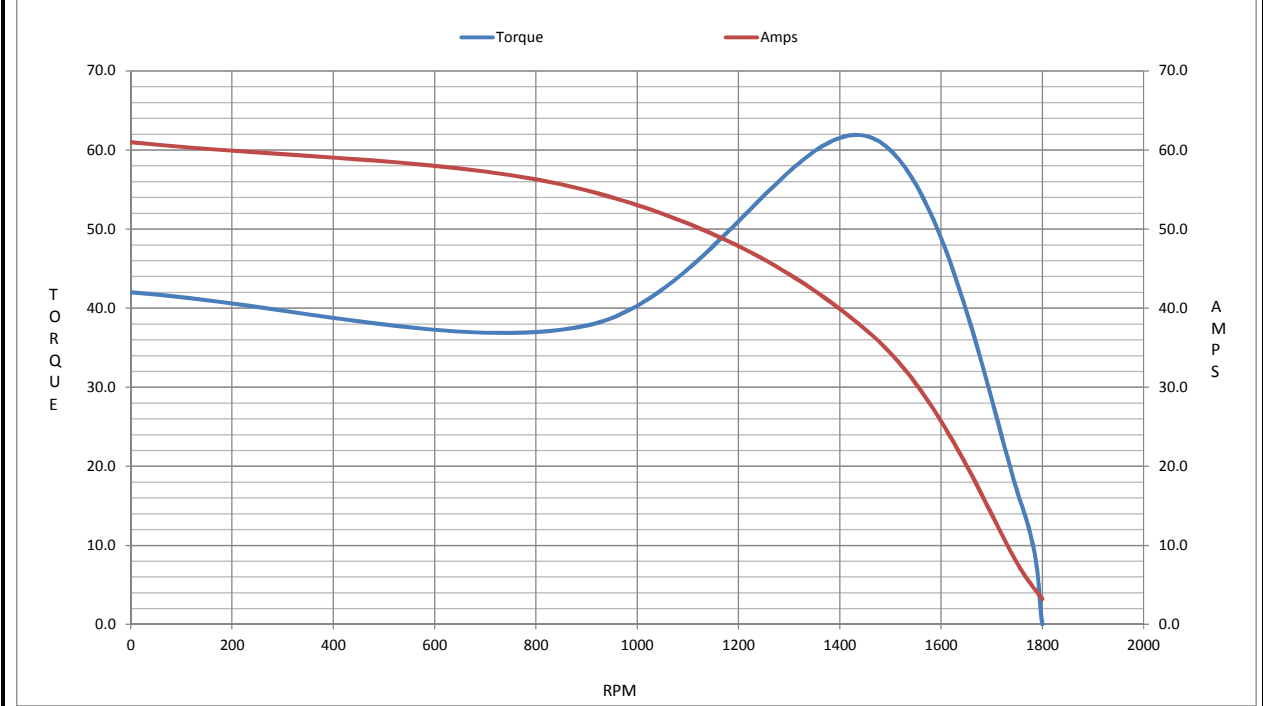
Motor Speed Data

	LR	Pull-Up	BD	Rated	Idle
Speed (RPM)	0	900	1465	1760	1800
Current (Amps)	61.0	54.9	36.5	6.7	3.2
Torque (ft-lb)	42.0	37.8	61.5	14.9	0.00

Information Block				
HP	5.0			
Sync. RPM	1800			
Frame	184			
Enclosure	TENV			
Construction	TTL			
Voltage	230/460 V			
Frequency	60 Hz			
Design	A			
LR Code letter	L			
Service Factor	1.15			
Temp Rise @ FL	85 °C			
Duty	CONT			
Ambient	40 °C			
Elevation	1,000 feet			
Rotor/Shaft wk ²	0.52 Lb-Ft ²			
Ref Wdg	T84181 NONE			
Sound Pressure @ 1M	62 dBA			
VFD Rating	CONSTANT 1000:1			
Outline Dwg	036109ME-1100			
Conn. Diag	005010.20ME			
Additional Specifications:				
0				
0				
EQUIV CKT (OHMS / PHASE)				
R1	R2	X1	X2	Xm
1.4290	1.0490	2.0920	3.3790	63.3340



Speed -Torque Curve



EC Declaration of Conformity

The undersigned representing
the manufacturer:

Regal Beloit America
100 East Randolph St.
Wausau, WI 54401

and the authorized representative
established within the Community:

Marathon Electric UK
6F Thistleton Road Ind. Estate
Market Overton
Oakham, Rutland LE15 7PP UK

are committed to providing customers with products that comply with applicable regulations and international protocols to which they are subject, including the requirements of the European Parliament Directive on the Harmonization of the laws relating to electrical equipment designed for use within certain voltage limits (2014/35/EU).

Regal Beloit America declares that the following product(s), to which this declaration relates, are in conformity with the relevant sections of the EC standards listed below.

This statement supersedes any statements previously issued pertaining to the product(s) listed below and is subject to change without notice.

Model No : 184THTY7726

(Model No. may contain prefix and/or suffix characters)

Catalog No : Y543A

Rework No : N/A

Directives :

Low Voltage Directive 2014/35/EU

Harmonized Standards Used :

EN 60034-1: 2010 (IEC 60034-1: 2010)

EN 60034-5: 2001/A1:2007 (IEC 60034-5: 2000/A1:2006)

Authorized Representative:



Michael A. Logsdon
Vice President, Technology

Authorized Representative in the Community:



Julian Clark
Marketing Engineer

Created on 09/01/2022

CE 22