

# PRODUCT INFORMATION PACKET

Model No: 184THTY17038

Catalog No: Y287A

microMAX™ Plus Inverter Duty Encoder Motor, 5 HP, 3 Ph, 60 Hz, 230/460 V, 1800 RPM, 184TC Frame,  
TENV



Regal and Marathon are trademarks of Regal Rexnord Corporation or one of its affiliated companies.  
©2024 Regal Rexnord Corporation, All Rights Reserved. MC017097E



### Nameplate Specifications

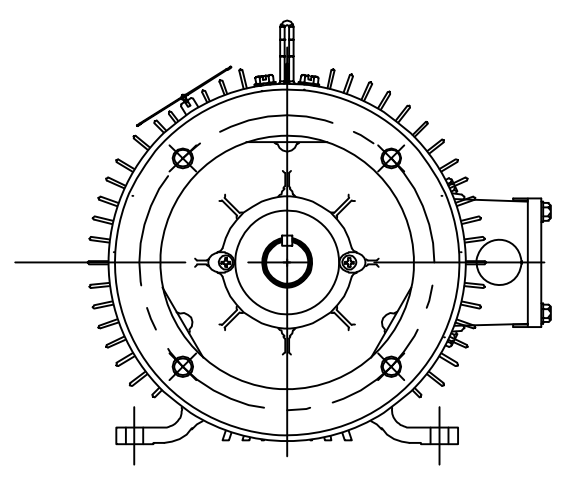
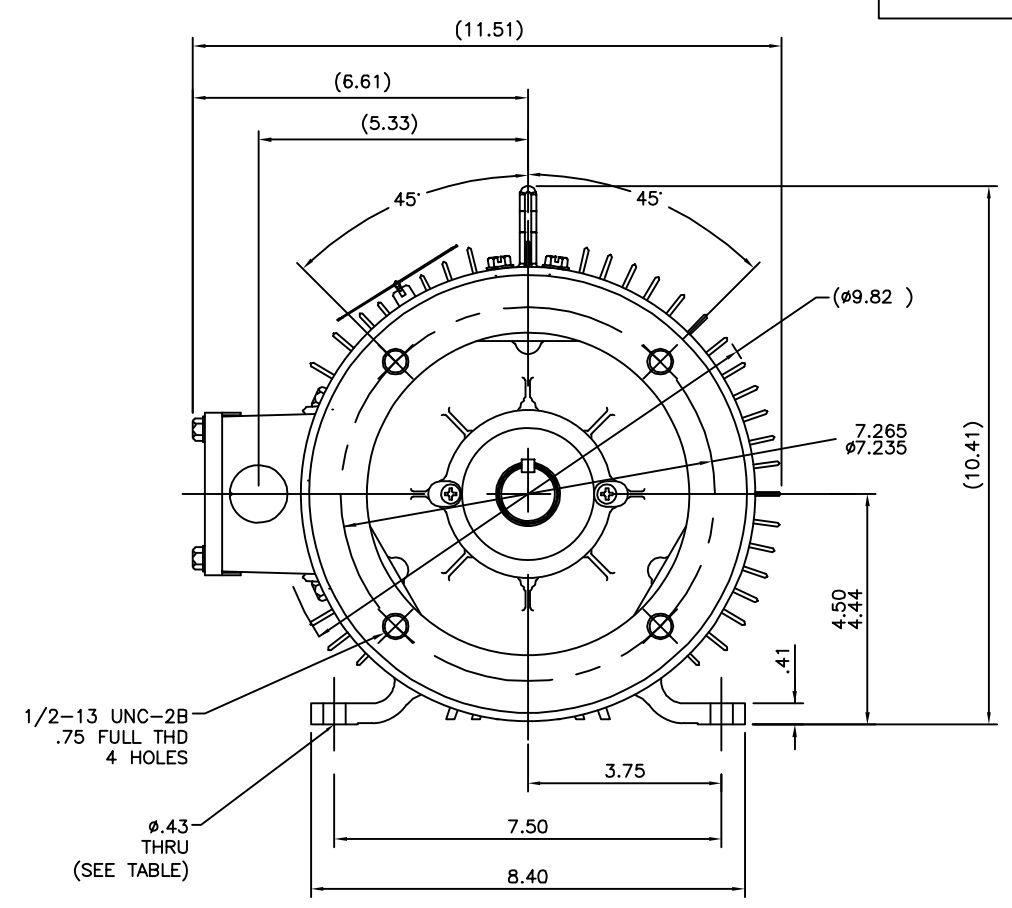
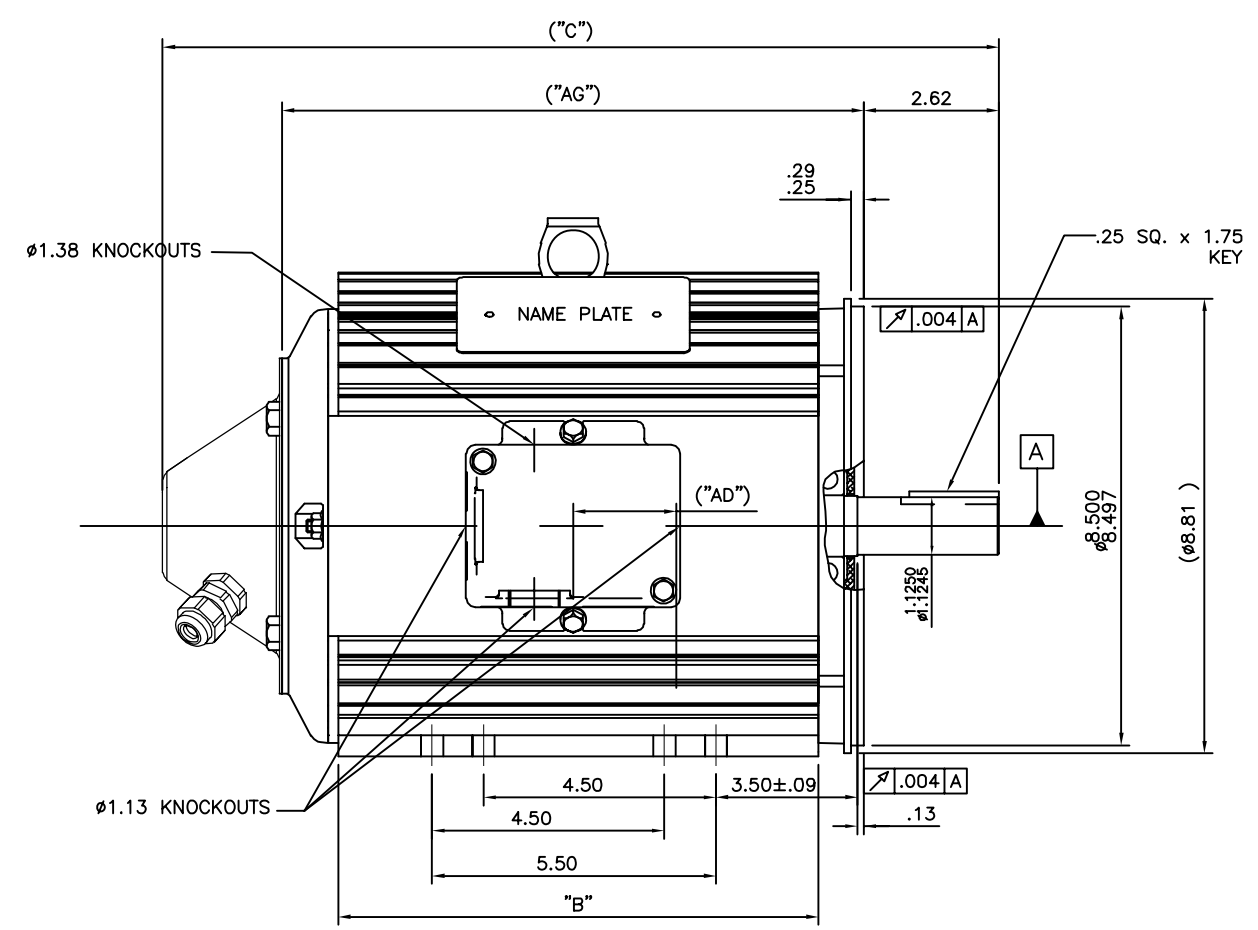
|                        |                      |                            |  |
|------------------------|----------------------|----------------------------|--|
| Phase                  | <b>3</b>             | Output HP                  | <b>5 Hp</b>                            |
| Output KW              | <b>3.7 kW</b>        | Voltage                    | <b>230/460 V</b>                       |
| Speed                  | <b>1760 rpm</b>      | Service Factor             | <b>1.00</b>                            |
| Frame                  | <b>184TC</b>         | Enclosure                  | <b>Totally Enclosed Non Ventilated</b> |
| Thermal Protection     | <b>No Protection</b> | Efficiency                 | <b>89.5 %</b>                          |
| Ambient Temperature    | <b>40 °C</b>         | Frequency                  | <b>60 Hz</b>                           |
| Current                | <b>13.4/6.7 A</b>    | Power Factor               | <b>78</b>                              |
| Duty                   | <b>Continuous</b>    | Insulation Class           | <b>F</b>                               |
| Design Code            | <b>INV</b>           | KVA Code                   | <b>L</b>                               |
| Drive End Bearing Size | <b>6207</b>          | Opp Drive End Bearing Size | <b>6206</b>                            |
| UL                     | <b>Recognized</b>    | CSA                        | <b>Y</b>                               |
| CE                     | <b>Y</b>             | IP Code                    | <b>43</b>                              |
| Number of Speeds       | <b>1</b>             |                            |  |

### Technical Specifications

|                       |                                    |                       |                      |
|-----------------------|------------------------------------|-----------------------|----------------------|
| Electrical Type       | <b>Squirrel Cage Inverter Duty</b> | Starting Method       | <b>Inverter Only</b> |
| Poles                 | <b>4</b>                           | Rotation              | <b>Reversible</b>    |
| Resistance Main       | <b>2.15 Ohms</b>                   | Mounting              | <b>Rigid Base</b>    |
| Motor Orientation     | <b>Horizontal</b>                  | Drive End Bearing     | <b>Ball</b>          |
| Opp Drive End Bearing | <b>Ball</b>                        | Frame Material        | <b>Aluminum</b>      |
| Shaft Type            | <b>T</b>                           | Overall Length        | <b>17.69 in</b>      |
| Frame Length          | <b>11.00 in</b>                    | Shaft Diameter        | <b>1.125 in</b>      |
| Shaft Extension       | <b>2.62 in</b>                     | Assembly/Box Mounting | <b>F1/F2 CAPABLE</b> |
| Inverter Load         | <b>CONSTANT 1000:1</b>             |                       |                      |
| Outline Drawing       | <b>036110ME-1100</b>               | Connection Drawing    | <b>EE7308</b>        |



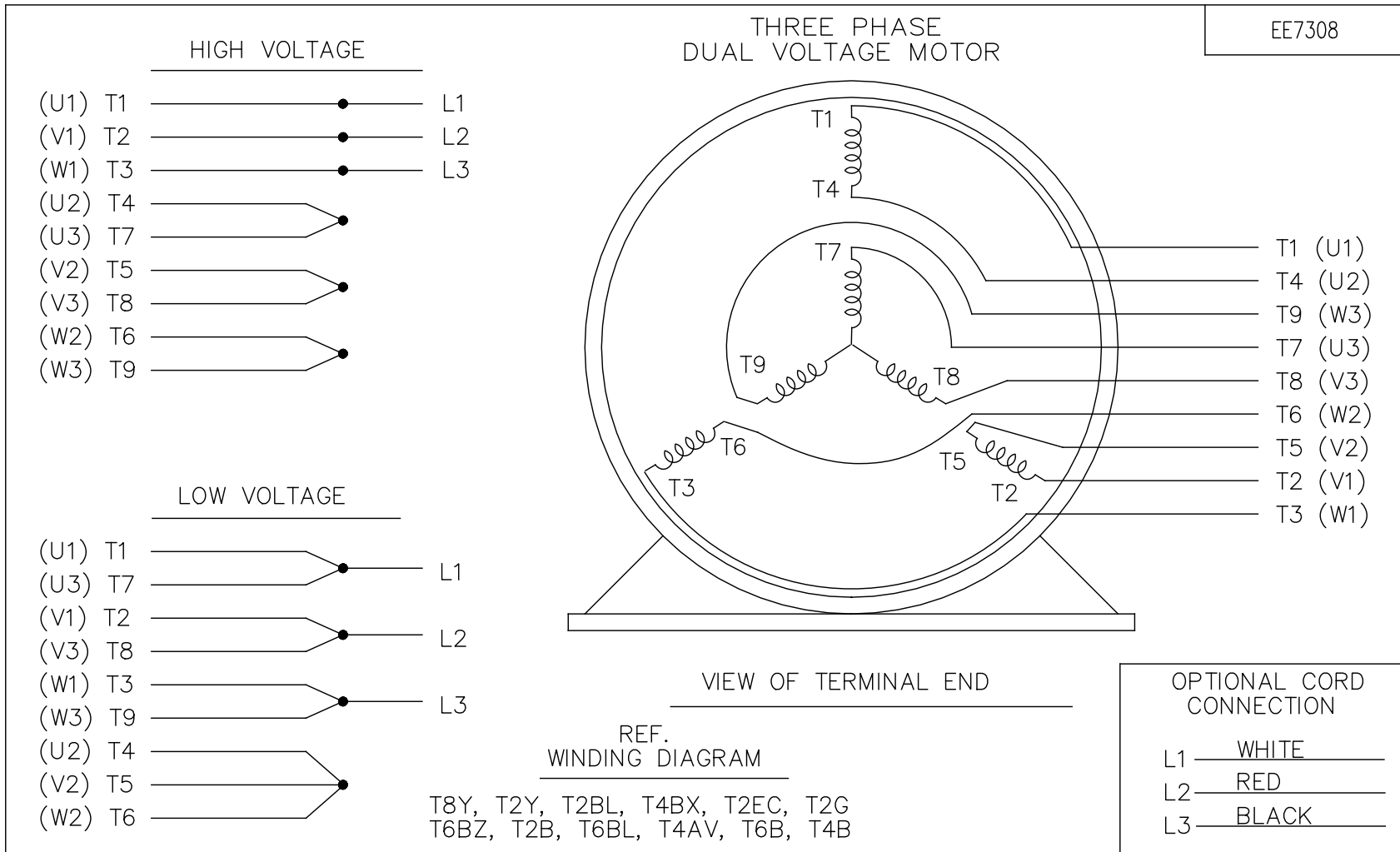
036110ME



F2 VIEW

| DASH NO | "C"   | "AD" | "B"  | "AG"  | FOOT HOLES |
|---------|-------|------|------|-------|------------|
| 1100    | 17.69 | 2.75 | 10.8 | 12.78 | 8          |

|  |                              | TOLERANCES UNLESS SPECIFIED |          | MARATHON ELECTRIC                        |             | DRAWN PVR 02/03/15 |                              |
|--|------------------------------|-----------------------------|----------|--|-------------|--------------------|------------------------------|
|  |                              | DEC.                        | INCHES   |  |             | CHK                | ST 02/03/15                  |
|  |                              | .X                          | ±.1      |  |             | APPD               |                              |
|  |                              | .XX                         | ±.03     | TITLE 182/184T-RIGID-TENV-C FACE OUTLINE |             | SCALE 3=8          |                              |
| 02   | HOLE LOCATION UPDATED        | SAJ                         | 04/08/15 | ST                                       | .XXX        | ±.005              | REF 035851ME                 |
| 01   | REMOVED DASH# 950 FROM TABLE | PVR                         | 02/06/15 | ST                                       | .XXXX       | ±.0005             | MAT'L. ENCODER M.E. SUPPLIED |
| NO.  | REVISION                     | BY & DATE                   | CHK      | ANG                                      | ±1/2'       | FINISH             | PREV                         |
| THIS DRAWING IN DESIGN AND DETAIL IS OUR PROPERTY AND MUST NOT BE USED EXCEPT IN CONNECTION WITH OUR WORK ALL RIGHTS OF DESIGN AND INVENTION ARE RESERVED THIS IS AN ELECTRONICALLY GENERATED DOCUMENT - DO NOT SCALE THIS PRINT |                              |                             |          | RFP                                      | CAD FILE    | 036110ME           | SIZE B                       |
|  |                              |                             |          | DIST                                     | DRAWING NO. | 036110ME           | REV. 02                      |



| NO.  | REVISION                                       | BY & DATE      | CHK | ANG   | TOLERANCES UNLESS SPECIFIED |        | FINISH  | DRAWN RM        | ML         |                    |
|--|--|----------------|-----|-------|-----------------------------|--------|---------|-----------------|------------|--------------------|
|  |  |                |     |       | DEC.                        | INCHES |         |                 |            |                    |
| 5  | CHG TO REGAL LOGO                              | SL 09/10/2015  | AB  |       |                             |        |         | 11/20/1990      |            |                    |
| 4  | REVISED IEC NOTATIONS                          | MSG 11/15/2011 | CMN | .X    | ±.1                         |        |         |                 | 11/21/1990 |                    |
| 3  | ADDED IEC NOTATIONS... (U1), (V1) ETC. MU95194 | MSG 5/10/2010  | MJS | .XX   | ±.02                        |        |         |                 | 04/24/2003 |                    |
| 2  | ADDED THE OPTIONAL CORD CONNECTION MU46318     | RDH 04/24/2003 | DRS | .XXX  | ±.005                       |        |         |                 |            |                    |
| 1  | REDRAWN  | RM 11/20/1990  |     | .XXXX | ±.0005                      |        |         |                 |            |                    |
|  |  |                |     |       | ±7'30"                      |        |         |                 |            |                    |
| THIS DRAWING IN DESIGN AND DETAIL IS OUR PROPERTY AND MUST NOT BE USED EXCEPT IN CONNECTION WITH OUR WORK ALL RIGHTS OF DESIGN AND INVENTION ARE RESERVED THIS IS AN ELECTRONICALLY GENERATED DOCUMENT - DO NOT SCALE THIS PRINT |  |                |     |       |                             |        | RFP     | CAD FILE ee7308 | SIZE A     | DRAWING NO. EE7308 |
|  |  |                |     |       |                             |        | DIST WP |                 |            | PAGE OF 5          |

**Regal Beloit America, Inc.**

TITLE CONNECTION DIAGRAM  
3Ø - DUAL VOLTAGE MOTOR

SCALE 1=1

REF

FMF

PREV



|            |      |        |         |
|------------|------|--------|---------|
| NONE       | P/N  | NONE   |         |
| NONE       | NONE |        |         |
| NONE FT-LB |      | NONE V | NONE Hz |

DATE: 06/28/2017 06:23:47 AM  
FORM 3531 REV.3 02/07/99  
\*\* Subject to change without notice.

Data Sheet

Date: 1/4/2019  
 Customer: \_\_\_\_\_  
 Attention: \_\_\_\_\_  
 Submitted by: FAREEDA DUDEKULA



184THTY17038

**Submittal**  
 Data @ 460 V

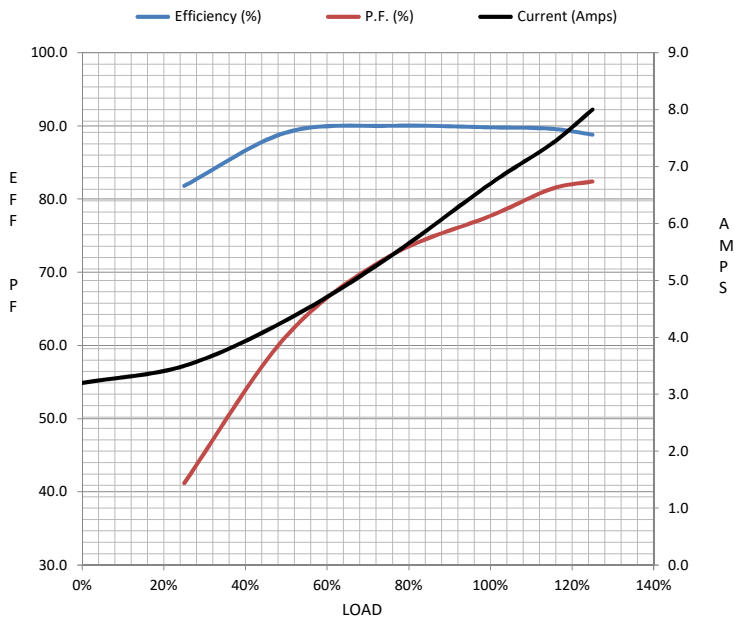
Motor Load Data

| Load           | 0%   | 25%  | 50%  | 75%  | 100% | 115%  | 125% | LR   |
|----------------|------|------|------|------|------|-------|------|------|
| Current (Amps) | 3.2  | 3.5  | 4.3  | 5.4  | 6.7  | 7.4   | 8.0  | 61.0 |
| Torque (ft-lb) | 0.00 | 3.7  | 7.4  | 11.1 | 14.9 | 17.3  | 18.8 | 42.0 |
| RPM            | 1800 | 1790 | 1780 | 1770 | 1760 | 1,750 | 1745 | 0    |
| Efficiency (%) |      | 81.8 | 89.1 | 90.0 | 89.8 | 89.6  | 88.8 |      |
| P.F. (%)       | 5.9  | 41.2 | 61.3 | 72.1 | 77.7 | 81.4  | 82.4 | 52.0 |

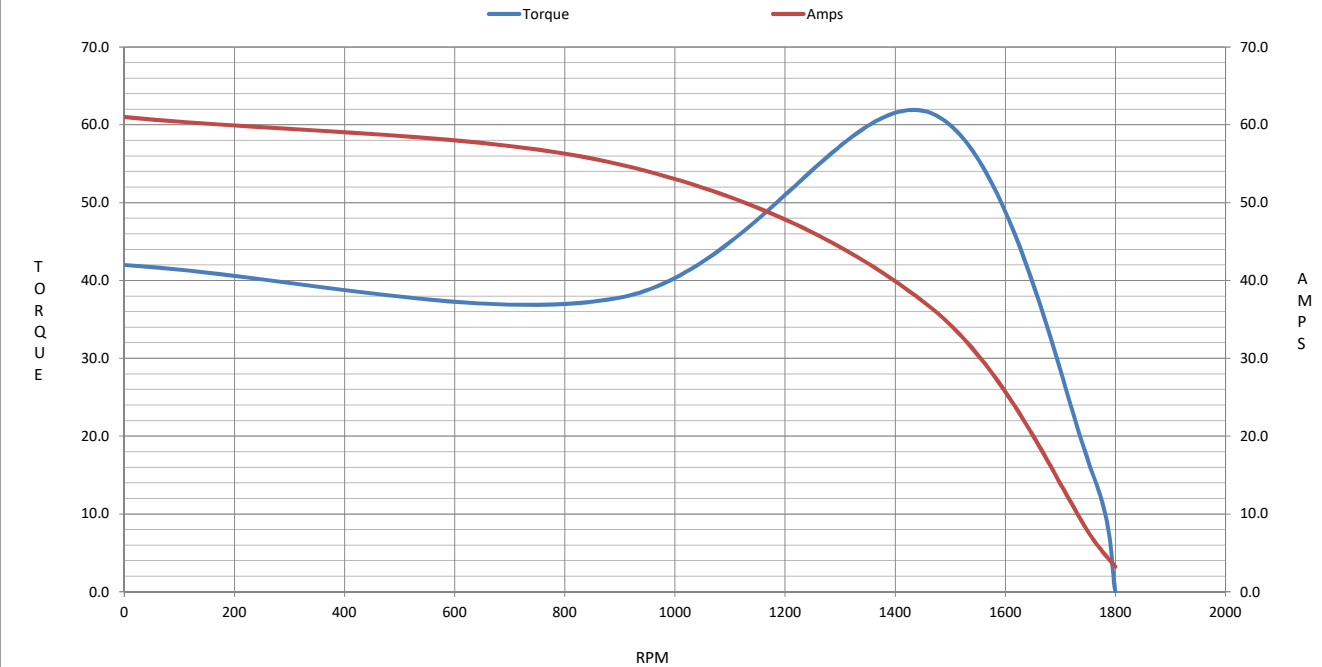
Motor Speed Data

|                | LR   | Pull-Up | BD   | Rated | Idle |
|----------------|------|---------|------|-------|------|
| Speed (RPM)    | 0    | 900     | 1465 | 1760  | 1800 |
| Current (Amps) | 61.0 | 54.9    | 36.5 | 6.7   | 3.2  |
| Torque (ft-lb) | 42.0 | 37.8    | 61.5 | 14.9  | 0.00 |

| Information Block           |                         |        |        |         |
|-----------------------------|-------------------------|--------|--------|---------|
| HP                          | 5.0                     |        |        |         |
| Sync. RPM                   | 1800                    |        |        |         |
| Frame                       | 184                     |        |        |         |
| Enclosure                   | TENV                    |        |        |         |
| Construction                | TTL                     |        |        |         |
| Voltage                     | 230/460 V               |        |        |         |
| Frequency                   | 60 Hz                   |        |        |         |
| Design                      | INV                     |        |        |         |
| LR Code letter              | L                       |        |        |         |
| Service Factor              | 1                       |        |        |         |
| Temp Rise @ FL              | 85 °C                   |        |        |         |
| Duty                        | CONT                    |        |        |         |
| Ambient                     | 40 °C                   |        |        |         |
| Elevation                   | 3,300 feet              |        |        |         |
| Rotor/Shaft wk <sup>2</sup> | 0.52 Lb-Ft <sup>2</sup> |        |        |         |
| Ref Wdg                     | T84181 NONE             |        |        |         |
| Sound Pressure @ 1M         | 62 dBA                  |        |        |         |
| VFD Rating                  | CONSTANT 1000:1         |        |        |         |
| Outline Dwg                 | 036110ME-1100           |        |        |         |
| Conn. Diag                  | 005010.01ME             |        |        |         |
| Additional Specifications:  |                         |        |        |         |
| 0                           |                         |        |        |         |
| 0                           |                         |        |        |         |
| EQUIV CKT (OHMS / PHASE)    |                         |        |        |         |
| R1                          | R2                      | X1     | X2     | Xm      |
| 1.4290                      | 1.0490                  | 2.0920 | 3.3790 | 63.3340 |



Speed - Torque Curve





## EC Declaration of Conformity

The undersigned representing  
the manufacturer:

Regal Beloit America  
100 East Randolph St.  
Wausau, WI 54401

and the authorized representative  
established within the Community:

Marathon Electric UK  
6F Thistleton Road Ind. Estate  
Market Overton  
Oakham, Rutland LE15 7PP UK

are committed to providing customers with products that comply with applicable regulations and international protocols to which they are subject, including the requirements of the European Parliament Directive on the Harmonization of the laws relating to electrical equipment designed for use within certain voltage limits (2014/35/EU).

Regal Beloit America declares that the following product(s), to which this declaration relates, are in conformity with the relevant sections of the EC standards listed below.

This statement supersedes any statements previously issued pertaining to the product(s) listed below and is subject to change without notice.

Model No : 184THTY17038

(Model No. may contain prefix and/or suffix characters)

Catalog No : Y287A

Rework No : N/A

Directives :

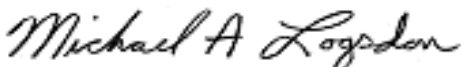
Low Voltage Directive 2014/35/EU

Harmonized Standards Used :

EN 60034-1: 2010 (IEC 60034-1: 2010)

EN 60034-5: 2001/A1:2007 (IEC 60034-5: 2000/A1:2006)

Authorized Representative:



Michael A. Logsdon  
Vice President, Technology

Authorized Representative in the Community:



Julian Clark  
Marketing Engineer

Created on 09/01/2022

**CE 22**