

PRODUCT INFORMATION PACKET

Model No: 184THTS8056

Catalog No: Y989

Blue Max® Inverter Duty Brake Motor, 5 HP, 3 Ph, 60 Hz, 230/460 V, 1800 RPM, 184TC Frame, TENV



Regal and Marathon are trademarks of Regal Rexnord Corporation or one of its affiliated companies.
©2024 Regal Rexnord Corporation, All Rights Reserved. MC017097E

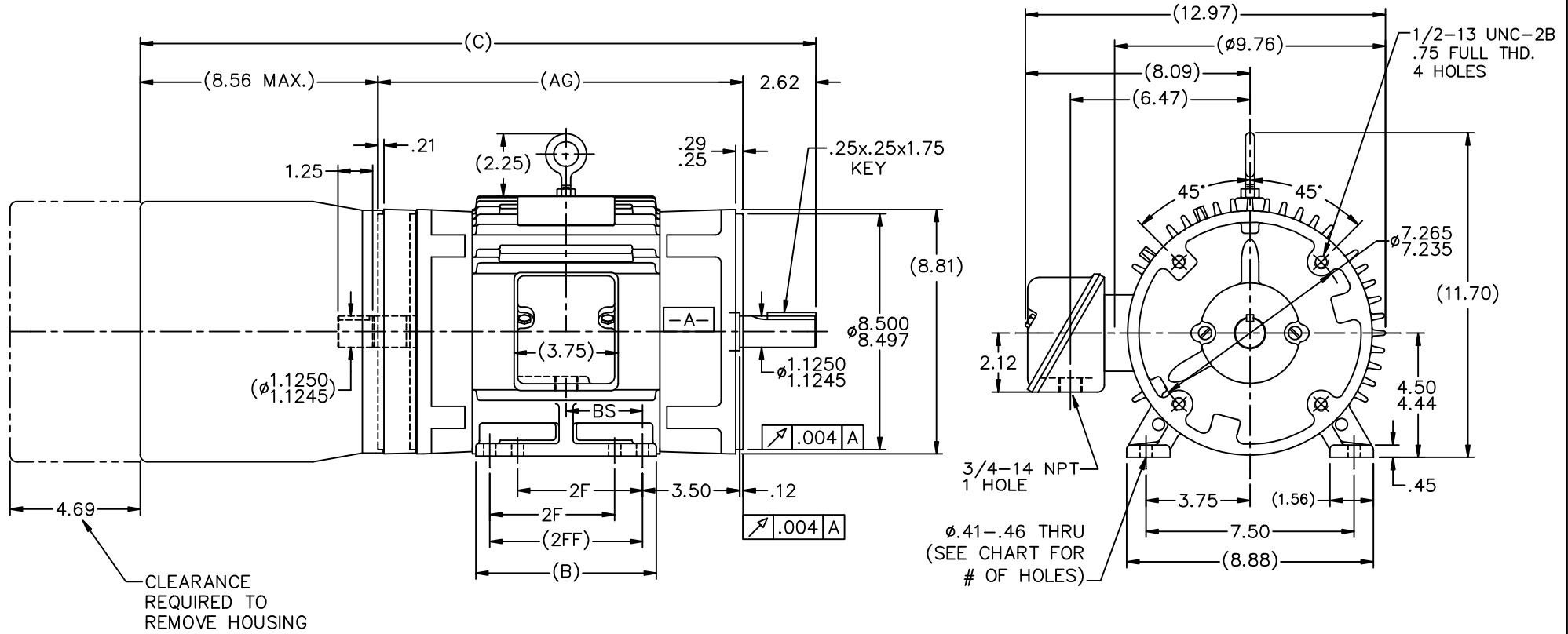
Nameplate Specifications

Phase	3	Output HP	5 Hp
Output KW	3.7 kW	Voltage	230/460 V
Speed	1750 rpm	Service Factor	1.0
Frame	184TC	Enclosure	Totally Enclosed Non Ventilated
Thermal Protection	Thermostat	Efficiency	88.5 %
Ambient Temperature	40 °C	Frequency	60 Hz
Current	13.4/6.7 A	Power Factor	79
Duty	Continuous	Insulation Class	F
Design Code	INV	KVA Code	L
Drive End Bearing Size	6207	Opp Drive End Bearing Size	6206
UL	Recognized	CSA	Y
CE	Y	IP Code	43
Number of Speeds	1		

Technical Specifications

Electrical Type	Squirrel Cage Inverter Duty	Starting Method	Inverter Only
Poles	4	Rotation	Reversible
Resistance Main	2.46 Ohms	Mounting	Rigid Base
Motor Orientation	Horizontal	Drive End Bearing	Ball
Opp Drive End Bearing	Ball	Frame Material	Cast Iron
Shaft Type	T	Overall Length	25.58 in
Frame Length	8.00 in	Shaft Diameter	1.125 in
Shaft Extension	2.62 in	Assembly/Box Mounting	F1/F2 CAPABLE
Inverter Load	CONSTANT 2000:1		
Outline Drawing	SS69132-800	Connection Drawing	EE7308T

This is an uncontrolled document once printed or downloaded and is subject to change without notice. Date Created:07/26/2024

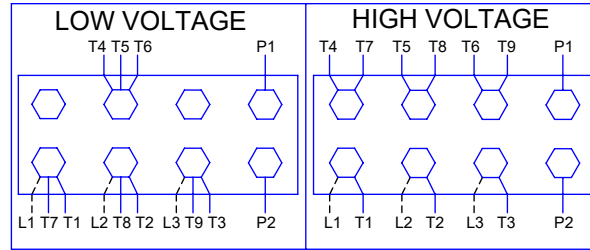
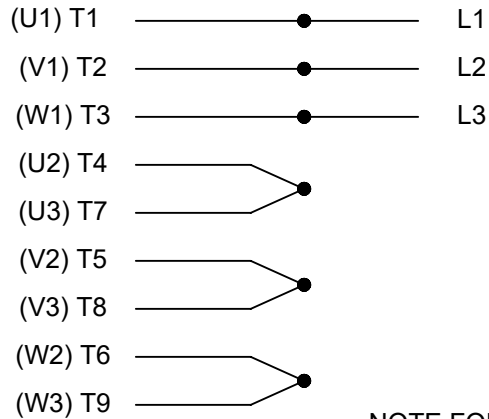


DASH	FRAME	C	B	2F	2FF	BS	AG	MOUNTING	# OF HOLES
575	182TC	23.33	5.50	4.50	-	2.25	12.15	F1 ONLY	4
675	182TC	24.33	6.50	4.50	5.50	2.75	13.15	F1 ONLY	8
675	184TC	24.33	6.50	4.50	5.50	2.75	13.15	F1 OR F2	8
800	184TC	25.58	7.75	5.50	6.75	3.38	14.40	F1 OR F2	8

- NOTES:
1. CONDUIT BOX CAN BE ROTATED IN 90° STEPS.
 2. CONDUIT BOX CAN BE MOUNTED ON OPPOSITE SIDE BY REMOVING BRACKETS AND TURNING FRAME 180°.
 3. NAMEPLATE TO BE READ FROM CONDUIT BOX SIDE OF MOTOR

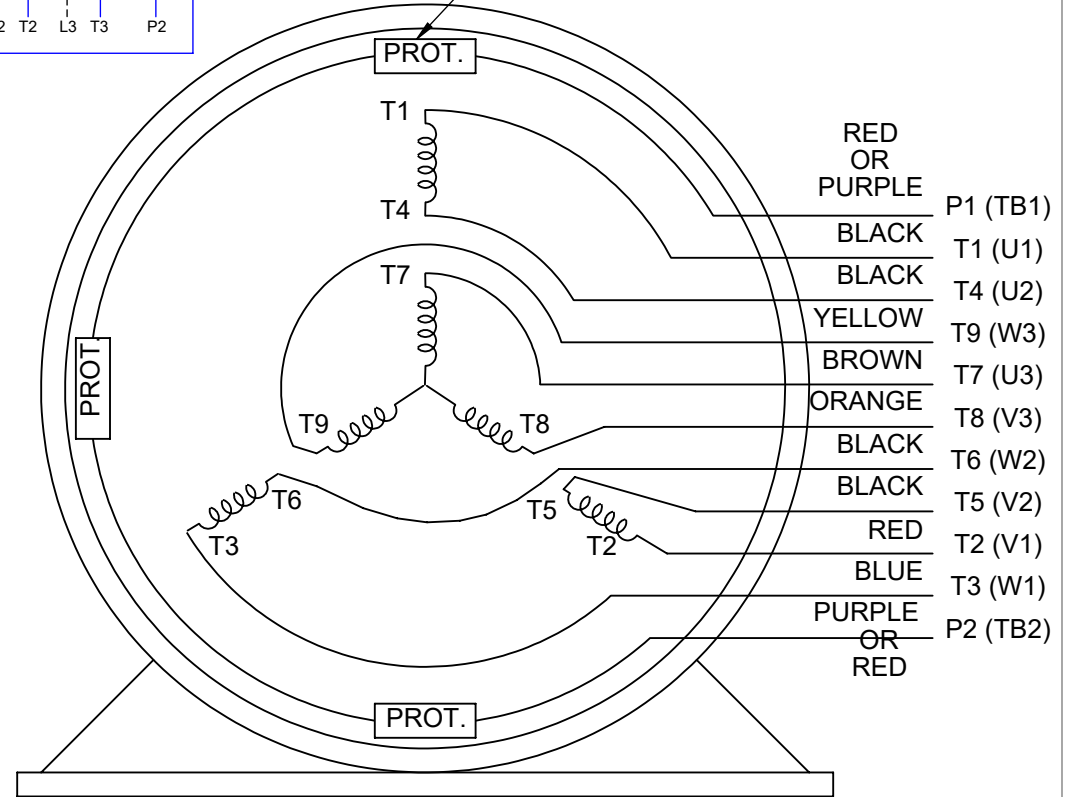
NO.	REVISION	BY & DATE	CHK	ANG	±1/2'	RFP	CAD FILE	SS69132	SIZE	DRAWING NO.	PAGE 1 OF 1	REV.
5	UPDATED DRAWING	RJW 04-24-2007	DEC.	INCHES								
4	ADD HOLE # CHART/UPDATE LFT. VIEW CN32612	RWR 03/08/2004	.X	±.1								
3	UPDATE ODE SHAFT EXTENSION MU37306	DRS 08/17/2001	ML	.XX	±.03							
2	ADDED ENCODER DIA. MU37306	DAH 07/11/2001	ML	.XXX	±.005							
1	NEW DRAWING MU37306	DAH 07/10/2001	ML	.XXXX	±.0005							
<p>THIS DRAWING IN DESIGN AND DETAIL IS OUR PROPERTY AND MUST NOT BE USED EXCEPT IN CONNECTION WITH OUR WORK. ALL RIGHTS OF DESIGN AND INVENTION ARE RESERVED. THIS IS AN ELECTRONICALLY GENERATED DOCUMENT - DO NOT SCALE THIS PRINT</p>												
<p>TOLERANCES UNLESS SPECIFIED</p>												
<p>MARATHON ELECTRIC</p>												
<p>TITLE OUTLINE - 180FR. -CAST IRON C'BOX 87000 BRAKE & PROV. FOR SL85 TACH.</p>												
<p>REVISION</p>												
<p>BY & DATE</p>												
<p>FINISH</p>												
<p>PREV</p>												
<p>DIST LB</p>												
<p>SIZE B</p>												
<p>DRAWING NO. SS69132</p>												
<p>PAGE 1 OF 1</p>												
<p>REV. 5</p>												

HIGH VOLTAGE



**THREE PHASE
DUAL VOLTAGE MOTOR**

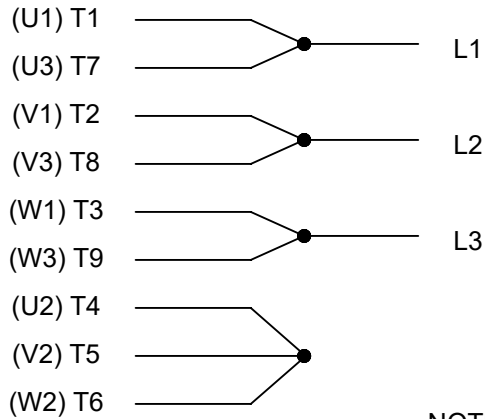
THERMO-PROTECTORS
CONNECTED IN SERIES



- RED OR PURPLE P1 (TB1)
- BLACK T1 (U1)
- BLACK T4 (U2)
- YELLOW T9 (W3)
- BROWN T7 (U3)
- ORANGE T8 (V3)
- BLACK T6 (W2)
- BLACK T5 (V2)
- RED T2 (V1)
- BLUE T3 (W1)
- PURPLE OR RED P2 (TB2)

NOTE FOR FACTORY USE ONLY:
TO SURGE TEST FOR COMMON CONNECT:
HIGH VOLT: CONNECT P1 TO T1
THEN P2 TO L1
LOW VOLT: CONNECT P1 TO T1 & T7,
THEN P2 TO L1

LOW VOLTAGE



VIEW OF TERMINAL END

NOTE: LEAD'S COLOR CAN BE YELLOW OR WHITE FOR MT2 PLANT

DRAWING REVISION T	REVISION BY ZR	DATE 01-14-2019		DRAWN BY SMC	Regal Beloit America, Inc.
ECO ECO-0159915	APPROVED BY DR	DATE 01-15-2019		DATE 05-13-1992	
ECO DESCRIPTION ADDED TERMINAL CONNECTION DIAGRAM				APPROVED BY TB	DESCRIPTION CONN DIAGRAM-INTERNAL 3 PHASE - DUAL VOLTAGE MOTOR
<small>COPYRIGHT REGAL BELOIT AMERICA, INC. ALL RIGHTS RESERVED. PROPRIETARY AND CONFIDENTIAL INFORMATION - THIS DOCUMENT IS THE PROPERTY OF REGAL BELOIT AMERICA, INC. ("OWNER") AND CONTAINS OWNER'S PROPRIETARY INFORMATION. ANY PERSON, CORPORATION OR OTHER FIRM RECEIVING IT IS DEEMED, BY RECEIVING IT, TO AGREE THAT IT, AND/OR ANY PART OF IT, SHALL NOT BE DISCLOSED TO ANY PERSON, CORPORATION OR OTHER ENTITY, DUPLICATED, AND/OR USED, EXCEPT AS EXPRESSLY APPROVED IN WRITING IN ADVANCE BY OWNER. THIS DOCUMENT SHALL BE RETURNED TO OWNER UPON REQUEST. IT MAY BE SUBJECT TO CERTAIN RESTRICTIONS UNDER APPLICABLE EXPORT CONTROL LAWS AND REGULATIONS.</small>				DATE 05-13-1992	MATERIAL
			REFERENCE EE7308/EE7300	SIZE A	DRAWING NUMBER EE7308T

CERTIFICATION DATA SHEET

Model#: 184THTS8056 AR
CONN. DIAGRAM: A-EE7308T
OUTLINE: B-SS69132-800

WINDING#: K1844217 R1 1
ASSEMBLY: F1/F2 CAPABLE

TYPICAL MOTOR PERFORMANCE DATA

HP	KW	SYNC. RPM	F.L. RPM	FRAME	ENCLOSURE	KVA CODE	DESIGN		
5	3.70	1800	1750	184TC	TENV	L	INV		
PH	Hz	VOLTS	FL AMPS	START TYPE	DUTY	INSL	S.F	AMB°C	ELEVATION
3	60	230/460	13.4/6.7	INVERTER ONLY	CONTINUOUS	F3	1.0	40	3300
FULL LOAD EFF: 88.5	3/4 LOAD EFF: 89.5	1/2 LOAD EFF: 88.5	GTD. EFF		ELEC. TYPE		NO LOAD AMPS		
FULL LOAD PF: 79	3/4 LOAD PF: 72	1/2 LOAD PF: 59	86.5		SQ CAGE INV DUTY		7 / 3.5		
F.L. TORQUE	LOCKED ROTOR AMPS	L.R. TORQUE	B.D. TORQUE	F.L. RISE°C					
15 LB-FT	114 / 57	40 LB-FT 267	61 LB-FT 407	105					
SOUND PRESSURE @ 3 FT.	SOUND POWER	ROTOR WK^2	MAX. WK^2	SAFE STALL TIME	STARTS /HOUR	APPROX. MOTOR WGT			
62 dBA	72 dBA	0.42 LB-FT^2	0 LB-FT^2	0 SEC.	0	161 LBS.			

EQUIVALENT WYE CKT.PARAMETERS (OHMS PER PHASE)

R1	R2	X1	X2	XM
1.68966	1.16802	3.25458	4.79115	77.679
RM	ZREF	XR	TD	TD0
5783.4	56.7	1.94	0.007	0.187

***** SUPPLEMENTAL INFORMATION *****

DE BRACKET TYPE	ODE BRACKET TYPE	MOUNT TYPE	ORIENTATION	SEVERE DUTY	HAZARDOUS LOCATION	DRIP COVER	SCREENS	PAINT
C-FACE	BRAKE AND ENCODER	RIGID	HORIZONTAL	FALSE	NONE	FALSE	NONE	BLUE (ENAMEL)

BEARINGS		GREASE	SHAFT TYPE	SPECIAL DE	SPECIAL ODE	SHAFT MATERIAL	FRAME MATERIAL
DE	OPE	POLYREX EM	T	NONE	NONE	1144 STRESSPROOF (C-223)	CAST IRON
BALL	BALL						
6207	6206						

THERMO-PROTECTORS				THERMISTORS	CONTROL	SPACE /n HEATERS
THERMOSTATS	PROTECTORS	WDG RTDs	BRG RTDs	NONE	FALSE	NONE VOLTS
TSTATS (N/C)	NOT	NONE	NONE			

If Inverter equals NONE, contact factory for further information

*
N
O
T
E
S
*

INVERTER TORQUE: CONSTANT 2000:1 INV. HP SPEED RANGE: 2.0 X BASE SPEED
ENCODER: PROVISIONS ONLY NONE NONE NONE NONE PPR
BRAKE: REGAL SUPPLIED AND MOUNT

NONE	
STEARNS	P/N 66378-29
87,000	NEMA 2
25 FT-LB	208-230/460-190/380 V
60/50 Hz	

DATE: 06/28/2017 06:23:00 AM
FORM 3531 REV.3 02/07/99
** Subject to change without notice.

Data Sheet

Date: 20-06-2017
Customer: _____
Attention: _____
Submitted by: FAREEDA DUDEKULA



184THTS8056

Submittal

Data @ **460 V**

Motor Load Data

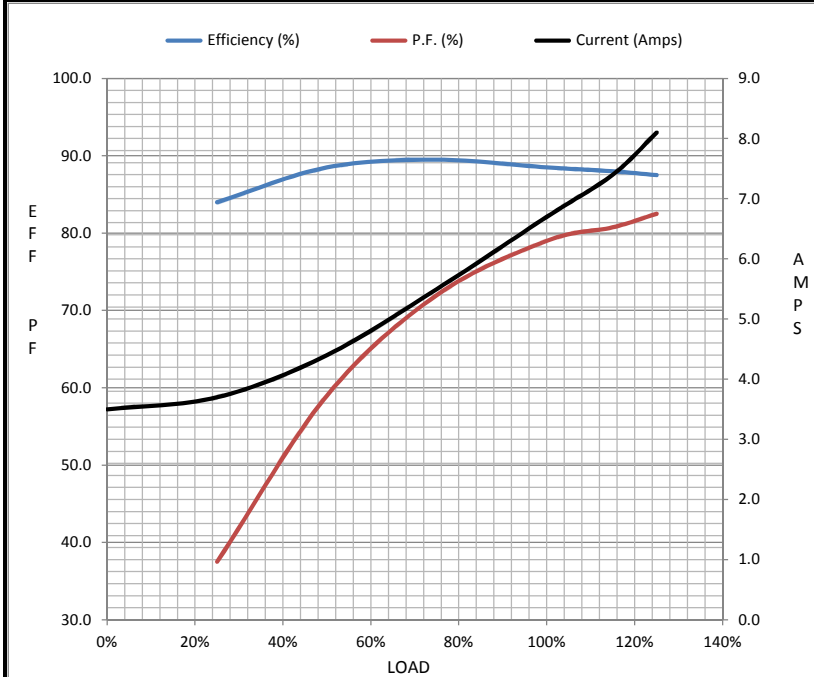
Load	0%	25%	50%	75%	100%	115%	125%	LR
Current (Amps)	3.5	3.7	4.4	5.5	6.7	7.4	8.1	57.0
Torque (ft-lb)	0.00	3.7	7.4	11.2	15.0	17.0	19.0	40.0
RPM	1800	1790	1775	1765	1750	1,746	1740	0
Efficiency (%)		84.0	88.5	89.5	88.5	88.0	87.5	
P.F. (%)	6.0	37.5	59.0	72.0	79.0	80.8	82.5	52.0

Motor Speed Data

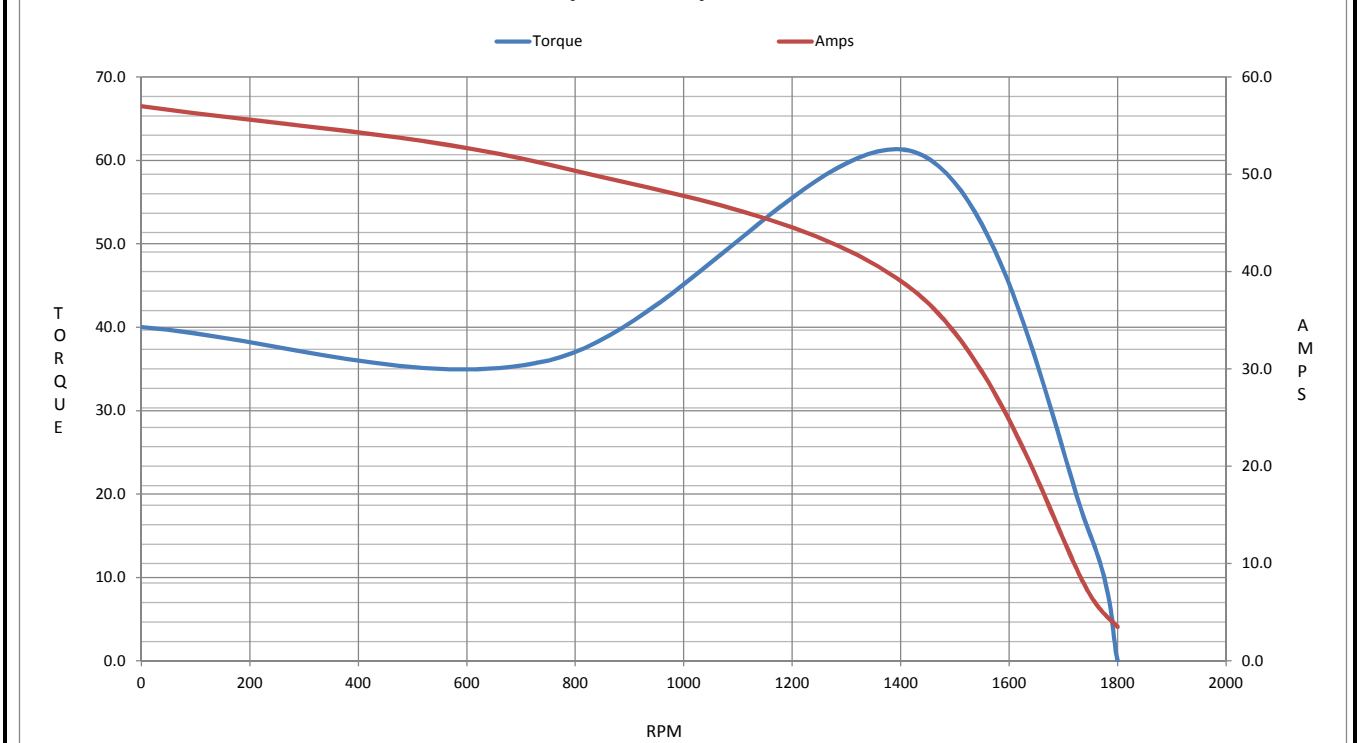
	LR	Pull-Up	BD	Rated	Idle
Speed (RPM)	0	750	1425	1750	1800
Current (Amps)	57.0	51.0	38.0	6.7	3.5
Torque (ft-lb)	40.0	36.0	61.0	15.0	0.00

Information Block

HP	5.0			
Sync. RPM	1800			
Frame	184			
Enclosure	TENV			
Construction	TTS			
Voltage	230/460 V			
Frequency	60 Hz			
Design	B			
LR Code letter	L			
Service Factor	1.0			
Temp Rise @ FL	105 ° C			
Duty	CONT			
Ambient	40 ° C			
Elevation	1,000 feet			
Rotor/Shaft wk ²	0.42 Lb-Ft ²			
Ref Wdg	K1844217 R1			
Sound Pressure @ 1M	62 dBA			
VFD Rating	CONSTANT 2000:1			
Outline Dwg	B-SS69132-800			
Conn. Diag	A-EE7308T			
Additional Specifications:				
0				
365THFS8036				
EQUIV CKT (OHMS / PHASE)				
R1	R2	X1	X2	Xm
1.6900	1.1680	3.2550	4.7910	77.6790



Speed - Torque Curve



EC Declaration of Conformity

The undersigned representing
the manufacturer:

Regal Beloit America
100 East Randolph St.
Wausau, WI 54401

and the authorized representative
established within the Community:

Marathon Electric UK
6F Thistleton Road Ind. Estate
Market Overton
Oakham, Rutland LE15 7PP UK

are committed to providing customers with products that comply with applicable regulations and international protocols to which they are subject, including the requirements of the European Parliament Directive on the Harmonization of the laws relating to electrical equipment designed for use within certain voltage limits (2014/35/EU).

Regal Beloit America declares that the following product(s), to which this declaration relates, are in conformity with the relevant sections of the EC standards listed below.

This statement supersedes any statements previously issued pertaining to the product(s) listed below and is subject to change without notice.

Model No : 184THTS8056

(Model No. may contain prefix and/or suffix characters)

Catalog No : Y989

Rework No : N/A

Directives :

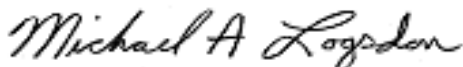
Low Voltage Directive 2014/35/EU

Harmonized Standards Used :

EN 60034-1: 2010 (IEC 60034-1: 2010)

EN 60034-5: 2001/A1:2007 (IEC 60034-5: 2000/A1:2006)

Authorized Representative:



Michael A. Logsdon
Vice President, Technology

Authorized Representative in the Community:



Julian Clark
Marketing Engineer

Created on 09/01/2022

CE 22