

# PRODUCT INFORMATION PACKET

Model No: 184THTL17038

Catalog No: Y287

Encoder Motors, TENV, 5 HP, 3 Ph, 60 Hz, 230/460 V, 1765 RPM, 184TC Frame



Regal and are trademarks of Regal Rexnord Corporation or one of its affiliated companies.  
©2022 Regal Rexnord Corporation, All Rights Reserved. MC017097E

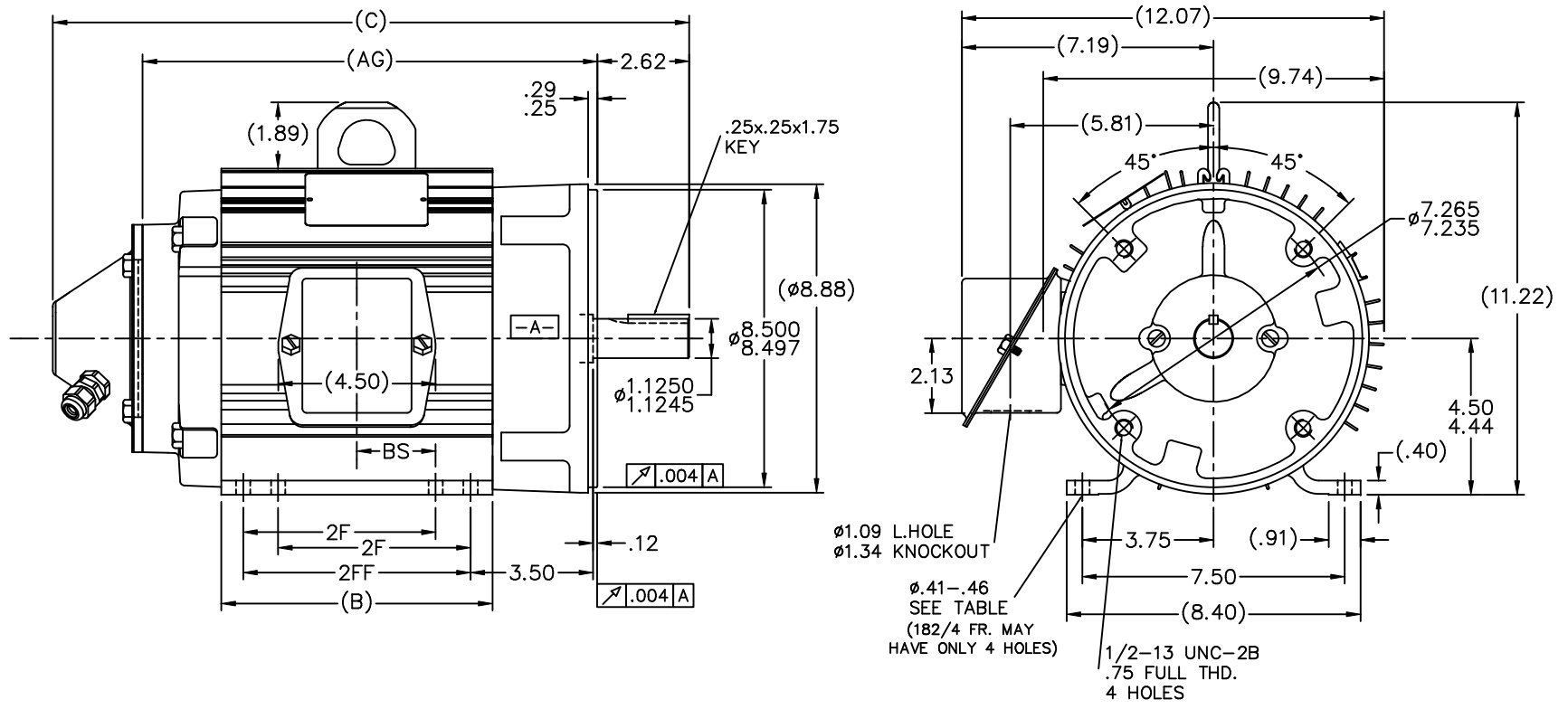
### Nameplate Specifications

Output HP	5 Hp	Output KW	3.7 kW
Frequency	60 Hz	Voltage	230/460 V
Current	14.0/7.0 A	Speed	1765 rpm
Service Factor	1	Phase	3
Efficiency	89.5 %	Power Factor	74.5
Duty	Continuous	Insulation Class	H
Design Code	INV	KVA Code	N
Frame	184TC	Enclosure	Totally Enclosed Non Ventilated
Thermal Protection	No Protection	Ambient Temperature	40 °C
Drive End Bearing Size	6207	Opp Drive End Bearing Size	6205
UL	Recognized	CSA	Y
CE	Y	IP Code	43
Number of Speeds	1		

### Technical Specifications

Electrical Type	Squirrel Cage Inverter Duty	Starting Method	Inverter Only
Poles	4	Rotation	Reversible
Resistance Main	1.88 Ohms	Mounting	Rigid Base
Motor Orientation	Horizontal	Drive End Bearing	Ball
Opp Drive End Bearing	Ball	Frame Material	Aluminum
Shaft Type	T	Overall Length	19.19 in
Frame Length	8.75 in	Shaft Diameter	1.125 in
Shaft Extension	2.62 in	Assembly/Box Mounting	F1 ONLY
Connection Drawing	A-EE7308	Outline Drawing	A-SS69914-875

This is an uncontrolled document once printed or downloaded and is subject to change without notice. Date Created:05/18/2022



NOTES:

1. CONDUIT BOX CAN BE ROTATED IN 90° STEPS.
2. CONDUIT BOX CAN BE MOUNTED ON OPPOSITE SIDE BY REMOVING BRACKETS AND TURNING FRAME 180°.
3. NAMEPLATE TO BE READ FROM CONDUIT BOX SIDE OF MOTOR.

DASH	FR.	C	B	2F	BS	AG	2FF	FOOT HOLE	MOUNTING
575	182TC	16.19	5.75	4.50	2.25	11.00	----	4	F1 OR F2
675	182TC	17.19	6.75	4.50	2.75	12.00	5.50	8	F1 OR F2
675A	184TC	17.19	6.75	5.50	2.75	12.00	----	4	F1 OR F2
720	182TC	17.64	7.20	4.50	2.98	12.45	5.96	8	F1 OR F2
720	182TC	17.64	7.20	4.50	2.98	12.45	----	4	F1 ONLY
775	184TC	18.19	7.75	5.50	3.25	13.00	----	8	F1 OR F2
875	184TC	19.19	8.75	5.50	3.75	14.00	----	8	F1 OR F2
925	184TC	19.69	9.25	5.50	4.00	14.50	----	8	F1 OR F2

NO.		REVISION	BY & DATE	CHK	ANG	FINISH	TOLERANCES UNLESS SPECIFIED		MARATHON ELECTRIC	DRAWN
							DEC.	INCHES		JJB
							.X	±.1		CHK ML 03-27-2008
							.XX	±.03		APPD GK 03-27-2008
							.XXX	±.005	TITLE	SCALE 5-16
							.XXXX	±.0005	OUTLINE - HS 20 ENCODER	REF SS68967D
									180T FR. - BB - TS - TENV	FMF ME080077, MUB8314
									MATL	PREV ME080077
							RFP	6-20-2008	CAD FILE SS69914	SIZE B DRAWING NO. PAGE 1 OF 1 REV.
							DIST	LB		SS69914

EE7308

THREE PHASE  
DUAL VOLTAGE MOTOR



VIEW OF TERMINAL END

REF.  
WINDING DIAGRAM

T8Y, T2Y, T2BL, T4BX, T2EC, T2G  
T6BZ, T2B, T6BL, T4AV, T6B, T4B

OPTIONAL CORD  
CONNECTION

L1 — WHITE  
L2 — RED  
L3 — BLACK

				TOLERANCES UNLESS SPECIFIED		DRAWN RM 11/20/1990				
		SL	AB	DEC.	INCHES	CHK ML 11/21/1990				
5	CHG TO REGAL LOGO	09/10/2015				APPD SAS 04/24/2003				
4	REVISED IEC NOTATIONS	11/15/2011	CMN	.X	±.1	SCALE 1=1				
3	ADDED IEC NOTATIONS... (U1), (V1) ETC. MU95194	5/10/2010	MJS	.XX	±.02	REF				
2	ADDED THE OPTIONAL CORD CONNECTION MU46318	04/24/2003	DRS	.XXX	±.005	FMF				
1	REDRAWN	11/20/1990		.XXXX	±.0005	PREV				
NO.	REVISION	BY & DATE	CHK	ANG	±7'30"	FINISH				
THIS DRAWING IN DESIGN AND DETAIL IS OUR PROPERTY AND MUST NOT BE USED EXCEPT IN CONNECTION WITH OUR WORK ALL RIGHTS OF DESIGN AND INVENTION ARE RESERVED THIS IS AN ELECTRONICALLY GENERATED DOCUMENT - DO NOT SCALE THIS PRINT				RFP		CAD FILE ee7308	SIZE A	DRAWING NO. EE7308	PAGE OF 5	REV. 5
				DIST	WP					



TITLE CONNECTION DIAGRAM  
3Ø - DUAL VOLTAGE MOTOR

**CERTIFICATION DATA SHEET**

Model#: 184THTL17038 AA WINDING#: K1844232 NONE 1  
 CONN. DIAGRAM: A-EE7308 ASSEMBLY: F1 ONLY  
 OUTLINE: A-SS69914-875

**TYPICAL MOTOR PERFORMANCE DATA**

HP	KW	SYNC. RPM	F.L. RPM	FRAME	ENCLOSURE	KVA CODE	DESIGN
5	3.70	1800	1765	184TC	TENV	N	INV

PH	Hz	VOLTS	FL AMPS	START TYPE	DUTY	INSL	S.F	AMB°C	ELEVATION
3	60	230/460	14/7	INVERTER ONLY	CONTINUOUS	H4	1.0	40	3300

FULL LOAD EFF: 89.5	3/4 LOAD EFF: 88.5	1/2 LOAD EFF: 86.5	GTD. EFF	ELEC. TYPE	NO LOAD AMPS
FULL LOAD PF: 74.5	3/4 LOAD PF: 67	1/2 LOAD PF: 54	87.5	SQ CAGE INV DUTY	8.4 / 4.2

F.L. TORQUE	LOCKED ROTOR AMPS	L.R. TORQUE	B.D. TORQUE	F.L. RISE°C
14.9 LB-FT	143 / 71.5	50.5 LB-FT 339	70 LB-FT 470	75

SOUND PRESSURE @ 3 FT.	SOUND POWER	ROTOR WK^2	MAX. WK^2	SAFE STALL TIME	STARTS / HOUR	APPROX. MOTOR WGT
62 dBA	72 dBA	0.52 LB-FT^2	0 LB-FT^2	0 SEC.	0	125 LBS.

**EQUIVALENT WYE CKT.PARAMETERS (OHMS PER PHASE)**

R1	R2	X1	X2	XM
1.24173	0.9072	2.5515	4.2525	64.071
RM	ZREF	XR	TD	TD0
4774.14	56.7	2.1	0.01	0.19

**\*\*\* SUPPLEMENTAL INFORMATION \*\*\***

DE BRACKET TYPE	ODE BRACKET TYPE	MOUNT TYPE	ORIENTATION	SEVERE DUTY	HAZARDOUS LOCATION	DRIP COVER	SCREENS	PAINT
C-FACE	ENCODER	RIGID	HORIZONTAL	FALSE	NONE	FALSE	NONE	BLACK (ENAMEL)

BEARINGS		GREASE	SHAFT TYPE	SPECIAL DE	SPECIAL ODE	SHAFT MATERIAL	FRAME MATERIAL
DE	OPE						
BALL	BALL	POLYREX EM	T	NONE	NONE	1144 STRESSPROOF (C-223)	ALUMINUM
6207	6205						

THERMO-PROTECTORS				THERMISTORS	CONTROL	SPACE /n HEATERS
THERMOSTATS	PROTECTORS	WDG RTDs	BRG RTDs			
NONE	NOT	NONE	NONE	NONE	FALSE	NONE VOLTS

If Inverter equals NONE, contact factory for further information

INVERTER TORQUE: CONSTANT 1000:1
INV. HP SPEED RANGE: 2.0 X BASE SPEED
ENCODER: REGAL SUPPLIED - REGAL MOUNT DYNAPAR HS20
MS CONNECTOR 1024 PPR
BRAKE: NONE NONE

\*  
N  
O  
T  
E  
S  
\*

NONE	P/N	NONE	
NONE	NONE		
NONE FT-LB		NONE V	NONE Hz

DATE: 06/28/2017 06:20:41 AM  
FORM 3531 REV.3 02/07/99  
\*\* Subject to change without notice.

Data Sheet

Date: 6/29/2017

184THTL17038

Customer: \_\_\_\_\_  
 Attention: \_\_\_\_\_  
 Submitted by: FAREEDA DUDEKULA



Submittal

Data @ 460 V

Motor Load Data

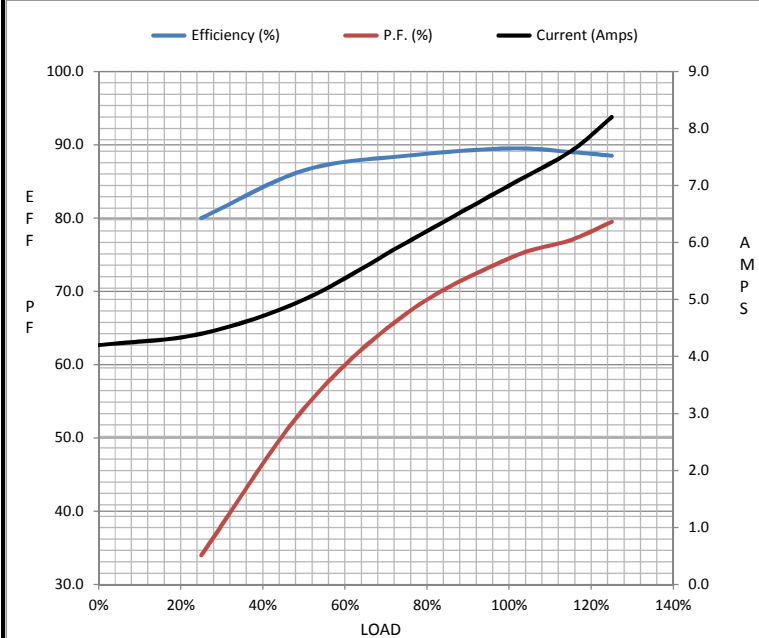
Load	0%	25%	50%	75%	100%	115%	125%	LR
Current (Amps)	4.2	4.4	5.0	6.0	7.0	7.6	8.2	71.5
Torque (ft-lb)	0.00	3.7	7.4	11.2	14.9	16.9	18.8	50.5
RPM	1800	1790	1782	1775	1765	1,761	1755	0
Efficiency (%)		80.0	86.5	88.5	89.5	89.0	88.5	
P.F. (%)	6.5	34.0	54.0	67.0	74.5	77.0	79.5	52.0

Motor Speed Data

	LR	Pull-Up	BD	Rated	Idle
Speed (RPM)	0	750	1425	1765	1800
Current (Amps)	71.5	67.0	45.5	7.0	4.2
Torque (ft-lb)	50.5	47.0	70.0	14.9	0.00

Information Block

HP	5.0			
Sync. RPM	1800			
Frame	184			
Enclosure	TENV			
Construction	TTL			
Voltage	230/460 V			
Frequency	60 Hz			
Design	A			
LR Code letter	N			
Service Factor	1.15			
Temp Rise @ FL	75 °C			
Duty	CONT			
Ambient	40 °C			
Elevation	1,000 feet			
Rotor/Shaft wk <sup>2</sup>	0.52 Lb-Ft <sup>2</sup>			
Ref Wdg	K1844232 NONE			
Sound Pressure @ 1M	62 dBA			
VFD Rating	CONSTANT 1000:1			
Outline Dwg	A-SS69914-875			
Conn. Diag	A-EE7308			
Additional Specifications:				
0				
0				
EQUIV CKT (OHMS / PHASE)				
R1	R2	X1	X2	Xm
1.2420	0.9070	2.5520	4.2530	64.0710



Speed -Torque Curve

