

PRODUCT INFORMATION PACKET

Model No: 184THFW7736

Catalog No: Y373A

Speed Ratio Motors, TEFC, 5 HP, 3 Ph, 60 Hz, 575 V, 1760 RPM, 184TC Frame



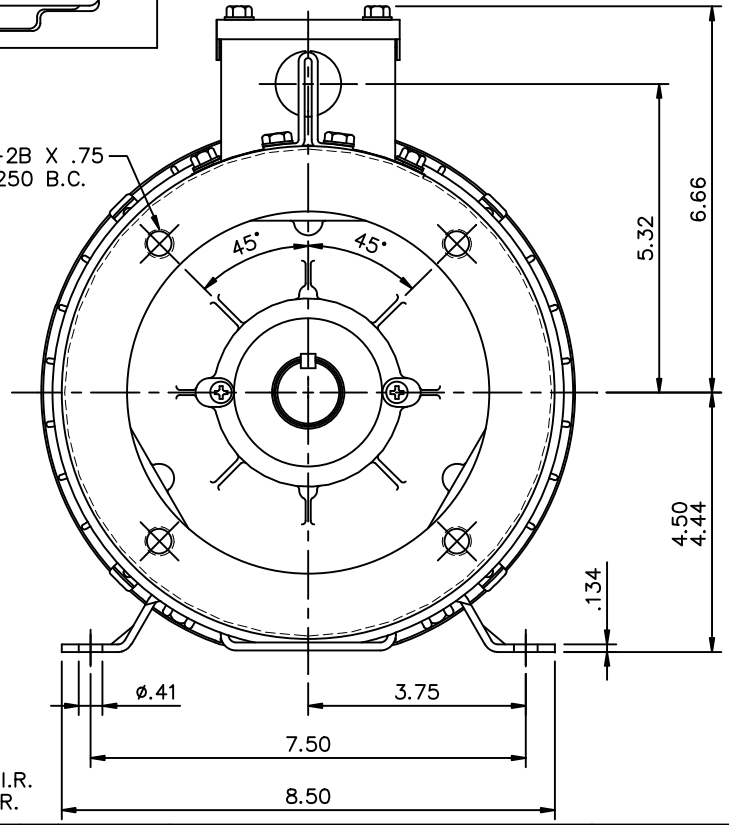
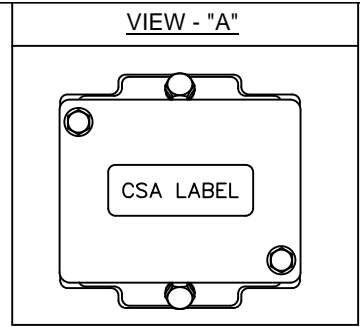
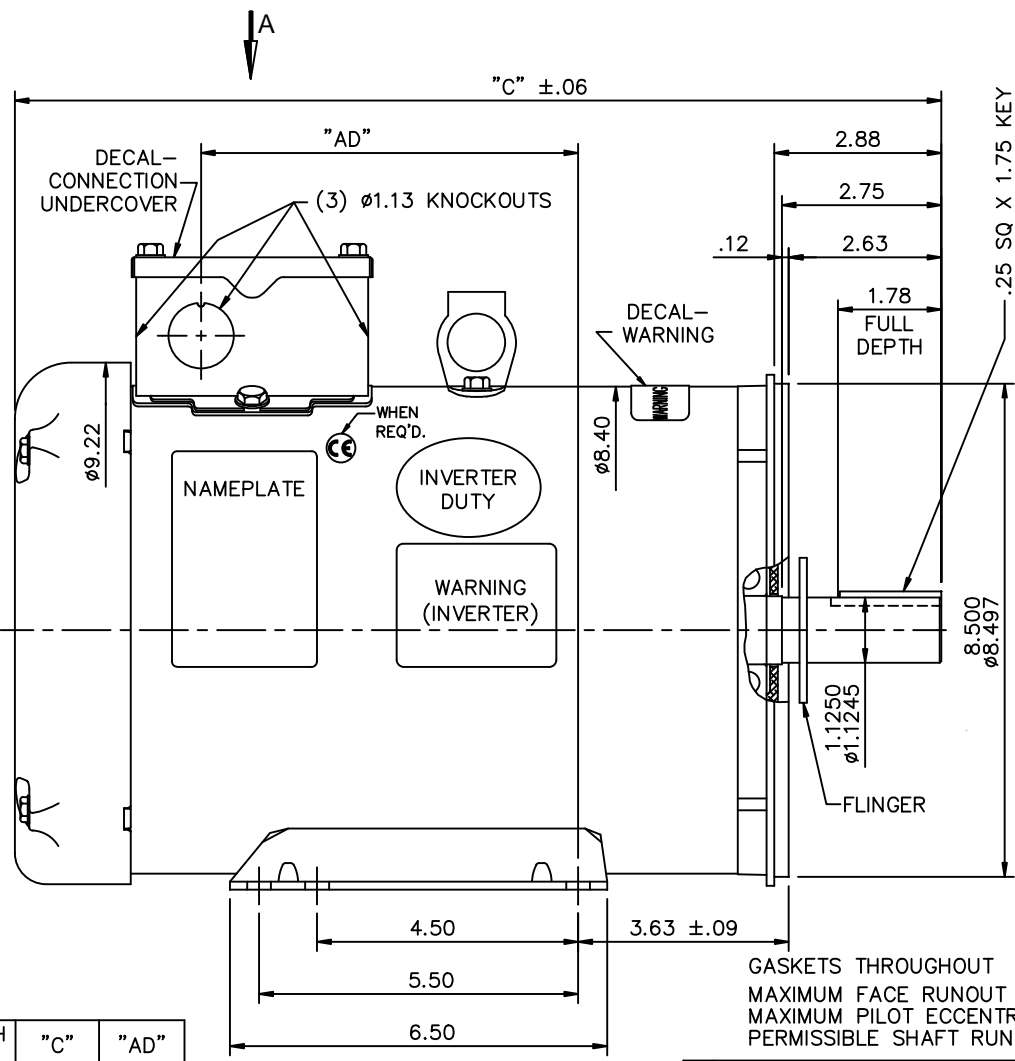
Regal and are trademarks of Regal Rexnord Corporation or one of its affiliated companies.
©2022 Regal Rexnord Corporation, All Rights Reserved. MC017097E

Nameplate Specifications

Output HP	5 Hp	Output KW	3.7 kW
Frequency	60 Hz	Voltage	575 V
Current	5.2 A	Speed	1760 rpm
Service Factor	1	Phase	3
Efficiency	87.5 %	Power Factor	81.6
Duty	Continuous	Insulation Class	H
Design Code	INV	KVA Code	J
Frame	184TC	Enclosure	Totally Enclosed Fan Cooled
Thermal Protection	No Protection	Ambient Temperature	40 °C
Drive End Bearing Size	6206	Opp Drive End Bearing Size	6205
UL	Recognized	CSA	Y
CE	Y	IP Code	43
Number of Speeds	1		

Technical Specifications

Electrical Type	Squirrel Cage Inverter Duty	Starting Method	Inverter Only
Poles	4	Rotation	Reversible
Resistance Main	3.08 Ohms	Mounting	Bolt-on Base
Motor Orientation	Horizontal	Drive End Bearing	Ball
Opp Drive End Bearing	Ball	Frame Material	Rolled Steel
Shaft Type	T	Overall Length	13.97 in
Frame Length	8.50 in	Shaft Diameter	1.125 in
Shaft Extension	2.87 in	Assembly/Box Mounting	F3
Inverter Load	CONSTANT 20:1		
Outline Drawing	035651-850	Connection Drawing	005102.01ME

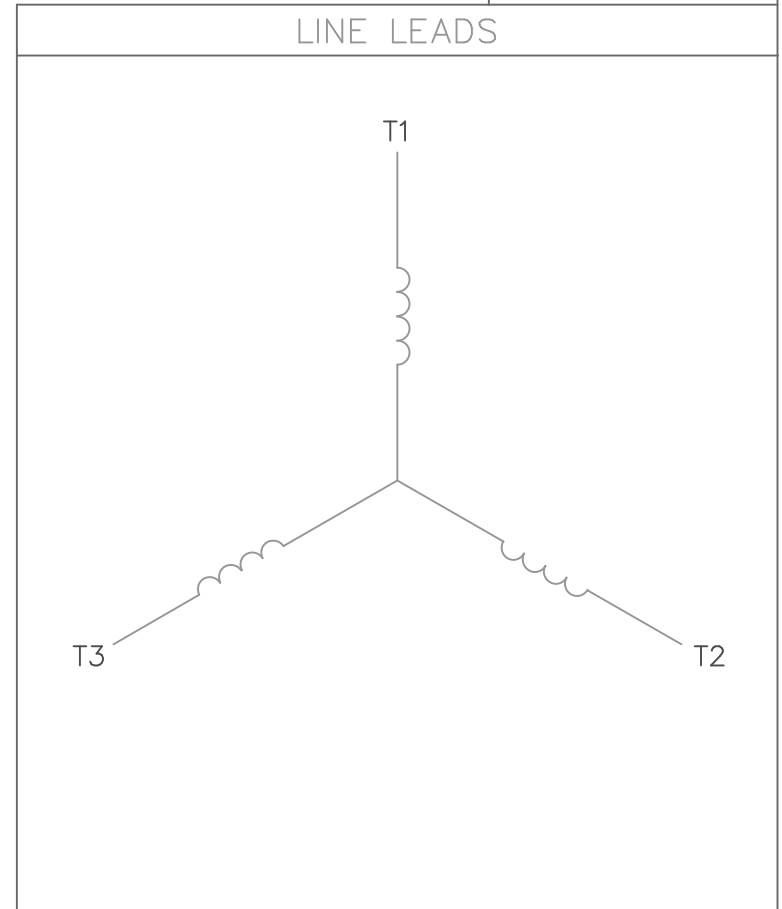
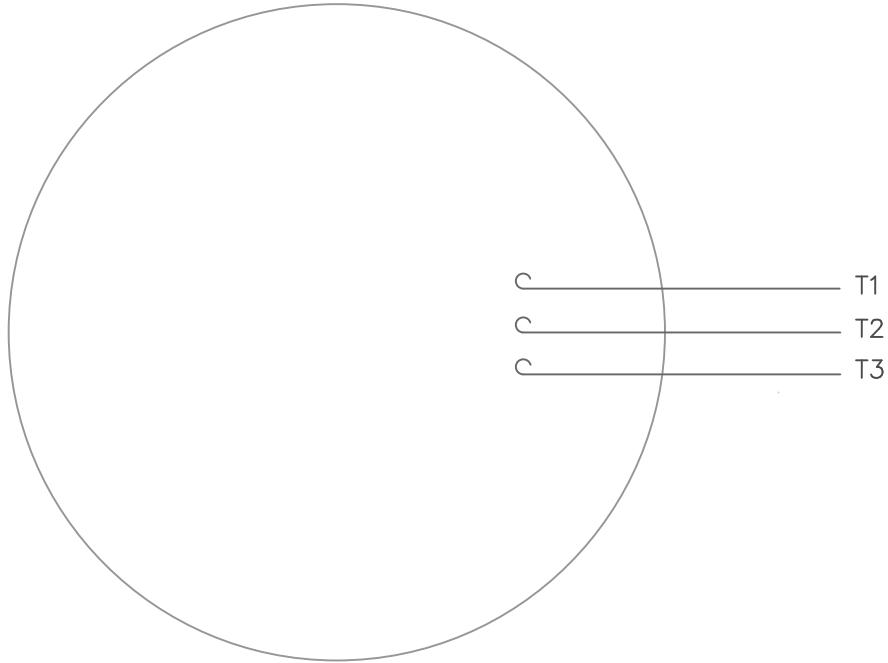


GASKETS THROUGHOUT
 MAXIMUM FACE RUNOUT TO BE .004 T.I.R.
 MAXIMUM PILOT ECCENTRICITY TO BE .004 T.I.R.
 PERMISSIBLE SHAFT RUNOUT TO BE .002 T.I.R.

DASH NO.	"C"	"AD"
850	13.97	4.50
900	14.47	5.00
950	14.97	5.50
1000	15.47	6.00
1050	15.97	6.50
1100	16.47	7.00
1150	16.97	7.50
1200	17.47	8.00

TOLERANCES UNLESS SPECIFIED		MARATHON ELECTRIC		DRAWN KVN 04/08/2008	
DEC.	INCHES	TITLE		CHK	APPD
.X	±.1	OUTLINE - 180T FRAME			
.XX	±.03	TEFC - RIGID "C"		SCALE	3=8
.XXX	±.005	MAT'L		REF	035522
.XXXX	±.0005	FINISH		FMF	1841HF7726
NO.	REVISION	BY & DATE	CHK	ANG	±1/2'
THIS DRAWING IN DESIGN AND DETAIL IS OUR PROPERTY AND MUST NOT BE USED EXCEPT IN CONNECTION WITH OUR WORK ALL RIGHTS OF DESIGN AND INVENTION ARE RESERVED THIS IS AN ELECTRONICALLY GENERATED DOCUMENT - DO NOT SCALE THIS PRINT			RFP	ANG	±1/2'
			DIST	FINISH	BOLT-ON BASE
			RFP	CAD FILE	035651
			DIST	SIZE	B
			DIST	DRAWING NO.	035651
			DIST	REV.	

VIEW FROM OUTSIDE OF MOTOR AT SWITCH END.



CONNECT LEADS AS FOLLOWS
FOR FOUR CONDUCTOR CORD ()

CORD	L1 (RED)	L2 (WHITE)	L3 (BLACK)	(GREEN)
MOTOR	T1	T2	T3	GROUND

		TOLERANCES UNLESS SPECIFIED				DRAWN RDW 5/1/02			
		DEC.	INCHES			CHK			
		.X	±.1			APPD			
		.XX	±.01			SCALE 1=1			
		.XXX	±.005			REF			
		.XXXX	±.0005	MAT'L. DECAL - 004169		FMF			
NO.	REVISION	BY & DATE	CHK	ANG	±1/2'	PREV			
THIS DRAWING IN DESIGN AND DETAIL IS OUR PROPERTY AND MUST NOT BE USED EXCEPT IN CONNECTION WITH OUR WORK ALL RIGHTS OF DESIGN AND INVENTION ARE RESERVED THIS IS AN ELECTRONICALLY GENERATED DOCUMENT - DO NOT SCALE THIS PRINT			RFP	5/1/02	CAD FILE	00510201ME	SIZE A	DRAWING NO. 005102-01ME	REV.
			DIST						

CERTIFICATION DATA SHEET

Model#: 184THFW7736 AA WINDING#: T84178 R1 5
 CONN. DIAGRAM: 005102.01ME ASSEMBLY: F3
 OUTLINE: 035651-850

TYPICAL MOTOR PERFORMANCE DATA

HP	KW	SYNC. RPM	F.L. RPM	FRAME	ENCLOSURE	KVA CODE	DESIGN			
5	3.70	1800	1760	184TC	TEFC	J	INV			
PH	Hz	VOLTS	FL AMPS	START TYPE	DUTY	INSL	S.F	AMB°C	ELEVATION	
3	60	575	5.2	INVERTER ONLY	CONTINUOUS	H3	1.0	40	3300	
FULL LOAD EFF: 87.5		3/4 LOAD EFF: 88.6		1/2 LOAD EFF: 87.7		GTD. EFF		ELEC. TYPE		NO LOAD AMPS
FULL LOAD PF: 81.6		3/4 LOAD PF: 76.7		1/2 LOAD PF: 66.2		0		SQ CAGE INV DUTY		2.2
F.L. TORQUE		LOCKED ROTOR AMPS		L.R. TORQUE		B.D. TORQUE		F.L. RISE°C		
15 LB-FT		37.9		29.2 LB-FT 195		48.6 LB-FT 324		70		
SOUND PRESSURE @ 3 FT.	SOUND POWER	ROTOR WK^2	MAX. WK^2	SAFE STALL TIME	STARTS /HOUR	APPROX. MOTOR WGT				
- dBA	- dBA	0.357 LB-FT^2	- LB-FT^2	10 SEC.	-	0 LBS.				

EQUIVALENT WYE CKT.PARAMETERS (OHMS PER PHASE)

R1	R2	X1	X2	XM
0	0	0	0	0
RM	ZREF	XR	TD	TD0
0	0	0	0	0

*** SUPPLEMENTAL INFORMATION ***

DE BRACKET TYPE	ODE BRACKET TYPE	MOUNT TYPE	ORIENTATION	SEVERE DUTY	HAZARDOUS LOCATION	DRIP COVER	SCREENS	PAINT
C-FACE	STANDARD	BOLT-ON	HORIZONTAL	FALSE	NONE	FALSE	NONE	BLACK (ENAMEL)
BEARINGS		GREASE	SHAFT TYPE	SPECIAL DE	SPECIAL ODE	SHAFT MATERIAL	FRAME MATERIAL	
DE	OPE	POLYREX EM	T	NONE	NONE	AISI 1045 (C-240)	ROLLED STEEL	
BALL	BALL							
6206	6205							
THERMO-PROTECTORS				THERMISTORS	CONTROL	SPACE /n HEATERS		
THERMOSTATS	PROTECTORS	WDG RTDs	BRG RTDs	NONE	FALSE	NONE VOLTS		
NONE	NOT	NONE	NONE					

If Inverter equals NONE, contact factory for further information

INVERTER TORQUE: CONSTANT 20:1
INV. HP SPEED RANGE: 2.0 X BASE SPEED
ENCODER: NONE
NONE NONE
NONE NONE PPR
BRAKE: NONE NONE
NONE P/N NONE

*
N
O
T
E
S
*

NONE	NONE		
NONE FT-LB	NONE V	NONE Hz	

DATE: 06/28/2017 06:20:19 AM
FORM 3531 REV.3 02/07/99
** Subject to change without notice.

Data Sheet

Date: 1/4/2019
 Customer: _____
 Attention: _____
 Submitted by: FAREEDA DUDEKULA



184THFW7736

Submital
 Data @ 575 V

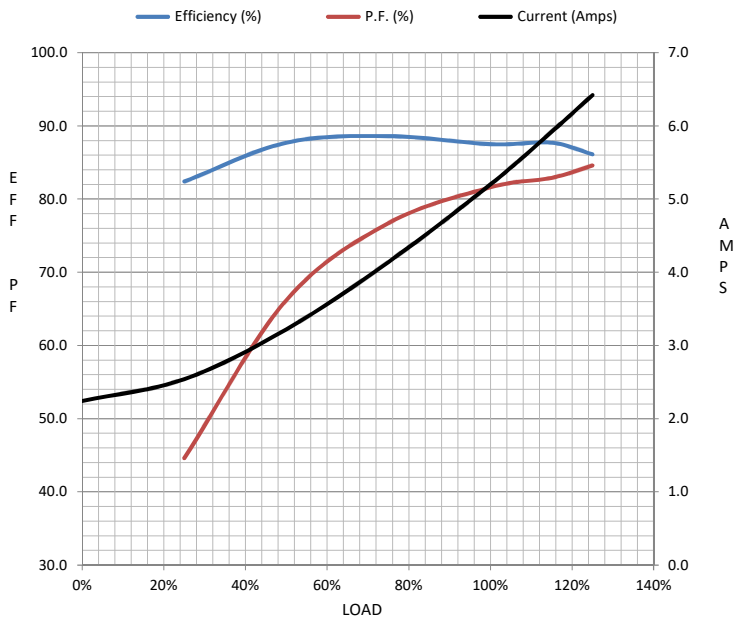
Motor Load Data

Load	0%	25%	50%	75%	100%	115%	125%	LR
Current (Amps)	2.24	2.54	3.2	4.1	5.2	5.9	6.4	37.9
Torque (ft-lb)	0.00	3.7	7.4	11.2	15.0	17.2	18.9	29.2
RPM	1800	1790	1778	1766	1760	1,754	1737	0
Efficiency (%)		82.4	87.7	88.6	87.5	87.7	86.1	
P.F. (%)	6.9	44.6	66.2	76.7	81.6	82.9	84.6	0.0

Motor Speed Data

	LR	Pull-Up	BD	Rated	Idle
Speed (RPM)	0	900	1656	1760	1800
Current (Amps)	37.9	34.9	22.8	5.2	2.24
Torque (ft-lb)	29.2	28.0	48.6	15.0	0.00

Information Block				
HP	5.0			
Sync. RPM	1800			
Frame	184			
Enclosure	TEFC			
Construction	TFR			
Voltage	575 V			
Frequency	60 Hz			
Design	INV			
LR Code letter	J			
Service Factor	1			
Temp Rise @ FL	70 °C			
Duty	CONT			
Ambient	40 °C			
Elevation	3,300 feet			
Rotor/Shaft wk ²	0.36 Lb-Ft ²			
Ref Wdg	T84178 R1			
Sound Pressure @ 1M	999 dBA			
VFD Rating	CONSTANT 20:1			
Outline Dwg	035651-850			
Conn. Diag	005102.01ME			
Additional Specifications:				
0				
0				
EQUIV CKT (OHMS / PHASE)				
R1	R2	X1	X2	Xm
0.0000	0.0000	0.0000	0.0000	0.0000



Speed - Torque Curve

