

PRODUCT INFORMATION PACKET

Model No: 184THFR7726

Catalog No: Y372

Speed Ratio Motors, TEFC, 5 HP, 3 Ph, 60 Hz, 230/460 V, 1750 RPM, 184TC Frame



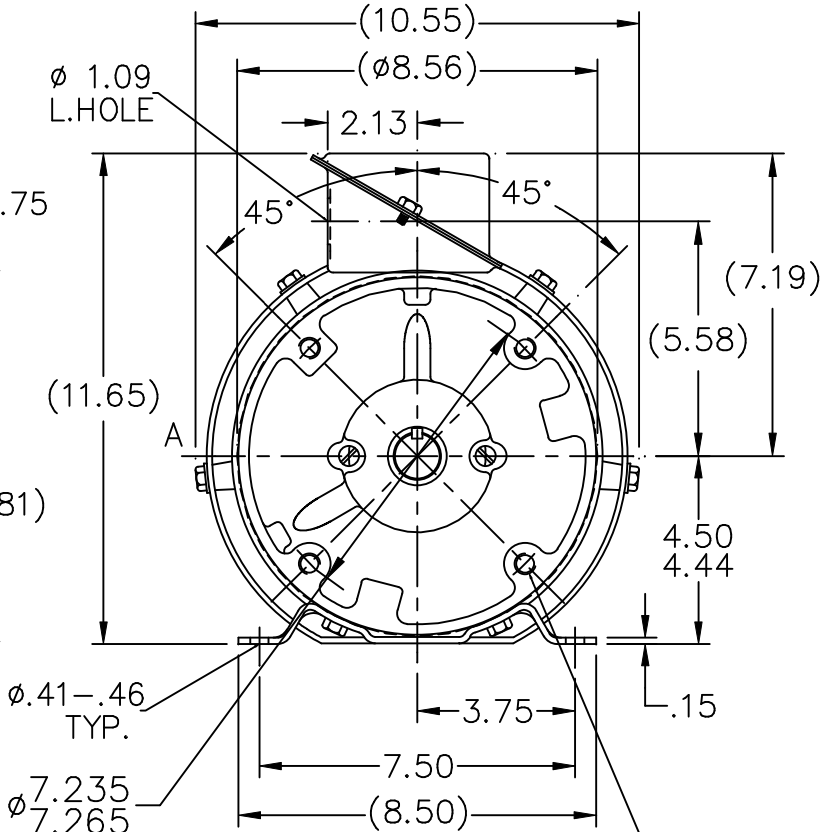
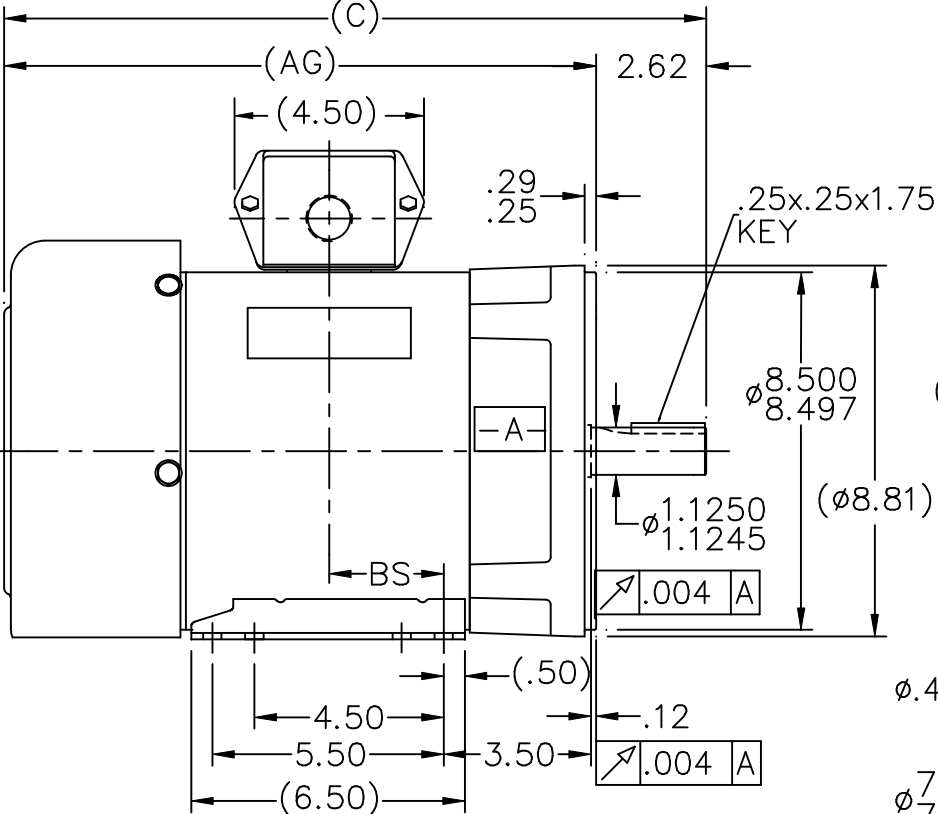
Regal and are trademarks of Regal Rexnord Corporation or one of its affiliated companies.
©2022 Regal Rexnord Corporation, All Rights Reserved. MC017097E

Nameplate Specifications

Output HP	5 Hp	Output KW	3.7 kW
Frequency	60 Hz	Voltage	230/460 V
Current	13.4/6.7 A	Speed	1750 rpm
Service Factor	1	Phase	3
Efficiency	88.5 %	Power Factor	79
Duty	Continuous	Insulation Class	H
Design Code	A	KVA Code	L
Frame	184TC	Enclosure	Totally Enclosed Fan Cooled
Thermal Protection	No Protection	Ambient Temperature	40 °C
Drive End Bearing Size	6207	Opp Drive End Bearing Size	6205
UL	Recognized	CSA	Y
CE	Y	IP Code	43
Number of Speeds	1		

Technical Specifications

Electrical Type	Squirrel Cage Inverter Duty	Starting Method	Inverter Only
Poles	4	Rotation	Reversible
Resistance Main	2.46 Ohms	Mounting	Bolt-on Base
Motor Orientation	Horizontal	Drive End Bearing	Ball
Opp Drive End Bearing	Ball	Frame Material	Rolled Steel
Shaft Type	T	Overall Length	16.69 in
Frame Length	6.75 in	Shaft Diameter	1.125 in
Shaft Extension	2.75 in	Assembly/Box Mounting	F3
Connection Drawing	A-EE7308	Outline Drawing	A-SS69219-675




DASH	FR.	C	BS	AG
575	182T	15.69	2.25	13.07
625	182T	16.19	2.50	13.57
675	182/4T	16.69	2.75	14.07
775	182/4T	17.69	3.25	15.07
875	184T	18.69	3.75	16.07
925	184T	19.19	4.00	16.57

NOTES:

1. BOX CAN BE ROTATED IN 90° STEPS.
2. NAMEPLATE READ FROM LOCATION 'A'.
3. REMOVABLE BASE

1/2-13 UNC-2B
.75 FULL THD.
4 HOLES

				TOLERANCES UNLESS SPECIFIED			DRAWN NJS 01-15-2002						
				DEC.	INCHES		CHK ML 01-15-2002						
				.X	±.1		APPD PH 01-15-2002						
				.XX	±.03		TITLE OUTLINE – STEEL C'BOX						
				.XXX	±.005	180 FR. – C'FACE – F3 MOUNT				SCALE 7=32			
1	NEW DRAWING	MU 39840	NJS 01-15-2002	.XXXX	±.0005	MAT'L.				REF			
NO.	REVISION		BY & DATE	CHK	ANG	±7'30"	FINISH				FMF		
THIS DRAWING IN DESIGN AND DETAIL IS OUR PROPERTY AND MUST NOT BE USED EXCEPT IN CONNECTION WITH OUR WORK ALL RIGHTS OF DESIGN AND INVENTION ARE RESERVED THIS IS AN ELECTRONICALLY GENERATED DOCUMENT – DO NOT SCALE THIS PRINT				RFP		CAD FILE ss69219			SIZE	DRAWING NO.	PAGE	OF	REV.
				DIST LB					A	SS69219			1

ERROR: syntaxerror
OFFENDING COMMAND: --nostringval--

STACK:

/im
-savelevel-



NO.	REVISION	BY & DATE	CHK	ANG	TOLERANCES UNLESS SPECIFIED		RFP	CAD FILE	SIZE	DRAWING NO.	PAGE	OF	REV.
					DEC.	INCHES							
5	CHG TO REGAL LOGO	SL 09/10/2015	AB		DEC.	INCHES							
4	REVISED IEC NOTATIONS	MSG 11/15/2011	CMN	.X		±.1							
3	ADDED IEC NOTATIONS... (U1), (V1) ETC. MU95194	MSG 5/10/2010	MJS	.XX		±.02							
2	ADDED THE OPTIONAL CORD CONNECTION MU46318	RDH 04/24/2003	DRS	.XXX		±.005							
1	REDRAWN	RM 11/20/1990		.XXXX		±.0005							
						±7'30"							
THIS DRAWING IN DESIGN AND DETAIL IS OUR PROPERTY AND MUST NOT BE USED EXCEPT IN CONNECTION WITH OUR WORK ALL RIGHTS OF DESIGN AND INVENTION ARE RESERVED THIS IS AN ELECTRONICALLY GENERATED DOCUMENT - DO NOT SCALE THIS PRINT								CAD FILE ee7308	A	EE7308			5