

PRODUCT INFORMATION PACKET

Model No: 184TCFR7726

Catalog No: I213

3 HP General Purpose Motor, 1 phase, 1800 RPM, 115/208-230 V, 184T Frame, TEFC
General Purpose Motors



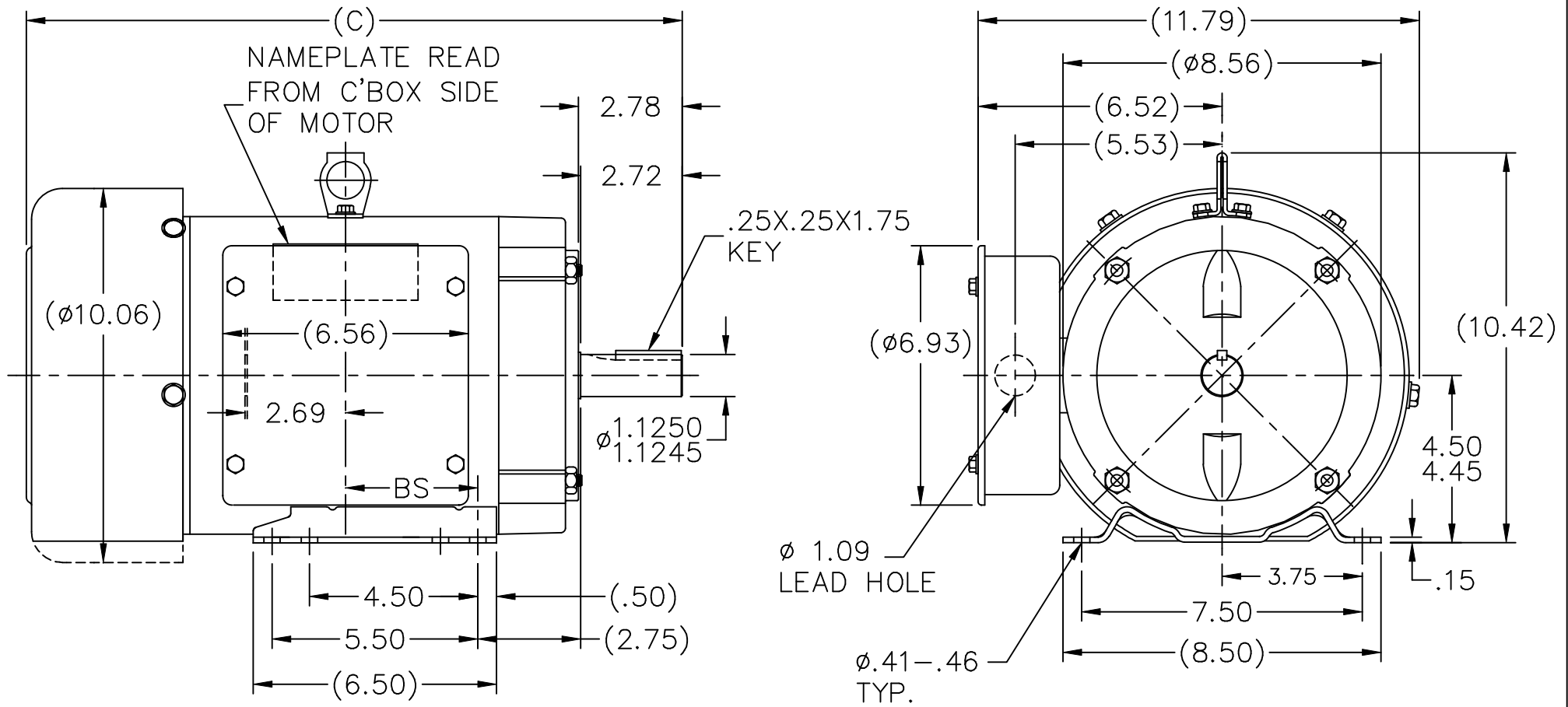
Regal and Marathon are trademarks of Regal Rexnord Corporation or one of its affiliated companies.
©2021 Regal Rexnord Corporation, All Rights Reserved. MC017097E

Nameplate Specifications

Output HP	3 Hp	Output KW	2.2 kW
Frequency	60 Hz	Voltage	115/208-230 V
Current	34.0/17.6-17.0 A	Speed	1761 rpm
Service Factor	1	Phase	1
Efficiency	77 %	Power Factor	75
Duty	Continuous	Insulation Class	B
Design Code	L	KVA Code	J
Frame	184T	Enclosure	Totally Enclosed Fan Cooled
Thermal Protection	No	Ambient Temperature	40 °C
Drive End Bearing Size	6206	Opp Drive End Bearing Size	6205
UL	Recognized	CSA	Y
CE	Y	IP Code	43
Number of Speeds	1		

Technical Specifications


Electrical Type	Capacitor Start Induction Run	Starting Method	Across The Line
Poles	4	Rotation	Selective Counterclockwise
Resistance Main	0 Ohms	Mounting	Rigid Base
Motor Orientation	Horizontal	Drive End Bearing	Ball
Opp Drive End Bearing	Ball	Frame Material	Rolled Steel
Shaft Type	T	Overall Length	18.03 in
Frame Length	8.75 in	Shaft Diameter	1.125 in
Shaft Extension	2.75 in	Assembly/Box Mounting	F1 ONLY
Outline Drawing	A-SS65660-875	Connection Drawing	A-EE7085FR

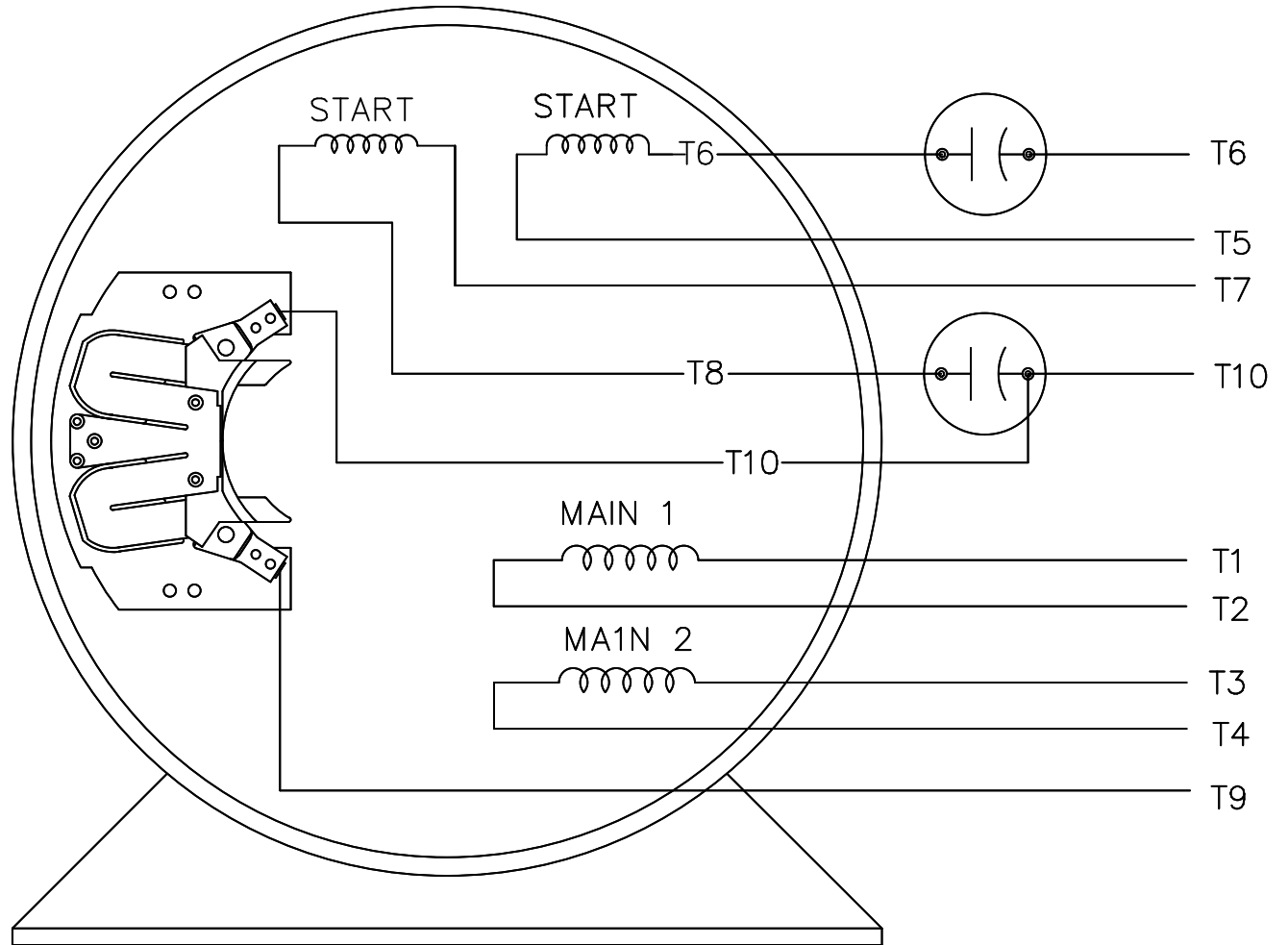
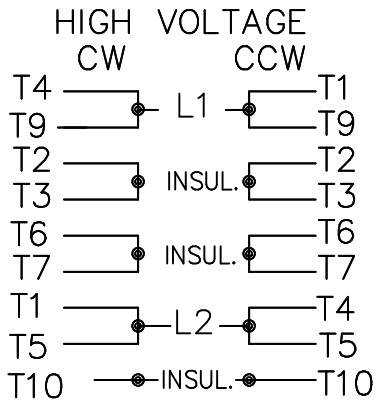
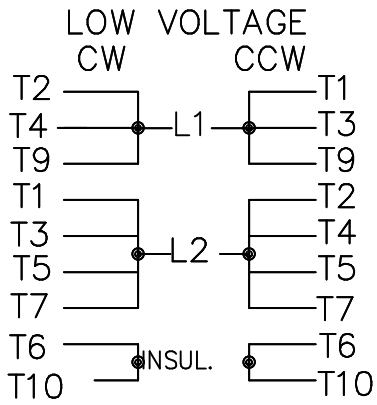


DASH	FR.	C	BS	DASH	FR.	C	BS
575	182T	15.03	2.25	675	184T	16.03	2.75
625	182T	15.53	2.50	775	184T	17.03	3.25
675	182T	16.03	2.75	825	184T	17.53	3.50
725	182T	16.53	3.00	875	184T	18.03	3.75

BOX CAN BE ROTATED IN 90° STEPS.

NO.	REVISION	BY & DATE	CHK	TOLERANCES UNLESS SPECIFIED	
				DEC.	INCHES
8	REDRAWN IN AUTOCAD	TAT 06-13-2005	ML	.X	$\pm .1$
7	ADDED LIFT LUG CN 34025	NJS 07-11-2001		.XX	$\pm .03$
6	CORRECTED 'C' DIMENSION CN 31178	TJB 06-18-2001		.XXX	$\pm .005$
5	REMOVED EYEBOLT	BLR 11-29-1995		.XXXX	$\pm .0005$
				ANG	$\pm 7'30''$

	DRAWN KL 06-20-1994	
	CHK ML 06-24-1994	APPD GK 06-24-1994
TITLE OUTLINE 180T FR. - BB - SCS - TEFC	SCALE 1=4	
MAT'L.	REF	
FINISH	FMF	
	PREV	
RFP	CAD FILE ss65660	SIZE A
DIST LB	DRAWING NO. SS65660	PAGE OF 8
		REV. 8



VIEW OF TERMINAL END

			TOLERANCES UNLESS SPECIFIED		MARATHON ELECTRIC	DRAWN GK 09-24-1986
			DEC.	INCHES		CHK ML 09-24-1986
			.X	± -	TITLE CONNECTION DIAGRAM	APPD FG 09-24-1986
			.XX	± -		SCALE 1=1
2	REDRAWN IN AUTOCAD	RWR 08-02-2004	.XXX	± -		REF
1	NEW DRAWING CN7664C	GK 11-06-1986	.XXXX	± -	MAT'L. 180-210 SWITCH	FMF
NO.	REVISION	BY & DATE	CHK	ANG	FINISH	PREV
THIS DRAWING IN DESIGN AND DETAIL IS OUR PROPERTY AND MUST NOT BE USED EXCEPT IN CONNECTION WITH OUR WORK ALL RIGHTS OF DESIGN AND INVENTION ARE RESERVED THIS IS AN ELECTRONICALLY GENERATED DOCUMENT - DO NOT SCALE THIS PRINT			RFP	CAD FILE EE7085FR		SIZE A
			DIST LB	DRAWING NO. EE7085FR		PAGE 1 OF 1
						REV. 2