

PRODUCT INFORMATION PACKET

Model No: 184TCDW7615

Catalog No: Z305A

Crop Dryer Motor, 5 & 7 HP, 1 Ph, 60 & 60 Hz, 230 & 230 V, 3600 & 3600 RPM, 184TZ Frame, DPAO



Regal and Marathon are trademarks of Regal Rexnord Corporation or one of its affiliated companies.

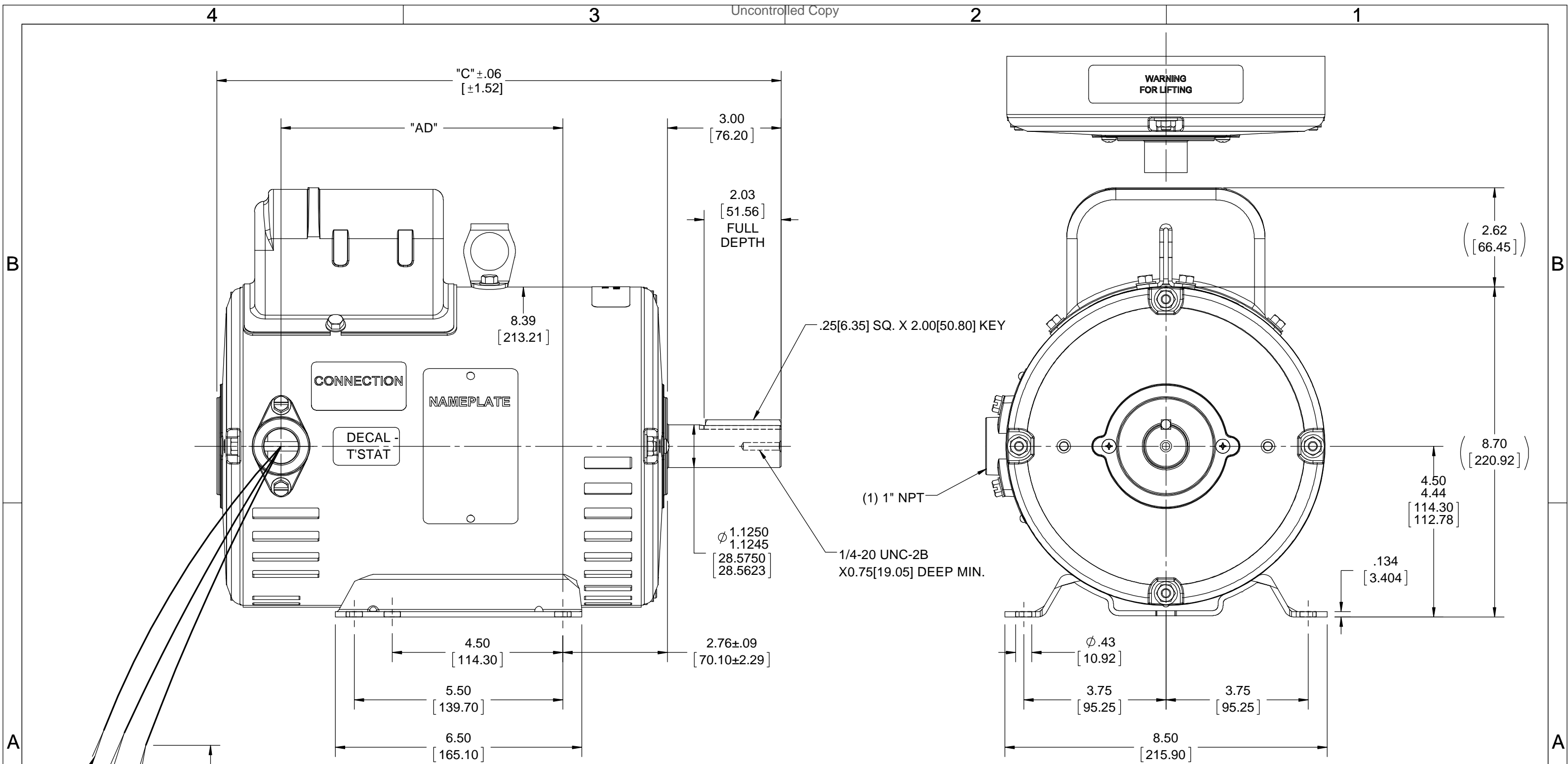
©2024 Regal Rexnord Corporation, All Rights Reserved. MC017097E

Nameplate Specifications

Phase	1	Output HP	5 & 7 Hp
Output KW	3.7 & 5.2 kW	Voltage	230 & 230 V
Speed	3535 & 3505 rpm	Service Factor	1.40 & 1.00
Frame	184TZ	Enclosure	Drip Proof Air Over
Thermal Protection	Thermostat	Efficiency	78.5 & 78.5 %
Ambient Temperature	40 °C	Frequency	60 & 60 Hz
Current	27.2 & 35 A	Power Factor	76
Duty	Continuous	Insulation Class	F
Design Code	NO DESIGN CODE	KVA Code	J
Drive End Bearing Size	6206	Opp Drive End Bearing Size	6205
UL	Recognized	CSA	Y
CE	N	IP Code	12
Number of Speeds	1		

Technical Specifications

Electrical Type	Capacitor Start Induction Run	Starting Method	Across The Line
Poles	2	Rotation	Selective Counterclockwise
Resistance Main	0 Ohms	Mounting	Rigid Base
Motor Orientation	Horizontal	Drive End Bearing	Ball
Opp Drive End Bearing	Ball	Frame Material	Rolled Steel
Shaft Type	Single Special Extension	Overall Length	15.88 in
Frame Length	11.50 in	Shaft Diameter	1.125 in
Shaft Extension	3 in	Assembly/Box Mounting	F1 ONLY
Connection Drawing	005033.09ME	Outline Drawing	035613-1250



B

B

A

A

.75 [19.05]

SEE MODEL FOR LEAD LENGTH

DASH NO.	"C"	"AD"
950	13.88[352.55]	6.43[163.32]
1000	14.38[365.25]	6.93[176.02]
1050	14.88[377.95]	7.43[188.72]
1100	15.38[390.65]	7.93[201.42]
1150	15.88[403.35]	8.43[214.12]
1200	16.38[416.05]	8.93[226.82]
1250	16.88[428.75]	9.43[239.52]

DRAWING REVISION G	REVISION BY H. ADIKE	DATE 07/03/2018
ECO ECO-0148232	APPROVED BY ST	DATE 07/03/2018
ECO DESCRIPTION OUTLINE CONVERSION PROJECT COPYRIGHT REGAL BELOIT AMERICA, INC. ALL RIGHTS RESERVED. PROPRIETARY AND CONFIDENTIAL INFORMATION - THIS DOCUMENT IS THE PROPERTY OF REGAL BELOIT AMERICA, INC. ("OWNER") AND CONTAINS OWNER'S PROPRIETARY INFORMATION. ANY PERSON, CORPORATION OR OTHER FIRM RECEIVING IT IS DEEMED, BY RECEIVING IT, TO AGREE THAT IT, AND/OR ANY PART OF IT, SHALL NOT BE DISCLOSED TO ANY PERSON, CORPORATION OR OTHER ENTITY, DUPLICATED, AND/OR USED, EXCEPT AS EXPRESSLY APPROVED IN WRITING IN ADVANCE BY OWNER. THIS DOCUMENT SHALL BE RETURNED TO OWNER UPON REQUEST. IT MAY BE SUBJECT TO CERTAIN RESTRICTIONS UNDER APPLICABLE EXPORT CONTROL LAWS AND REGULATIONS.		

TOLERANCES UNLESS OTHERWISE SPECIFIED:
 DEC. INCH mm ANGLE
 .X ±0.1 [±2.5] ±0.5°
 .XX ±0.03 [±0.76]
 .XXX ±0.005 [±0.127]
 .XXXX ±0.0005 [±0.0127]
 REMOVE BURRS & BREAK SHARP EDGES: .003/.015 [0.076/.381] X 45°
 CORNER FILLETS: R.02 [0.51]
 MACHINED SURFACES: 125 3.2 INCH mm
 mm SHOWN IN [BRACKETS]

NOTES:
 1. GASKETS THROUGHOUT

DRAWN BY KVN	Regal Beloit America, Inc.
DATE 01/23/2007	
APPROVED BY	DESCRIPTION OUTLINE 184T FRAME DRIP PROOF - RIGID MOUNT
DATE	MATERIAL
REFERENCE	PROCESS/FINISH
THIRD ANGLE PROJECTION	SIZE B
	DRAWING NUMBER 035613
	SHEET 1 OF 1

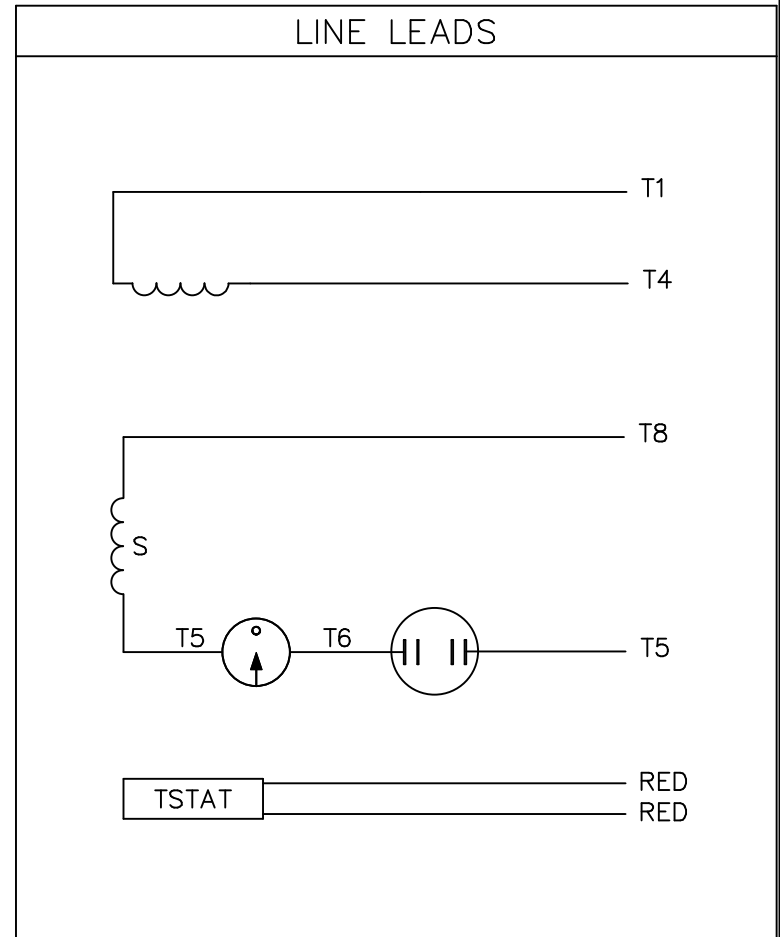
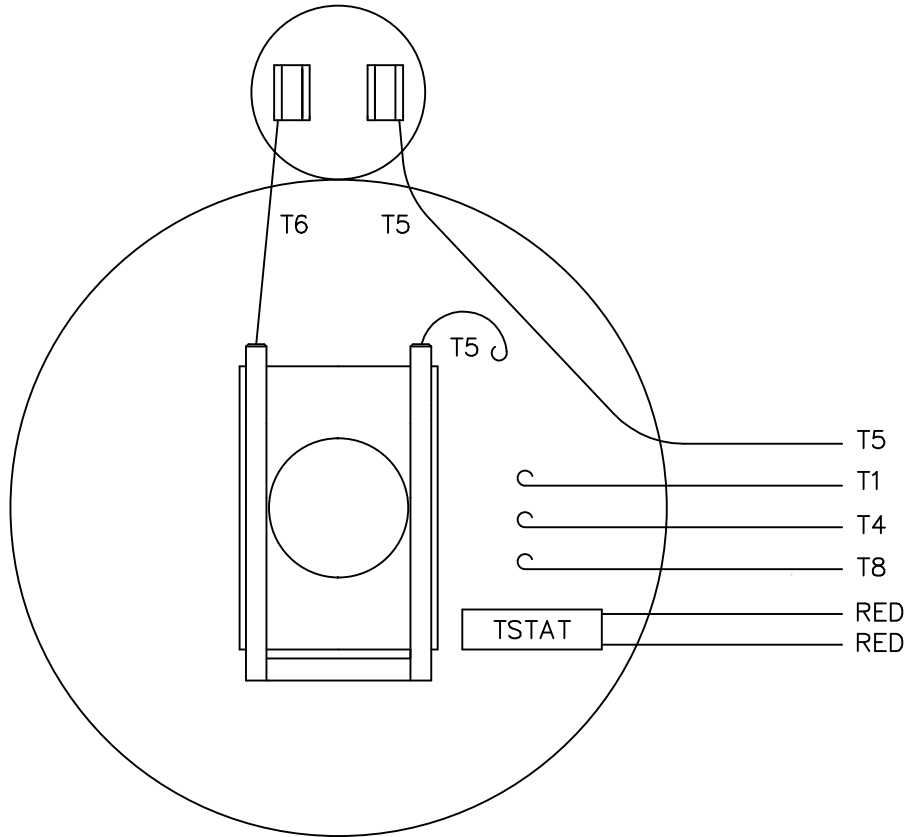
4

3

2

1

VIEW FROM OUTSIDE OF MOTOR AT SWITCH END.



ROTATION FACING LEAD END	L1	L2
C.C.W.	T1, T8	T4, T5
C.W.	T1, T5	T4, T8

				TOLERANCES UNLESS SPECIFIED		MARATHON ELECTRIC		DRAWN YS 01/23/08		
				DEC.	INCHES			CHK		
				.X	±.1			APPD		
				.XX	±.01			SCALE 1=1		
				.XXX	±.005			REF		
				.XXXX	±.0005	MAT'L. DECAL - 004018 & 080582		FMF 184TCDW7615		
NO.	REVISION	BY & DATE	CHK	ANG	±1/2"	FINISH		PREV		
THIS DRAWING IN DESIGN AND DETAIL IS OUR PROPERTY AND MUST NOT BE USED EXCEPT IN CONNECTION WITH OUR WORK ALL RIGHTS OF DESIGN AND INVENTION ARE RESERVED THIS IS AN ELECTRONICALLY GENERATED DOCUMENT - DO NOT SCALE THIS PRINT				RFP	CAD FILE 00503309ME		SIZE A	DRAWING NO. 00503309ME		REV.
				DIST						

CERTIFICATION DATA SHEET

Model#: 184TCDW7615 AA WINDING#: C8213 R1 2
 CONN. DIAGRAM: 005033.09ME ASSEMBLY: F1 ONLY
 OUTLINE: 035613-1150

TYPICAL MOTOR PERFORMANCE DATA

HP	KW	SYNC. RPM	F.L. RPM	FRAME	ENCLOSURE	KVA CODE	DESIGN
5&7	3.70&5.20	3600	3535&3505	184TZ	DPAO	J	NO DESIGN CODE

PH	Hz	VOLTS	FL AMPS	START TYPE	DUTY	INSL	S.F	AMB°C	ELEVATION
1	60/60	230#230	27.2&35	ACROSS THE LINE	CONTINUOUS	F4	1.4/1.0	40	3300

FULL LOAD EFF: 78.5&78.5	3/4 LOAD EFF: 78.3	1/2 LOAD EFF: 74.8	GTD. EFF	ELEC. TYPE	NO LOAD AMPS
FULL LOAD PF: 76&82.5	3/4 LOAD PF: 77.2	1/2 LOAD PF: 65.9	0	CAP START IND RUN	17.4

F.L. TORQUE	LOCKED ROTOR AMPS	L.R. TORQUE	B.D. TORQUE	F.L. RISE°C
7.5 LB-FT	238	24.5 LB-FT 233	25.8 LB-FT 246	0

SOUND PRESSURE @ 3 FT.	SOUND POWER	ROTOR WK^2	MAX. WK^2	SAFE STALL TIME	STARTS /HOUR	APPROX. MOTOR WGT
71 dBA	81 dBA	0 LB-FT^2	- LB-FT^2	10 SEC.	-	0 LBS.

***** SUPPLEMENTAL INFORMATION *****

DE BRACKET TYPE	ODE BRACKET TYPE	MOUNT TYPE	ORIENTATION	SEVERE DUTY	HAZARDOUS LOCATION	DRIP COVER	SCREENS	PAINT
STANDARD	STANDARD	RIGID	HORIZONTAL	FALSE	NONE	FALSE	NONE	BLUE (ENAMEL)

BEARINGS		GREASE	SHAFT TYPE	SPECIAL DE	SPECIAL ODE	SHAFT MATERIAL	FRAME MATERIAL
DE	OPE						
BALL	BALL	POLYREX EM	SGL SPL EXT	1.125 x 3.00 IN SEK	NONE	AISI 1045 (C-240)	ROLLED STEEL
6206	6205						

THERMO-PROTECTORS				THERMISTORS	CONTROL	SPACE /n HEATERS
THERMOSTATS	PROTECTORS	WDG RTDs	BRG RTDs			
TSTATS (N/C)	NOT	NONE	NONE	NONE	FALSE	NONE VOLTS

If Inverter equals NONE, contact factory for further information

* N O T E S *	INVERTER TORQUE: NONE
	INV. HP SPEED RANGE: NONE
	ENCODER: NONE NONE NONE NONE NONE PPR
BRAKE: NONE NONE NONE P/N NONE NONE NONE NONE FT-LB NONE V NONE Hz	

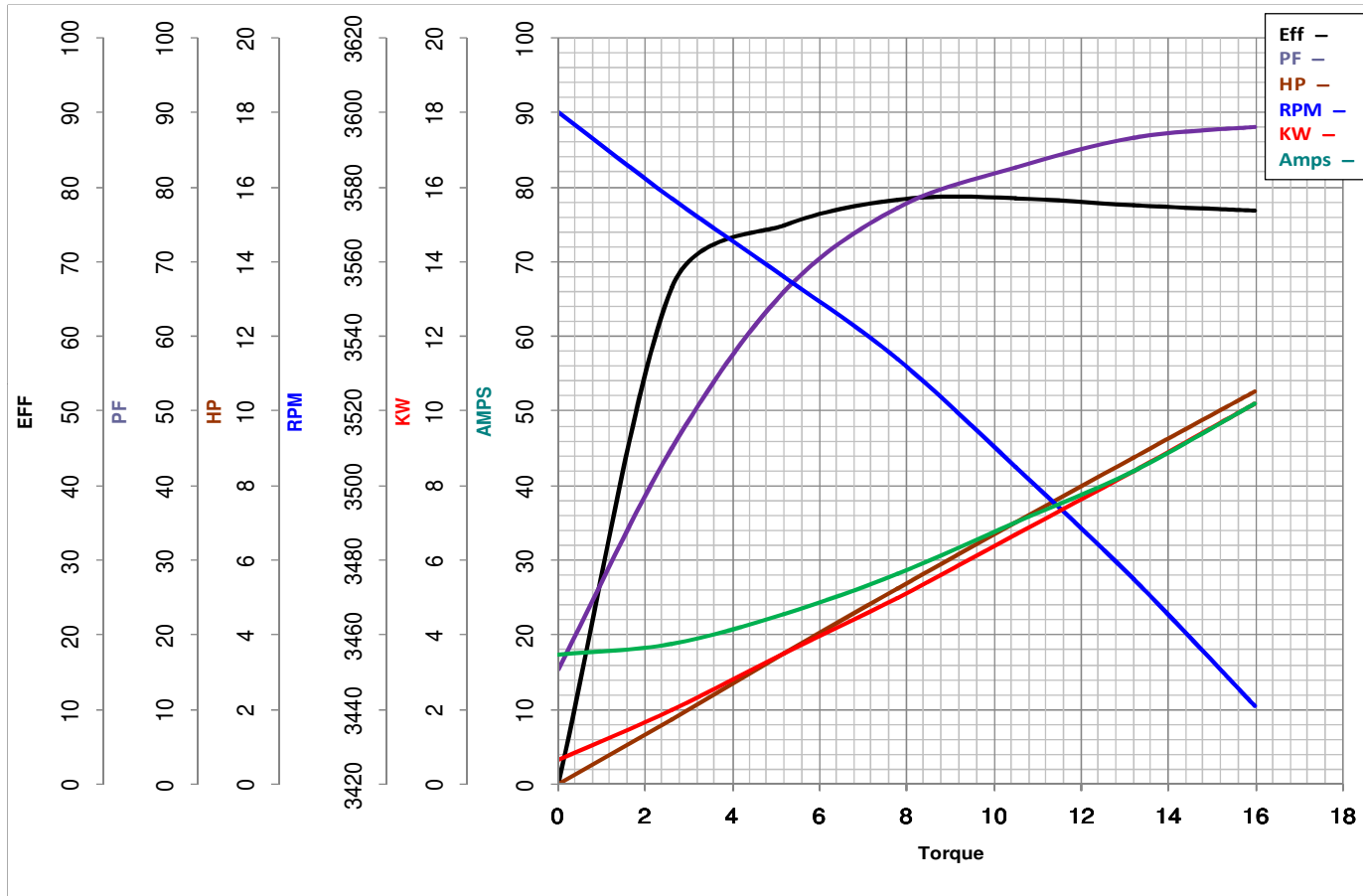
DATE: 06/28/2017 06:16:45 AM
 FORM 3531 REV.3 02/07/99

** Subject to change without notice.



MARATHON ELECTRIC CORPORATION
TYPICAL PERFORMANCE CURVE for AC MOTOR

Customer _____ Curve at 230 Volts HP 5&7 PHASE 1
 Model No 184TCDW7615 60 HZ
7 HP VOLTS 230&230
 Catalog No Z305A HZ 60&60 RPM 3535&3505



Torque in Lb.Ft

FL TORQUE	<u>10.5</u>	Lb.Ft	FL AMPS	<u>35</u>	
BD TORQUE	<u>25.8</u>	Lb.Ft	PU TORQUE	<u>25.8</u>	Lb.Ft
LR TORQUE	<u>24.5</u>	Lb.Ft	LR AMPS	<u>238</u>	
WINDING	C8213-2		Date	1/25/2019	