

PRODUCT INFORMATION PACKET

marathon®
Motors

Model No: 184TCDW7011

Catalog No: Z1408

5 HP General Purpose Motor, 1 phase, 3600 RPM, 230 V, 184JM Frame, ODP
General Purpose Motors



Regal and Marathon are trademarks of Regal Rexnord Corporation or one of its affiliated companies.

©2021 Regal Rexnord Corporation, All Rights Reserved. MC017097E

RegalRexnord

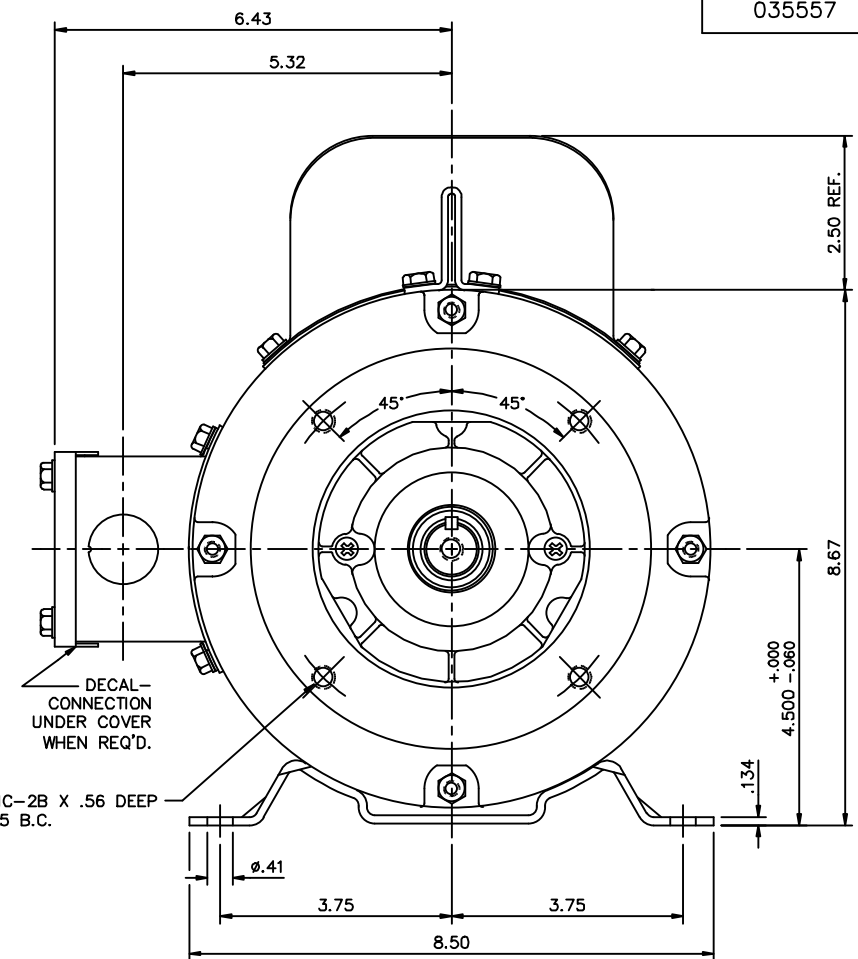
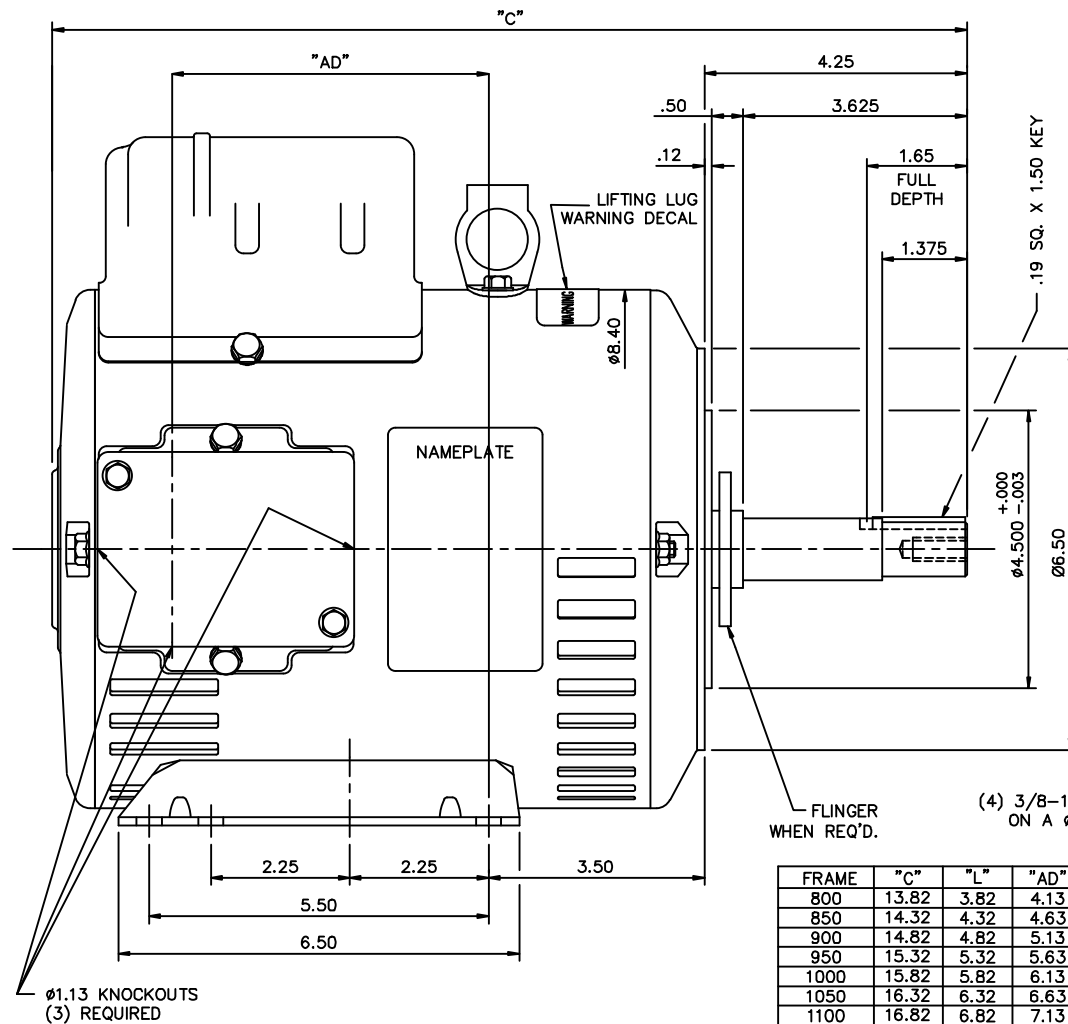
Nameplate Specifications

Output HP	5 Hp	Output KW	3.7 kW
Frequency	60 Hz	Voltage	230 V
Current	22.0 A	Speed	3500 rpm
Service Factor	1.15	Phase	1
Efficiency	80 %	Power Factor	92
Duty	Continuous	Insulation Class	F
Design Code	NO DESIGN CODE	KVA Code	H
Frame	184JM	Enclosure	Drip Proof
Thermal Protection	No	Ambient Temperature	40 °C
Drive End Bearing Size	6207	Opp Drive End Bearing Size	6205
UL	Recognized	CSA	Y
CE	Y	IP Code	22
Number of Speeds	1		

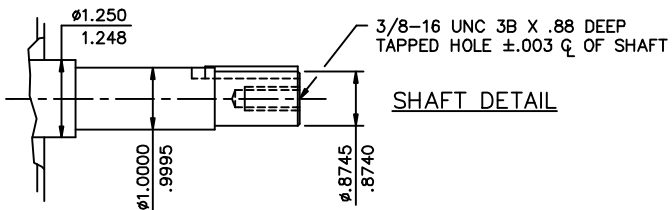
Technical Specifications


Electrical Type	Capacitor Start Capacitor Run	Starting Method	Across The Line
Poles	2	Rotation	Selective Counterclockwise
Resistance Main	0 Ohms	Mounting	Rigid Base
Motor Orientation	Horizontal	Drive End Bearing	Ball
Opp Drive End Bearing	Ball	Frame Material	Rolled Steel
Shaft Type	JM	Overall Length	16.32 in
Frame Length	10.50 in	Shaft Diameter	0.875 in
Shaft Extension	4.25 in	Assembly/Box Mounting	F1 ONLY
Connection Drawing	005018.01ME	Outline Drawing	035557-1050

This is an uncontrolled document once printed or downloaded and is subject to change without notice. Date Created:10/12/2021

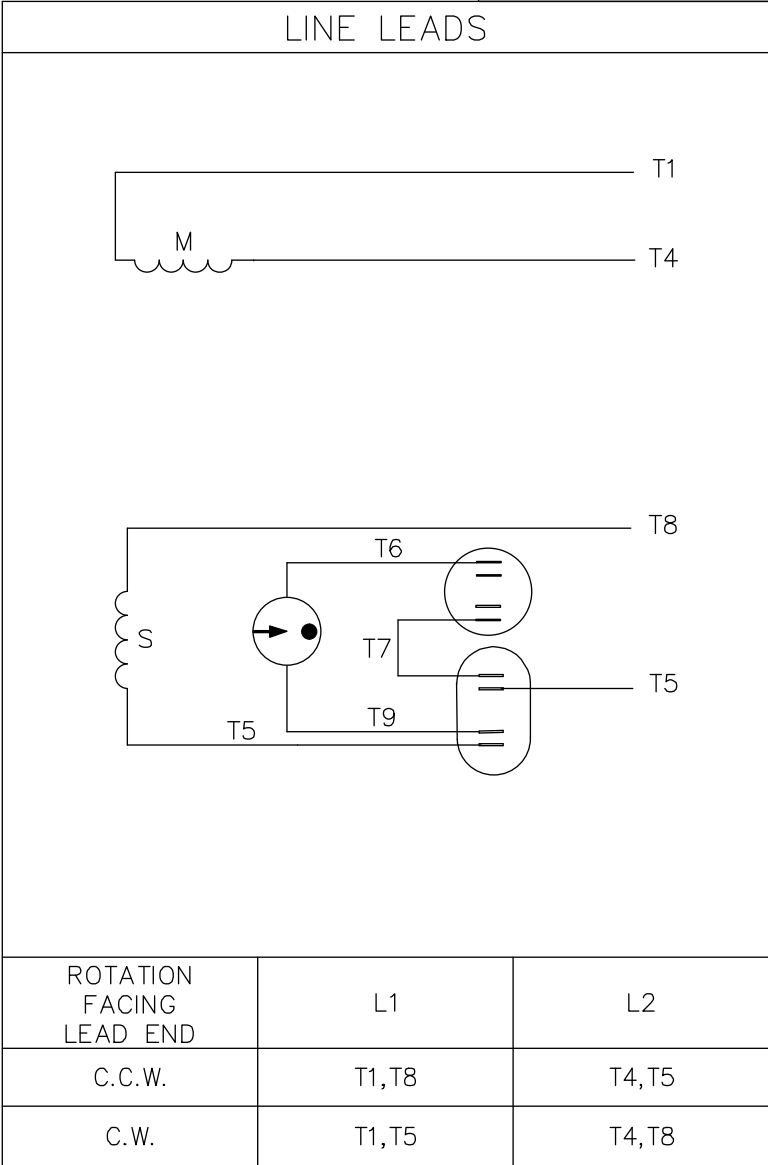
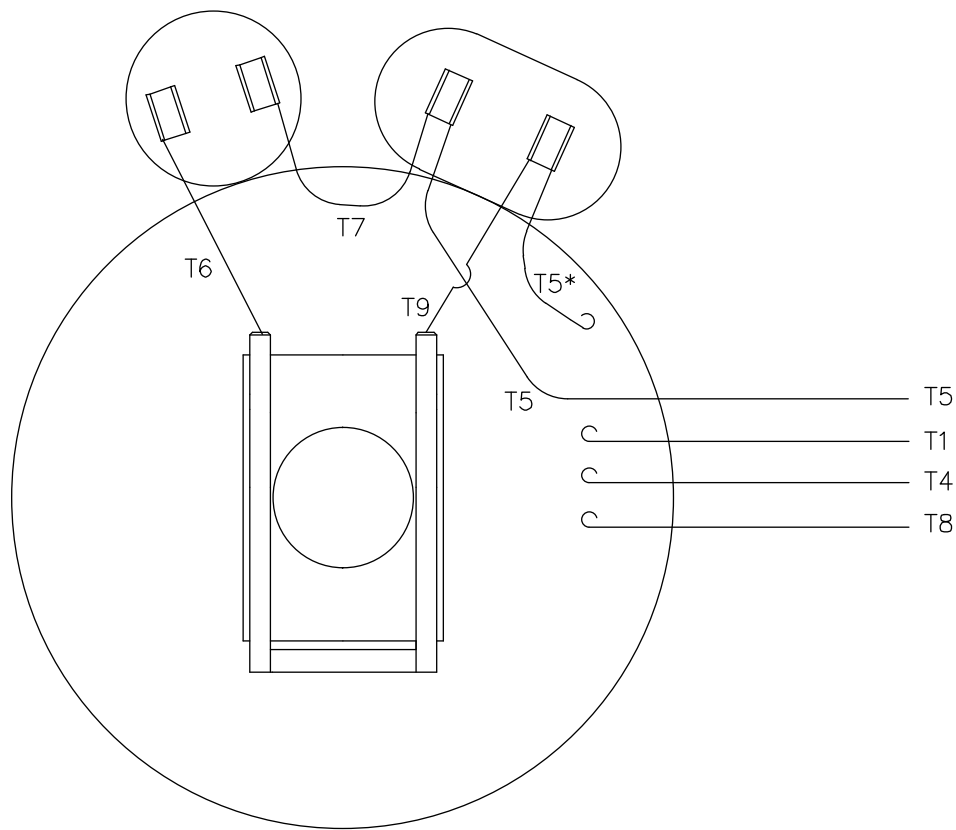


GASKETS THROUGHOUT
 MAXIMUM FACE RUNOUT TO BE .004 T.I.R.
 MAXIMUM PILOT ECCENTRICITY TO BE .004 T.I.R.
 PERMISSIBLE SHAFT RUNOUT TO BE .002 T.I.R.





						TOLERANCES UNLESS SPECIFIED		DRAWN	VV	08/30/07	
						DEC. INCHES		CHK	YS	08/30/07	
						.X ±.1		APPD			
						.XX ±.03	TITLE	OUTLINE- 180T FRAME		SCALE	1=2
02	ADDED FLINGER WHEN REQ'D ISAAC 12-2578			GWS	6/11/12	.XXX ±.005		DRIP PROOF- RIGID		REF	035472
01	SHAFT HOLE WAS 3A x .56 DEEP,WARNING NOTE ADDED			JD	05/26/11	.XXXX ±.0005	MAT'L	FMF		184TCDW7047	
NO.	REVISION			BY & DATE	CHK	ANG ±1/2"	FINISH	PREV			
THIS DRAWING IN DESIGN AND DETAIL IS OUR PROPERTY AND MUST NOT BE USED EXCEPT IN CONNECTION WITH OUR WORK ALL RIGHTS OF DESIGN AND INVENTION ARE RESERVED THIS IS AN ELECTRONICALLY GENERATED DOCUMENT - DO NOT SCALE THIS PRINT						RFP	CAD FILE	035557	SIZE	DRAWING NO.	REV.
						DIST			B	035557	02

VIEW FROM OUTSIDE OF MOTOR AT SWITCH END.



ROTATION FACING LEAD END	L1	L2
C.C.W.	T1,T8	T4,T5
C.W.	T1,T5	T4,T8

* THIS LEAD MAY BE WHITE

				TOLERANCES UNLESS SPECIFIED					DRAWN RDW 6/5/03			
				DEC.	INCHES				CHK			
				.X	±.1				APPD			
				.XX	±.01				TITLE EXTERNAL WIRING DIAGRAM TYPE "K" W/O PROTECTOR		SCALE	1=1
				.XXX	±.005						REF	005018
				.XXXX	±.0005	MAT'L. DECAL - 004018		FMF	139047			
NO.	REVISION	BY & DATE	CHK	ANG	±1/2"	FINISH			PREV			
THIS DRAWING IN DESIGN AND DETAIL IS OUR PROPERTY AND MUST NOT BE USED EXCEPT IN CONNECTION WITH OUR WORK ALL RIGHTS OF DESIGN AND INVENTION ARE RESERVED THIS IS AN ELECTRONICALLY GENERATED DOCUMENT - DO NOT SCALE THIS PRINT			RFP		6/5/03	CAD FILE		00501801ME	SIZE	DRAWING NO.	REV.	
			DIST					A	005018-01ME			