

# PRODUCT INFORMATION PACKET

**marathon®**  
Motors

Model No: 184TCDR7001

Catalog No: I104

5 HP General Purpose Motor, 1 phase, 3600 RPM, 208-230 V, 184T Frame, ODP  
General Purpose Motors



Regal and Marathon are trademarks of Regal Rexnord Corporation or one of its affiliated companies.

©2021 Regal Rexnord Corporation, All Rights Reserved. MC017097E

**RegalRexnord**

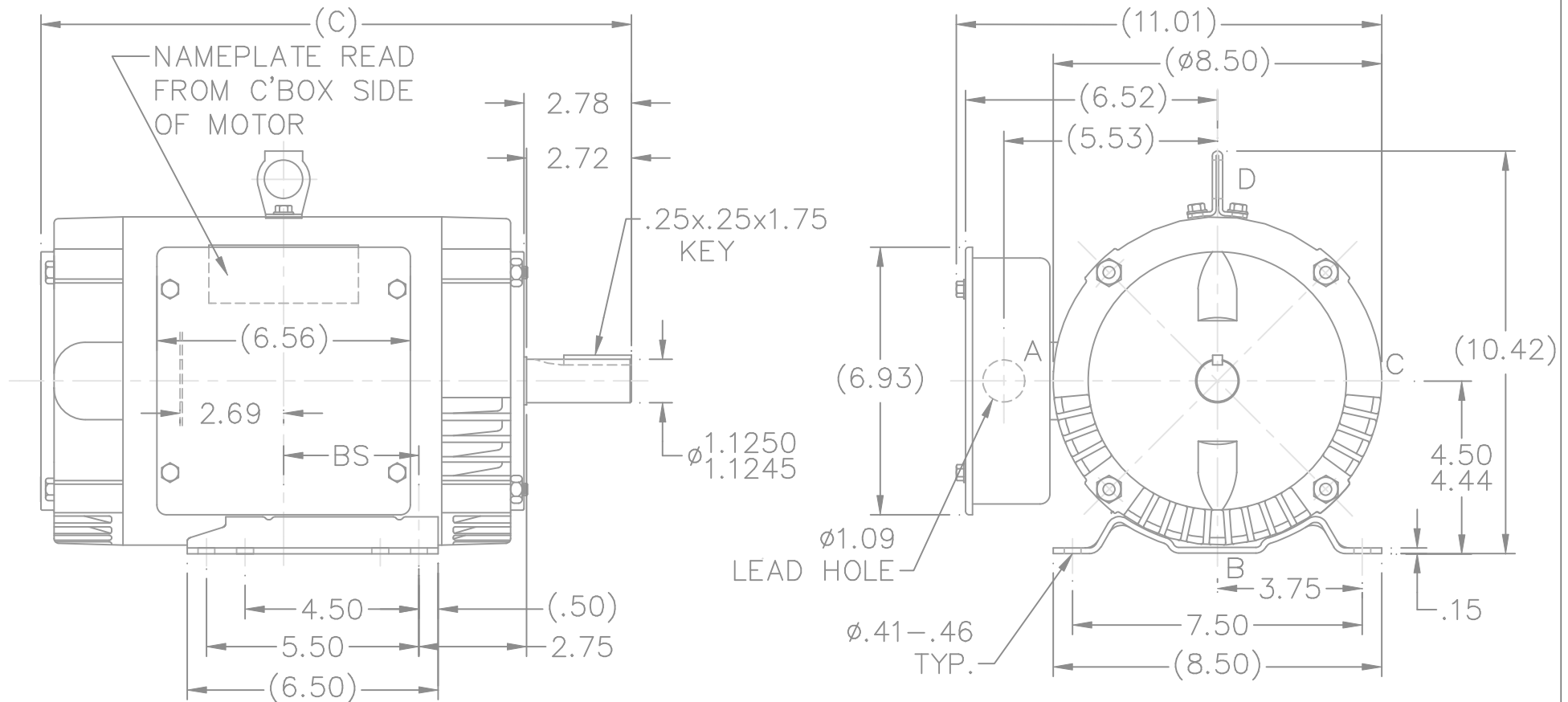
**Nameplate Specifications**

Output HP	5 Hp	Output KW	3.7 kW
Frequency	60 Hz	Voltage	208-230 V
Current	27.0-24.0-24.0 A	Speed	3510 rpm
Service Factor	1.15	Phase	1
Efficiency	80 %	Power Factor	82.3
Duty	Continuous	Insulation Class	B
Design Code	NO DESIGN CODE	KVA Code	H
Frame	184T	Enclosure	Drip Proof
Thermal Protection	No	Ambient Temperature	40 °C
Drive End Bearing Size	6206	Opp Drive End Bearing Size	6203
UL	Recognized	CSA	Y
CE	Y	IP Code	22
Number of Speeds	1		

**Technical Specifications**

Electrical Type	Capacitor Start Induction Run	Starting Method	Across The Line
Poles	2	Rotation	Selective Counterclockwise
Resistance Main	0 Ohms	Mounting	Rigid Base
Motor Orientation	Horizontal	Drive End Bearing	Ball
Opp Drive End Bearing	Ball	Frame Material	Rolled Steel
Shaft Type	T	Overall Length	14.79 in
Frame Length	7.75 in	Shaft Diameter	1.125 in
Shaft Extension	2.75 in	Assembly/Box Mounting	F1 ONLY
Connection Drawing	A-EE7090JL	Outline Drawing	A-SS65665-775

This is an uncontrolled document once printed or downloaded and is subject to change without notice. Date Created:10/12/2021



DASH	FR.	C	BS		DASH	FR.	C	BS	
575	182T	12.79	2.25		675	184T	13.79	2.75	
625	182T	13.29	2.50		725	184T	14.29	3.00	
675	182T	13.79	2.75		775	184T	14.79	3.25	
725	182T	14.29	3.00		825	184T	15.29	3.50	
775	182T	14.79	3.25		875	184T	15.79	3.75	
825	182T	15.29	3.50		925	184T	16.29	4.00	

BOX CAN BE ROTATED IN 90° STEPS.

				TOLERANCES UNLESS SPECIFIED	
				DEC.	INCHES
8	UPDATED DRAWING			RJW 05-09-2007	.X ±.1
7	ADDED LIFT LUG CN34025			NJS 07-11-2001	.XX ±.03
6	REMOVED EYEBOLT			BLR 11-09-1995	.XXX ±.005
5	REDRAWN ON CAD – ADDED EYEBOLT			KL 06-29-1994	.XXXX ±.0005
NO.	REVISION			BY & DATE	CHK ANG ± 7'30"
THIS DRAWING IN DESIGN AND DETAIL IS OUR PROPERTY AND MUST NOT BE USED EXCEPT IN CONNECTION WITH OUR WORK ALL RIGHTS OF DESIGN AND INVENTION ARE RESERVED THIS IS AN ELECTRONICALLY GENERATED DOCUMENT – DO NOT SCALE THIS PRINT					RFP
					DIST LB



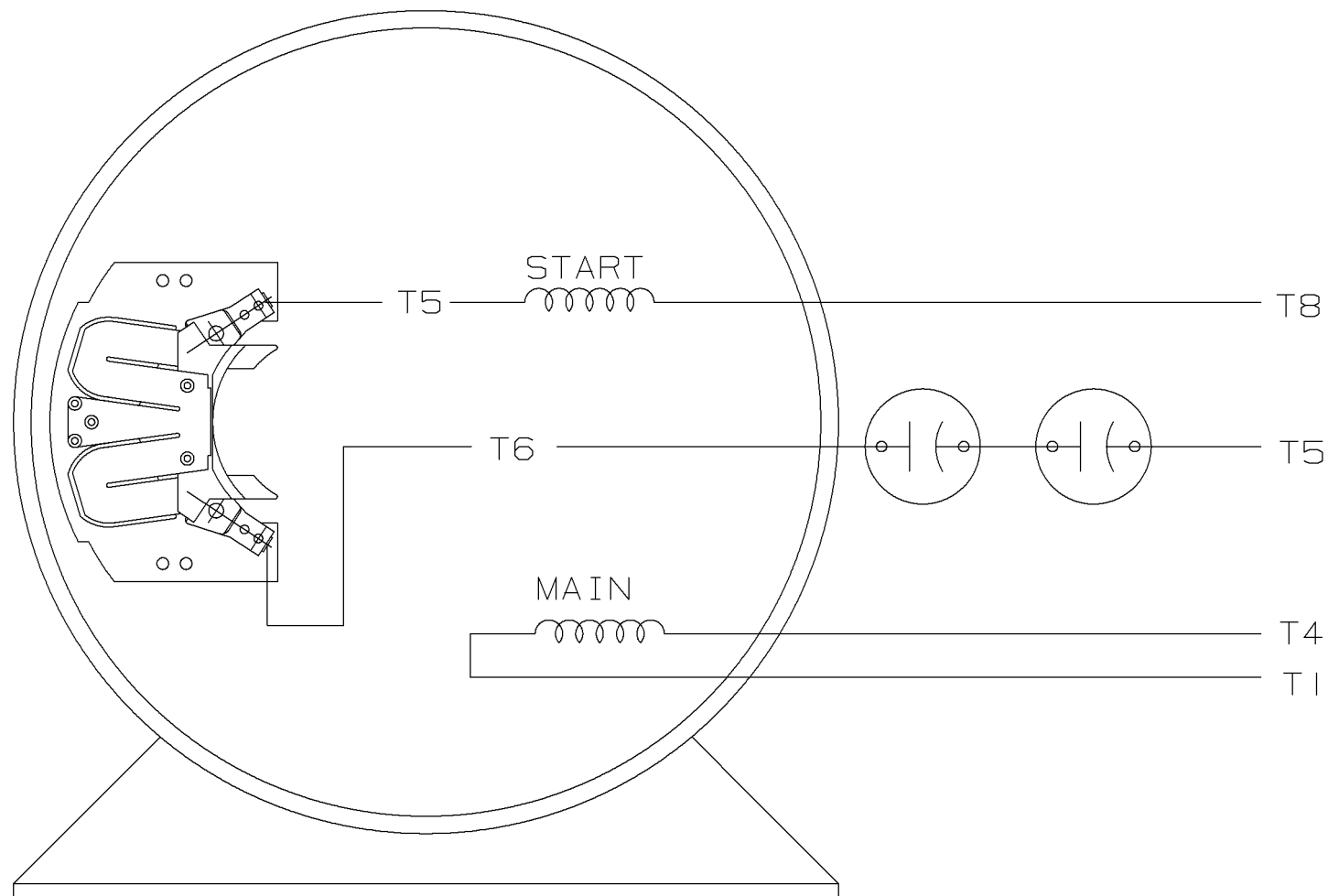
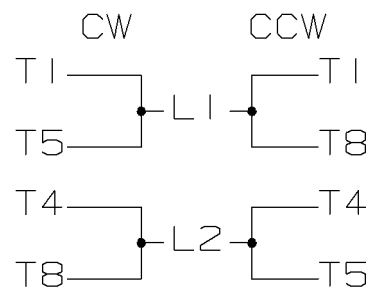
TITLE OUTLINE  
180T FR. - BB - SCS - DR.PR.

MAT'L.


FINISH

CAD FILE SS65665

SIZE A DRAWING NO. SS65665 PAGE 8 OF 8 REV. 8

SINGLE VOLTAGE CAPACITOR START  
MOTOR, ELECTRICALLY REVERSIBLE

VIEW OF TERMINAL END

				✓ MAX. SURFACE ROUGHNESS UNLESS NOTED OTHERWISE	UNLESS OTHERWISE SPECIFIED DIMENSIONS ARE IN INCHES TOL. ON XX±.02    XXX±.005    XXXX±.0005    ANGLES± 7°30"				
				MATL SPEC	180 - 210 SWITCH		DRAWN BY GK	09-24-1986	
				FINISH			CHKD BY ML	11-04-1986	
I	11-04-1986	NEW DRAWING  CN 7664C	GK	REFERENCE DRW.			WAUSAU, WISCONSIN 54401		APPD BY FG
REV	DATE	CHANGE		NAME	PART NAME CONNECTION DIAGRAM				DRWG NO A - EE7090JL
		SHOP BOOK	PURCHASED	DISTRIBUTION - WA - LB - WP - LM - BR			CADD FILE NO.	EE7090JL	

SHOP BOOK

PURCHASED

DISTRIBUTION - WA - LB - WP - LM - BR

CADD FILE NO.

EE7090JL

```
ERROR: undefined  
OFFENDING COMMAND: de
```

```
STACK:
```

```
{pop pop pop pop }  
/B  
-dictionary-  
/Pscript_WinNT_Compat  
-dictionary-
```