

PRODUCT INFORMATION PACKET

marathon®
Motors

Model No: 184TBFR7701

Catalog No: I223

5 HP General Purpose Motor, 1 phase, 3600 RPM, 208-230 V, 184T Frame, TEFC
General Purpose Motors



Regal and Marathon are trademarks of Regal Rexnord Corporation or one of its affiliated companies.

©2021 Regal Rexnord Corporation, All Rights Reserved. MC017097E

RegalRexnord

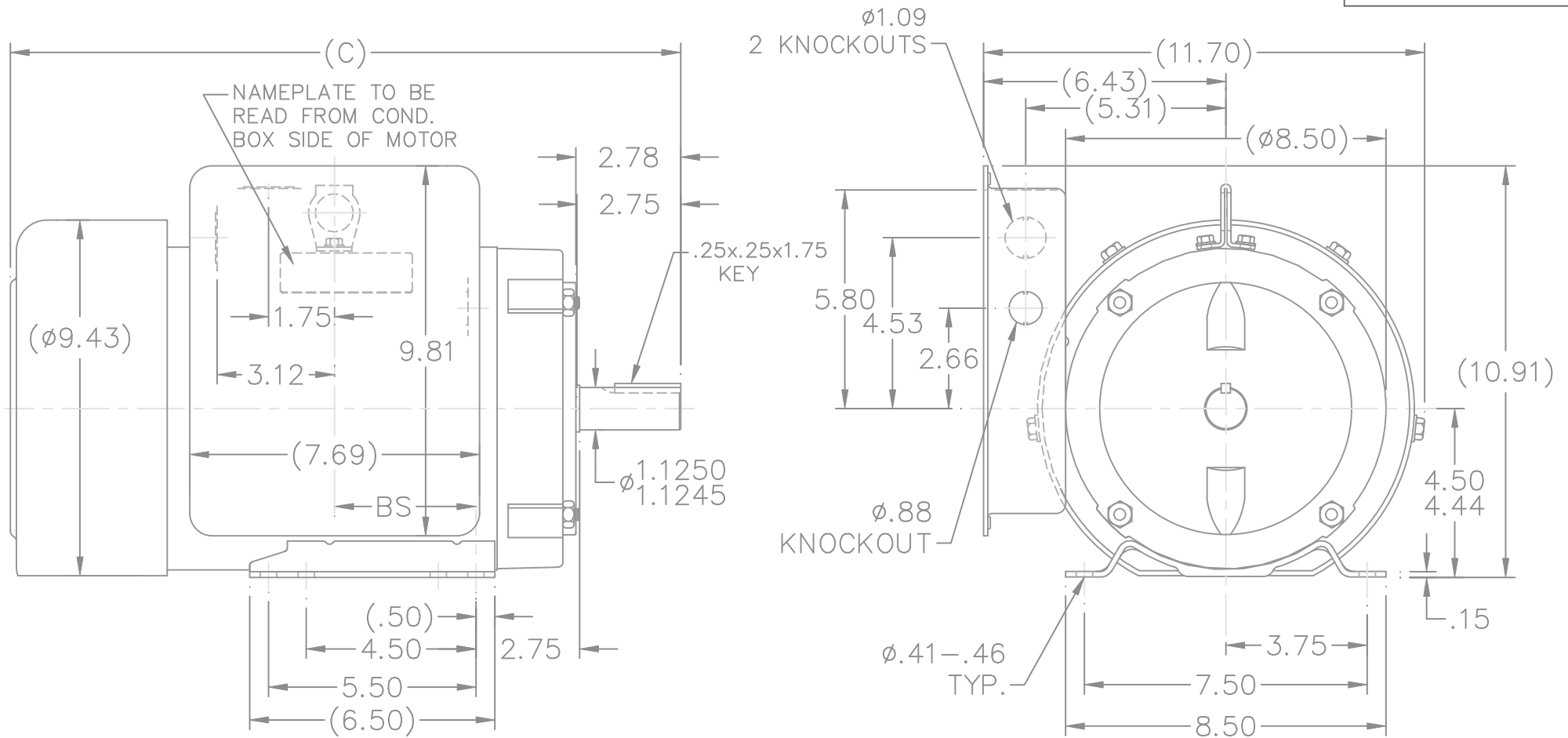
Nameplate Specifications

Output HP	5 Hp	Output KW	3.7 kW
Frequency	60 Hz	Voltage	208-230 V
Current	25.1-22.4-22.4 A	Speed	3510 rpm
Service Factor	1	Phase	1
Efficiency	80 %	Power Factor	91.2
Duty	Continuous	Insulation Class	B
Design Code	L	KVA Code	G
Frame	184T	Enclosure	Totally Enclosed Fan Cooled
Thermal Protection	No	Ambient Temperature	40 °C
Drive End Bearing Size	6206	Opp Drive End Bearing Size	6205
UL	Recognized	CSA	Y
CE	Y	IP Code	43
Number of Speeds	1		


Technical Specifications

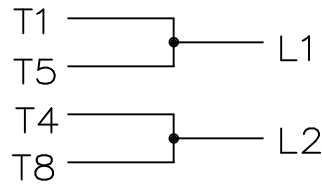
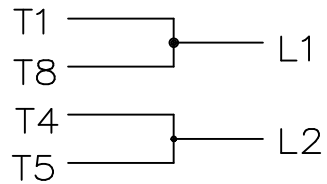
Electrical Type	Capacitor Start Capacitor Run	Starting Method	Across The Line
Poles	2	Rotation	Selective Counterclockwise
Resistance Main	0 Ohms	Mounting	Rigid Base
Motor Orientation	Horizontal	Drive End Bearing	Ball
Opp Drive End Bearing	Ball	Frame Material	Rolled Steel
Shaft Type	T	Overall Length	17.28 in
Frame Length	8.25 in	Shaft Diameter	1.125 in
Shaft Extension	2.75 in	Assembly/Box Mounting	F1 ONLY
Connection Drawing	A-EE9048LV	Outline Drawing	A-SS67394-825

This is an uncontrolled document once printed or downloaded and is subject to change without notice. Date Created:10/12/2021

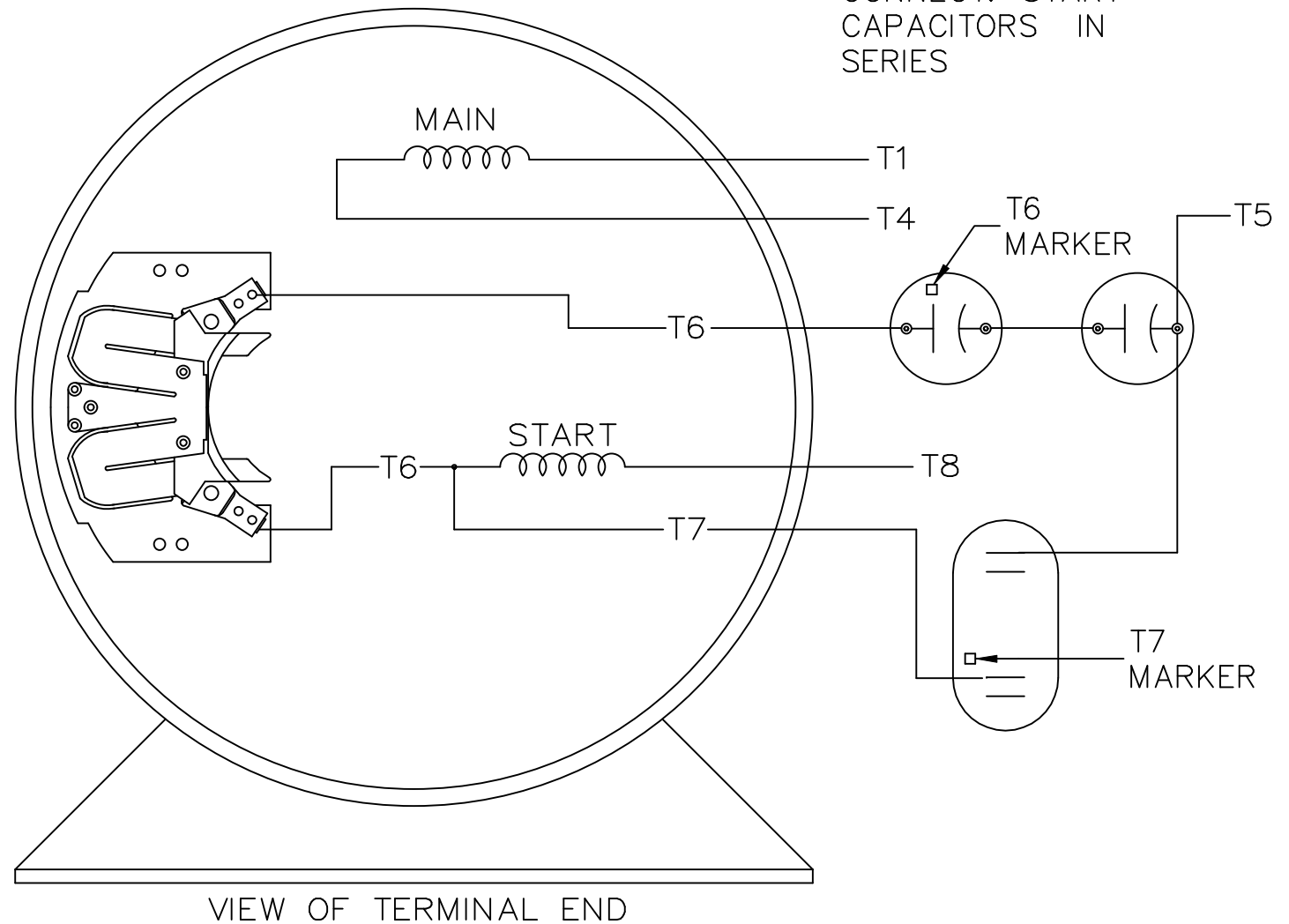



DASH	FRAME	C	BS		
825	184T	17.28	3.50		
875	184T	17.78	3.75		

				TOLERANCES UNLESS SPECIFIED			DRAWN BLR 10-18-1995			
8	UPDATED DRAWING	RJW 05-10-2007		DEC.	INCHES		CHK ML 10-19-1995			
7	ADDED LIFT LUG CN34025	HLB 07-12-2001		.X	±.1	APPD GK 10-19-1995				
6	CLARIFIED KEY DIM. AND CORRECTED			.XX	±.03	TITLE OUTLINE 180 FRAME – TEFC	SCALE 1=4			
	RIGHT END VIEW CN23925-110	BLR 02-11-1997		.XXX	±.005		REF			
5	REDRAWN ON CAD, ADDED NEW BASE CN20352	BLR 10-19-1995		.XXXX	±.0005	MAT'L.	FMF			
NO.	REVISION	BY & DATE	CHK	ANG	±7'30"	FINISH	PREV			
THIS DRAWING IN DESIGN AND DETAIL IS OUR PROPERTY AND MUST NOT BE USED EXCEPT IN CONNECTION WITH OUR WORK ALL RIGHTS OF DESIGN AND INVENTION ARE RESERVED THIS IS AN ELECTRONICALLY GENERATED DOCUMENT – DO NOT SCALE THIS PRINT			RFP		CAD FILE SS67394		SIZE A	DRAWING NO. SS67394	PAGE OF	REV. 8
			DIST LB							

C.W. ROTATIONC.C.W. ROTATION

SINGLE VOLTAGE
CAPACITOR START
CAPACITOR RUN
REVERSIBLE



				TOLERANCES UNLESS SPECIFIED		 REGAL-BELOIT CORPORATION	DRAWN GK 11-04-1986		
				DEC.	INCHES		CHK ML 11-04-1986		
				.X	±.1		APPD FG 11-04-1986		
				.XX	±.02		SCALE 1=1		
2	REDRAWN IN AUTOCAD	RWR 09-07-2005	ML	.XXX	±.005	TITLE CONNECTION DIAGRAM 180-210 SWITCH	REF DRW.		
1	NEW DRAWING CN7664C	GK 11-04-1986		.XXXX	±.0005		FMF		
NO.	REVISION	BY & DATE	CHK	ANG	±7'30"	FINISH	PREV		
THIS DRAWING IN DESIGN AND DETAIL IS OUR PROPERTY AND MUST NOT BE USED EXCEPT IN CONNECTION WITH OUR WORK ALL RIGHTS OF DESIGN AND INVENTION ARE RESERVED THIS IS AN ELECTRONICALLY GENERATED DOCUMENT - DO NOT SCALE THIS PRINT				RFP	11-04-1986	CAD FILE EE9048LV	SIZE A	DRAWING NO. EE9048LV	PAGE 1 OF 1 REV. 2
				DIST	LB				