

PRODUCT INFORMATION PACKET

marathon®
Motors

Model No: 184TBFR7315

Catalog No: Z433

5 HP Close-Coupled Pump Motor, 1 phase, 3600 RPM, 230 V, 184JM Frame, TEFC
Close-Coupled Pump Motors



Regal and Marathon are trademarks of Regal Rexnord Corporation or one of its affiliated companies.

©2021 Regal Rexnord Corporation, All Rights Reserved. MC017097E

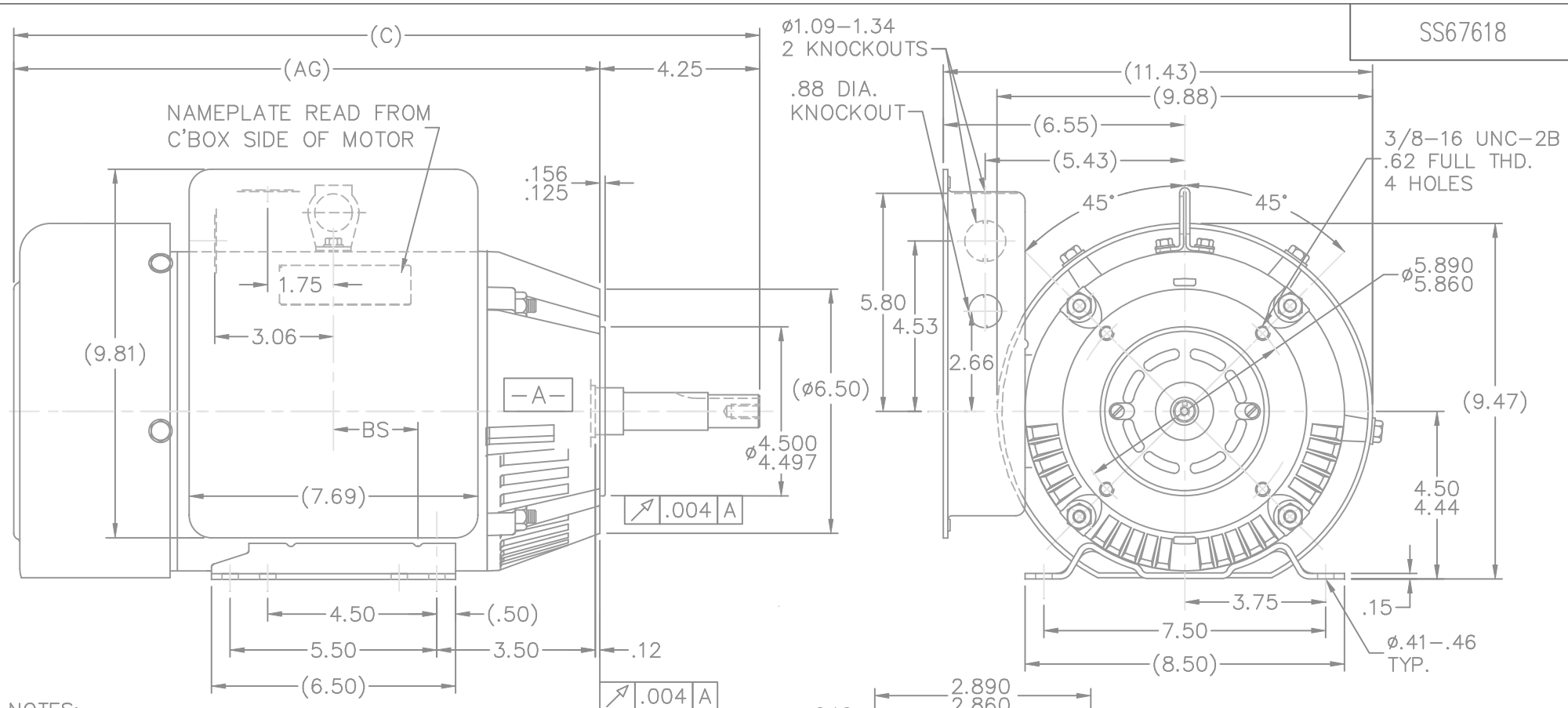
RegalRexnord

Nameplate Specifications

| | | | |
|------------------------|------------|----------------------------|-----------------------------|
| Output HP | 5 Hp | Output KW | 3.7 kW |
| Frequency | 60 Hz | Voltage | 230 V |
| Current | 22.4 A | Speed | 3510 rpm |
| Service Factor | 1 | Phase | 1 |
| Efficiency | 80 % | Power Factor | 91.2 |
| Duty | Continuous | Insulation Class | B |
| Design Code | L | KVA Code | G |
| Frame | 184JM | Enclosure | Totally Enclosed Fan Cooled |
| Thermal Protection | No | Ambient Temperature | 40 °C |
| Drive End Bearing Size | 6307 | Opp Drive End Bearing Size | 6205 |
| UL | Recognized | CSA | Y |
| CE | Y | IP Code | 43 |
| Number of Speeds | 1 | | |

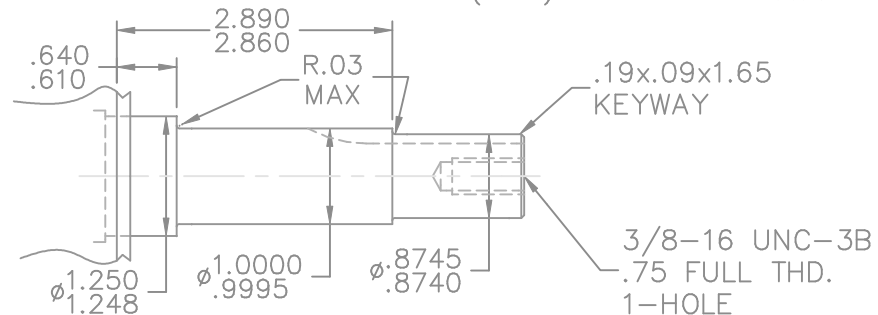
Technical Specifications

| | | | |
|-----------------------|-------------------------------|-----------------------|----------------------------|
| Electrical Type | Capacitor Start Capacitor Run | Starting Method | Across The Line |
| Poles | 2 | Rotation | Selective Counterclockwise |
| Resistance Main | 0 Ohms | Mounting | Rigid Base |
| Motor Orientation | Horizontal | Drive End Bearing | Ball |
| Opp Drive End Bearing | Ball | Frame Material | Rolled Steel |
| Shaft Type | JM | Overall Length | 19.75 in |
| Frame Length | 8.25 in | Shaft Diameter | 0.875 in |
| Shaft Extension | 4.28 in | Assembly/Box Mounting | F1/F2 CAPABLE |
| Outline Drawing | A-SS67618-825 | Connection Drawing | A-EE9048LV |

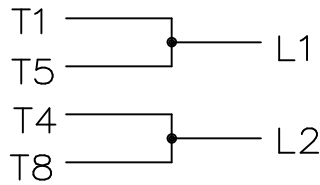
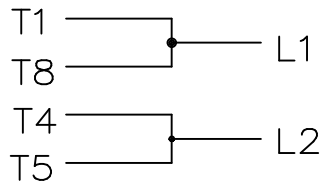


- NOTES:
1. COND. BOX CAN BE ROTATED IN 90° STEPS.
 2. COND. BOX CAN BE MOUNTED ON OPPOSITE SIDE BY REMOVING BRACKETS & TURNING FRAME 180°.

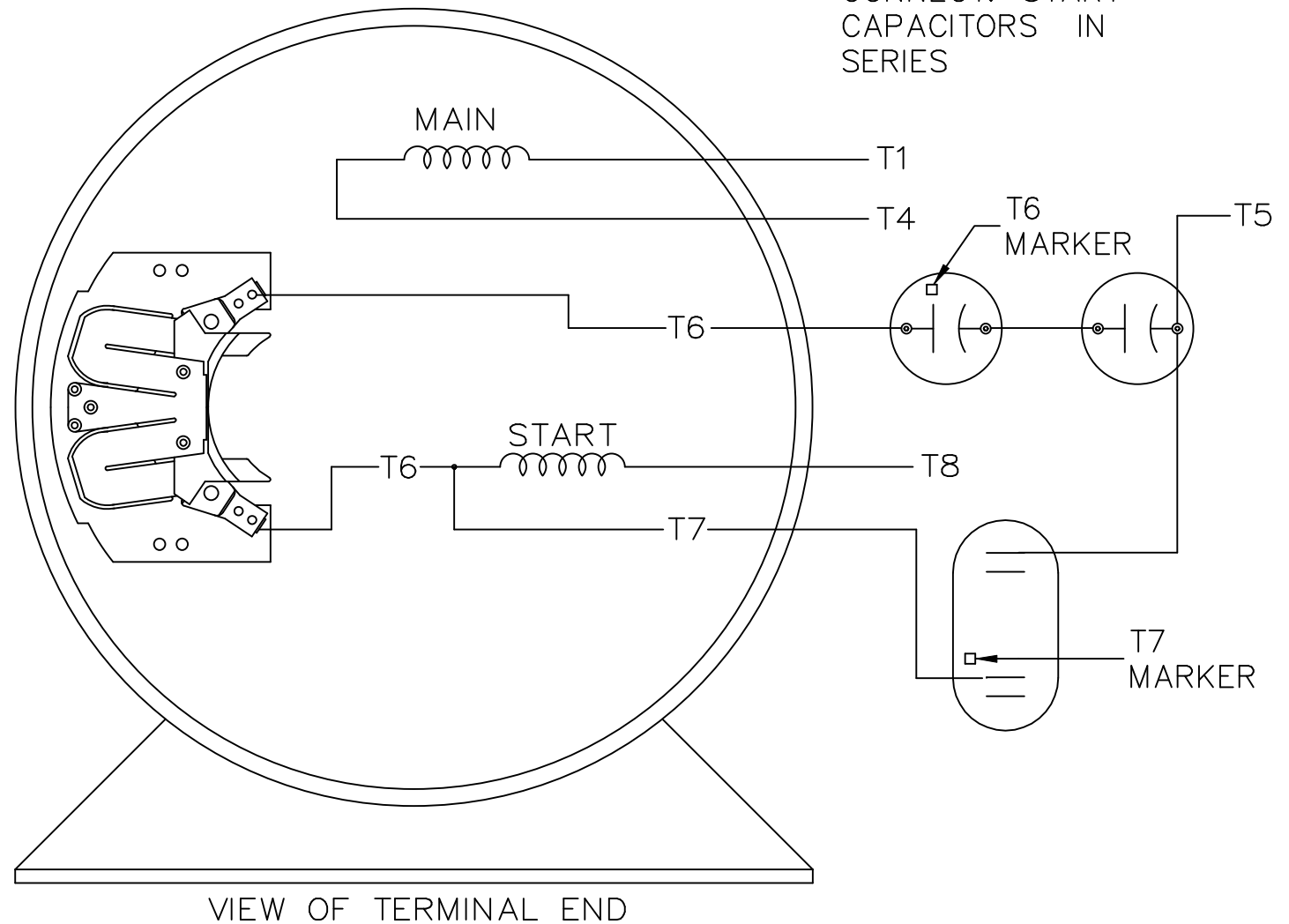
| DASH | FR. | C | AG | BS |
|------|------|-------|-------|------|
| 725 | 182T | 18.75 | 14.50 | 3.00 |
| 775 | 184T | 19.25 | 15.00 | 3.25 |
| 825 | 184T | 19.75 | 15.50 | 3.50 |
| 875 | 184T | 20.25 | 16.00 | 3.75 |




| | | | | TOLERANCES UNLESS SPECIFIED | | MARATHON ELECTRIC | DRAWN BRH 10-27-1995 | |
|--|---|----------------|------------------|-----------------------------|--------|---|----------------------|---------------|
| NO. | REVISION | BY & DATE | CHK | ANG | ±7'30" | | CHK | DA 11-07-1995 |
| 8 | UPDATED REAR BRKT. TO ALUMINUM CN 33701 | RJW 10-29-2004 | ML | DEC. | INCHES | TITLE OUTLINE 180T FR. - BB - SCS - TEFC - JM EXT. MAT'L. FINISH | APPD | GK 11-07-1995 |
| 7 | REDRAWN IN AUTOCAD | TAT 07-06-2004 | ML | .X | ±.1 | | SCALE | 1=4 |
| 6 | ADDED LIFTING LUGS MU39590 | CAV 11-15-2001 | | .XX | ±.03 | | REF | |
| 5 | REMOVED SLINGER CN 29344 | HLB 08-16-2000 | | .XXX | ±.005 | | FMF | |
| 4 | ADDED "NAMEPLATE READ FROM..." CN 24000-210 | MH 02-14-2001 | | .XXXX | ±.0005 | | PREV | |
| THIS DRAWING IN DESIGN AND DETAIL IS OUR PROPERTY AND MUST NOT BE USED EXCEPT IN CONNECTION WITH OUR WORK ALL RIGHTS OF DESIGN AND INVENTION ARE RESERVED THIS IS AN ELECTRONICALLY GENERATED DOCUMENT - DO NOT SCALE THIS PRINT | | RFP | CAD FILE ss67618 | | SIZE A | DRAWING NO. SS67618 | PAGE OF | REV. 8 |
| | | DIST LB | | | | | | |

C.W. ROTATIONC.C.W. ROTATION

SINGLE VOLTAGE
CAPACITOR START
CAPACITOR RUN
REVERSIBLE



| | | | | | | | | | |
|--|---------------------|----------------|----------------|--------------------------------|-------------------|---|---------------------|-------------------------------------|-----------|
| | | | | TOLERANCES UNLESS SPECIFIED | |  REGAL-BELOIT CORPORATION | DRAWN GK 11-04-1986 | | |
| | | | | DEC. | INCHES | | CHK ML 11-04-1986 | | |
| | | | | .X | ±.1 | | APPD FG 11-04-1986 | | |
| | | | | .XX | ±.02 | | SCALE 1=1 | | |
| 2 | REDRAWN IN AUTOCAD | RWR 09-07-2005 | ML | .XXX | ±.005 | TITLE CONNECTION DIAGRAM 180-210 SWITCH | REF | DRW. | |
| 1 | NEW DRAWING CN7664C | GK 11-04-1986 | | .XXXX | ±.0005 | | MAT'L. | FMF | |
| NO. | REVISION | BY & DATE | CHK | ANG | ±7'30" | FINISH | PREV | | |
| THIS DRAWING IN DESIGN AND DETAIL IS OUR PROPERTY AND MUST NOT BE USED EXCEPT IN CONNECTION WITH OUR WORK ALL RIGHTS OF DESIGN AND INVENTION ARE RESERVED THIS IS AN ELECTRONICALLY GENERATED DOCUMENT – DO NOT SCALE THIS PRINT | | | RFP 11-04-1986 | | CAD FILE EE9048LV | | SIZE A | DRAWING NO. PAGE 1 OF 1 EE9048LV | REV. 2 |
| | | | DIST LB | | | | | | |