

PRODUCT INFORMATION PACKET

Model No: 184TBFR7034

Catalog No: I315

Other Purpose Motor, 5 HP, 1 Ph, 60 Hz, 230 V, 1800 RPM, 184TC Frame, TEFC



Regal and are trademarks of Regal Rexnord Corporation or one of its affiliated companies.
©2022 Regal Rexnord Corporation, All Rights Reserved. MC017097E

Nameplate Specifications

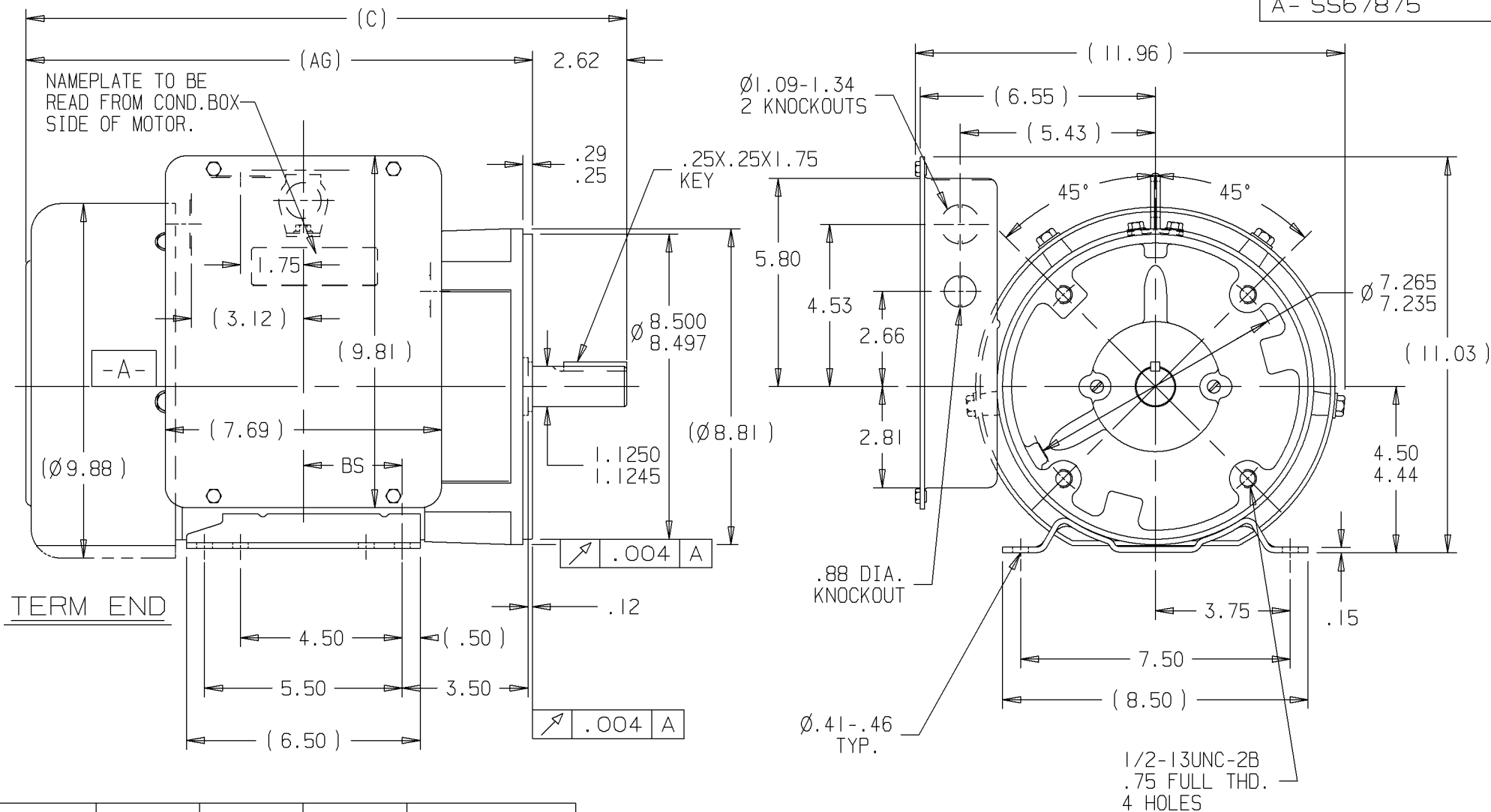
Output HP	5 Hp	Output KW	3.7 kW
Frequency	60 Hz	Voltage	230 V
Current	21.0 A	Speed	1750 rpm
Service Factor	1	Phase	1
Efficiency	84 %	Power Factor	92.8
Duty	Continuous	Insulation Class	B
Design Code	NO DESIGN CODE	KVA Code	H
Frame	184TC	Enclosure	Totally Enclosed Fan Cooled
Thermal Protection	Manual	Ambient Temperature	40 °C
Drive End Bearing Size	6207	Opp Drive End Bearing Size	6205
UL	Recognized (Not Protector)	CSA	Y
CE	Y	IP Code	43
Number of Speeds	1		

Technical Specifications

Electrical Type	Capacitor Start Capacitor Run	Starting Method	Across The Line
Poles	4	Rotation	Selective Counterclockwise
Mounting	Rigid Base	Motor Orientation	Horizontal
Drive End Bearing	Ball	Opp Drive End Bearing	Ball
Frame Material	Rolled Steel	Shaft Type	T
Overall Length	18.72 in	Frame Length	8.75 in
Shaft Diameter	1.125 in	Shaft Extension	2.75 in
Assembly/Box Mounting	F1 ONLY		
Connection Drawing	A-EE9048LW	Outline Drawing	A-SS67875-875

This is an uncontrolled document once printed or downloaded and is subject to change without notice. Date Created:09/07/2022


A- SS67875



DASH	FR.	C	AG	BS
825	184T	18.22	15.60	3.25
875	184T	18.72	16.10	3.75

NOTES:

1. BOX CAN BE ROTATED IN 90° STEPS.

5	07-19-2001	ADDED LIFT LUG	HLB	✓ MAX. SURFACE ROUGHNESS UNLESS NOTED OTHERWISE	UNLESS OTHERWISE SPECIFIED DIMENSIONS ARE IN INCHES TOL. ON XX±.03 XXX±.005 XXXX±.0005 ANGLES± 7°30"			
4	11-29-1995	REVISED GEOMETRIC TOL. TO CORRECTED SURFACES	BLR	MATL SPEC	 WAUSAU, WISCONSIN 54401			
3	11-09-1995	REMOVED EYEBOLT	BLR	FINISH				
REV	DATE	CHANGE	NAME	PART NAME	DRWG NO			
				180 FR. - TEFC - 'C' FACE	A- SS67875			

SHOP BOOK

PURCHASED

DISTRIBUTION - WA - LB - WP - LM

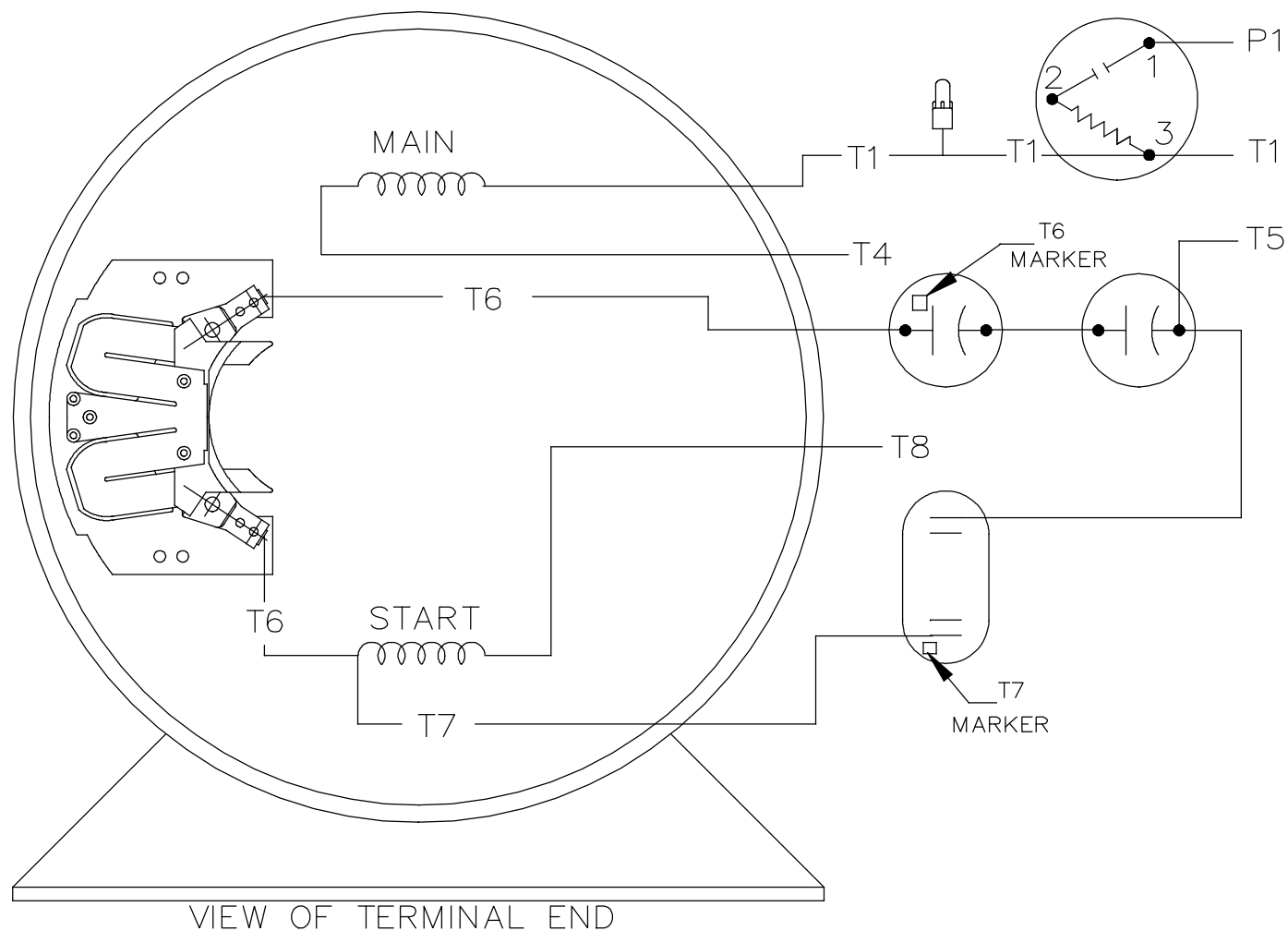
CADD FILE NO.


SS67875

T8 _____

T5

SINGLE VOLTAGE
CAPACITOR START
CAPACITOR RUN
REVERSIBLE



				TOLERANCES UNLESS SPECIFIED		 Regal Beloit America, Inc.		DRAWN		GK	11-05-1986
				DEC.	INCHES			CHK	ML	11-05-1986	
				.X	±.1	TITLE CONNECTION DIAGRAM		APPD	FG	11-06-1986	
				.XX	±.02			SCALE	1=1		
2	LOGO CHANGED TO REGAL.	NK 11-29-2018	MSD	.XXX	±.005	MAT'L.		REF			
1	NEW DRAWING CN7664C	GK 11-06-1986		.XXXX	±.0005			FMF			
NO.	REVISION	BY & DATE	CHK	ANG	±7'30"	FINISH		PREV			
THIS DRAWING IN DESIGN AND DETAIL IS OUR PROPERTY AND MUST NOT BE USED EXCEPT IN CONNECTION WITH OUR WORK ALL RIGHTS OF DESIGN AND INVENTION ARE RESERVED THIS IS AN ELECTRONICALLY GENERATED DOCUMENT - DO NOT SCALE THIS PRINT			RFP		CAD FILE EE9048LW		SIZE A	DRAWING NO.	PAGE	OF	REV.
			DIST WA					EE9048LW			