

PRODUCT INFORMATION PACKET

Model No: 184TBDR7630

Catalog No: I130

Pressure Washer Motor, 3 HP, 1 Ph, 60 Hz, 208-230 V, 1800 RPM, 184T Frame, DP



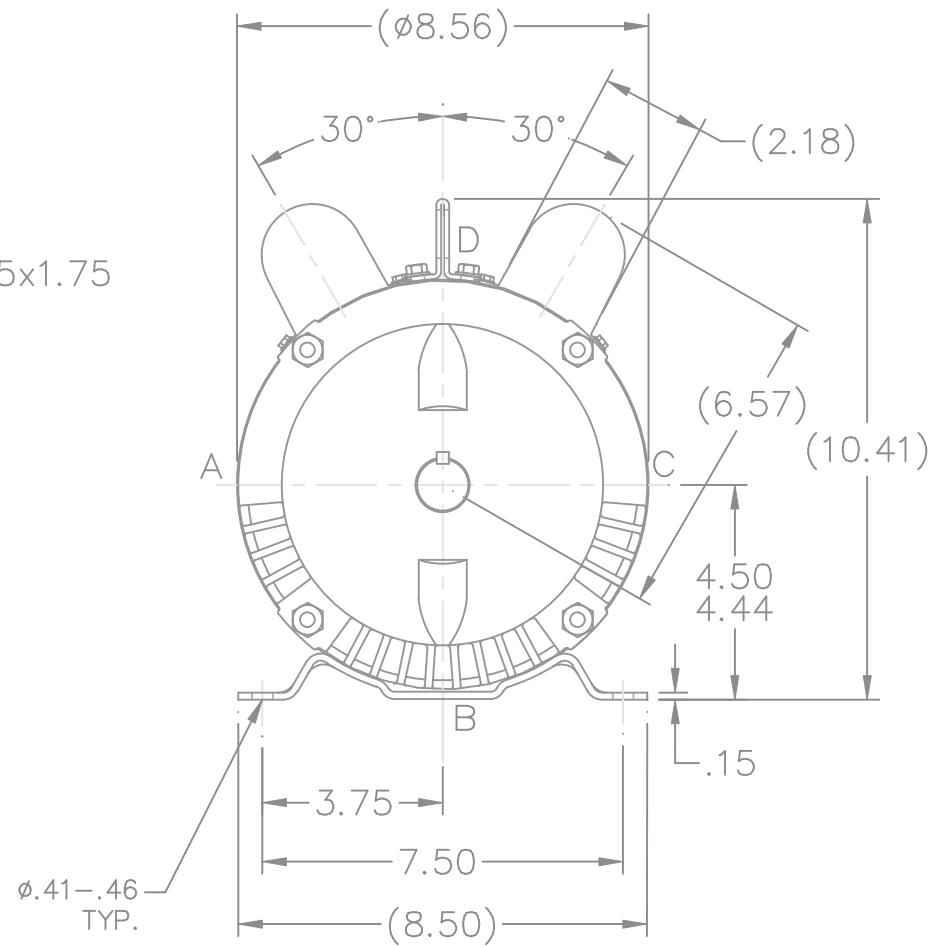
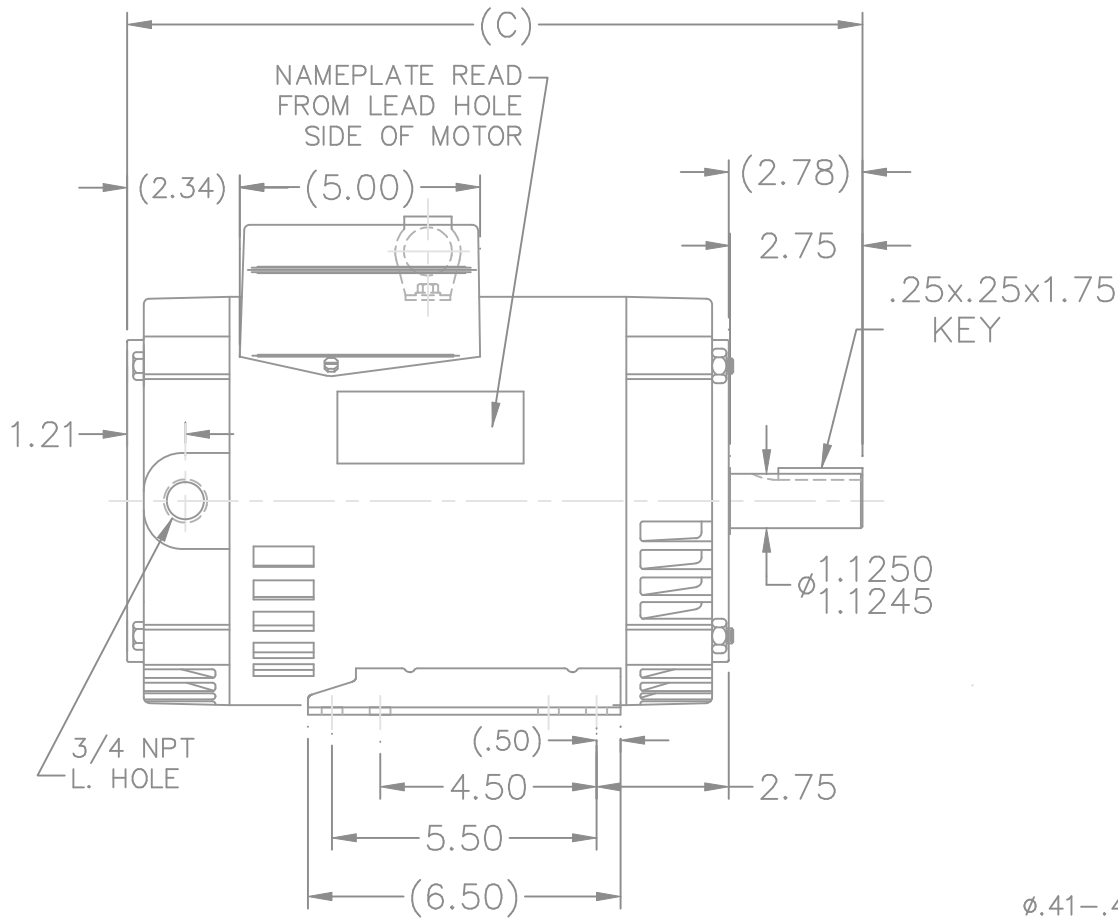
Regal and are trademarks of Regal Rexnord Corporation or one of its affiliated companies.
©2022 Regal Rexnord Corporation, All Rights Reserved. MC017097E

Nameplate Specifications


Output HP	3 Hp	Output KW	2.2 kW
Frequency	60 Hz	Voltage	208-230 V
Current	15.0-13.7 A	Speed	1750 rpm
Service Factor	1.15	Phase	1
Efficiency	82.5 %	Power Factor	85.4
Duty	Continuous	Insulation Class	B
Design Code	No Design Code	KVA Code	H
Frame	184T	Enclosure	Drip Proof
Thermal Protection	Manual	Ambient Temperature	40 °C
Drive End Bearing Size	6206	Opp Drive End Bearing Size	6205
UL	Recognized (Not Protector)	CSA	Y
CE	Y	IP Code	22
Number of Speeds	1		

Technical Specifications

Electrical Type	Capacitor Start Capacitor Run	Starting Method	Across The Line
Poles	4	Rotation	Selective Counterclockwise
Resistance Main	0 Ohms	Mounting	Rigid Base
Motor Orientation	Horizontal	Drive End Bearing	Ball
Opp Drive End Bearing	Ball	Frame Material	Rolled Steel
Shaft Type	T	Overall Length	15.29 in
Shaft Diameter	1.125 in	Shaft Extension	2.75 in
Assembly/Box Mounting	F1 Only		
Connection Drawing	A-EE9048LZ	Outline Drawing	A-SS67836-825

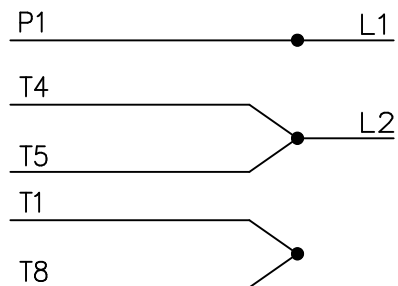


DASH	FR.	C
825	182T	15.29
825	184T	15.29
875	184T	15.79
925	184T	16.29

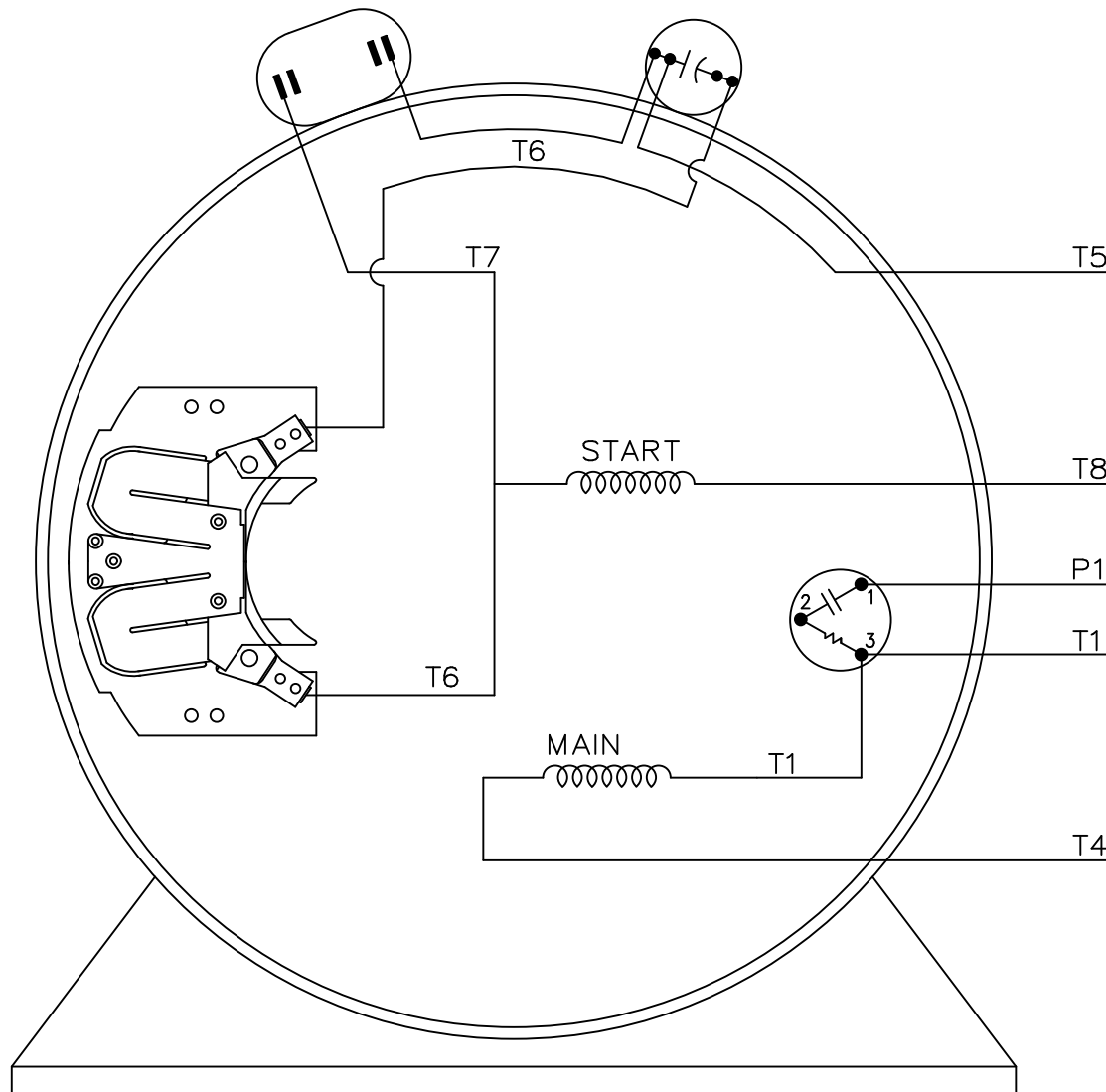
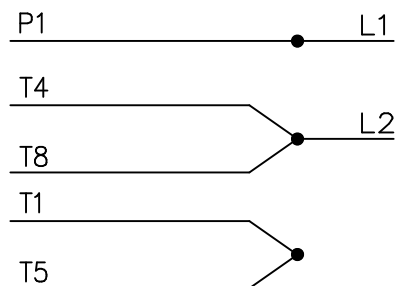
			TOLERANCES UNLESS SPECIFIED			DRAWN LZ 09-18-1994					
			DEC.	INCHES		CHK	ML	09-29-1994			
5	ADDED LIFT LUG	CN34025	HLB	07-19-2001	.X	$\pm .1$	APPD	GK	09-29-1994	SCALE	1=4
4	CLARIFIED REMOVAL OF EYEBOLT CLARIFIED SHAFT DIA.	CN23925-617	MRB	11-21-1997	.XX	$\pm .03$	REF	A	SS67836	FMF	
3	ADDED NEW BASE (68105-2)	CN14442	MRB	11-06-1995	.XXX	$\pm .005$	PREV				
NO.	REVISION		BY & DATE	CHK	ANG	$\pm 1/2'$	FINISH				
	THIS DRAWING IN DESIGN AND DETAIL IS OUR PROPERTY AND MUST NOT BE USED EXCEPT IN CONNECTION WITH OUR WORK ALL RIGHTS OF DESIGN AND INVENTION ARE RESERVED THIS IS AN ELECTRONICALLY GENERATED DOCUMENT - DO NOT SCALE THIS PRINT		RFP	09-29-1994	CAD FILE	SS67836	SIZE	DRAWING NO.	PAGE	OF	REV.
			DIST	LB			A	SS67836			5

SINGLE VOLTAGE
CAPACITOR START
CAPACITOR RUN
REVERSIBLE


C.C.W. ROTATION



C.W. ROTATION



VIEW OF TERMINAL END

				TOLERANCES UNLESS SPECIFIED			DRAWN GK 01-10-1987
				DEC.	INCHES		CHK
				.X	± -		APPD
				.XX	± -		SCALE
				.XXX	± -		REF
1	NEW DRAWING	CN-7664C	GK 01-10-1987	.XXXX	± -	TITLE	CONNECTION DIAGRAM 180 -210 SWITCH
NO.	REVISION	BY & DATE	CHK	ANG	± -	MAT'L.	FMF
				RFP		FINISH	PREV
THIS DRAWING IN DESIGN AND DETAIL IS OUR PROPERTY AND MUST NOT BE USED EXCEPT IN CONNECTION WITH OUR WORK ALL RIGHTS OF DESIGN AND INVENTION ARE RESERVED THIS IS AN ELECTRONICALLY GENERATED DOCUMENT - DO NOT SCALE THIS PRINT				DIST		CAD FILE	EE9048LZ
						SIZE	DRAWING NO.
						A	EE9048LZ
							REV.
							1