

# PRODUCT INFORMATION PACKET

Model No: 184TBDR7009

Catalog No: Z307

Crop Dryer Motor, 7 HP, 1 Ph, 60 Hz, 230 V, 3600 RPM, 184TZ Frame, DPAO

Regal and are trademarks of Regal Rexnord Corporation or one of its affiliated companies.  
©2022 Regal Rexnord Corporation, All Rights Reserved. MC017097E



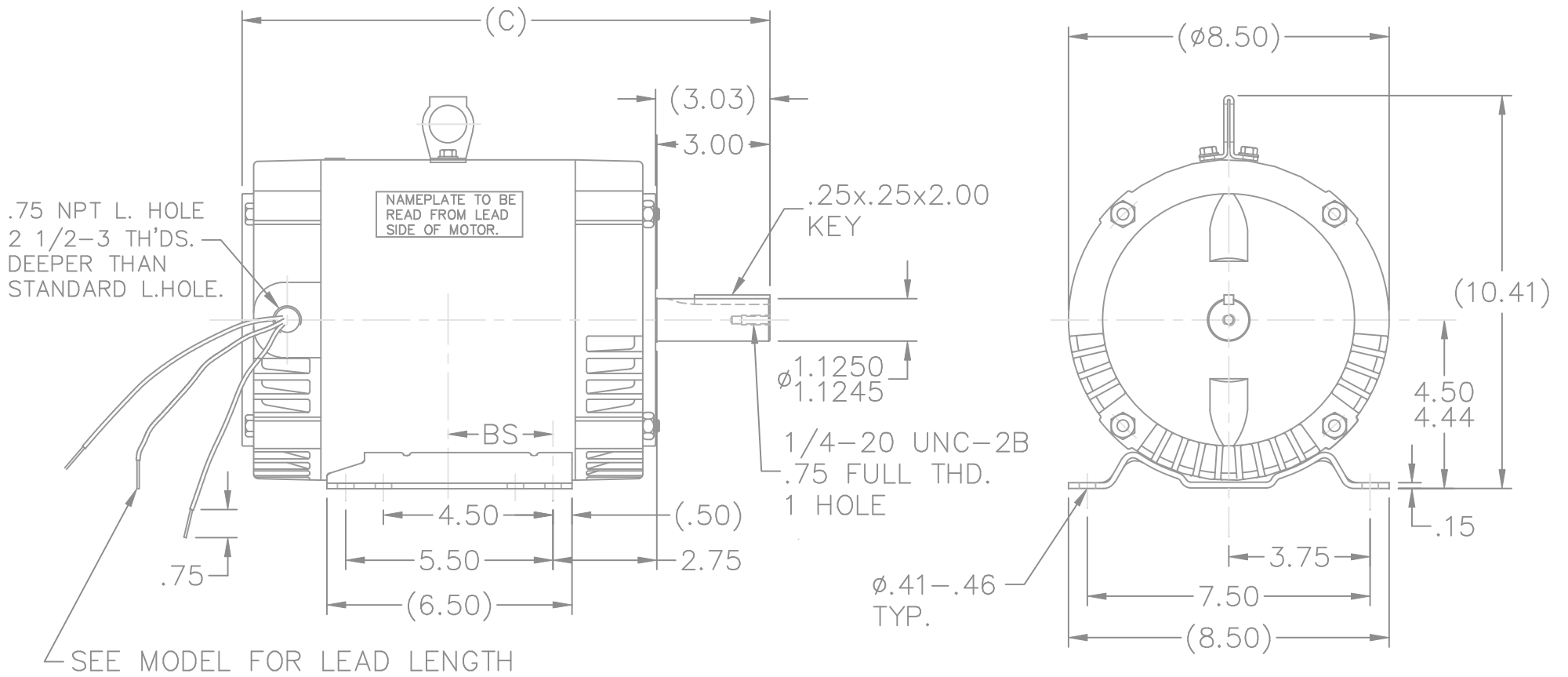
### Nameplate Specifications

Output HP	7 Hp	Output KW	5.2 kW
Frequency	60 Hz	Voltage	230 V
Current	28.0 A	Speed	3515 rpm
Service Factor	1.4	Phase	1
Efficiency	82.5 %	Power Factor	96.5
Duty	Continuous Air Over	Insulation Class	F
Design Code	NO DESIGN CODE	KVA Code	D
Frame	184TZ	Enclosure	Drip Proof Air Over
Thermal Protection	Thermostat	Ambient Temperature	40 °C
Drive End Bearing Size	6206	Opp Drive End Bearing Size	6205
UL	Recognized	CSA	Y
CE	N	IP Code	22
Number of Speeds	1		

### Technical Specifications

Electrical Type	Capacitor Start Capacitor Run	Starting Method	Across The Line
Poles	2	Rotation	Selective Counterclockwise
Resistance Main	0 Ohms	Mounting	Rigid Base
Motor Orientation	Horizontal	Drive End Bearing	Ball
Opp Drive End Bearing	Ball	Frame Material	Rolled Steel
Shaft Type	Single Special Extension	Assembly/Box Mounting	F1 OUT ODE BRKT RADIAL
Outline Drawing	A-SS66065-875	Connection Drawing	A-EE9048LU

This is an uncontrolled document once printed or downloaded and is subject to change without notice. Date Created:09/08/2022

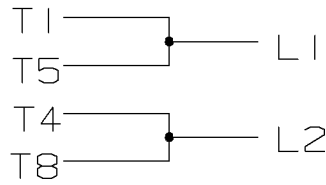


DASH	FR.	BS	C	MOUNTING	DASH	FR.	BS	C	MOUNTING
675	182/4T	2.78	14.00	F1 OR F2	975	184	4.28	17.00	F1 OR F2
725	184	3.03	14.50	F1 OR F2	1025	184	4.53	17.50	F1 OR F2
875	184	3.78	16.00	F1 OR F2					
925	184	4.03	16.50	F1 OR F2					

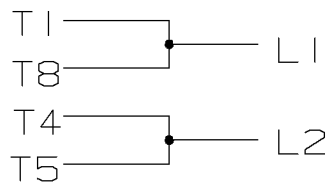
				TOLERANCES UNLESS SPECIFIED		MARATHON ELECTRIC	DRAWN LZ 07-01-1994						
NO.	REVISION	BY & DATE	CHK	ANG	±		SCALE	1=4	REF	FMF	PREV		
12	.75 FULL THREAD WAS 1.00	CN 46212	DRS	10-11-2005	ML	DEC.	INCHES				CHK ML 07-06-1994		
11	REDRAWN IN AUTOCAD		TAT	06-13-2005	ML	.X	±.1				APPD GK 07-06-1994		
10	ADDED LIFT LUG	CN 34025	HLB	02-19-2001		.XX	±.03	TITLE OUTLINE					
9	REM.-675 182T,-675 182/4T WAS 184T	CN 29200-443	TJB	05-16-2000		.XXX	±.005	180 FR. - BB - SCS - DR.PR					
8	ADDED -675 W/F1 ONLY MOUNTING	CN 27400-320	CAE	11-12-1999		.XXXX	±.0005	MAT'L.					
								FINISH					
THIS DRAWING IN DESIGN AND DETAIL IS OUR PROPERTY AND MUST NOT BE USED EXCEPT IN CONNECTION WITH OUR WORK ALL RIGHTS OF DESIGN AND INVENTION ARE RESERVED THIS IS AN ELECTRONICALLY GENERATED DOCUMENT - DO NOT SCALE THIS PRINT				RFP		CAD FILE ss66065			SIZE	DRAWING NO.	PAGE	OF	REV.
				DIST	LB				A	SS66065			12

CONNECT:  
 START CAPACITORS IN SERIES  
 RUN CAPACITORS IN PARALLEL

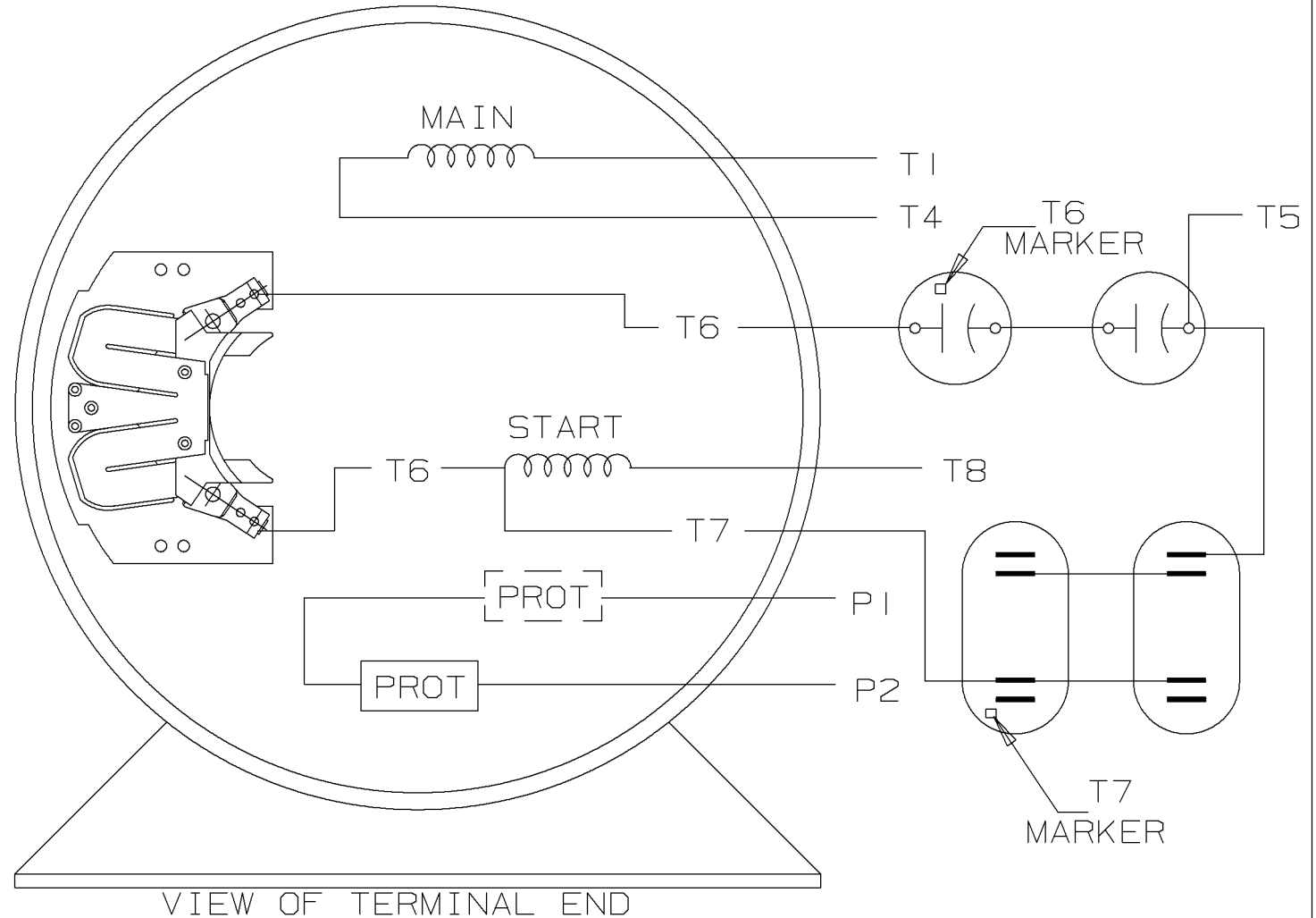
C.W. ROTATION



C.C.W. ROTATION



SINGLE VOLTAGE  
 CAPACITOR START  
 CAPACITOR RUN  
 REVERSIBLE



VIEW OF TERMINAL END

				✓ MAX. SURFACE ROUGHNESS UNLESS NOTED OTHERWISE	UNLESS OTHERWISE SPECIFIED DIMENSIONS ARE IN INCHES TOL. ON XX±    XXX±.005    XXXX±.0005    ANGLES±		
				MATL SPEC	180 - 210 SWITCH		DRAWN BY GK 11-01-1986
				FINISH			CHKD BY ML 11-01-1986
1	11-04-1986	NEW DRAWING	CN 7664C	GK	REFERENCE DRW.	WAUSAU, WISCONSIN 54401	APPD BY FG 11-04-1986
REV	DATE	CHANGE		NAME	PART NAME CONNECTION DIAGRAM		DRWG NO A- EE9048LU

SHOP BOOK

PURCHASED

DISTRIBUTION - WA - LB - WP - LM - BR

CADD FILE NO.

EE9048LU