

PRODUCT INFORMATION PACKET



Model No: 184TADW7003
Catalog No: 184TADW7003
7.5,3600,DP,184JM,1/60/230

Regal and Marathon are trademarks of Regal Rexnord Corporation or one of its affiliated companies.
©2023 Regal Rexnord Corporation, All Rights Reserved. MC017097E



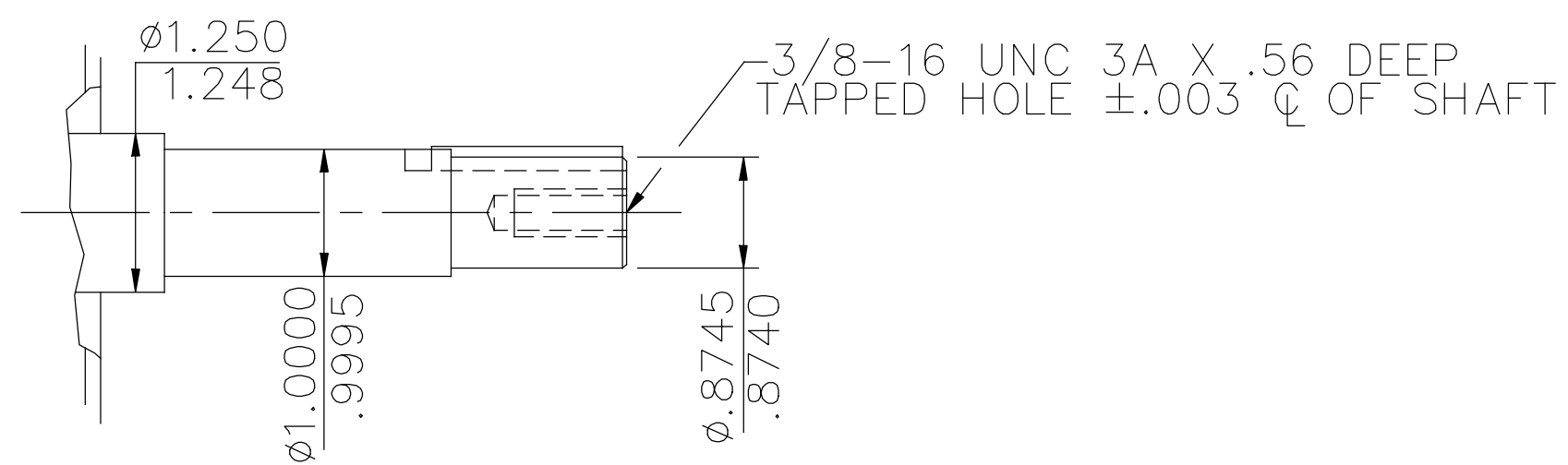
Nameplate Specifications

Phase	1	Output HP	7.50 Hp
Output KW	5.6 kW	Voltage	230 V
Speed	3490 rpm	Service Factor	1.15
Frame	184JM	Enclosure	Drip Proof
Thermal Protection	No Protection	Efficiency	82.5 %
Ambient Temperature	40 °C	Frequency	60 Hz
Current	30.5 A	Power Factor	98.2
Duty	Continuous	Insulation Class	F
Design Code	NO DESIGN CODE	KVA Code	F
Drive End Bearing Size	6207	Opp Drive End Bearing Size	6205
UL	Recognized	CSA	Y
CE	Y	IP Code	12
Number of Speeds	1		

Technical Specifications


Electrical Type	Permanent Split Capacitor	Starting Method	Across The Line
Poles	2	Rotation	Selective Counterclockwise
Resistance Main	.2345 Ohms	Mounting	Rigid Base
Motor Orientation	Horizontal	Drive End Bearing	Ball
Opp Drive End Bearing	Ball	Frame Material	Rolled Steel
Shaft Type	JM	Assembly/Box Mounting	F1 ONLY
Outline Drawing	036378-1200	Connection Drawing	005368.06

This is an uncontrolled document once printed or downloaded and is subject to change without notice. Date Created:12/12/2023



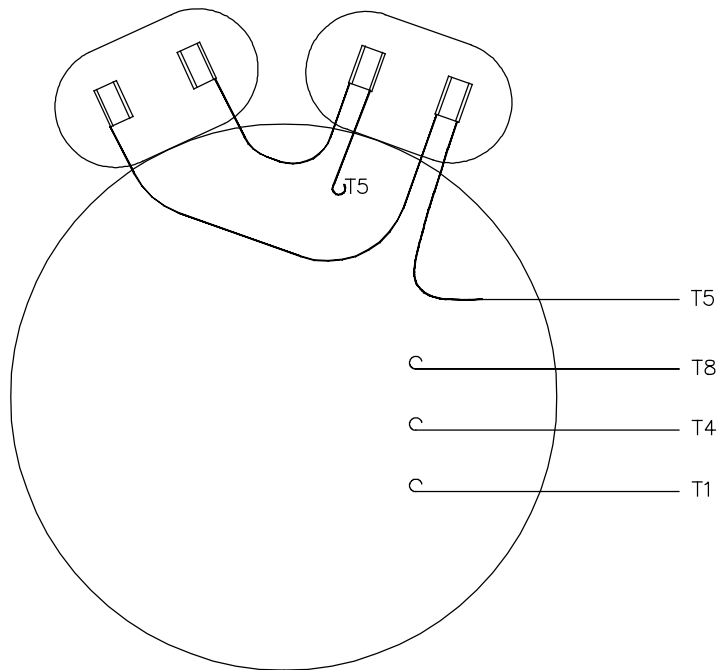
SHAFT DETAIL

GASKETS THROUGHOUT
MAXIMUM FACE RUNOUT TO BE .004 T.I.R.
MAXIMUM PILOT ECCENTRICITY TO BE .004 T.I.R.
PERMISSIBLE SHAFT RUNOUT TO BE .002 T.I.R.

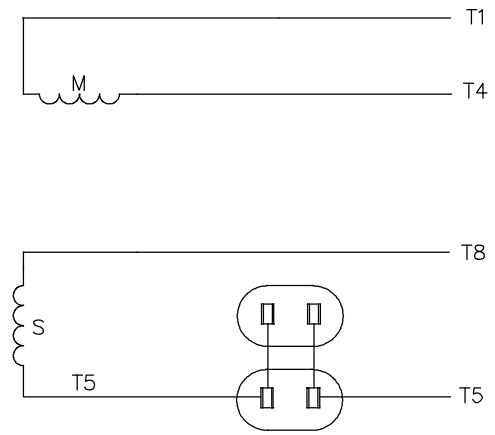
							TOLERANCES UNLESS SPECIFIED		 Regal Beloit America, Inc.				DRAWN MVG 01/16/2018	
							DEC. INCHES						CHK GR 01/16/2018	
DASH NO.	"C"	"AD"					.X ±.1		REGAL ™ TITLE OUTLINE— 180T FRAME DRIP PROOF— JM — ROUND				APPD GR 01/16/2018	
1000	15.90	5.87					.XX ±.03						SCALE 3=8	
1050	16.40	6.37					.XXX ±.005						REF 035845	
1100	16.90	6.87	A	NEW DRAWING	MVG 01/16/18	GR	.XXXX	±.0005	MAT'L.				FMF CENTURY	
1150	17.40	7.37	NO.	REVISION	BY & DATE	CHK	ANG	±1/2"	FINISH				PREV	
1200	17.90	7.87	THIS DRAWING IN DESIGN AND DETAIL IS OUR PROPERTY AND MUST NOT BE USED EXCEPT IN CONNECTION WITH OUR WORK ALL RIGHTS OF DESIGN AND INVENTION ARE RESERVED THIS IS AN ELECTRONICALLY GENERATED DOCUMENT — DO NOT SCALE THIS PRINT				RFP		CAD FILE 036378		SIZE	DRAWING NO.		REV.
1250	18.40	8.37					DIST		B		036378		A	

005368-06

VIEW FROM OUTSIDE OF MOTOR AT SWITCH END.



LINE LEADS

ROTATION
FACING
LEAD END

L1

L2

C.W.


T1,T5

T4,T8

C.C.W

T1,T8

T4,T5

				TOLERANCES UNLESS SPECIFIED		 Regal Beloit America, Inc.	DRAWN MVG 01/24/2018				
				DEC.	INCHES		CHK	GR 01/24/2018			
				.X	±.1		APPD	GR 01/24/2018			
				.XX	±.01		SCALE	1=1			
				.XXX	±.005	TITLE		EXTERNAL WIRING DIAGRAM TPYE "P" W/O PROTECTOR	REF	005058-03	
A	NEW DRAWING	MVG 01/24/18	GR	.XXXX	±.0005	MAT'L		DECAL 004018	FMF	121529.00	
NO.	REVISION	BY & DATE	CHK	ANG	±1/2"	FINISH			PREV		
THIS DRAWING IN DESIGN AND DETAIL IS OUR PROPERTY AND MUST NOT BE USED EXCEPT IN CONNECTION WITH OUR WORK ALL RIGHTS OF DESIGN AND INVENTION ARE RESERVED THIS IS AN ELECTRONICALLY GENERATED DOCUMENT – DO NOT SCALE THIS PRINT			RFP		CAD FILE			00536806	SIZE	DRAWING NO.	REV.
			DIST					A	005368-06	A	

Data Sheet

Date: 9/21/2023

Customer: _____

Attention: _____

Submitted By: _____



Model No.: 184TADW7003

Winding: P827

Submittal

Data @ 230 V

Motor Load Data

Load	0%	25%	50%	75%	100%	115%	
Current (Amps)	9.2	13.1	18.3	24.2	30.4	34.4	
Efficiency (%)	14.0	54.0	71.1	78.0	82.5	82.3	
P.F. (%)	0.7	86.0	93.0	96.7	98.2	98.8	

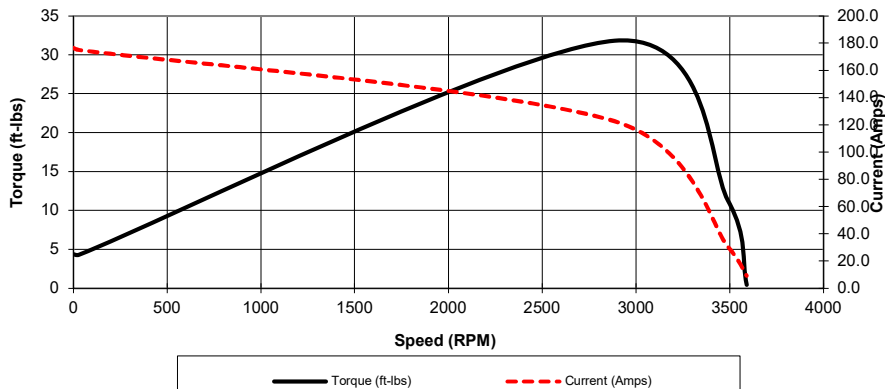
Motor Speed Data

	Locked Rotor	Pull-Up	Breakdown	Rated Load	Idle
Speed (RPM)	0	30	2885	3490	3590
Current (Amps)	176.5	175.0	122.7	30.4	9.2
Torque (ft-lbs)	4.38	4.3	31.8	11.3	0.419

Information Block

HP	7.5
Sync. RPM	3600
Frame	184JM
Enclosure	DP
Motor Type	DR
Voltage	230 V
Frequency	60 Hz
Design	NO DESIGN CODE
LR Code letter	F
Service Factor	1.15
Temp Rise @ FL	42 ° C
Ambient	40 ° C
Rotor/Shaft wk ²	- Lb-Ft ²
Insulation Class	F
VFD Rating	NA
Sound Pressure @ 1M	- dBA
Outline Dwg	036378-1200
Conn. Diag	005368.06
Additional Specifications:	
0	

Motor Speed Data



Motor Load Data

