

# PRODUCT INFORMATION PACKET

**marathon®**  
Motors

Model No: 182TTTS6501

Catalog No: E601

XRI®-SD Severe Duty Motor, 3 HP, 3 Ph, 60 Hz, 460 V, 3600 RPM, 182T Frame, TENV



Regal and Marathon are trademarks of Regal Rexnord Corporation or one of its affiliated companies.  
©2022 Regal Rexnord Corporation, All Rights Reserved. MC017097E

**RegalRexnord**

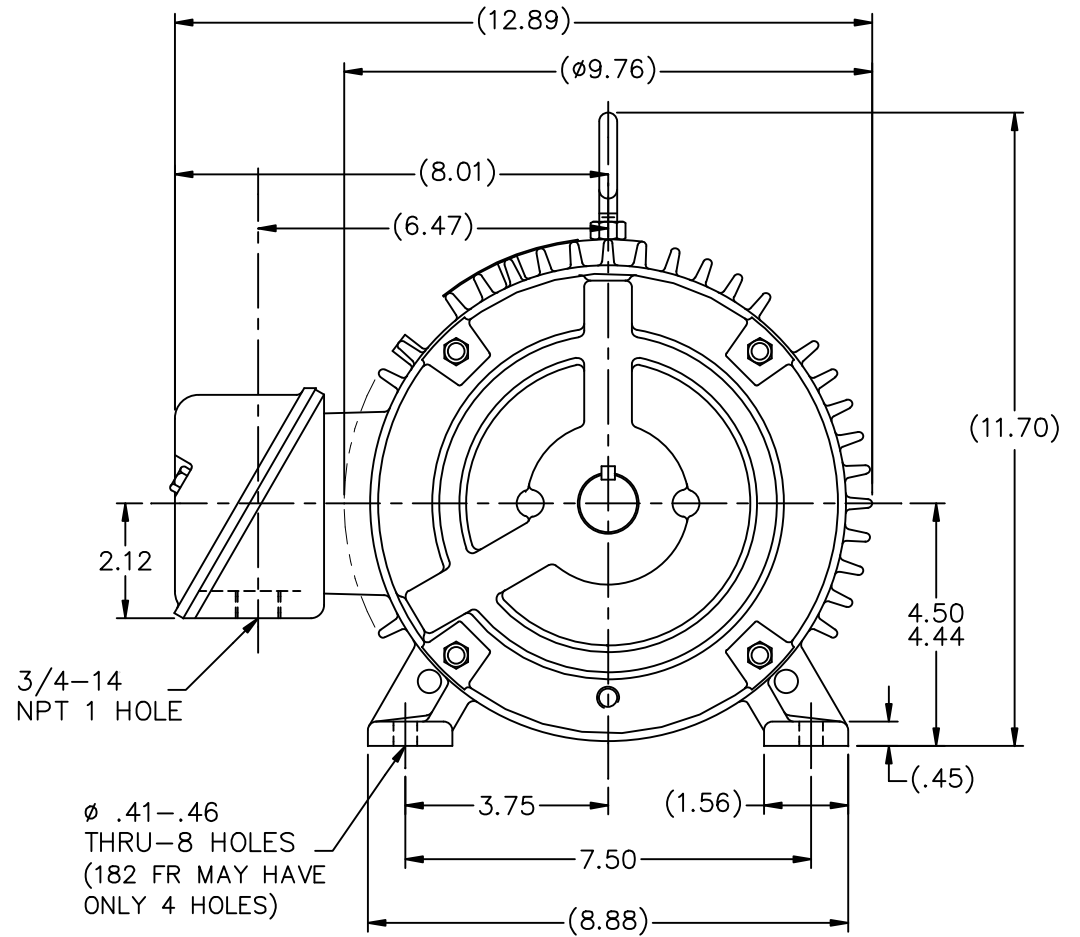
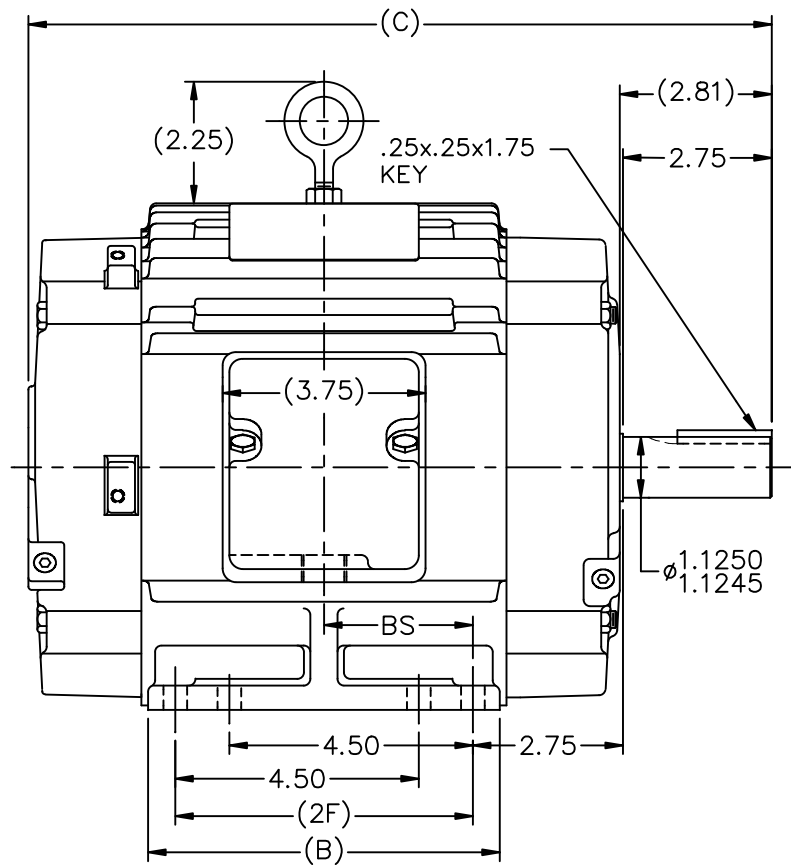
## Nameplate Specifications

Output HP	3 Hp	Output KW	2.2 kW
Frequency	60 Hz	Voltage	460 V
Current	3.8 A	Speed	3525 rpm
Service Factor	1.15	Phase	3
Efficiency	89.5 %	Power Factor	85
Duty	Continuous	Insulation Class	F
Design Code	B	KVA Code	K
Frame	182T	Enclosure	Totally Enclosed Non Ventilated
Thermal Protection	No Protection	Ambient Temperature	40 °C
Drive End Bearing Size	6206	Opp Drive End Bearing Size	6205
UL	Recognized	CSA	Y
CE	Y	IP Code	54
Hazardous Location	DIVISION 2 T2B	Number of Speeds	1

## Technical Specifications

Electrical Type	Squirrel Cage Inverter Rated	Starting Method	Line Or Inverter
Poles	2	Rotation	Reversible
Resistance Main	3.59 Ohms	Mounting	Rigid Base
Motor Orientation	Horizontal	Drive End Bearing	Ball
Opp Drive End Bearing	Ball	Frame Material	Cast Iron
Shaft Type	T	Overall Length	12.74 in
Frame Length	5.75 in	Shaft Diameter	1.125 in
Shaft Extension	2.81 in	Assembly/Box Mounting	F1/F2 CAPABLE
Inverter Load	CONSTANT 1000:1		
Outline Drawing	A-SS67889-575	Connection Drawing	A-EE7300





ø .41-.46  
THRU-8 HOLES  
(182 FR MAY HAVE  
ONLY 4 HOLES)

DASH	FR.	C	B	2F	BS	MOUNTING
575	182T	12.74	5.50	4.50	2.25	F1 OR F2
675	182/4T	13.74	6.50	5.50	2.75	F1 OR F2
800	182/4T	14.99	7.75	5.50	3.38	F1 ONLY

## NOTES:

1. CONDUIT BOX CAN BE ROTATED IN 90° STEPS.
2. CONDUIT BOX CAN BE MOUNTED ON OPPOSITE SIDE BY REMOVING BRACKETS AND TURNING FRAME 180°.
3. NAMEPLATE TO BE READ FROM CONDUIT BOX SIDE OF MOTOR.

10	REVISED -575 MOUNTING	MU98218	SJW	11/9/2010			
9	SHAFT EXT. WAS 2.72 NOW 2.75	CN46656	RJW	03-15-2007	ML	DEC.	INCHES
8	ADDED 2F DIMENSION TO DASH 575	CN 33528	TAT	04-01-2004	ML	.X	±.1
7	SHOWED PROPER THREAD EXT. LOC.	CN 29200-323	TJB	04-10-2000		.XX	±.03
6	ADDED -675 W/ 182T FRAME & MTGS.	CN 27400-320	CAE	01-17-2000		.XXX	±.005
5	ADDED FOUR MOUNTING HOLES IN BASE	CN 26348	DRS	08-11-1998		.XXXX	±.0005
NO.	REVISION		BY & DATE		CHK	ANG	±7'30"

TOLERANCES UNLESS SPECIFIED
DEC.
INCHES
.X
±.1
.XX
±.03
.XXX
±.005
.XXXX
±.0005
ANG
±7'30"
RFP
DIST LB



TITLE OUTLINE  
180 FR. - BB - TS - TENV

MAT'L.

FINISH

CAD FILE ss67889

SIZE

A

DRAWING NO.

SS67889

PAGE OF

REV.

10

THIS DRAWING IN DESIGN AND DETAIL IS OUR PROPERTY AND MUST NOT BE USED EXCEPT IN CONNECTION WITH OUR WORK ALL RIGHTS OF DESIGN AND INVENTION ARE RESERVED THIS IS AN ELECTRONICALLY GENERATED DOCUMENT - DO NOT SCALE THIS PRINT

THREE PHASE - SINGLE VOLTAGE  
MOTOR - CONDUIT BOX @ 'A'

TO REVERSE ROTATION:  
INTERCHANGE ANY TWO LINE  
LEAD CONNECTIONS

TERMINAL BLOCK WHEN SPECIFIED

IF MOTOR HAS 9 LEADS

T1(U1) T1(U1) T1(U1) → L1

T2(V1) T2(V1) T2(V1) → L2

T3(W1) T3(W1) T3(W1) → L3

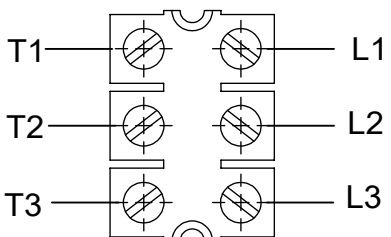
IF MOTOR HAS 6 LEADS

T1(U1) T1(U1) → L1


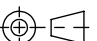
T2(V1) T2(V1) → L2

T3(W1) T3(W1) → L3

A-9806 DECAL



OPTIONAL CORD CONNECTION	
L1	WHITE
L2	RED
L3	BLACK

DRAWING REVISION AC		REVISION BY BS	REV DATE/© DATE 26/07/2022	PRIMARY DIMENSIONS ARE INCH mm DIMENSIONS IN [BRACKETS] ARE FOR REFERENCE ONLY	DRAWN BY DA		<div></div> <div>Regal Beloit America, Inc.</div>			
REQUEST NUMBER CR-0010402		APPROVED BY SN	DATE 26/07/2022		DATE 03-26-1993					
REQUEST NUMBER DESCRIPTION DRAWING UPDATED					APPROVED BY TB		DESCRIPTION CONNECTION DIAGRAM EXTERNAL - SINGLE VOLTAGE - 3Ø MOTOR			
					DATE 03-26-1993					
COPYRIGHT (PER REVISION DATE) REGAL BELOIT AMERICA, INC. ALL RIGHTS RESERVED. PROPRIETARY AND CONFIDENTIAL INFORMATION - THIS DOCUMENT IS THE PROPERTY OF REGAL BELOIT AMERICA, INC. ("OWNER") AND CONTAINS OWNER'S PROPRIETARY INFORMATION. ANY PERSON, CORPORATION OR OTHER FIRM RECEIVING IT IS DEEMED, BY RECEIVING IT, TO AGREE THAT IT, AND/OR ANY PART OF IT, SHALL NOT BE DISCLOSED TO ANY PERSON, CORPORATION OR OTHER ENTITY, DUPLICATED, AND/OR USED, EXCEPT AS EXPRESSLY APPROVED IN WRITING IN ADVANCE BY OWNER. THIS DOCUMENT SHALL BE RETURNED TO OWNER UPON REQUEST. IT MAY BE SUBJECT TO CERTAIN RESTRICTIONS UNDER APPLICABLE EXPORT CONTROL LAWS AND REGULATIONS.					REFERENCE		MATERIAL		PROCESS/FINISH	
					THIRD ANGLE PROJECTION 		SIZE A		DRAWING NUMBER EE7300	

## CERTIFICATION DATA SHEET

Model#: 182TTTS6501 BB

WINDING#: 182258 TS 7

CONN. DIAGRAM: A-EE7300

ASSEMBLY: F1/F2 CAPABLE

OUTLINE: A-SS67889-575

## TYPICAL MOTOR PERFORMANCE DATA

HP	KW	SYNC. RPM	F.L. RPM	FRAME	ENCLOSURE	KVA CODE	DESIGN
3	2.24	3600	3525	182T	TENV	K	B

PH	Hz	VOLTS	FL AMPS	START TYPE	DUTY	INSL	S.F	AMB°C	ELEVATION
3	60	460	3.8	LINE OR INVERTER	CONTINUOU S	F3	1.15	40	3300

FULL LOAD EFF: 89.5	3/4 LOAD EFF: 88.5	1/2 LOAD EFF: 85.5	GTD. EFF	ELEC. TYPE	NO LOAD AMPS
FULL LOAD PF: 85	3/4 LOAD PF: 77	1/2 LOAD PF: 65.5	87.5	SQ CAGE INV RATED	1.7

F.L. TORQUE	LOCKED ROTOR AMPS	L.R. TORQUE	B.D. TORQUE	F.L. RISE°C
4.5 LB-FT	29	9 LB-FT 200	15.8 LB-FT 351	65

SOUND PRESSURE @ 3 FT.	SOUND POWER	ROTOR WK^2	MAX. WK^2	SAFE STALL TIME	STARTS /HOUR	APPROX. MOTOR WGT
65 dBA	75 dBA	0.23 LB-FT^2	4 LB-FT^2	15 SEC.	2	80 LBS.

## \*\*\* SUPPLEMENTAL INFORMATION \*\*\*

DE BRACKET TYPE	ODE BRACKET TYPE	MOUNT TYPE	ORIENTATION	SEVERE DUTY	HAZARDOUS LOCATION	DRIP COVER	SCREENS	PAINT
STANDARD	STANDARD	RIGID	HORIZONTAL	PREMIUM SEVERE DUTY	DIVISION 2 T2B	FALSE	NONE	BLUE (EPOXY)

BEARINGS		GREASE	SHAFT TYPE	SPECIAL DE	SPECIAL ODE	SHAFT MATERIAL	FRAME MATERIAL
DE	OPE						
BALL	BALL						
6206	6205	POLYREX EM	T	NONE	NONE	1144 STRESSPROOF (C-223)	CAST IRON

THERMO-PROTECTORS				THERMISTORS	CONTROL	SPACE /n HEATERS
THERMOSTATS	PROTECTORS	WDG RTDs	BRG RTDs			
NONE	NOT	NONE	NONE	NONE	FALSE	NONE VOLTS

If Inverter equals NONE, contact factory for further information

INVERTER TORQUE: CONSTANT 20:1		
INV. HP SPEED RANGE: 1.5 X BASE SPEED		
ENCODER: NONE		
NONE NONE		
NONE NONE PPR		
BRAKE: NONE NONE		
NONE P/N NONE		
NONE NONE		
NONE FT-LB	NONE V	NONE Hz

\*  
N  
O  
T  
E  
S  
\*

DATE: 06/27/2017 03:49:44 AM

FORM 3531 REV.3 02/07/99

\*\* Subject to change without notice.

## Data Sheet

Date: 20-06-2017

Customer:

Attention:

Submitted by: FAREEDA DUDEKULA

182TTTS6501



Submittal

Data @ 460 V

## Motor Load Data

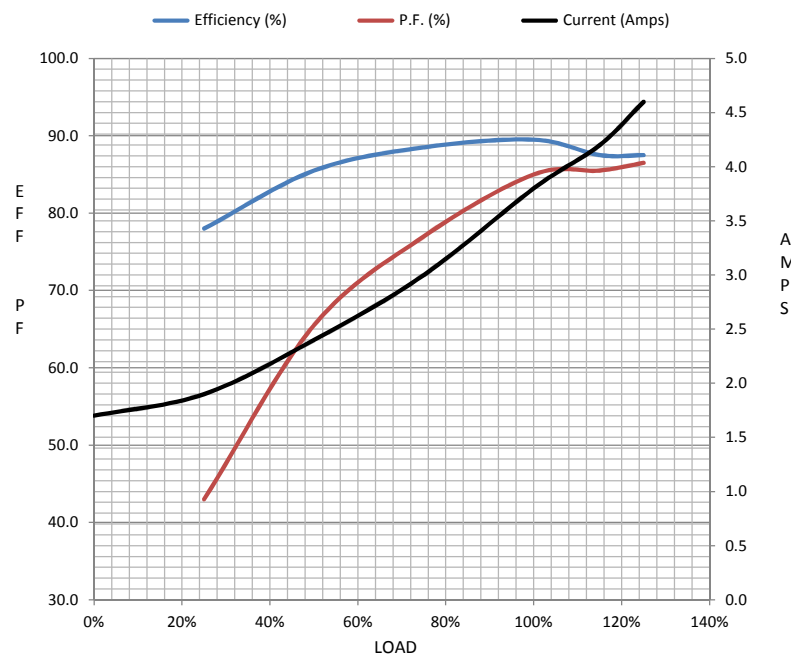
Load	0%	25%	50%	75%	100%	115%	125%	LR	
Current (Amps)	1.70	1.90	2.40	3.0	3.8	4.2	4.6	29.0	
Torque (ft-lb)	0.00	1.10	2.20	3.3	4.5	5.2	5.6	9.0	
RPM	3600	3582	3562	3544	3525	3505	3490	0	
Efficiency (%)		78.0	85.5	88.5	89.5	87.5	87.5		
P.F. (%)	6.5	43.0	65.5	77.0	85.0	85.5	86.5	39.5	

## Motor Speed Data

	LR	Pull-Up	BD	Rated	Idle
Speed (RPM)	0	1800	3115	3525	3600
Current (Amps)	29.0	26.0	18.0	3.8	1.70
Torque (ft-lb)	9.0	6.8	15.8	4.5	0.00

## Information Block

HP	3.0			
Sync. RPM	3600			
Frame	182			
Enclosure	TENV			
Construction	TTS			
Voltage	460 V			
Frequency	60 Hz			
Design	B			
LR Code letter	K			
Service Factor	1.15			
Temp Rise @ FL	65 ° C			
Duty	CONT			
Ambient	40 ° C			
Elevation	1,000 feet			
Rotor/Shaft wk²	0.23 Lb-Ft²			
Ref Wdg	182258 TS			
Sound Pressure @ 1M	65 dBA			
VFD Rating	CONSTANT 20:1			
Outline Dwg	A-SS67889-575			
Conn. Diag	A-EE7300			
Additional Specifications:				
0				
365THFS8036				
EQUIV CKT (OHMS / PHASE)				
R1	R2	X1	X2	Xm
1.7780	2.0150	7.3220	2.4500	167.4420



## Speed -Torque Curve

