

# PRODUCT INFORMATION PACKET



Model No: 182TTGCD36026  
Catalog No: 182TTGCD36026  
3,1800,EPFC,182TCVZ,3/60/230/460

Regal and Marathon are trademarks of Regal Rexnord Corporation or one of its affiliated companies.  
©2023 Regal Rexnord Corporation, All Rights Reserved. MC017097E



**Nameplate Specifications**

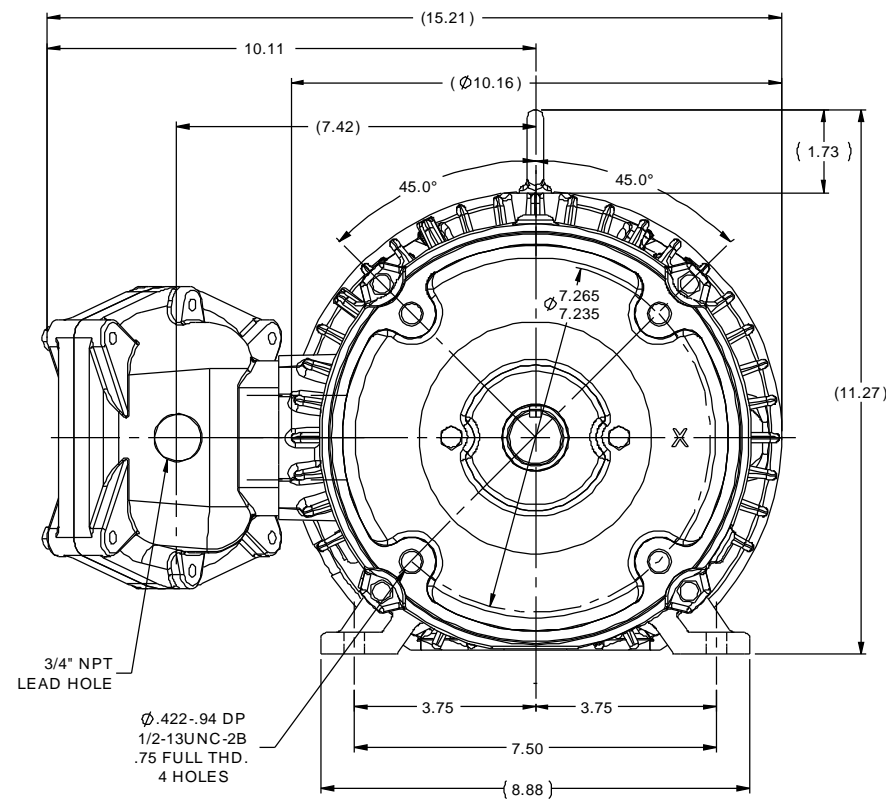
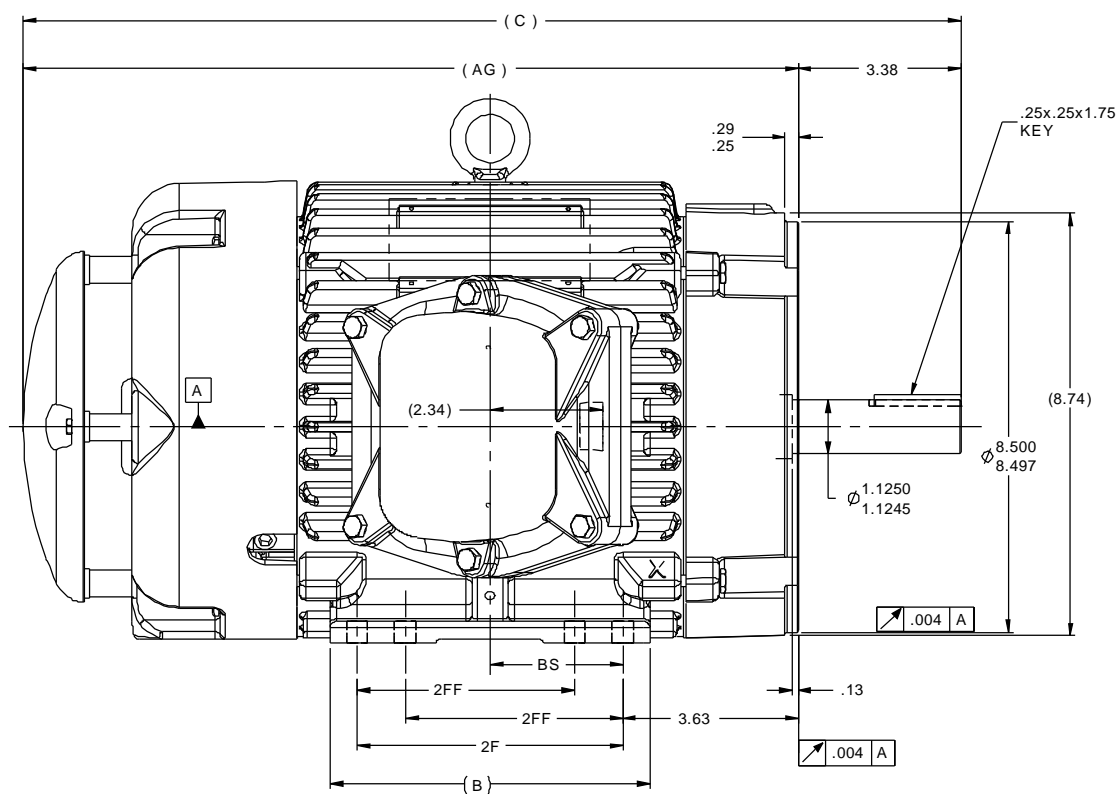
Phase	3	Output HP	3 Hp
Output KW	2.2 kW	Voltage	230/460 V
Speed	1762 rpm	Service Factor	1.15
Frame	182TCVZ	Enclosure	Explosion Proof Fan cooled
Thermal Protection	Thermostat	Efficiency	89.5 %
Ambient Temperature	40 °C	Frequency	60 Hz
Current	8.0/4.0 A	Power Factor	78
Duty	Continuous	Insulation Class	F
Design Code	B	KVA Code	K
Drive End Bearing Size	6207	Opp Drive End Bearing Size	6206
UL	UL Listed And CSA Certified	CSA	Y
CE	N	IP Code	54
Number of Speeds	1	Hazardous Location	EXP PROOF CL I GR C&D CL II GR F&G T3B

**Technical Specifications**

Electrical Type	Squirrel Cage Inverter Rated	Starting Method	Line Or Inverter
Poles	4	Rotation	Reversible
Resistance Main	4.15 Ohms	Mounting	Rigid Base
Motor Orientation	Shaft Down	Drive End Bearing	Ball
Opp Drive End Bearing	Ball	Frame Material	Cast Iron
Shaft Type	Single Special Extension	Shaft Diameter	1.125 in
Assembly/Box Mounting	W6	Inverter Load	CONSTANT 10:1
Outline Drawing	036007-800	Connection Drawing	A-EE7308BT

This is an uncontrolled document once printed or downloaded and is subject to change without notice. Date Created:04/24/2023

036007



## NOTES:

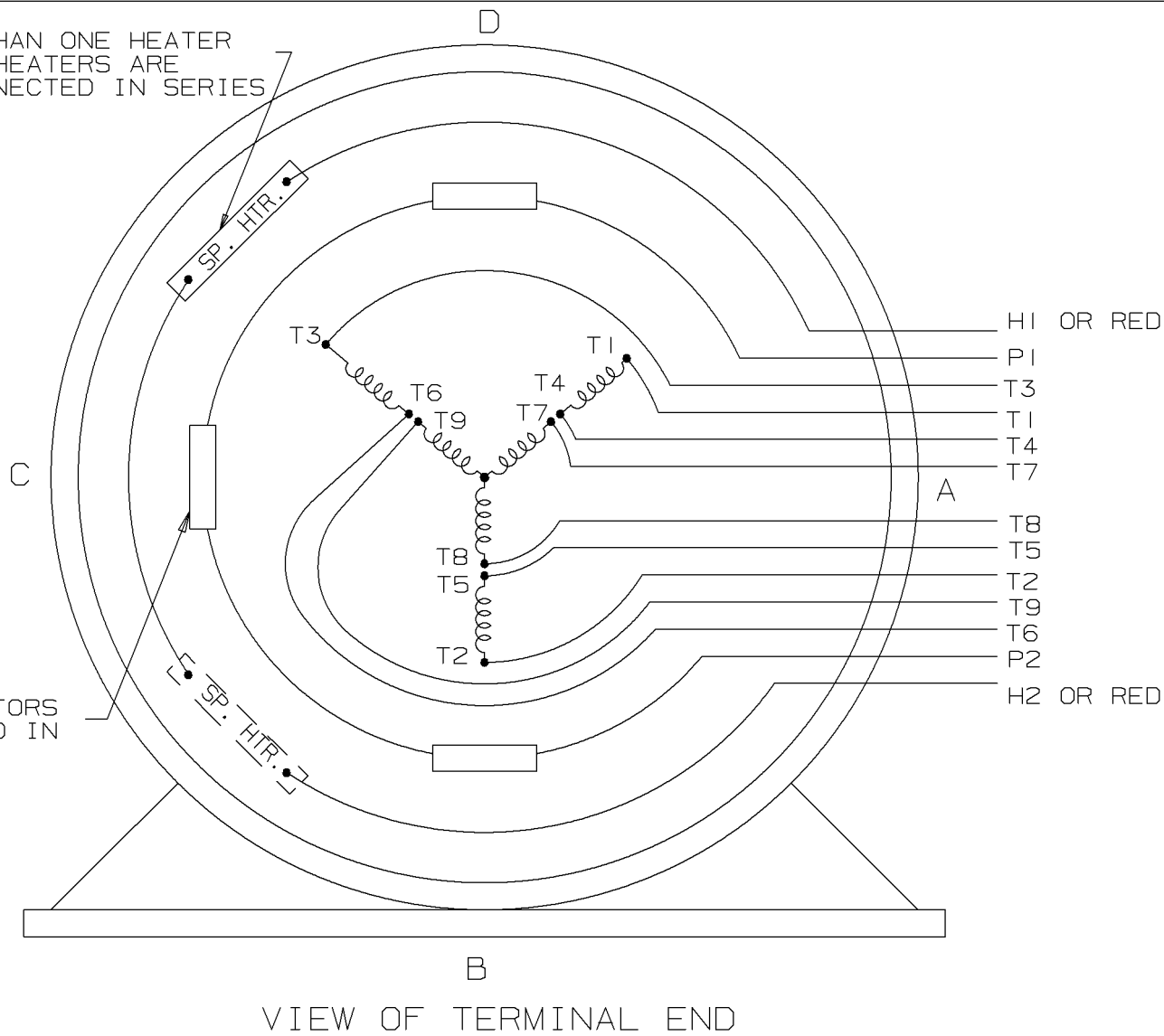
1. NAMEPLATE TO BE READ FROM CONDUIT BOX SIDE OF MOTOR.
2. CONDUIT BOX CAN ROTATED IN 90° STEPS.
3. CONDUIT BOX CAN BE MOUNTED ON OPPOSITE SIDE BY REMOVING BRACKETS AND TURNING FRAME 180° THIS MODIFICATION CAN BE PERFORMED ONLY BY THE ORIGINAL EQUIPMENT MANUFACTURER, OR BY A FACILITY THAT IS COVERED UNDER UNDERWRITERS LABORATORIES INC. CATEGORY PTKQ. TITLED "MOTORS AND GENERATORS REBUILT FOR USE IN HAZARDOUS LOCATIONS".

1000	184	21.41	18.04	8.61	5.50	7.50	3.75
800	182/184	19.41	16.04	6.61	4.50	5.50	2.75
DASH	FRAME	C	AG	B	2FF	2F	BS

				TOLERANCES UNLESS SPECIFIED		MARATHON ELECTRIC	DRAWN UD 08/19/13	
				DEC	INCHES		CHK SR 08/19/13	
				X	±.1		APPR	
				XX	±.03	TITLE OUTLINE-EPFC RIGID FRAME - C' FACE - SPL SHAFT 180 FR. - CAST C'BOX	SCALE 7:16	
				XXX	±.005		REF 035733.00	
				XXXX	±.0005		FMF	
NO	REVISION	BY & DATE	CHK ANG ±7°30"	FINISH			PREV	
THIS DRAWING IN DESIGN AND DETAIL IS OUR PROPERTY AND MUST NOT BE USED EXCEPT IN CONNECTION WITH OUR WORK. ALL RIGHTS OF DESIGN AND INVENTION ARE RESERVED. THIS IS AN ELECTRONICALLY GENERATED DOCUMENT - DO NOT SCALE THIS PRINT				RFP	CAD FILE 036007	SIZE B	DRAWING NO 036007	REV
				DIST	WA - NLV			

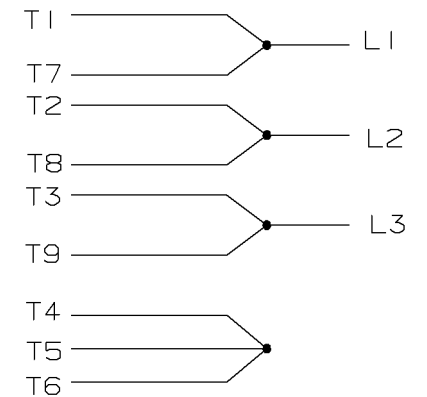
NOTE:  
IF MORE THAN ONE HEATER  
IS USED, HEATERS ARE  
TO BE CONNECTED IN SERIES

NOTE:  
3 PROTECTORS  
CONNECTED IN  
SERIES

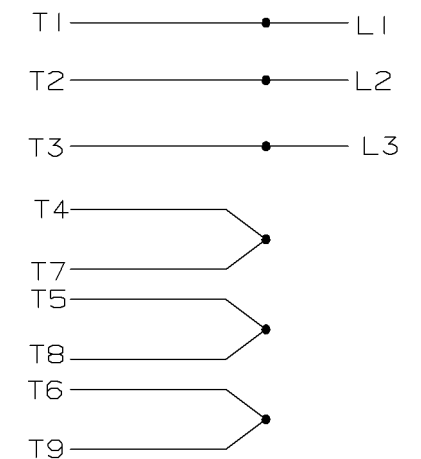



A- EE7308BT

## LOW VOLTAGE



## HIGH VOLTAGE



				✓ MAX. SURFACE ROUGHNESS UNLESS NOTED OTHERWISE	UNLESS OTHERWISE SPECIFIED DIMENSIONS ARE IN INCHES TOL. ON XX±.020    XXX±.005    XXXX±.0005    ANGLES± 7°30"					
				MATL SPEC				DRAWN BY PGK	09-18-1996	
				FINISH				CHKD BY KL	10-01-1996	
2	10-01-1996	REDRAWN ON CADD & REVISE TO HAVE LEADS FOR HEATER MARK HI OR H2    CN 22696	PGK	REFERENCE DRW.	WAUSAU, WISCONSIN 54401			APPD BY ML	10-01-1996	
REV	DATE	CHANGE	NAME	PART NAME    CONNECTION DIAGRAM THREE PHASE - DUAL VOLTAGE MOTOR					DRWG NO A - EE7308BT	
		SHOP BOOK	PURCHASED	DISTRIBUTION - WA - LB - WP - LM - BR			CADD FILE NO.	EE7308BT		

SHOP BOOK

PURCHASED

DISTRIBUTION - WA - LB - WP - LM - BR

CADD FILE NO.

EE7308BT