

# PRODUCT INFORMATION PACKET

Model No: 182TTGCD16003

Catalog No: C303C

Hazardous Duty® Explosion Proof Motor, 3 & 2 HP, 3 Ph, 60 & 50 Hz, 230/460 & 190/380 V,  
3600 & 3000 RPM, 182TC Frame, EPFC



Regal and Marathon are trademarks of Regal Rexnord Corporation or one of its affiliated companies.  
©2023 Regal Rexnord Corporation, All Rights Reserved. MC017097E

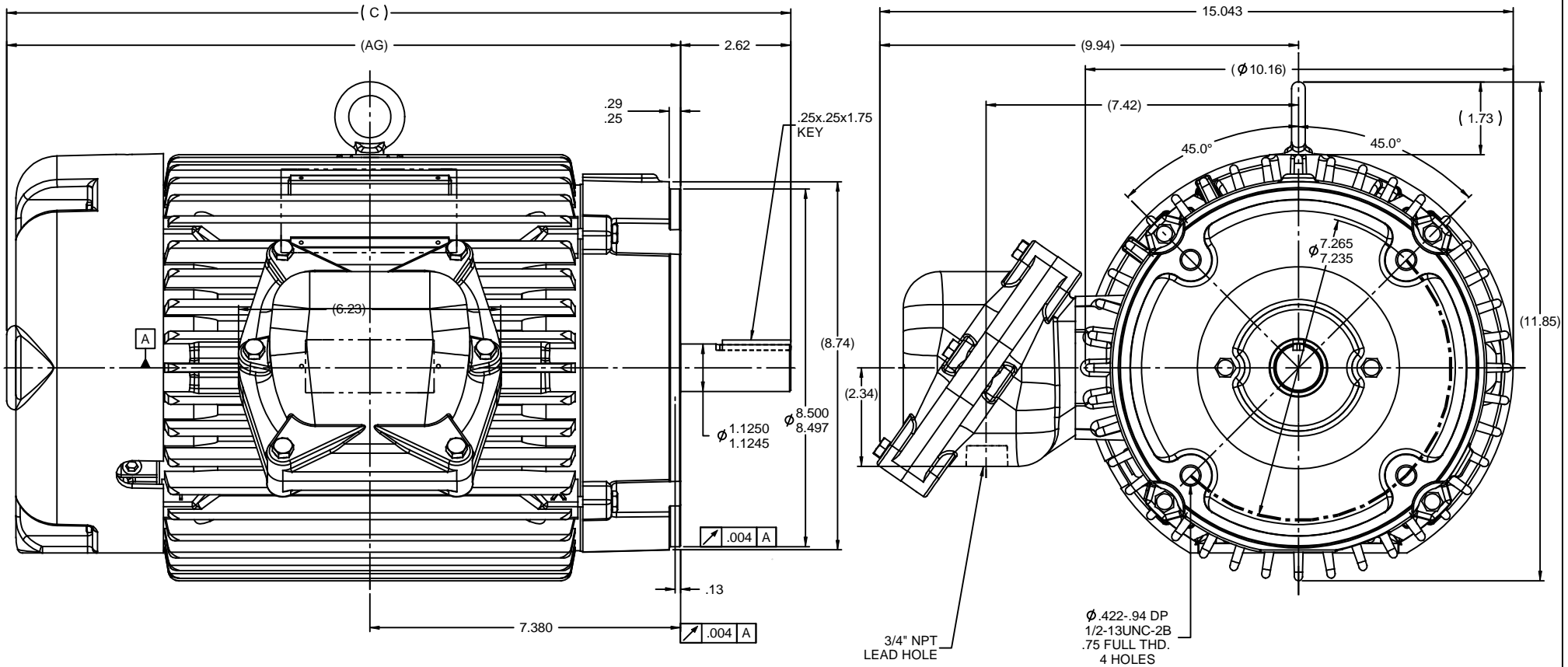
### Nameplate Specifications

Phase	<b>3</b>	Output HP	<b>3 &amp; 2 Hp</b>
Output KW	<b>2.2 &amp; 1.5 kW</b>	Voltage	<b>230/460 &amp; 190/380 V</b>
Speed	<b>3535 &amp; 2935 rpm</b>	Service Factor	<b>1.00 &amp; 1.00</b>
Frame	<b>182TC</b>	Enclosure	<b>Explosion Proof Fan cooled</b>
Thermal Protection	<b>Thermostat</b>	Efficiency	<b>86.5 &amp; 84 %</b>
Ambient Temperature	<b>50 °C</b>	Frequency	<b>60 &amp; 50 Hz</b>
Current	<b>8/4 &amp; 6.8/3.4 A</b>	Power Factor	<b>82</b>
Duty	<b>Continuous</b>	Insulation Class	<b>F</b>
Design Code	<b>B</b>	KVA Code	<b>K</b>
Drive End Bearing Size	<b>6207</b>	Opp Drive End Bearing Size	<b>6206</b>
UL	<b>UL Listed And CSA Certified</b>	CSA	<b>Y</b>
CE	<b>N</b>	IP Code	<b>54</b>
Number of Speeds	<b>1</b>	Hazardous Location	<b>DIV 1 EXP PROOF CL I GR CD CL II GR FG T3C</b>

### Technical Specifications

Electrical Type	<b>Squirrel Cage Inverter Rated</b>	Starting Method	<b>Line Or Inverter</b>
Poles	<b>2</b>	Rotation	<b>Reversible</b>
Resistance Main	<b>5.72 Ohms</b>	Mounting	<b>Round</b>
Motor Orientation	<b>Horizontal</b>	Drive End Bearing	<b>Ball</b>
Opp Drive End Bearing	<b>Ball</b>	Frame Material	<b>Cast Iron</b>
Shaft Type	<b>T</b>	Shaft Diameter	<b>1.125 in</b>
Assembly/Box Mounting	<b>F1 ONLY</b>	Inverter Load	<b>CONSTANT 10:1</b>
Connection Drawing	<b>EE7308T</b>	Outline Drawing	<b>035694-1000</b>

This is an uncontrolled document once printed or downloaded and is subject to change without notice. Date Created:11/29/2023



NOTES:

1. NAMEPLATE TO BE READ FROM CONDUIT BOX SIDE OF MOTOR.
2. CONDUIT BOX CAN ROTATED IN 90° STEPS.
3. CONDUIT BOX CAN BE MOUNTED ON OPPOSITE SIDE BY REMOVING BRACKETS AND TURNING FRAME 180° THIS MODIFICATION CAN BE PERFORMED ONLY BY MARATHON ELECTRIC OR BY A FACILITY THAT IS COVERED UNDER UNDERWRITERS LABORATORIES INC.PTKQ, TITLED " MOTOR AND GENERATORS, REBUILT FOR USE HAZARDOUS LOCATIONS".

1000	182/184	18.62	16.00	7.38
DASH	FRAME	C	AG	BV

		TOLERANCES UNLESS SPECIFIED			DRAWN ST 8-07-2008
		DEC	INCHES		CHK VV 8-07-2008
		X	±.1		APPR
		.XX	±.03	TITLE OUTLINE-EPFC - C' FACE, ROUND FRAME.	SCALE 7:16
		.XXX	±.005	180 FR. - CAST C'BOX	REF 035673
		.XXX	±.0005	MATL	FMF
NO	REVISION	CHK	ANG	FINISH	PREV
THIS DRAWING IN DESIGN AND DETAIL IS OUR PROPERTY AND MUST NOT BE USED EXCEPT IN CONNECTION WITH OUR WORK. ALL RIGHTS OF DESIGN AND INVENTION ARE RESERVED. THIS IS AN ELECTRONICALLY GENERATED DOCUMENT - DO NOT SCALE THIS PRINT		RFP		CAD FILE 035694	SIZE B
		DIST	WA - NLV		DRAWING NO 035694
					REV



Data Sheet

182TTGCD16003



Date: 7/26/2022  
 Customer: \_\_\_\_\_  
 Attention: \_\_\_\_\_  
 Submitted by: \_\_\_\_\_

Submittal

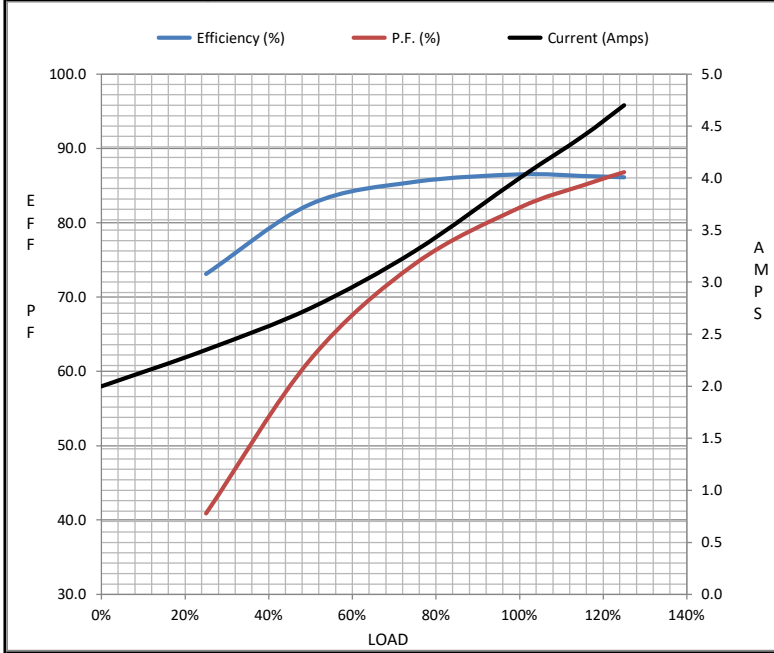
Data @ 460 V

Motor Load Data

Load	0%	25%	50%	75%	100%	115%	125%	LR	
Current (Amps)	2.00	2.35	2.75	3.3	4.0	4.4	4.7	32.0	
Torque (ft-lb)	0.00	1.10	2.20	3.3	4.5	5.2	5.6	9.0	
RPM	3600	3585	3570	3545	3535	3,529	3520	0	
Efficiency (%)		73.1	82.5	85.5	86.5	86.3	86.1		
P.F. (%)	10.8	40.9	61.6	74.5	82.0	85.0	86.8	55.5	

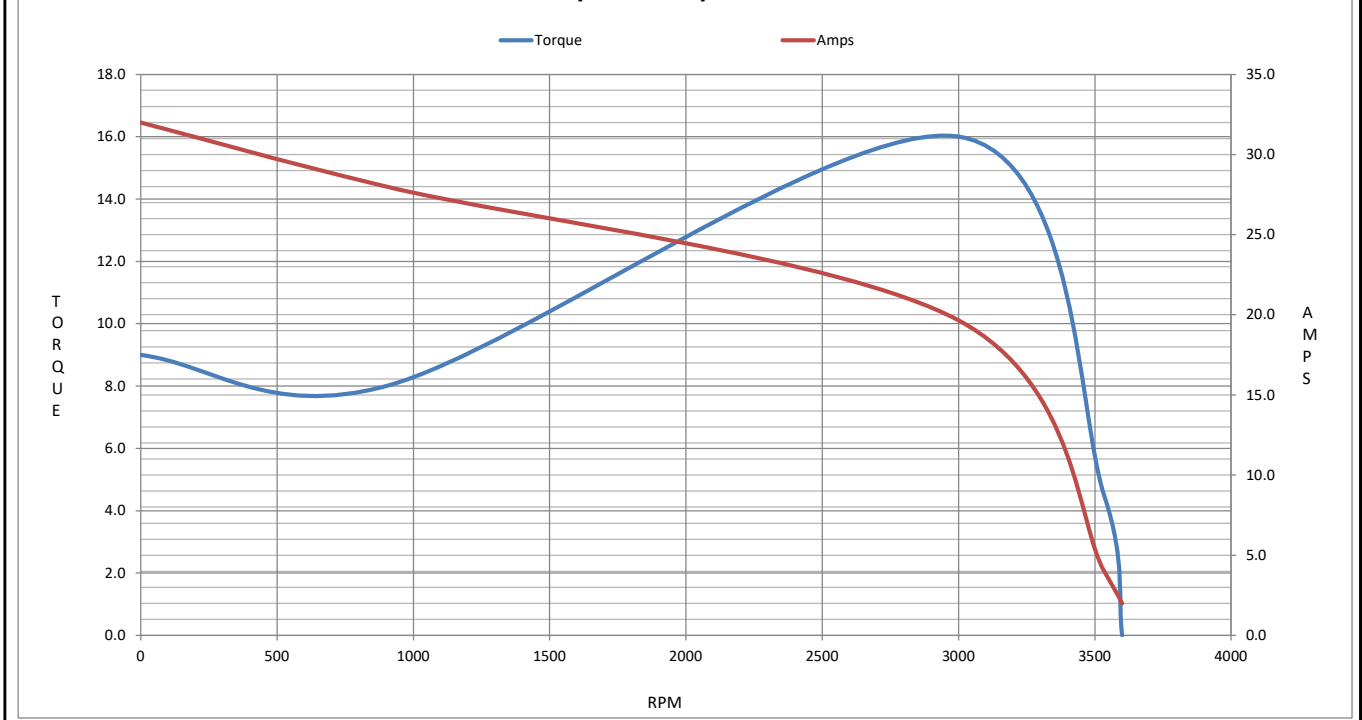
Motor Speed Data

	LR	Pull-Up	BD	Rated	Idle	Information Block				
Speed (RPM)	0	900	3000	3535	3600	HP	3.0			
Current (Amps)	32.0	28.0	19.7	4.0	2.00	Sync. RPM	3600			
Torque (ft-lb)	9.0	8.0	16.0	4.5	0.00	Frame	182			
						Enclosure	EPFC			
						Construction	TFC			
						Voltage	230/460#190/380 V			
						Frequency	60 Hz			
						Design	B			
						LR Code letter	K			
						Service Factor	1.0			
						Temp Rise @ FL	35 ° C			
						Duty	CONT			
						Ambient	40 ° C			
						Elevation	3,300 feet			
						Rotor/Shaft wk <sup>2</sup>	0.18 Lb-Ft <sup>2</sup>			
						Ref Wdg	HA31122014 R1			
						Sound Pressure @ 1M	70 dBA			
						VFD Rating	NONE			
						Outline Dwg				
						Conn. Diag	EE7308T			
						Additional Specifications:				
						0				
						0				
						EQUIV CKT (OHMS / PHASE)				
						R1	R2	X1	X2	Xm
						3.3680	1.4660	5.7990	1.7690	121.5890



HP	3.0			
Sync. RPM	3600			
Frame	182			
Enclosure	EPFC			
Construction	TFC			
Voltage	230/460#190/380 V			
Frequency	60 Hz			
Design	B			
LR Code letter	K			
Service Factor	1.0			
Temp Rise @ FL	35 ° C			
Duty	CONT			
Ambient	40 ° C			
Elevation	3,300 feet			
Rotor/Shaft wk <sup>2</sup>	0.18 Lb-Ft <sup>2</sup>			
Ref Wdg	HA31122014 R1			
Sound Pressure @ 1M	70 dBA			
VFD Rating	NONE			
Outline Dwg				
Conn. Diag	EE7308T			
Additional Specifications:				
0				
0				
EQUIV CKT (OHMS / PHASE)				
R1	R2	X1	X2	Xm
3.3680	1.4660	5.7990	1.7690	121.5890

Speed -Torque Curve



# CERTIFICATE OF COMPLIANCE

**Certificate Number** 20220217- E12044  
**Report Reference** E12044-20090313  
**Issue Date** 2022-FEBRUARY-17

**Issued to:** REGAL BELOIT AMERICA INC  
1946 W COOK RD  
FORT WAYNE IN 46818

Tradename: Marathon

**This certificate confirms that  
representative samples of**

MOTORS FOR USE IN HAZARDOUS LOCATIONS  
Electric motors for use in hazardous locations; Class I,  
Groups C and D; Class II, Groups F and G; Inclusive of  
Model Number 182TTGCD16003 (may have prefix and/or  
suffix characters).

Have been investigated by UL in accordance with the  
Standard(s) indicated on this Certificate.

**Standard(s) for Safety:** UL 674 - Electric Motors and Generators for Use in Division  
1 Hazardous (Classified) Locations,  
CSA C22.2 No. 145, Electric Motors and Generators for  
Use in Hazardous (Classified) Locations

**Additional Information:** See the UL Online Certifications Directory at  
<https://iq.ulprospector.com> for additional information.

This *Certificate of Compliance* does not provide authorization to apply the UL Mark. Only the UL Follow-Up  
Services Procedure provides authorization to apply the UL Mark.

Only those products bearing the UL Mark should be considered as being UL Certified and covered under UL's  
Follow-Up Services.

Look for the UL Certification Mark on the product.

This is to certify that representative samples of the product as specified on this certificate were tested  
according to the current UL requirements.



Bruce Mahrenholz, Director North American Certification Program  
UL LLC

Any information and documentation involving UL Mark services are provided on behalf of UL LLC (UL) or any authorized licensee of UL. For questions, please  
contact a local UL Customer Service Representative at <http://ul.com/aboutul/locations/>

