

PRODUCT INFORMATION PACKET



Model No: 182TTFW7634

Catalog No: C1223

General Purpose Motor, 3 & 2 HP, 3 Ph, 60 & 50 Hz, 208-230/460 & 190/380 V, 1800 & 1500 RPM,
182TC Frame, TEFC

Regal and Marathon are trademarks of Regal Rexnord Corporation or one of its affiliated companies.

©2023 Regal Rexnord Corporation, All Rights Reserved. MC017097E

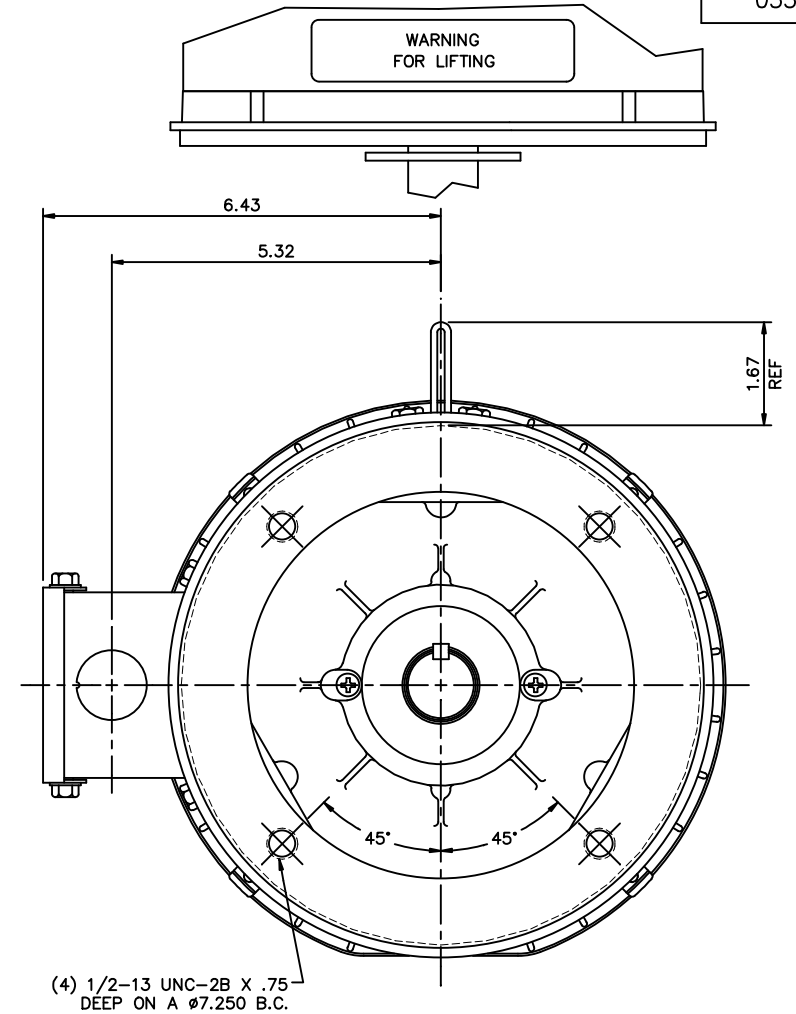
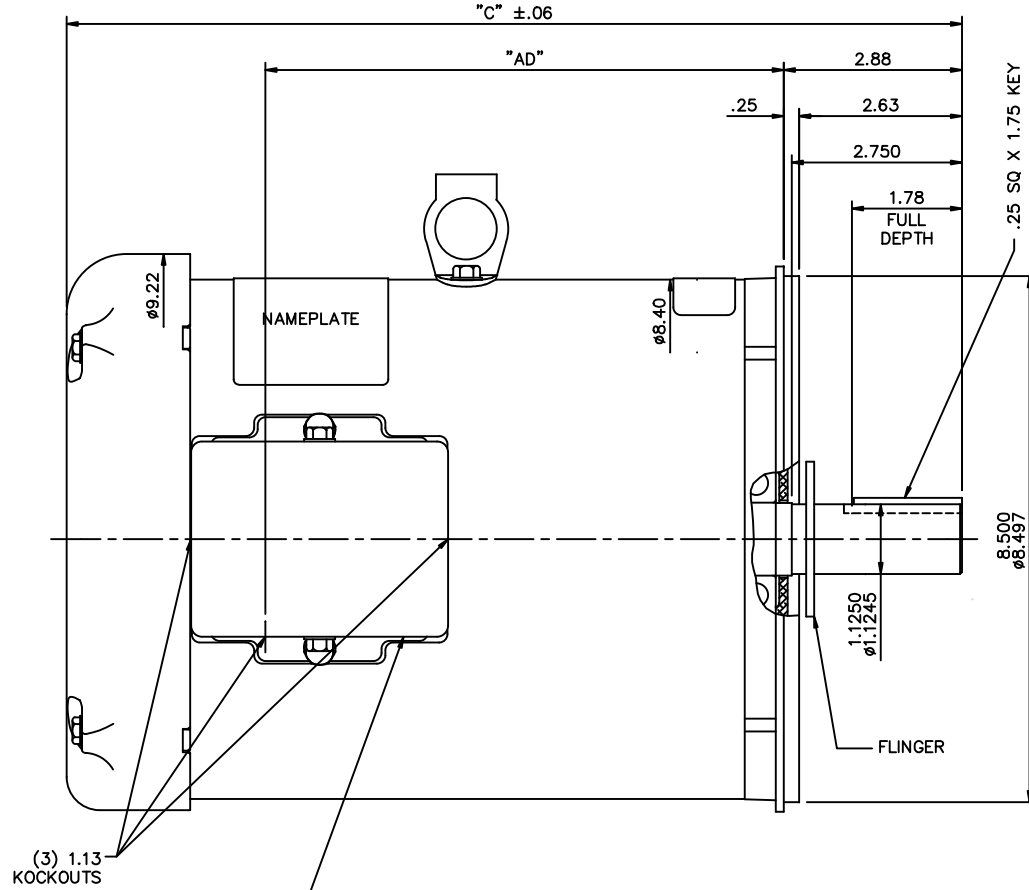


Nameplate Specifications

| | | | |
|------------------------|-------------------|----------------------------|-----------------------------|
| Phase | 3 | Output HP | 3 & 2 Hp |
| Output KW | 2.2 & 1.5 kW | Voltage | 208-230/460 & 190/380 V |
| Speed | 1740 & 1445 rpm | Service Factor | 1.15 & 1.0 |
| Frame | 182TC | Enclosure | Totally Enclosed Fan Cooled |
| Thermal Protection | No Protection | Efficiency | 82.5 & 80 % |
| Ambient Temperature | 40 °C | Frequency | 60 & 50 Hz |
| Current | 9.2-9/4.5 & 8/4 A | Power Factor | 75.5 |
| Duty | Continuous | Insulation Class | F |
| Design Code | B | KVA Code | K |
| Drive End Bearing Size | 6206 | Opp Drive End Bearing Size | 6205 |
| UL | Recognized | CSA | Y |
| CE | Y | IP Code | 43 |
| Number of Speeds | 1 | | |

Technical Specifications

| | | | |
|-----------------------|-----------------------------|-----------------------|-----------------|
| Electrical Type | Squirrel Cage Induction Run | Starting Method | Across The Line |
| Poles | 4 | Rotation | Reversible |
| Resistance Main | 4.76 Ohms | Mounting | Round |
| Motor Orientation | Horizontal | Drive End Bearing | Ball |
| Opp Drive End Bearing | Ball | Frame Material | Rolled Steel |
| Shaft Type | T | Overall Length | 12.97 in |
| Frame Length | 7.50 in | Shaft Diameter | 1.125 in |
| Shaft Extension | 2.75 in | Assembly/Box Mounting | F1 ONLY |
| Outline Drawing | 035541-750 | Connection Drawing | 005010.01ME |



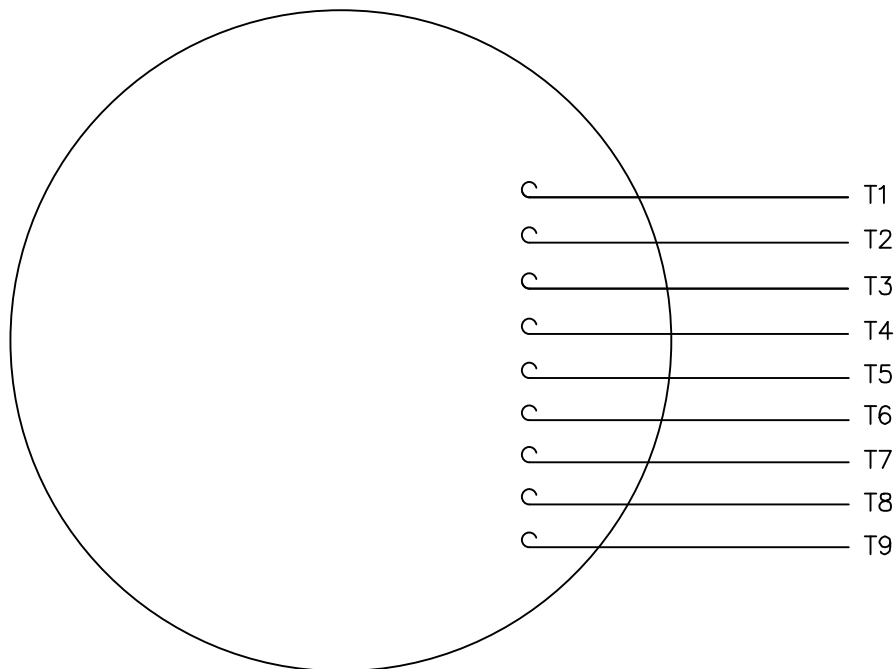
GASKETS THROUGHOUT

MAXIMUM FACE RUNOUT TO BE .004 T.I.R.
MAXIMUM PILOT ECCENTRICITY TO BE .004 T.I.R.
PERMISSIBLE SHAFT RUNOUT TO BE .002 T.I.R.

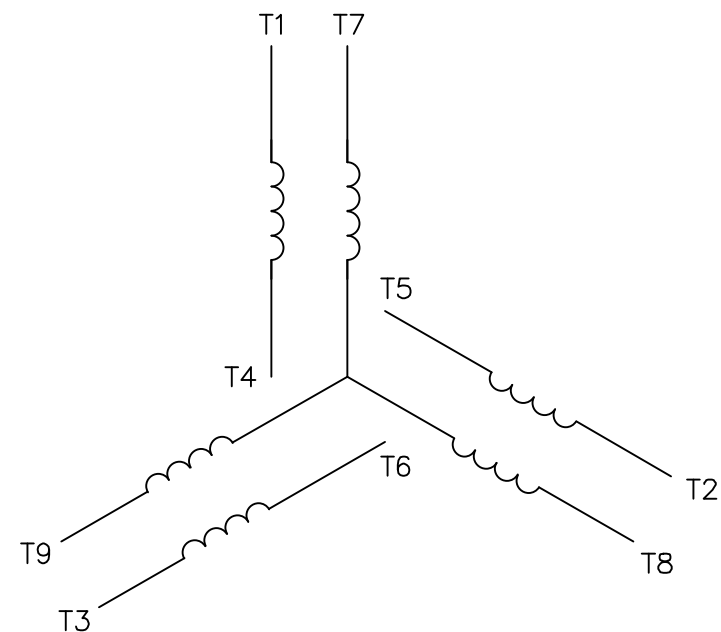
| DASH NO. | "C" | "AD" |
|----------|-------|-------|
| 750 | 12.97 | 6.88 |
| 800 | 13.47 | 7.38 |
| 850 | 13.97 | 7.88 |
| 900 | 14.47 | 8.38 |
| 950 | 14.97 | 8.88 |
| 1000 | 15.47 | 9.38 |
| 1050 | 15.97 | 9.88 |
| 1100 | 16.47 | 10.38 |
| 1150 | 16.97 | 10.88 |

| | | | | TOLERANCES UNLESS SPECIFIED | | MARATHON ELECTRIC | DRAWN VV 08/08/07 | |
|--|----------------------------------|--------------|-----|--------------------------------|--------|--|-------------------|-------------|
| | | | | DEC. | INCHES | | CHK | |
| | | | | .X | ±.1 | | APPD | |
| | | | | .XX | ±.03 | TITLE | SCALE | 1=2 |
| 02 | REMOVED CE & INVERTER DUTY DECAL | PN 12/8/2010 | ST | .XXX | ±.005 | OUTLINE - 180TC FRAME TEFC - "C" FACE | REF | 035537 |
| 01 | REMOVED DECAL 004153.01 | GWS 3/13/08 | | .XXX | ±.0005 | MAT'L | GENERAL PURPOSE | FMF |
| NO. | REVISION | BY & DATE | CHK | ANG | ±1/2" | FINISH | PREV | |
| THIS DRAWING IN DESIGN AND DETAIL IS OUR PROPERTY AND MUST NOT BE USED EXCEPT IN CONNECTION WITH OUR WORK ALL RIGHTS OF DESIGN AND INVENTION ARE RESERVED THIS IS AN ELECTRONICALLY GENERATED DOCUMENT - DO NOT SCALE THIS PRINT | | | | | | RFP | CAD FILE | 035541 |
| | | | | | | DIST | NLV | |
| | | | | | | | SIZE | DRAWING NO. |
| | | | | | | | B | 035541 |
| | | | | | | | | REV. |
| | | | | | | | | 02 |


VIEW FROM OUTSIDE OF MOTOR AT SWITCH END.



LINE LEADS



| VOLTAGE | L1 | L2 | L3 | JOIN & INSULATE |
|---------|-------|-------|-------|-------------------------------|
| HIGH | T1 | T2 | T3 | (T4,T7) (T5,T8) (T6,T9) |
| LOW | T1,T7 | T2,T8 | T3,T9 | T4,T5,T6 |

| | | | | | | | | | |
|--|----------|-----------|--------------|--------------------------------|---------------------|---|--------------------|-------------|------|
| | | | | TOLERANCES UNLESS SPECIFIED | |  | DRAWN RDW 04/12/02 | | |
| | | | | DEC. | INCHES | | CHK | | |
| | | | | .X | ±.1 | | APPD | | |
| | | | | .XX | ±.01 | | SCALE 1=1 | | |
| | | | | .XXX | ±.005 | | REF FIG.2-51 | | |
| | | | | .XXXX | ±.0005 | MAT'L. DECAL - 004014 | | FMF | |
| NO. | REVISION | BY & DATE | CHK | ANG | ±1/2" | FINISH | | PREV | |
| THIS DRAWING IN DESIGN AND DETAIL IS OUR PROPERTY AND MUST NOT BE USED EXCEPT IN CONNECTION WITH OUR WORK ALL RIGHTS OF DESIGN AND INVENTION ARE RESERVED THIS IS AN ELECTRONICALLY GENERATED DOCUMENT - DO NOT SCALE THIS PRINT | | | RFP 04/12/02 | | CAD FILE 00501001ME | | SIZE | DRAWING NO. | REV. |
| | | | DIST | | | | A | 005010-01ME | |