

PRODUCT INFORMATION PACKET



Model No: 182TTFW7325

Catalog No: C1203

Other Purpose Motor, 3 & 2 HP, 3 Ph, 60 & 50 Hz, 208-230/460 & 190/380 V, 3600 & 3000 RPM,
182TC Frame, TEFC

Regal and Marathon are trademarks of Regal Rexnord Corporation or one of its affiliated companies.

©2023 Regal Rexnord Corporation, All Rights Reserved. MC017097E

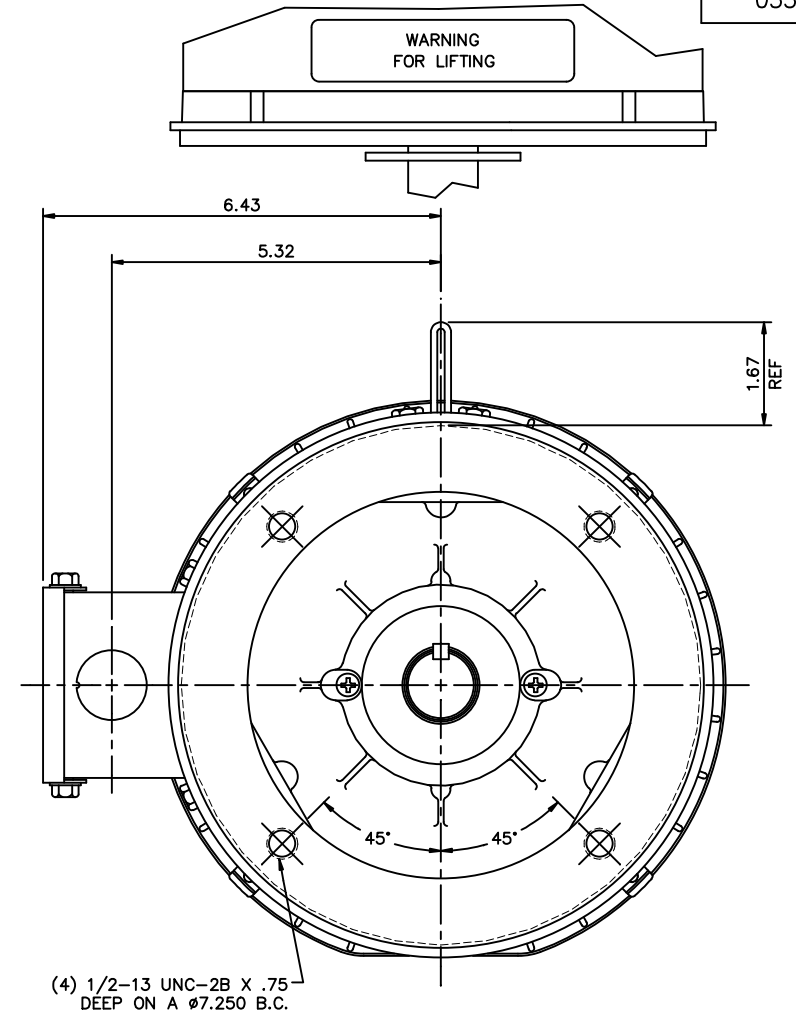
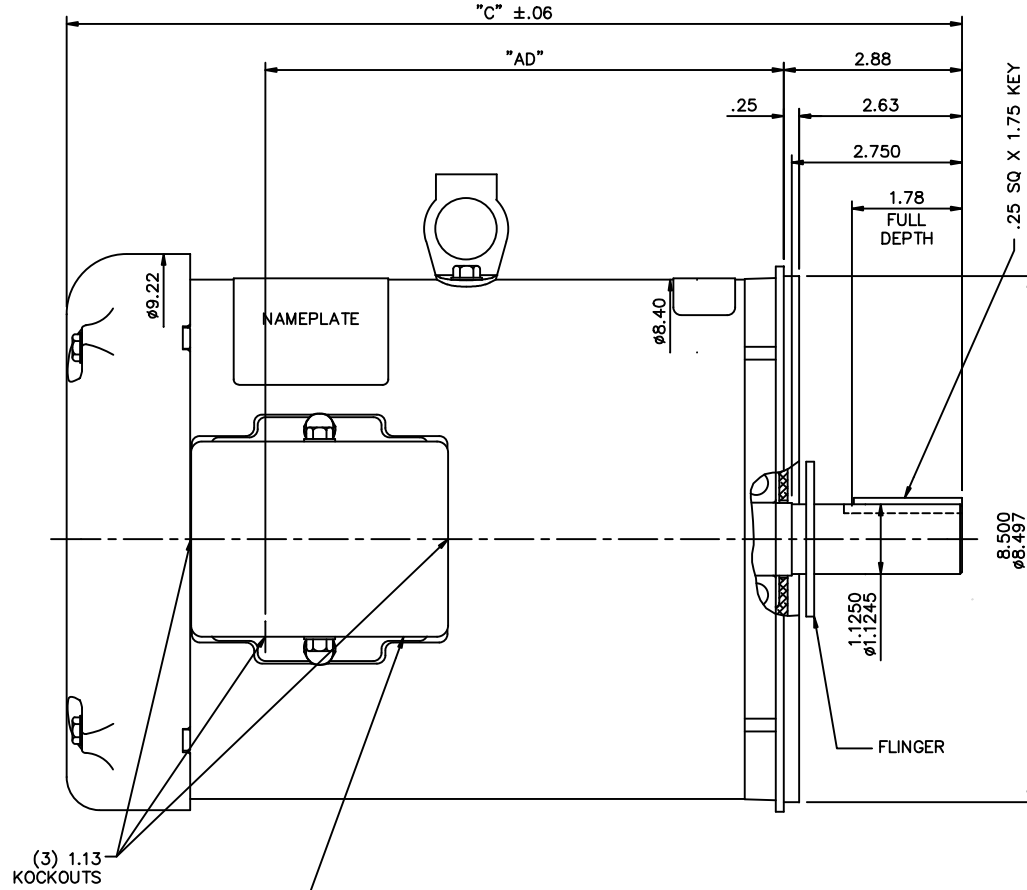


Nameplate Specifications

Phase	3	Output HP	3 & 2 Hp
Output KW	2.2 & 1.5 kW	Voltage	208-230/460 & 190/380 V
Speed	3475 & 2890 rpm	Service Factor	1.15 & 1.0
Frame	182TC	Enclosure	Totally Enclosed Fan Cooled
Thermal Protection	No Protection	Efficiency	82.5 & 80 %
Ambient Temperature	40 °C	Frequency	60 & 50 Hz
Current	8.6-7.8/3.9 & 6.8/3.4 A	Power Factor	87
Duty	Continuous	Insulation Class	F
Design Code	B	KVA Code	H
Drive End Bearing Size	6206	Opp Drive End Bearing Size	6205
UL	Recognized	CSA	Y
CE	Y	IP Code	43
Number of Speeds	1		

Technical Specifications

Electrical Type	Squirrel Cage Induction Run	Starting Method	Across The Line
Poles	2	Rotation	Reversible
Resistance Main	5.16 Ohms	Mounting	Round
Motor Orientation	Horizontal	Drive End Bearing	Ball
Opp Drive End Bearing	Ball	Frame Material	Rolled Steel
Shaft Type	T	Overall Length	12.97 in
Frame Length	7.50 in	Shaft Diameter	1.125 in
Shaft Extension	2.75 in	Assembly/Box Mounting	F1 Only
Connection Drawing	005010.01ME	Outline Drawing	035541-750



GASKETS THROUGHOUT

MAXIMUM FACE RUNOUT TO BE .004 T.I.R.

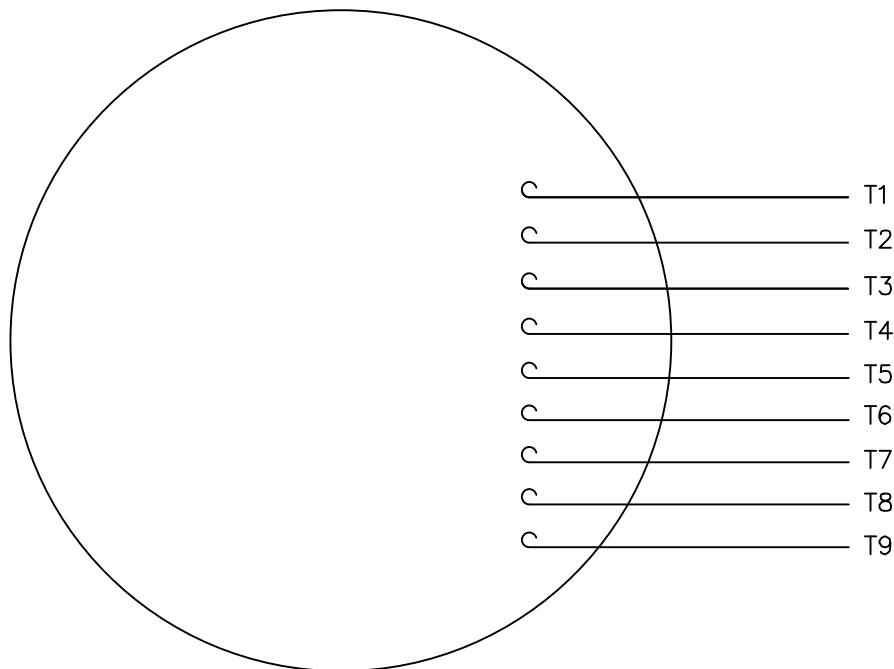
MAXIMUM PILOT ECCENTRICITY TO BE .004 T.I.R.

PERMISSIBLE SHAFT RUNOUT TO BE .002 T.I.R.

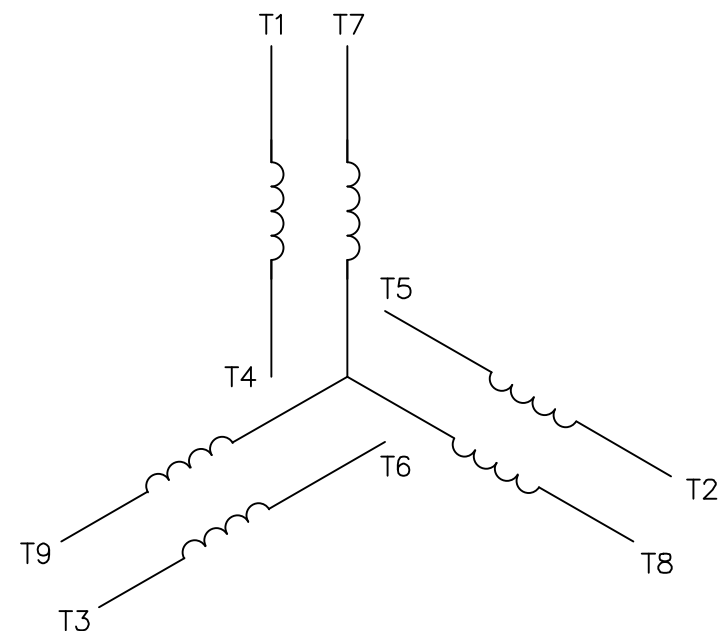
DASH NO.	"C"	"AD"
750	12.97	6.88
800	13.47	7.38
850	13.97	7.88
900	14.47	8.38
950	14.97	8.88
1000	15.47	9.38
1050	15.97	9.88
1100	16.47	10.38
1150	16.97	10.88

				TOLERANCES UNLESS SPECIFIED		MARATHON ELECTRIC	DRAWN VV 08/08/07	
				DEC.	INCHES		CHK	
				.X	±.1		APPD	
				.XX	±.03		SCALE	1=2
02	REMOVED CE & INVERTER DUTY DECAL	PN 12/8/2010	ST	.XXX	±.005	TITLE	OUTLINE - 180TC FRAME	REF 035537
01	REMOVED DECAL 004153.01	GWS 3/13/08		.XXX	±.0005	MAT'L	GENERAL PURPOSE	FMF
NO.	REVISION	BY & DATE	CHK	ANG	±1/2"	FINISH	PREV	
THIS DRAWING IN DESIGN AND DETAIL IS OUR PROPERTY AND MUST NOT BE USED EXCEPT IN CONNECTION WITH OUR WORK ALL RIGHTS OF DESIGN AND INVENTION ARE RESERVED THIS IS AN ELECTRONICALLY GENERATED DOCUMENT - DO NOT SCALE THIS PRINT						RFP	CAD FILE	035541
						DIST NLV	SIZE B	DRAWING NO. 035541
								REV. 02


VIEW FROM OUTSIDE OF MOTOR AT SWITCH END.



LINE LEADS



VOLTAGE	L1	L2	L3	JOIN & INSULATE
HIGH	T1	T2	T3	(T4,T7) (T5,T8) (T6,T9)
LOW	T1,T7	T2,T8	T3,T9	T4,T5,T6

				TOLERANCES UNLESS SPECIFIED		 MARATHON ELECTRIC	DRAWN RDW 04/12/02			
				DEC.	INCHES		CHK			
				.X	±.1		APPD			
				.XX	±.01		SCALE 1=1			
				.XXX	±.005		REF FIG.2-51			
				.XXXX	±.0005		FMF			
NO.	REVISION	BY & DATE	CHK	ANG	±1/2"	FINISH		PREV		
THIS DRAWING IN DESIGN AND DETAIL IS OUR PROPERTY AND MUST NOT BE USED EXCEPT IN CONNECTION WITH OUR WORK ALL RIGHTS OF DESIGN AND INVENTION ARE RESERVED THIS IS AN ELECTRONICALLY GENERATED DOCUMENT – DO NOT SCALE THIS PRINT			RFP	04/12/02		CAD FILE 00501001ME		SIZE A	DRAWING NO. 005010-01ME	REV.
			DIST							