

# PRODUCT INFORMATION PACKET



Model No: 182TTFW16034  
Catalog No: 182TTFW16034  
3,1800,TEFC,182T,3/60/200

Regal and Marathon are trademarks of Regal Rexnord Corporation or one of its affiliated companies.  
©2023 Regal Rexnord Corporation, All Rights Reserved. MC017097E



**Nameplate Specifications**

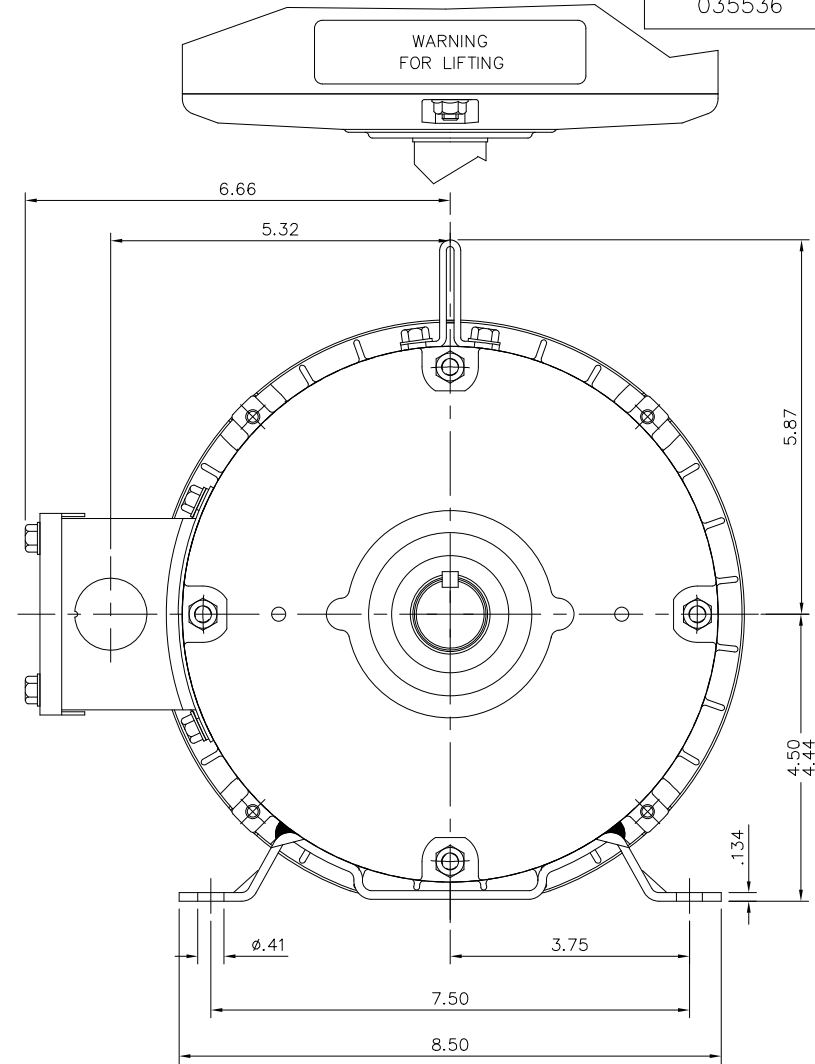
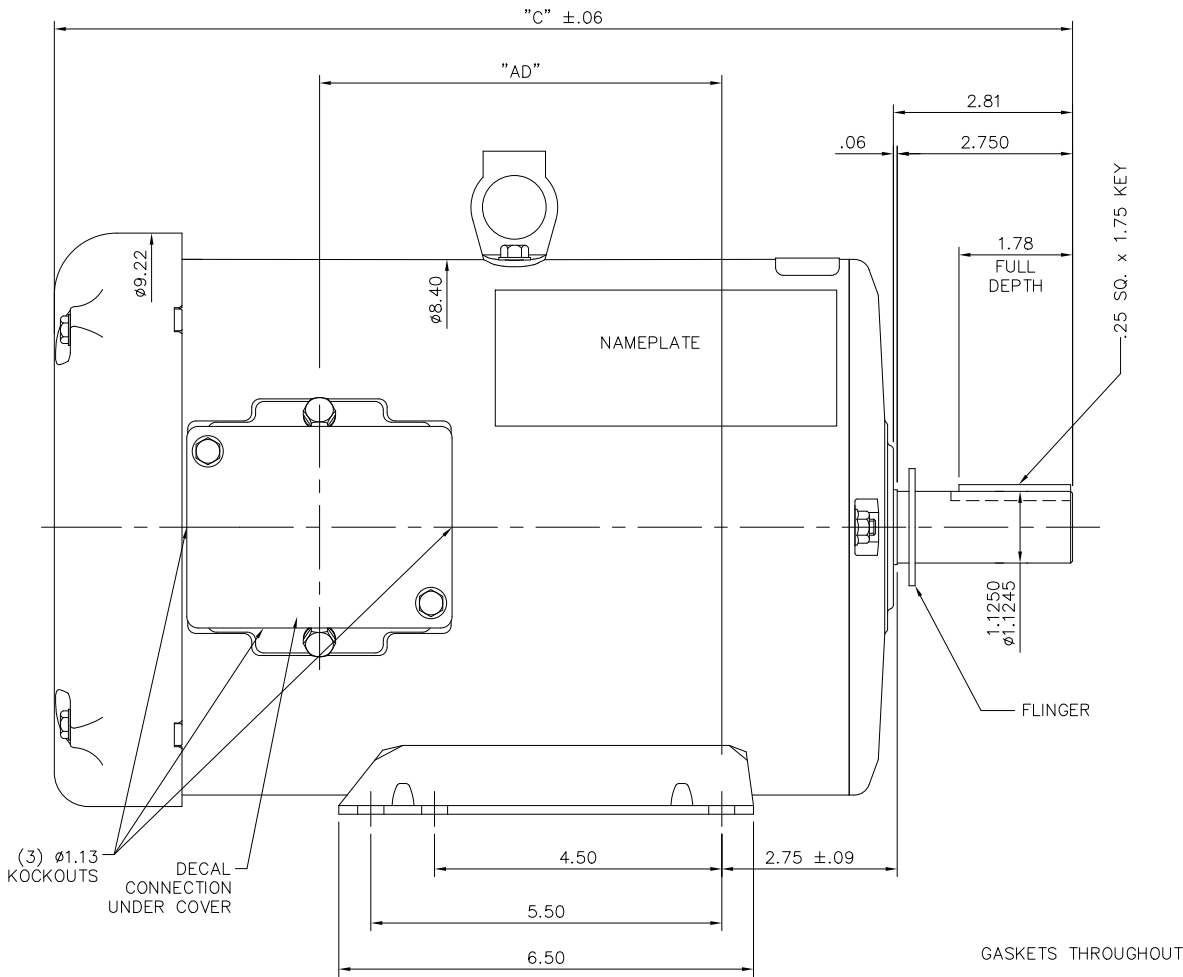
Phase	<b>3</b>	Output HP	<b>3 Hp</b>
Output KW	<b>2.2 kW</b>	Voltage	<b>200 V</b>
Speed	<b>1770 rpm</b>	Service Factor	<b>1.15</b>
Frame	<b>182T</b>	Enclosure	<b>Totally Enclosed Fan Cooled</b>
Thermal Protection	<b>No Protection</b>	Efficiency	<b>89.5 %</b>
Ambient Temperature	<b>40 °C</b>	Frequency	<b>60 Hz</b>
Current	<b>9.0 A</b>	Power Factor	<b>80.5</b>
Duty	<b>Continuous</b>	Insulation Class	<b>F</b>
Design Code	<b>B</b>	KVA Code	<b>K</b>
Drive End Bearing Size	<b>6206</b>	Opp Drive End Bearing Size	<b>6205</b>
UL	<b>Recognized</b>	CSA	<b>Y</b>
CE	<b>Y</b>	IP Code	<b>43</b>
Number of Speeds	<b>1</b>		

**Technical Specifications**

Electrical Type	<b>Squirrel Cage Induction Run</b>	Starting Method	<b>Across The Line</b>
Poles	<b>4</b>	Rotation	<b>Reversible</b>
Resistance Main	<b>6.08 Ohms</b>	Mounting	<b>Rigid Base</b>
Motor Orientation	<b>Horizontal</b>	Drive End Bearing	<b>Ball</b>
Opp Drive End Bearing	<b>Ball</b>	Frame Material	<b>Rolled Steel</b>
Shaft Type	<b>T</b>	Assembly/Box Mounting	<b>F1 ONLY</b>
Outline Drawing	<b>035536-850</b>	Connection Drawing	<b>005102.01ME</b>


This is an uncontrolled document once printed or downloaded and is subject to change without notice. Date Created:11/20/2023

035536

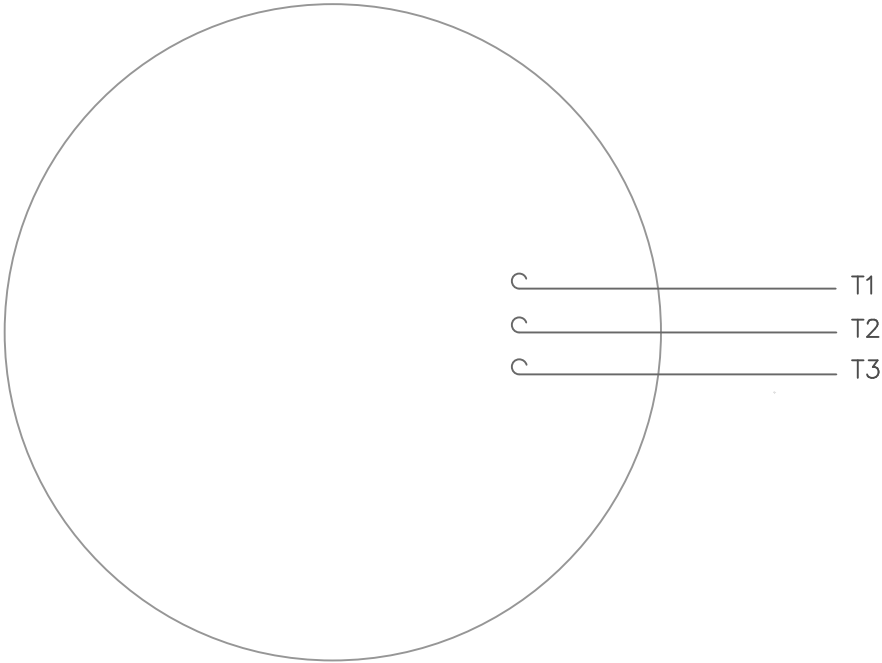


DASH NO.	"C"	"AD"
750	12.97	3.37
800	13.47	3.87
850	13.97	4.37
900	14.47	4.87
950	14.97	5.37
1000	15.47	5.87
1050	15.97	6.37
1100	16.47	6.87
1150	16.97	7.37

ORACLE REV  
003


				TOLERANCES UNLESS SPECIFIED			DRAWN VV 07/02/07	
				DEC.	INCHES		CHK SV 07/02/07	
04	Updated Nameplate location	JG	09/06/23	TS	.X	±.1	TITLE OUTLINE- 180T FRAME TEFC- RIGID	APPD VS 07/02/07
03	ADDED FLINGER	PVR	02/10/15	ST	.XX	±.03		SCALE 1=2
02	WHEN REQD NOTE ADDED FOR 'XRI' DECAL	GR	02/07/13	AK	.XXX	±.005		REF
01	UPDATED FRAME LENGTH TABLE	PVR	08/31/12	JD	.XXXX	±.0005		FMF
NO.	REVISION	BY & DATE	CHK	ANG	FINISH			PREV
			RFP		CAD FILE	035536	SIZE B	DRAWING NO. 035536
			DIST					REV. 04

VIEW FROM OUTSIDE OF MOTOR AT SWITCH END.



CONNECT LEADS AS FOLLOWS  
FOR FOUR CONDUCTOR CORD ( )

CORD	L1 (RED)	L2 (WHITE)	L3 (BLACK)	(GREEN)
MOTOR	T1	T2	T3	GROUND

				TOLERANCES UNLESS SPECIFIED			DRAWN RDW 5/1/02					
				DEC.	INCHES		CHK					
				.X	±.1		APPD					
				.XX	±.01		SCALE 1=1					
				.XXX	±.005		REF					
				.XXXX	±.0005	MAT'L. DECAL - 004169			FMF			
NO.	REVISION		BY & DATE		CHK	ANG	±1/2°	FINISH			PREV	
THIS DRAWING IN DESIGN AND DETAIL IS OUR PROPERTY AND MUST NOT BE USED EXCEPT IN CONNECTION WITH OUR WORK ALL RIGHTS OF DESIGN AND INVENTION ARE RESERVED THIS IS AN ELECTRONICALLY GENERATED DOCUMENT – DO NOT SCALE THIS PRINT					RFP 5/1/02		CAD FILE 00510201ME		SIZE	DRAWING NO.		REV.
					DIST				A	005102-01ME		

THIS DRAWING IN DESIGN AND DETAIL IS OUR PROPERTY AND MUST NOT BE USED EXCEPT  
IN CONNECTION WITH OUR WORK ALL RIGHTS OF DESIGN AND INVENTION ARE RESERVED  
THIS IS AN ELECTRONICALLY GENERATED DOCUMENT - DO NOT SCALE THIS PRINT