

# PRODUCT INFORMATION PACKET

Model No: 182TTFS6501

Catalog No: E390

XRI®-SD Severe Duty Motor, 3 HP, 3 Ph, 60 Hz, 230/460 V, 3600 RPM, 182T Frame, TEFC



Regal and Marathon are trademarks of Regal Rexnord Corporation or one of its affiliated companies.

©2022 Regal Rexnord Corporation, All Rights Reserved. MC017097E

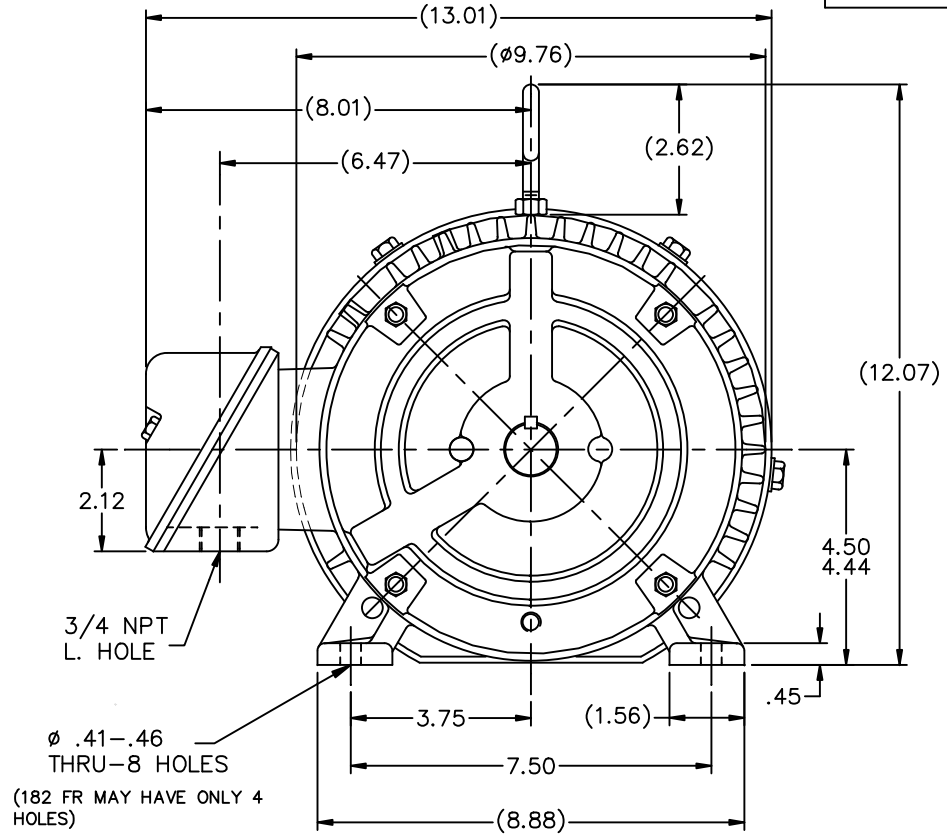
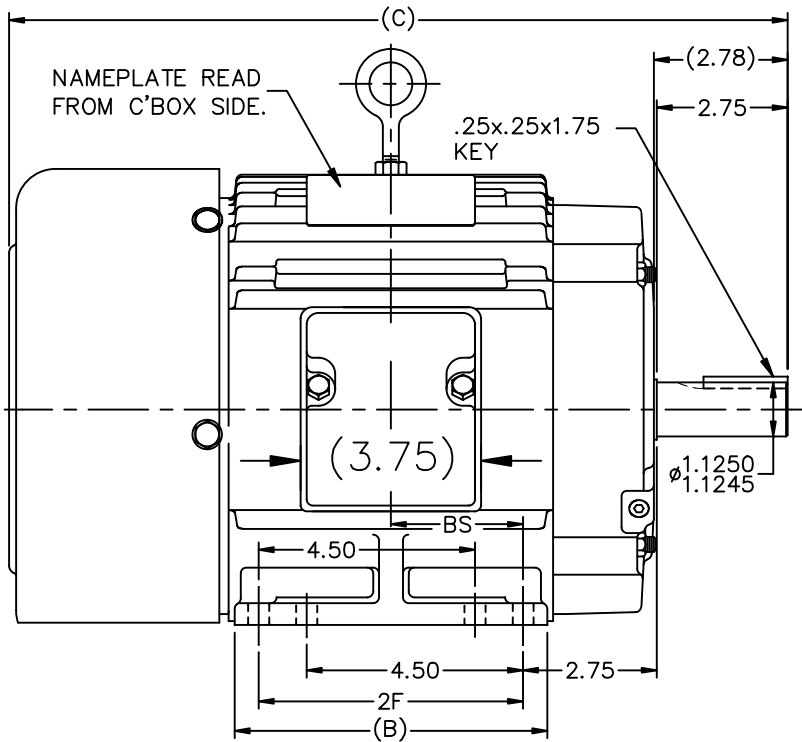
### Nameplate Specifications

|                        |                       |                            |                                    |
|------------------------|-----------------------|----------------------------|------------------------------------|
| Output HP              | <b>3 Hp</b>           | Output KW                  | <b>2.2 kW</b>                      |
| Frequency              | <b>60 Hz</b>          | Voltage                    | <b>230/460 V</b>                   |
| Current                | <b>7.6/3.8 A</b>      | Speed                      | <b>3525 rpm</b>                    |
| Service Factor         | <b>1.15</b>           | Phase                      | <b>3</b>                           |
| Efficiency             | <b>87.5 %</b>         | Power Factor               | <b>85</b>                          |
| Duty                   | <b>Continuous</b>     | Insulation Class           | <b>F</b>                           |
| Design Code            | <b>B</b>              | KVA Code                   | <b>K</b>                           |
| Frame                  | <b>182T</b>           | Enclosure                  | <b>Totally Enclosed Fan Cooled</b> |
| Thermal Protection     | <b>No Protection</b>  | Ambient Temperature        | <b>40 °C</b>                       |
| Drive End Bearing Size | <b>6206</b>           | Opp Drive End Bearing Size | <b>6205</b>                        |
| UL                     | <b>Recognized</b>     | CSA                        | <b>Y</b>                           |
| CE                     | <b>Y</b>              | IP Code                    | <b>54</b>                          |
| Hazardous Location     | <b>DIVISION 2 T2B</b> | Number of Speeds           | <b>1</b>                           |

### Technical Specifications

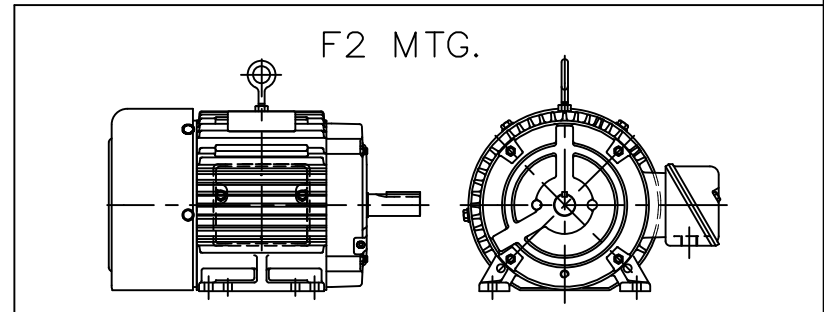
|                       |                                     |                       |                         |
|-----------------------|-------------------------------------|-----------------------|-------------------------|
| Electrical Type       | <b>Squirrel Cage Inverter Rated</b> | Starting Method       | <b>Line Or Inverter</b> |
| Poles                 | <b>2</b>                            | Rotation              | <b>Reversible</b>       |
| Resistance Main       | <b>3.56 Ohms</b>                    | Mounting              | <b>Rigid Base</b>       |
| Motor Orientation     | <b>Horizontal</b>                   | Drive End Bearing     | <b>Ball</b>             |
| Opp Drive End Bearing | <b>Ball</b>                         | Frame Material        | <b>Cast Iron</b>        |
| Shaft Type            | <b>T</b>                            | Overall Length        | <b>15.19 in</b>         |
| Frame Length          | <b>5.75 in</b>                      | Shaft Diameter        | <b>1.125 in</b>         |
| Shaft Extension       | <b>2.78 in</b>                      | Assembly/Box Mounting | <b>F1/F2 CAPABLE</b>    |
| Inverter Load         | <b>CONSTANT 20:1</b>                |                       |                         |
| Connection Drawing    | <b>A-EE7308</b>                     | Outline Drawing       | <b>A-SS63661-575</b>    |

This is an uncontrolled document once printed or downloaded and is subject to change without notice. Date Created:11/28/2022



BOX CAN BE MOUNTED ON OPPOSITE SIDE BY REMOVING BRACKETS & TURNING FRAME 180°.

BOX CAN BE ROTATED IN 90° STEPS.



| DASH | FR.  | C     | B    | 2F   | BS   |
|------|------|-------|------|------|------|
| 575  | 182T | 15.19 | 5.50 | 4.50 | 2.25 |
| 675  | 184T | 16.19 | 6.50 | 5.50 | 2.75 |
| 800  | 184T | 17.44 | 7.75 | 5.50 | 3.38 |

| NO. | REVISION                                       | BY & DATE      | CHK  | ANG   | ±      | FINISH |
|-----|--|----------------|------|-------|--------|--------|
| 13  | CHG COND. BOX DIM, WAS 5.00 NOW 3.75 ECN 18821 | TF 01/31/2011  | EMH  |       |        |        |
| 12  | REDRAWN IN AUTOCAD                             | TAT 06-29-2004 | ML   | DEC.  | INCHES |        |
| 11  | UPDATED MOUNTING HOLE NOTE CN 26000-581        | DRS 01-02-2002 | ML   | .X    | ±.1    |        |
| 10  | ADDED 182 FR. MAY HAV... NOTE CN 26000-581     | MRB 07-02-1998 |      | .XX   | ±.03   |        |
| 9   | ADDED 4 MOUNTING HOLES                         | MJD 06-09-1998 |      | .XXX  | ±.005  |        |
| 8   | ADDED NEMA "O" DIMENSION                       | MRB 09-12-1996 |      | .XXXX | ±.0005 |        |
|     |  |                | RFP  |       |        |        |
|     |  |                | DIST | LB    |        |        |

| TOLERANCES UNLESS SPECIFIED |              |
|-----------------------------|--------------|
| EMH                         | DEC. INCHES  |
| ML                          | .X ±.1       |
|                             | .XX ±.03     |
|                             | .XXX ±.005   |
|                             | .XXXX ±.0005 |
| CHK                         | ANG ±7'30"   |

| MARATHON ELECTRIC        |         |
|--------------------------|---------|
| TITLE OUTLINE            |         |
| 180 FR. - BB - TS - TEFC |         |
| MAT'L.                   |         |
| FINISH                   |         |
| CAD FILE                 | ss63661 |

|       |                          |
|-------|--------------------------|
| DRAWN | RM 01-08-1993            |
| CHK   | ML 01-13-1993            |
| APPD  | GK 01-13-1993            |
| SCALE | 1=4                      |
| REF   |                          |
| FMF   |                          |
| PREV  |                          |
| SIZE  | DRAWING NO. PAGE OF REV. |
| A     | SS63661 13               |

THIS DRAWING IN DESIGN AND DETAIL IS OUR PROPERTY AND MUST NOT BE USED EXCEPT IN CONNECTION WITH OUR WORK ALL RIGHTS OF DESIGN AND INVENTION ARE RESERVED THIS IS AN ELECTRONICALLY GENERATED DOCUMENT - DO NOT SCALE THIS PRINT



| NO.  | REVISION                                       | BY & DATE      | CHK | ANG   | TOLERANCES<br>UNLESS SPECIFIED |        | FINISH  | DRAWN RM 11/20/1990 |        |                    |           |        |
|--|--|----------------|-----|-------|--------------------------------|--------|---|---------------------|--------|--------------------|-----------|--------|
|  |  |                |     |       | DEC.                           | INCHES |   |                     |        |                    |           |        |
| 5  | CHG TO REGAL LOGO                              | SL 09/10/2015  | AB  |       |                                |        |   | CHK ML 11/21/1990   |        |                    |           |        |
| 4  | REVISED IEC NOTATIONS                          | MSG 11/15/2011 | CMN | .X    | ±.1                            |        |   | APPD SAS 04/24/2003 |        |                    |           |        |
| 3  | ADDED IEC NOTATIONS... (U1), (V1) ETC. MU95194 | MSG 5/10/2010  | MJS | .XX   | ±.02                           |        |   | SCALE 1=1           |        |                    |           |        |
| 2  | ADDED THE OPTIONAL CORD CONNECTION MU46318     | RDH 04/24/2003 | DRS | .XXX  | ±.005                          |        | TITLE CONNECTION DIAGRAM<br>3Ø - DUAL VOLTAGE MOTOR | REF                 |        |                    |           |        |
| 1  | REDRAWN  | RM 11/20/1990  |     | .XXXX | ±.0005                         |        | MAT'L.  | FMF                 |        |                    |           |        |
|  |  |                |     |       | ±7'30"                         |        |   | PREV                |        |                    |           |        |
| THIS DRAWING IN DESIGN AND DETAIL IS OUR PROPERTY AND MUST NOT BE USED EXCEPT IN CONNECTION WITH OUR WORK ALL RIGHTS OF DESIGN AND INVENTION ARE RESERVED THIS IS AN ELECTRONICALLY GENERATED DOCUMENT - DO NOT SCALE THIS PRINT |  |                |     |       |                                |        | RFP   | CAD FILE ee7308     | SIZE A | DRAWING NO. EE7308 | PAGE OF 5 | REV. 5 |
|  |  |                |     |       |                                |        | DIST WP   |                     |        |                    |           |        |



Data Sheet

Date: 29-06-2017  
 Customer: \_\_\_\_\_  
 Attention: \_\_\_\_\_  
 Submitted by: FAREEDA DUDEKULA



182TTF56501

**Submittal**

Data @ 460 V

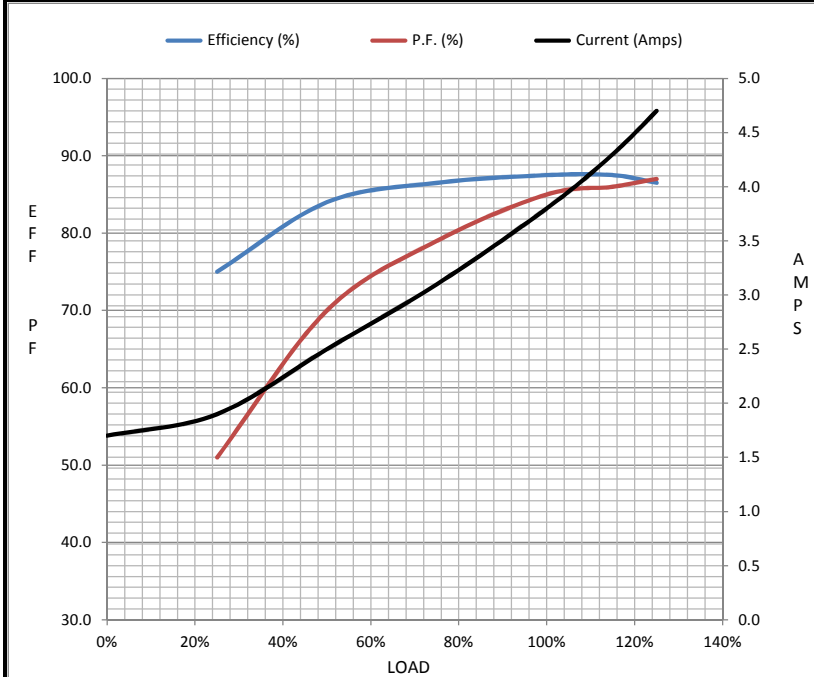
Motor Load Data

| Load           | 0%   | 25%  | 50%  | 75%  | 100% | 115%  | 125% | LR   |
|----------------|------|------|------|------|------|-------|------|------|
| Current (Amps) | 1.70 | 1.90 | 2.50 | 3.1  | 3.8  | 4.3   | 4.7  | 29.0 |
| Torque (ft-lb) | 0.00 | 1.10 | 2.20 | 3.3  | 4.5  | 5.2   | 5.6  | 9.0  |
| RPM            | 3600 | 3582 | 3565 | 3545 | 3525 | 3,515 | 3505 | 0    |
| Efficiency (%) |      | 75.0 | 84.0 | 86.5 | 87.5 | 87.5  | 86.5 |      |
| P.F. (%)       | 11.0 | 51.0 | 70.0 | 79.0 | 85.0 | 86.0  | 87.0 | 42.0 |

Motor Speed Data

|                | LR   | Pull-Up | BD   | Rated | Idle |
|----------------|------|---------|------|-------|------|
| Speed (RPM)    | 0    | 1100    | 2985 | 3525  | 3600 |
| Current (Amps) | 29.0 | 29.5    | 18.0 | 3.8   | 1.70 |
| Torque (ft-lb) | 9.0  | 10.5    | 16.0 | 4.5   | 0.00 |

| Information Block           |                         |        |        |          |
|-----------------------------|-------------------------|--------|--------|----------|
| HP                          | 3.0                     |        |        |          |
| Sync. RPM                   | 3600                    |        |        |          |
| Frame                       | 182                     |        |        |          |
| Enclosure                   | TEFC                    |        |        |          |
| Construction                | TFS                     |        |        |          |
| Voltage                     | 230/460 V               |        |        |          |
| Frequency                   | 60 Hz                   |        |        |          |
| Design                      | B                       |        |        |          |
| LR Code letter              | K                       |        |        |          |
| Service Factor              | 1.15                    |        |        |          |
| Temp Rise @ FL              | 32 ° C                  |        |        |          |
| Duty                        | CONT                    |        |        |          |
| Ambient                     | 40 ° C                  |        |        |          |
| Elevation                   | 1,000 feet              |        |        |          |
| Rotor/Shaft wk <sup>2</sup> | 0.23 Lb-Ft <sup>2</sup> |        |        |          |
| Ref Wdg                     | 182258 NONE             |        |        |          |
| Sound Pressure @ 1M         | 72 dBA                  |        |        |          |
| VFD Rating                  | CONSTANT 20:1           |        |        |          |
| Outline Dwg                 | A-SS63661-575           |        |        |          |
| Conn. Diag                  | A-EE7308                |        |        |          |
| Additional Specifications:  |                         |        |        |          |
| 0                           |                         |        |        |          |
| 365THFS8036                 |                         |        |        |          |
| EQUIV CKT (OHMS / PHASE)    |                         |        |        |          |
| R1                          | R2                      | X1     | X2     | Xm       |
| 1.7780                      | 2.0150                  | 7.3220 | 2.4500 | 167.4420 |



Speed - Torque Curve

