

# PRODUCT INFORMATION PACKET

**marathon**<sup>®</sup>  
Motors

Model No: 182TTFS16553  
Catalog No: 182TTFS16553  
3,1800,TEFC,182TC,3/60/230/460

Regal and Marathon are trademarks of Regal Rexnord Corporation or one of its affiliated companies.  
©2023 Regal Rexnord Corporation, All Rights Reserved. MC017097E

**RegalRexnord**

### Nameplate Specifications

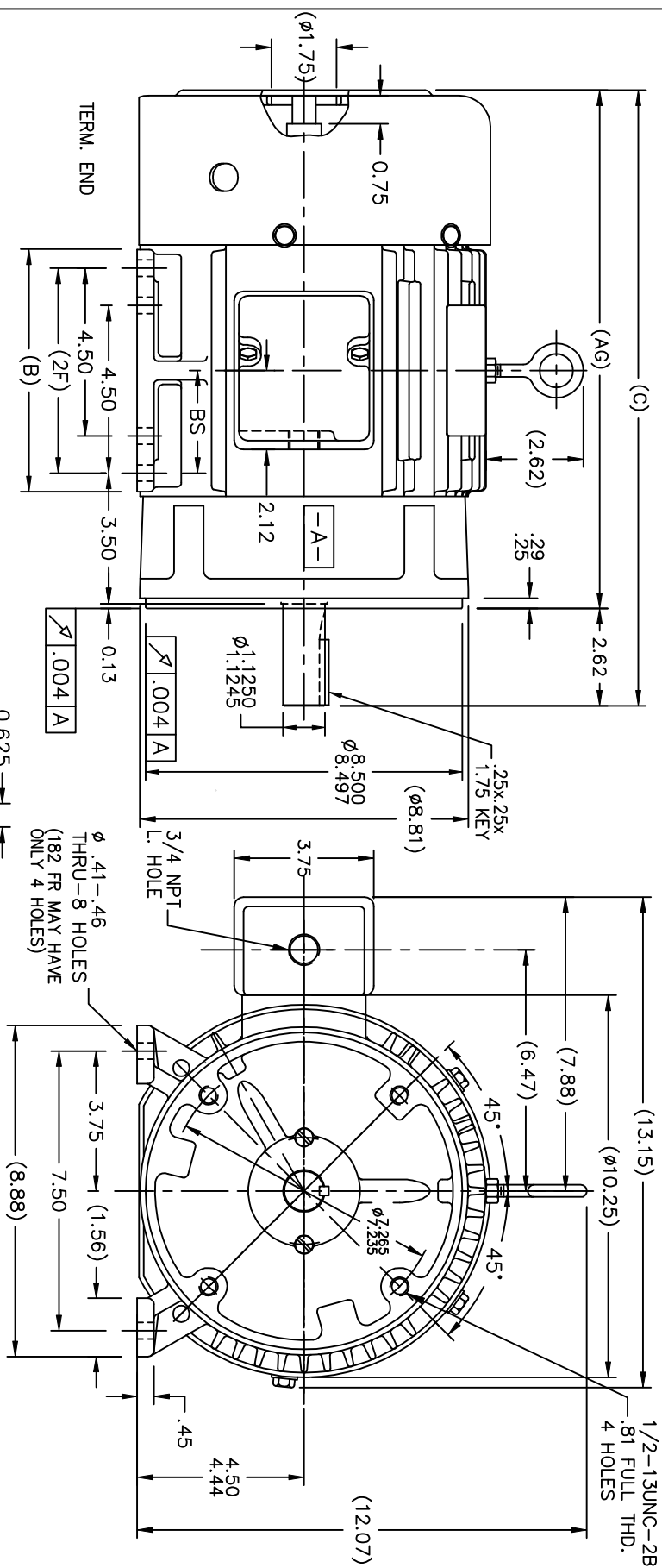
Phase	<b>3</b>	Output HP	<b>3 Hp</b>
Output KW	<b>2.2 kW</b>	Voltage	<b>230/460 V</b>
Speed	<b>1765 rpm</b>	Service Factor	<b>1.15</b>
Frame	<b>182TCVZ</b>	Enclosure	<b>Totally Enclosed Fan Cooled</b>
Thermal Protection	<b>No Protection</b>	Efficiency	<b>90.2 %</b>
Ambient Temperature	<b>40 °C</b>	Frequency	<b>60 Hz</b>
Current	<b>8.0/4.0 A</b>	Power Factor	<b>80</b>
Duty	<b>Continuous</b>	Insulation Class	<b>F</b>
Design Code	<b>B</b>	KVA Code	<b>K</b>
Drive End Bearing Size	<b>207</b>	Opp Drive End Bearing Size	<b>205</b>
UL	<b>Recognized</b>	CSA	<b>Y</b>
CE	<b>Y</b>	IP Code	<b>54</b>
Number of Speeds	<b>1</b>		

### Technical Specifications

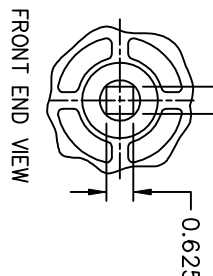
Electrical Type	<b>Squirrel Cage Induction Run</b>	Starting Method	<b>Across The Line</b>
Poles	<b>4</b>	Rotation	<b>Reversible</b>
Resistance Main	<b>3.76 Ohms</b>	Mounting	<b>Rigid Base</b>
Motor Orientation	<b>Shaft Down</b>	Drive End Bearing	<b>Ball</b>
Opp Drive End Bearing	<b>Ball</b>	Frame Material	<b>Cast Iron</b>
Shaft Type	<b>Special Extension Both Sides</b>	Assembly/Box Mounting	<b>W6</b>
Outline Drawing	<b>A-SS69911-575</b>	Connection Drawing	<b>A-EE7308AG</b>

This is an uncontrolled document once printed or downloaded and is subject to change without notice. Date Created:08/24/2023

SS69911



DASH	FR.	C	B	2F	BS	AG
575	182TC	15.94	5.50	4.50	2.25	13.32
675	182/4TC	16.94	6.50	5.50	2.75	14.32



- NOTES:
1. BOX CAN BE MOUNTED ON OPPOSITE SIDE BY REMOVING BRACKETS & TURNING FRAME 180°.
  2. BOX CAN BE ROTATED IN 90° STEPS.
  3. NAMEPLATE TO BE READ FROM CONDUIT BOX SIDE OF MOTOR.

TOLERANCES UNLESS SPECIFIED	
DEC.	INCHES
X	±.1
.XX	±.03
.XXX	±.005
.XXXX	±.0005

TITLE OUTLINE  
180T FR. - BB - TS - TEFC - C'FACE

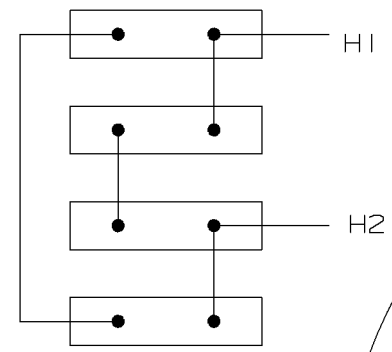
NO.	REVISION	BY & DATE

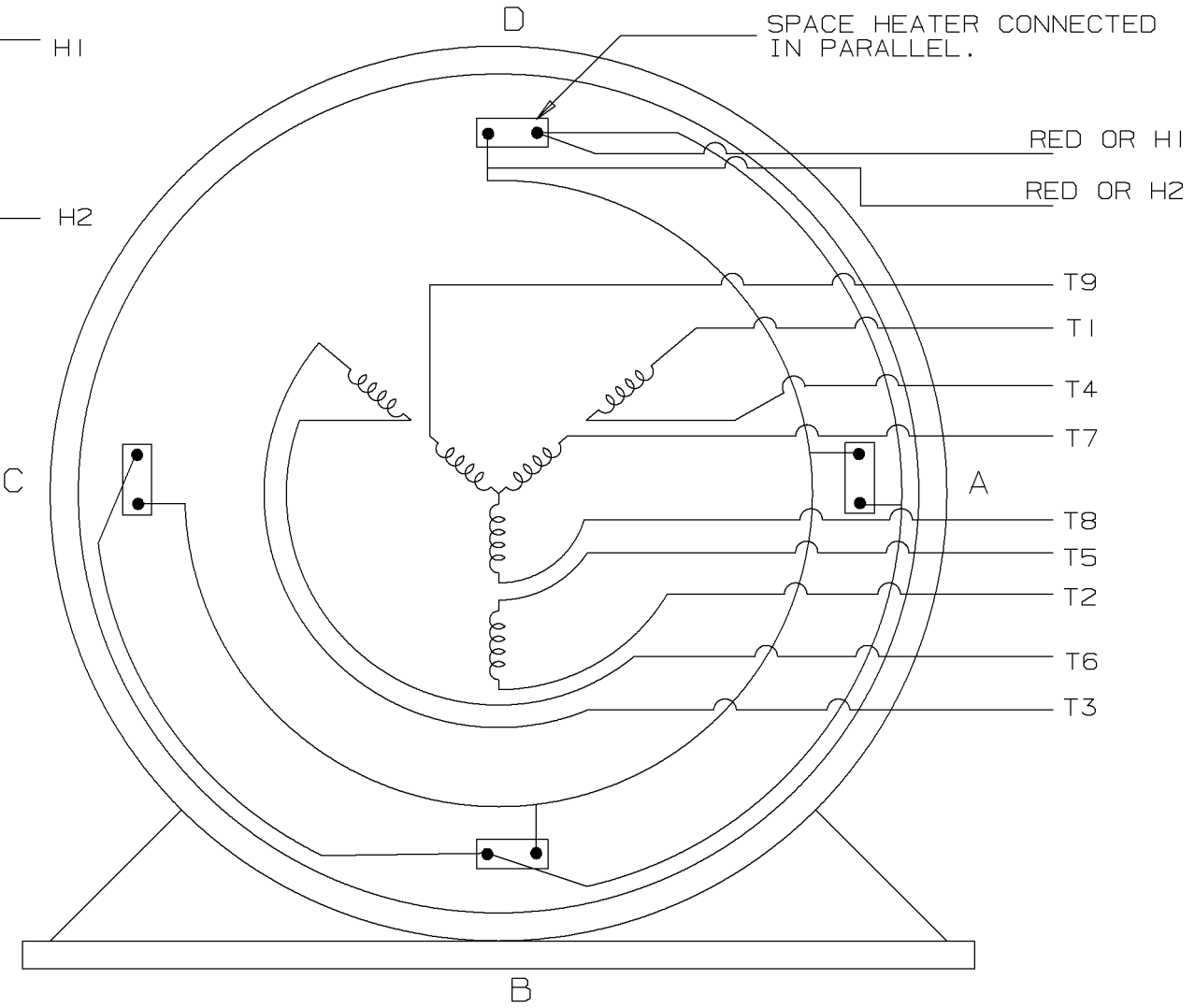
FINISH	CAD FILE	SIZE	DRAWING NO.	PAGE	OF	REV.
	SS69911	A	SS69911			

A- EE7308AG

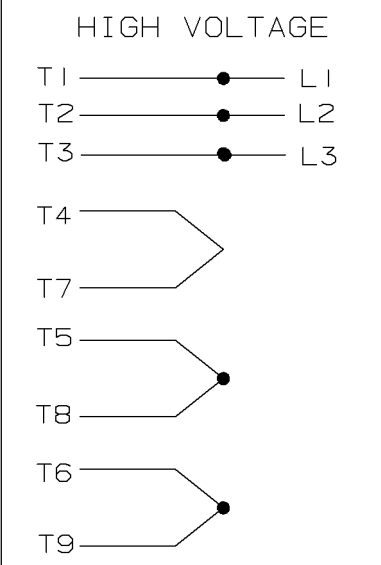
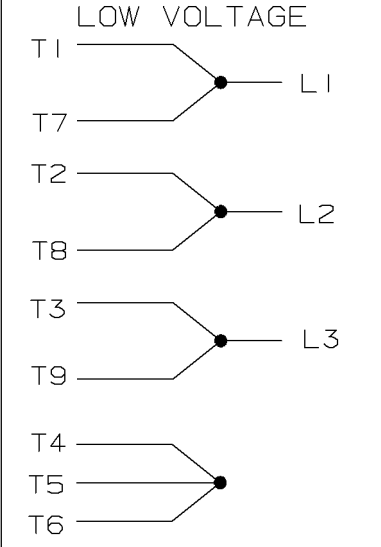
SPACE HEATERS CONNECTED IN SERIES PARALLEL



SPACE HEATER CONNECTED IN PARALLEL.



VIEW OF TERMINAL END



				✓ MAX. SURFACE ROUGHNESS UNLESS NOTED OTHERWISE	UNLESS OTHERWISE SPECIFIED DIMENSIONS ARE IN INCHES TOL. ON XX±.02 XXX±.005 XXXX±.0005 ANGLES± 7'30"		
				MATL SPEC			DRAWN BY PGK 09-18-1996
				FINISH	MARATHON ELECTRIC		CHKD BY ML 10-02-1996
7	10-02-1996	REDRAWN ON CADD & REVISED TO HAVE LEADS FOR HEATER MARK H1 OR H2 CN 22969		PGK	WAUSAU, WISCONSIN 54401		APPD BY GK 10-02-1996
REV	DATE	CHANGE		NAME	PART NAME CONNECTION DIAGRAM THREE PHASE - 9 LEAD		DRWG NO A- EE7308AG

SHOP BOOK | PURCHASED | DISTRIBUTION - WA - LB - WP - LM - BR | CADD FILE NO. | EE7308AG