

# PRODUCT INFORMATION PACKET



Model No: 182TTFR4340

Catalog No: C382

Other Purpose Motor, 3 & 2 HP, 3 Ph, 60 & 50 Hz, 208-230/460 & 190/380 V, 1800 & 1500 RPM,  
182TC Frame, TEFC

Regal and Marathon are trademarks of Regal Rexnord Corporation or one of its affiliated companies.

©2023 Regal Rexnord Corporation, All Rights Reserved. MC017097E

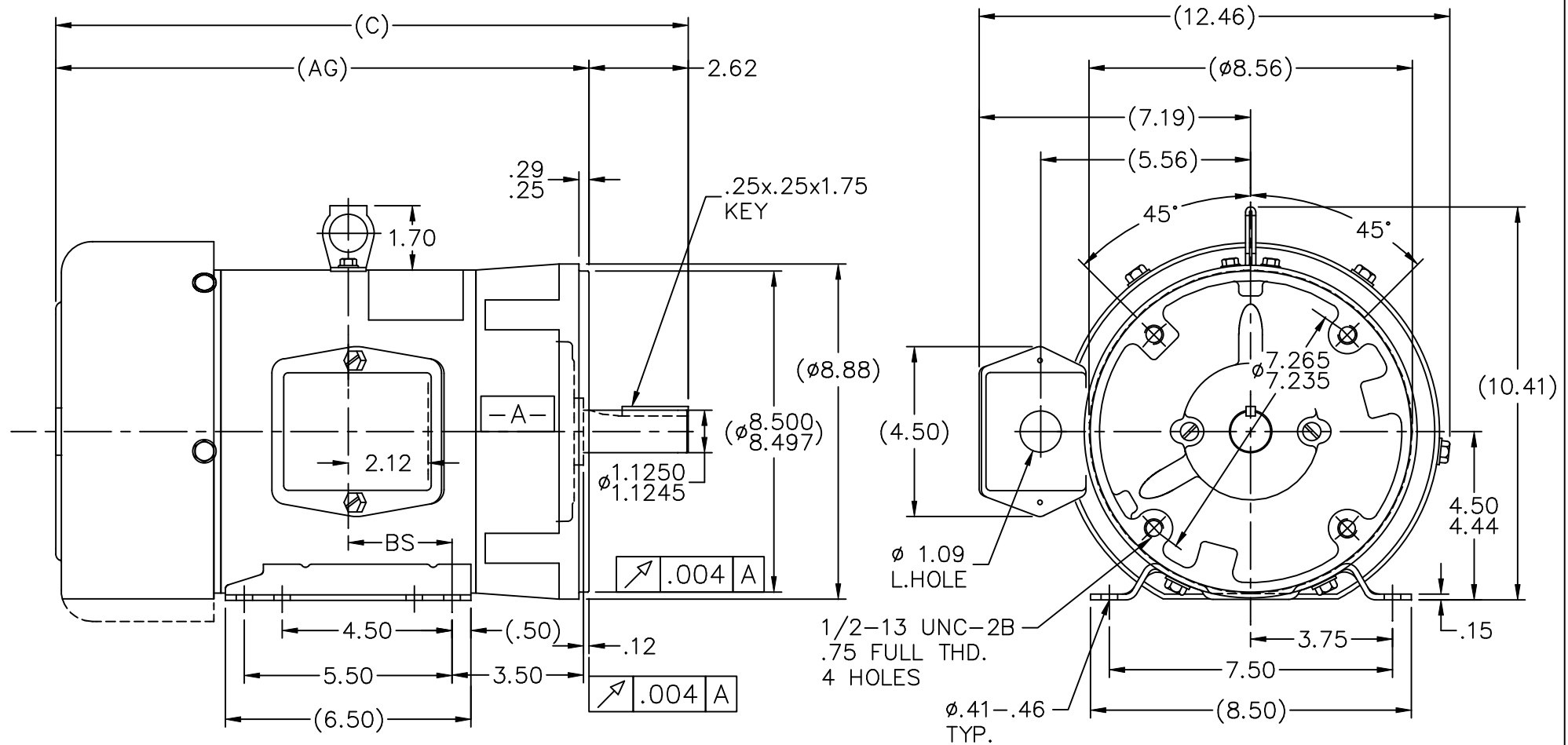


### Nameplate Specifications

Phase	3	Output HP	3 & 2 Hp
Output KW	2.2 & 1.5 kW	Voltage	208-230/460 & 190/380 V
Speed	1760 & 1470 rpm	Service Factor	1.15 & 1.15
Frame	182TC	Enclosure	Totally Enclosed Fan Cooled
Thermal Protection	No Protection	Efficiency	87.5 & 88.5 %
Ambient Temperature	40 °C	Frequency	60 & 50 Hz
Current	9-8.4/4.2 & 7.4/3.7 A	Power Factor	76
Duty	Continuous	Insulation Class	F
Design Code	B	KVA Code	K
Drive End Bearing Size	6207	Opp Drive End Bearing Size	6205
UL	Recognized	CSA	Y
CE	Y	IP Code	43
Number of Speeds	1		


### Technical Specifications

Electrical Type	Squirrel Cage Induction Run	Starting Method	Across The Line
Poles	4	Rotation	Reversible
Resistance Main	4.65 Ohms	Mounting	Bolt-on Base
Motor Orientation	Horizontal Or Shaft Down	Drive End Bearing	Ball
Opp Drive End Bearing	Ball	Frame Material	Rolled Steel
Shaft Type	T	Overall Length	15.50 in
Frame Length	5.75 in	Shaft Diameter	1.125 in
Shaft Extension	2.75 in	Assembly/Box Mounting	F1/F2 CAPABLE
Connection Drawing	A-EE7308	Outline Drawing	A-SS69258-575



1. CONDUIT BOX CAN BE ROTATED IN 90° STEPS.
2. NAMEPLATE TO BE READ FROM SHAFT END OF MOTOR.
3. REMOVABLE BASE
4. PROVISIONS FOR DRIP COVER

DASH	FR.	C	AG	BS
575	182T	15.50	12.88	2.25
625	182T	16.00	13.38	2.50
675	184T	16.50	13.88	2.75

				TOLERANCES UNLESS SPECIFIED			DRAWN HLB 04-17-2002			
				DEC.	INCHES		CHK	ML 04-17-2002		
4	REVISED DASH'S (AG)	RJW 12-21-2004	ML	.X	±.1	TITLE OUTLINE 180 FR. - TEFC - C' FACE	APPD	PH 04-18-2002		
3	REDRAWN IN AUTOCAD	TAT 06-29-2004	ML	.XX	±.03		SCALE	1=4		
2	REM'D MIN. FRAME LENGTH NOTE, ADD'D -575 MU41322	HLB 04-23-2002	ML	.XXX	±.005		REF			
1	NEW DRAWING MU41322	HLB 04-18-2002	PH	.XXXX	±.0005		FMF			
NO.	REVISION	BY & DATE	CHK	ANG	±7'30"	FINISH	PREV			
THIS DRAWING IN DESIGN AND DETAIL IS OUR PROPERTY AND MUST NOT BE USED EXCEPT IN CONNECTION WITH OUR WORK ALL RIGHTS OF DESIGN AND INVENTION ARE RESERVED THIS IS AN ELECTRONICALLY GENERATED DOCUMENT - DO NOT SCALE THIS PRINT			RFP		CAD FILE ss69258		SIZE A	DRAWING NO. SS69258	PAGE OF	REV. 4
			DIST LB							



				TOLERANCES UNLESS SPECIFIED		 <b>Regal</b> Beloit America, Inc.	DRAWN RM	11/20/1990
5	CHG TO REGAL LOGO	SL 09/10/2015	AB	DEC.	INCHES		CHK ML	11/21/1990
4	REVISED IEC NOTATIONS	MSG 11/15/2011	CMN	.X	±.1		APPD SAS	04/24/2003
3	ADDED IEC NOTATIONS... (U1), (V1) ETC. MU95194	MSG 5/10/2010	MJS	.XX	±.02		SCALE	1=1
2	ADDED THE OPTIONAL CORD CONNECTION MU46318	RDH 04/24/2003	DRS	.XXX	±.005	TITLE CONNECTION DIAGRAM 3ø – DUAL VOLTAGE MOTOR		REF
1	REDRAWN	RM 11/20/1990		.XXXX	±.0005	MAT'L.		FMF
NO.	REVISION	BY & DATE	CHK	ANG	±7"30"	FINISH		PREV
THIS DRAWING IN DESIGN AND DETAIL IS OUR PROPERTY AND MUST NOT BE USED EXCEPT IN CONNECTION WITH OUR WORK ALL RIGHTS OF DESIGN AND INVENTION ARE RESERVED THIS IS AN ELECTRONICALLY GENERATED DOCUMENT – DO NOT SCALE THIS PRINT			RFP		CAD FILE ee7308		SIZE	DRAWING NO. PAGE OF REV.
			DIST WP				A	EE7308 5