

# PRODUCT INFORMATION PACKET



Model No: 182TTFR4038

Catalog No: U605

3 HP General Purpose Motor, 3 phase, 1800 RPM, 200 V, 182T Frame, TEFC  
General Purpose Motors

Regal and Marathon are trademarks of Regal Rexnord Corporation or one of its affiliated companies.  
©2021 Regal Rexnord Corporation, All Rights Reserved. MC017097E



**Nameplate Specifications**

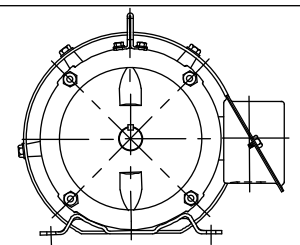
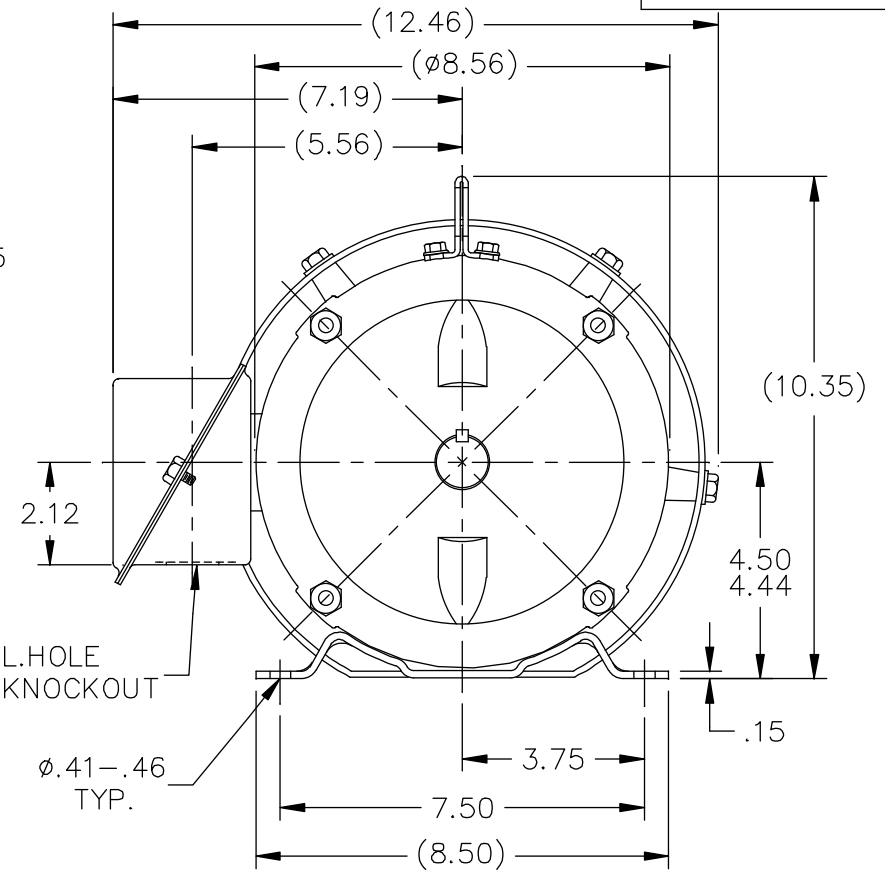
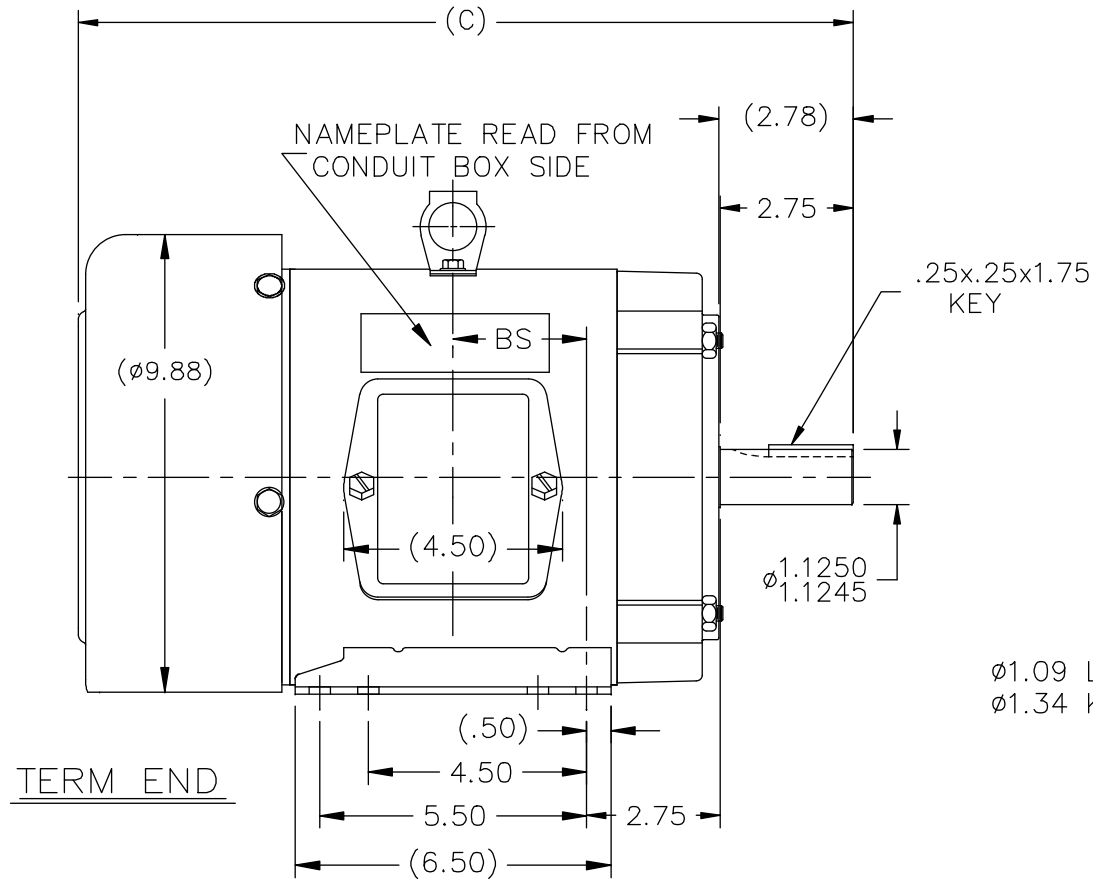
Output HP	3 Hp	Output KW	2.2 kW
Frequency	60 Hz	Voltage	200 V
Current	9.7 A	Speed	1760 rpm
Service Factor	1.15	Phase	3
Efficiency	87.5 %	Power Factor	76
Duty	Continuous	Insulation Class	F
Design Code	B	KVA Code	K
Frame	182T	Enclosure	Totally Enclosed Fan Cooled
Thermal Protection	No	Ambient Temperature	40 °C
Drive End Bearing Size	6206	Opp Drive End Bearing Size	6205
UL	Recognized	CSA	Y
CE	Y	IP Code	43
Number of Speeds	1		

**Technical Specifications**

Electrical Type	Squirrel Cage Induction Run	Starting Method	Across The Line
Poles	4	Rotation	Reversible
Resistance Main	4.65 Ohms	Mounting	Rigid Base
Motor Orientation	Horizontal	Drive End Bearing	Ball
Opp Drive End Bearing	Ball	Frame Material	Rolled Steel
Shaft Type	T	Overall Length	14.97 in
Frame Length	5.75 in	Shaft Diameter	1.125 in
Shaft Extension	2.75 in	Assembly/Box Mounting	F1/F2 CAPABLE
Connection Drawing	A-EE7300	Outline Drawing	A-SS65651-575

This is an uncontrolled document once printed or downloaded and is subject to change without notice. Date Created:10/12/2021

SS65651



## NOTES

1. CONDUIT BOX CAN BE ROTATED IN 90° STEPS.
2. CONDUIT BOX CAN BE MOUNTED ON OPPOSITE SIDE BY REMOVING BRACKETS AND TURNING FRAME 180°.

DASH	FR.	C	BS	MOUNTING
575	182T	14.97	2.25	F1 OR F2
625	182/4T	15.47	2.50	F1 OR F2
675	182/4T	15.97	2.75	F1 OR F2
725	182/4T	16.47	3.00	F1 ONLY
775	182/4T	16.97	3.25	F1 ONLY
825	182/4T	17.47	3.50	F1 ONLY

NO.	REVISION	BY & DATE	CHK	ANG	±7'30"
11	REMOVED "TS" FROM TITLE BLOCK	TAT 06-15-2006	ML	TOLERANCES UNLESS SPECIFIED	
10	ADDED NEW LIFT LUG CN 32420	ERH 09-24-2003	ML	DEC.	INCHES
9	ADDED LIFT LUG CN 34025	DRS 06-21-2001		.X	±.1
8	REVISED MOUNTING CN 27400-320	BJW 11-12-1999		.XX	±.03
7	ADDED MOUNTING TO DASH TABLE	MRB 10-17-1998		.XXX	±.005
6	RE-ISSUE ADDED (7.19) DIMENSION.	MH 01-29-1998		.XXXX	±.0005



TITLE OUTLINE  
180T FR. - BB - TEFC

MAT'L.

FINISH

DRAWN DJK 04-16-1993
CHK ML 07-20-1993
APPD GK 07-20-1993
SCALE 1=4
REF
FMF
PREV

THIS DRAWING IN DESIGN AND DETAIL IS OUR PROPERTY AND MUST NOT BE USED EXCEPT IN CONNECTION WITH OUR WORK ALL RIGHTS OF DESIGN AND INVENTION ARE RESERVED THIS IS AN ELECTRONICALLY GENERATED DOCUMENT - DO NOT SCALE THIS PRINT

RFP  
DIST LB

CAD FILE ss65651

SIZE  
A

DRAWING NO. PAGE OF  
SS65651 11

THREE PHASE - SINGLE VOLTAGE  
MOTOR - CONDUIT BOX @ 'A'

TO REVERSE ROTATION:  
INTERCHANGE ANY TWO  
LINE LEAD CONNECTIONS.

TERMINAL BLOCK WHEN SPECIFIED



IF MOTOR HAS  
6 LEADS



A-9806 DECAL

OPTIONAL CORD  
CONNECTION



VIEW OF TERMINAL END

DRAWING REVISION AB	REVISION BY JJB	DATE 06-27-2017
ECO ECO-0125361	APPROVED BY TB	DATE 06-27-2017
ECO DESCRIPTION UPDATED TO CURRENT STANDARDS		
<small>COPYRIGHT REGAL BELOIT AMERICA, INC. ALL RIGHTS RESERVED.          PROPRIETARY AND CONFIDENTIAL INFORMATION - THIS DOCUMENT IS THE PROPERTY OF          REGAL BELOIT AMERICA, INC. ("OWNER") AND CONTAINS OWNER'S PROPRIETARY          INFORMATION. ANY PERSON, CORPORATION OR OTHER FIRM RECEIVING IT IS DEEMED,          BY RECEIVING IT, TO AGREE THAT IT, AND/OR ANY PART OF IT, SHALL NOT BE DISCLOSED          TO ANY PERSON, CORPORATION OR OTHER ENTITY, DUPLICATED, AND/OR USED, EXCEPT          AS EXPRESSLY APPROVED IN WRITING IN ADVANCE BY OWNER. THIS DOCUMENT SHALL          BE RETURNED TO OWNER UPON REQUEST. IT MAY BE SUBJECT TO CERTAIN          RESTRICTIONS UNDER APPLICABLE EXPORT CONTROL LAWS AND REGULATIONS.</small>		

DRAWN BY DA
DATE 03-26-1993
APPROVED BY TB
DATE 03-26-1993
REFERENCE
THIRD ANGLE PROJECTION



Regal Beloit America, Inc.

DESCRIPTION  
**CONNECTION DIAGRAM**  
EXTERNAL - SINGLE VOLTAGE - 3Ø MOTOR

MATERIAL PROCESS/FINISH

SIZE A	DRAWING NUMBER EE7300	SHEET 1 OF 1
-----------	--------------------------	-----------------