

# PRODUCT INFORMATION PACKET



Model No: 182TTFR4013

Catalog No: U736

3 HP General Purpose Motor, 3 phase, 3600 RPM, 200 V, 182TC Frame, TEFC  
General Purpose Motors

Regal and Marathon are trademarks of Regal Rexnord Corporation or one of its affiliated companies.  
©2021 Regal Rexnord Corporation, All Rights Reserved. MC017097E



**Nameplate Specifications**

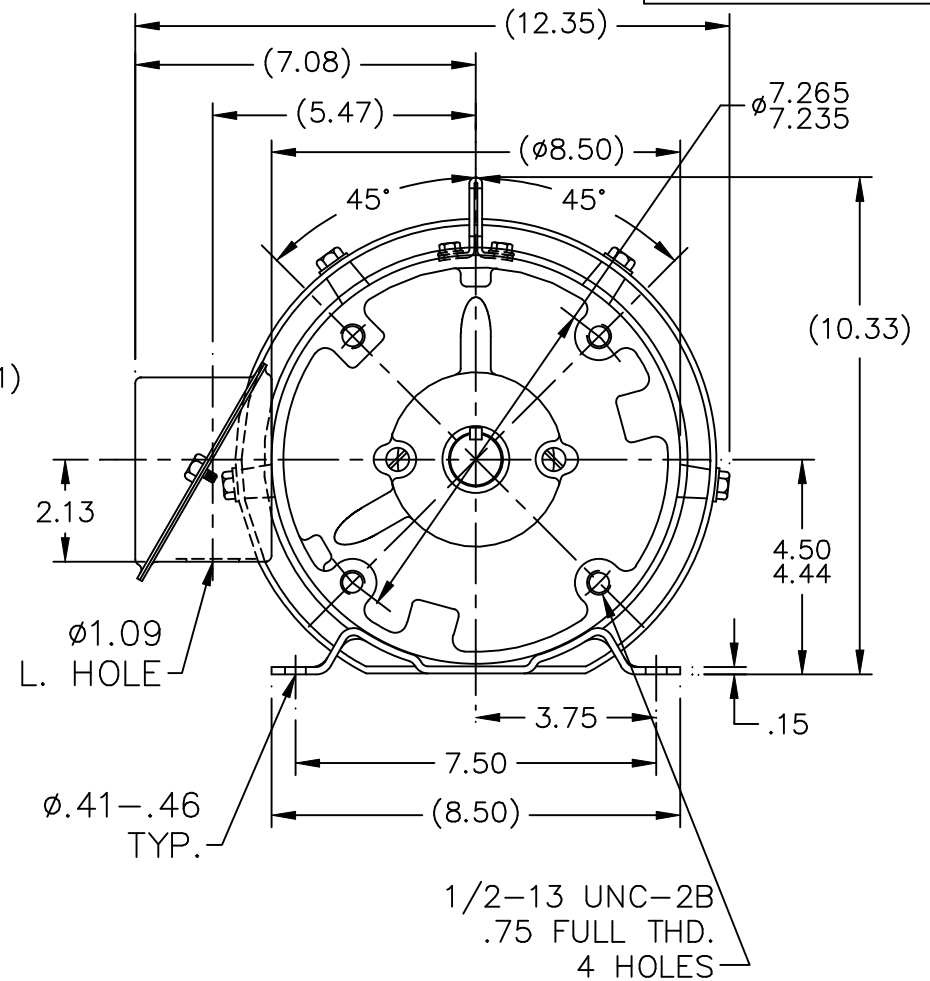
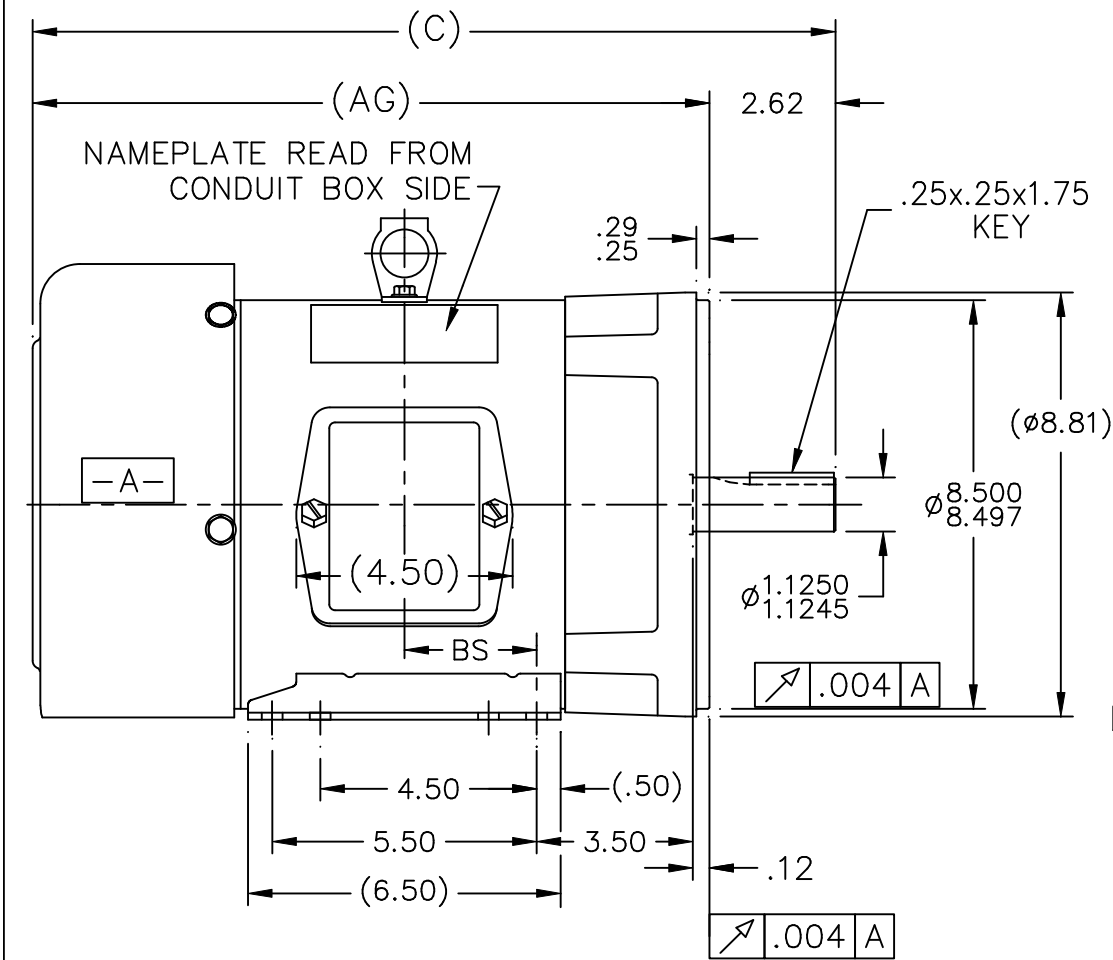
Output HP	3 Hp	Output KW	2.2 kW
Frequency	60 Hz	Voltage	200 V
Current	8.5 A	Speed	3480 rpm
Service Factor	1.15	Phase	3
Efficiency	85.5 %	Power Factor	88
Duty	Continuous	Insulation Class	F
Design Code	B	KVA Code	J
Frame	182TC	Enclosure	Totally Enclosed Fan Cooled
Thermal Protection	No	Ambient Temperature	40 °C
Drive End Bearing Size	6207	Opp Drive End Bearing Size	6205
UL	Recognized	CSA	Y
CE	N	IP Code	43
Number of Speeds	1		

**Technical Specifications**

Electrical Type	Squirrel Cage Induction Run	Starting Method	Across The Line
Poles	2	Rotation	Reversible
Resistance Main	3.57 Ohms	Mounting	Rigid Base
Motor Orientation	Horizontal	Drive End Bearing	Ball
Opp Drive End Bearing	Ball	Frame Material	Rolled Steel
Shaft Type	T	Overall Length	15.69 in
Frame Length	5.75 in	Shaft Diameter	1.125 in
Shaft Extension	2.75 in	Assembly/Box Mounting	F1/F2 Capable
Connection Drawing	A-EE7300	Outline Drawing	A-SS65653-575

This is an uncontrolled document once printed or downloaded and is subject to change without notice. Date Created:10/12/2021

SS65653



DASH	FR.	C	BS	AG	MOUNTING
575	182T	15.69	2.25	13.07	F1 OR F2
675	182/4T	16.69	2.75	14.07	F1 OR F2
725	182/4T	17.19	3.00	14.57	F1 ONLY
775	182/4T	17.69	3.25	15.07	F1 ONLY

BOX CAN BE ROTATED IN 90° STEPS.  
BOX CAN BE MOUNTED ON OPPOSITE SIDE BY  
REMOVING BRACKETS & TURNING FRAME 180°.

			TOLERANCES UNLESS SPECIFIED		MARATHON ELECTRIC	DRAWN DJK 01-04-1993	
NO.	REVISION	BY & DATE	CHK	ANG		SCALE	1=4
13	WAS LINCOLN NOW MARATHON T-BLOCK	RJW 01-02-2008	ML	DEC.	INCHES	CHK	ML 01-05-1993
12	UPDATED DRAWING	RJW 04-20-2007		.X	±.1	APPD	GK 01-05-1993
11	ADDED LEESON LIFT LUG CN34025	MSG 08-14-2001		.XX	±.03	TITLE OUTLINE	
10	REVISED MOUNTING CN27400-320	CAE 05-11-2000		.XXX	±.005	180 FR. - BB - TS - TEFC	
9	ADDED MOUNTING TYPE CN27451	DRS 05-05-1999		.XXXX	±.0005	MAT'L.	
NO.	REVISION	BY & DATE	CHK	ANG	±7'30"	FINISH	
THIS DRAWING IN DESIGN AND DETAIL IS OUR PROPERTY AND MUST NOT BE USED EXCEPT IN CONNECTION WITH OUR WORK ALL RIGHTS OF DESIGN AND INVENTION ARE RESERVED THIS IS AN ELECTRONICALLY GENERATED DOCUMENT - DO NOT SCALE THIS PRINT			RFP	01-05-1993	CAD FILE ss65653	SIZE	DRAWING NO. PAGE OF
			DIST	LB		A	SS65653 13

# THREE PHASE - SINGLE VOLTAGE MOTOR - CONDUIT BOX @ 'A'

TO REVERSE ROTATION:  
INTERCHANGE ANY TWO  
LINE LEAD CONNECTIONS.

## TERMINAL BLOCK WHEN SPECIFIED



### IF MOTOR HAS 6 LEADS



A-9806 DECAL

### OPTIONAL CORD CONNECTION



DRAWING REVISION AB	REVISION BY JJB	DATE 06-27-2017
ECO ECO-0125361	APPROVED BY TB	DATE 06-27-2017
ECO DESCRIPTION UPDATED TO CURRENT STANDARDS		
<small>COPYRIGHT REGAL BELOIT AMERICA, INC. ALL RIGHTS RESERVED.          PROPRIETARY AND CONFIDENTIAL INFORMATION - THIS DOCUMENT IS THE PROPERTY OF          REGAL BELOIT AMERICA, INC. ("OWNER") AND CONTAINS OWNER'S PROPRIETARY          INFORMATION. ANY PERSON, CORPORATION OR OTHER FIRM RECEIVING IT IS DEEMED,          BY RECEIVING IT, TO AGREE THAT IT, AND/OR ANY PART OF IT, SHALL NOT BE DISCLOSED          TO ANY PERSON, CORPORATION OR OTHER ENTITY, DUPLICATED, AND/OR USED, EXCEPT          AS EXPRESSLY APPROVED IN WRITING IN ADVANCE BY OWNER. THIS DOCUMENT SHALL          BE RETURNED TO OWNER UPON REQUEST. IT MAY BE SUBJECT TO CERTAIN          RESTRICTIONS UNDER APPLICABLE EXPORT CONTROL LAWS AND REGULATIONS.</small>		

DRAWN BY DA
DATE 03-26-1993
APPROVED BY TB
DATE 03-26-1993
REFERENCE
THIRD ANGLE PROJECTION



Regal Beloit America, Inc.

DESCRIPTION  
**CONNECTION DIAGRAM**  
EXTERNAL - SINGLE VOLTAGE - 3Ø MOTOR

MATERIAL PROCESS/FINISH

SIZE A	DRAWING NUMBER EE7300	SHEET 1 OF 1
-----------	--------------------------	-----------------