

# PRODUCT INFORMATION PACKET

**marathon®**  
Motors

Model No: 182TTFR16017

Catalog No: M875B

Vertical Pump Motor, 3 & 2 HP, 3 Ph, 60 & 50 Hz, 230/460 & 190/380 V, 3600 & 3000 RPM,  
182HPV Frame, TEFC



Regal and Marathon are trademarks of Regal Rexnord Corporation or one of its affiliated companies.

©2023 Regal Rexnord Corporation, All Rights Reserved. MC017097E

**RegalRexnord**

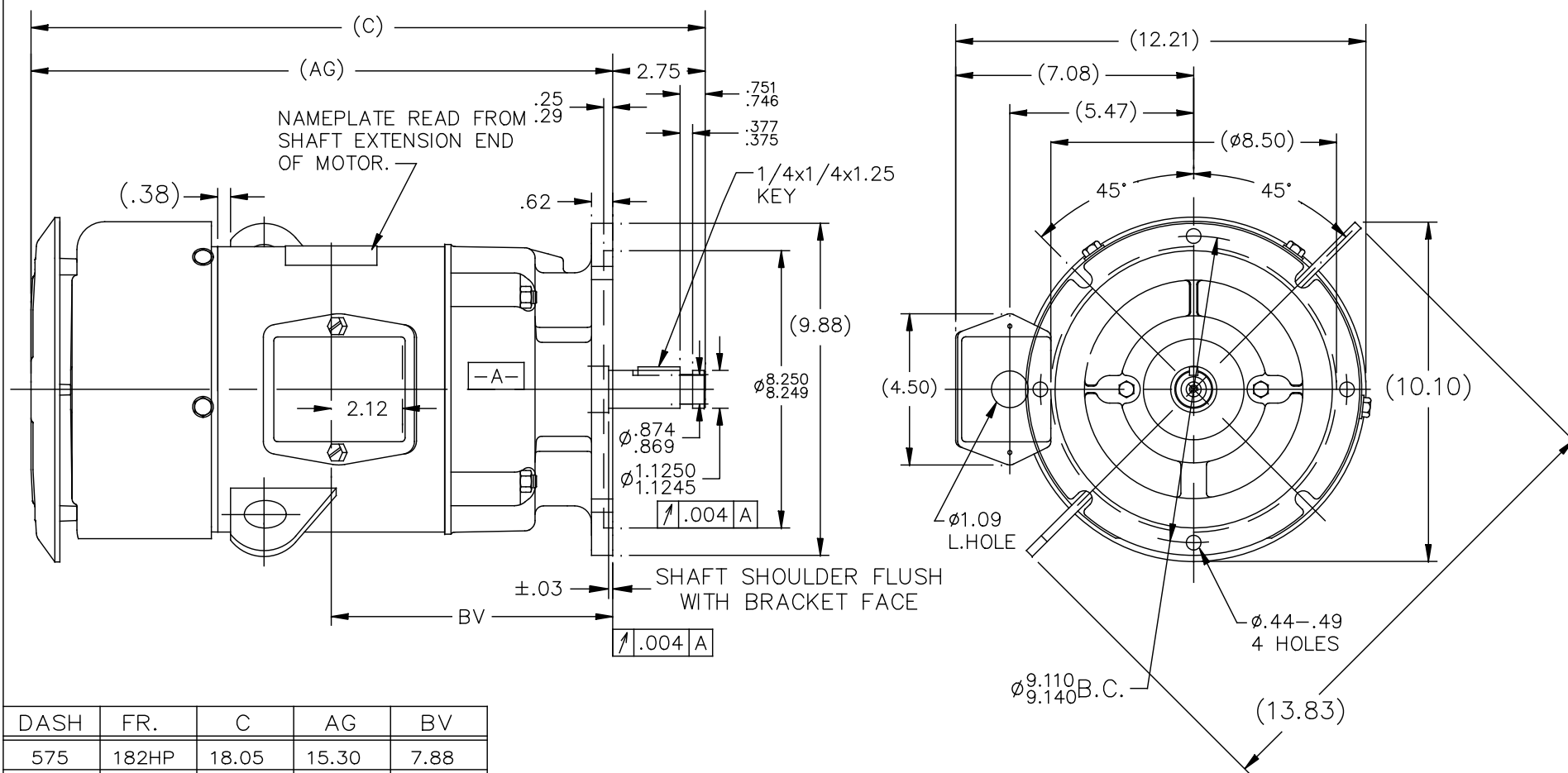
### Nameplate Specifications

Phase	3	Output HP	3 & 2 Hp
Output KW	2.2 & 1.5 kW	Voltage	230/460 & 190/380 V
Speed	3525 & 2920 rpm	Service Factor	1.15 & 1.0
Frame	182HPV	Enclosure	Totally Enclosed Fan Cooled
Thermal Protection	No Protection	Efficiency	87.5 & 83.5 %
Ambient Temperature	40 °C	Frequency	60 & 50 Hz
Current	7.6/3.8 & 6.4/3.2 A	Power Factor	85
Duty	Continuous	Insulation Class	F
Design Code	B	KVA Code	K
Drive End Bearing Size	6207	Opp Drive End Bearing Size	6205
UL	Recognized	CSA	Y
CE	Y	IP Code	43
Number of Speeds	1		


### Technical Specifications

Electrical Type	Squirrel Cage Induction Run	Starting Method	Across The Line
Poles	2	Rotation	Reversible
Resistance Main	3.56 Ohms	Mounting	Round
Motor Orientation	Shaft Down	Drive End Bearing	Ball
Opp Drive End Bearing	Ball	Frame Material	Rolled Steel
Shaft Type	HP	Overall Length	18.05 in
Shaft Diameter	1.125 in	Shaft Extension	2.75 in
Assembly/Box Mounting	F1/F2 CAPABLE		
Connection Drawing	EE7308	Outline Drawing	SS69314-775

SS69314



DASH	FR.	C	AG	BV
575	182HP	18.05	15.30	7.88
675	182/4	19.05	16.30	8.38
775	182/4	20.05	17.30	8.88
825	182/4	20.55	17.80	9.12
925	182/4	21.55	18.80	9.62

				TOLERANCES UNLESS SPECIFIED		 <b>Regal Beloit America, Inc.</b>	DRAWN TJB 10-03-2002	
NO.	REVISION	BY & DATE	CHK	ANG	±7'30"		CHK	ML 10-03-2002
5	ADDED ITEM 925	KIR 03/10/16	ST	DEC.	INCHES	<b>TITLE OUTLINE</b> 180HP FR. - BB - TS - TEFC - 'P' BASE <b>MAT'L.</b> <b>FINISH</b>	APPD	PH 10-04-2002
4	ADDED ±.03 TOL. SHAFT SHOULDER	KS 1-3-2012	TB	.X	±.1		SCALE	1=4.5
3	REMOVED "O" DIM. AT NOTE FOR SHAFT SHOULDER	RJW 04-20-2006	ML	.XX	±.03		REF	
2	ADD DASH 825 LINE	RWR 02-06-2004	PH	.XXX	±.005		FMF	
1	NEW DRAWING	MU43594 TJB 10-04-2002	PH	.XXXX	±.0005		PREV	
THIS DRAWING IN DESIGN AND DETAIL IS OUR PROPERTY AND MUST NOT BE USED EXCEPT IN CONNECTION WITH OUR WORK ALL RIGHTS OF DESIGN AND INVENTION ARE RESERVED THIS IS AN ELECTRONICALLY GENERATED DOCUMENT - DO NOT SCALE THIS PRINT		RFP	CAD FILE ss69314		SIZE	DRAWING NO.	PAGE	OF
		DIST LB			A	SS69314		REV. 5



				TOLERANCES UNLESS SPECIFIED		 <b>Regal Beloit America, Inc.</b>	DRAWN RM 11/20/1990	
5	CHG TO REGAL LOGO	SL 09/10/2015	AB	DEC.	INCHES		CHK ML 11/21/1990	
4	REVISED IEC NOTATIONS	MSG 11/15/2011	CMN	.X	±.1	<b>TITLE CONNECTION DIAGRAM</b> <b>3Ø – DUAL VOLTAGE MOTOR</b> <b>MAT'L.</b> <b>FINISH</b>	APPD SAS 04/24/2003	
3	ADDED IEC NOTATIONS... (U1), (V1) ETC. MU95194	MSG 5/10/2010	MJS	.XX	±.02		SCALE 1=1	
2	ADDED THE OPTIONAL CORD CONNECTION MU46318	RDH 04/24/2003	DRS	.XXX	±.005		REF	
1	REDRAWN	RM 11/20/1990		.XXXX	±.0005		FMF	
NO.	REVISION	BY & DATE	CHK	ANG	±7'30"	FINISH	PREV	
THIS DRAWING IN DESIGN AND DETAIL IS OUR PROPERTY AND MUST NOT BE USED EXCEPT IN CONNECTION WITH OUR WORK ALL RIGHTS OF DESIGN AND INVENTION ARE RESERVED THIS IS AN ELECTRONICALLY GENERATED DOCUMENT – DO NOT SCALE THIS PRINT			RFP	CAD FILE ee7308		SIZE A	DRAWING NO. EE7308	PAGE OF 5
			DIST WP					



# CERTIFICATION DATA SHEET

**P.O. BOX 8003  
WAUSAU, WI 54401-8003  
PH. 715-675-3311**

**CONN. DIAGRAM:** EE7308

**MODEL #:** 182TTFR16017 AA

**OUTLINE:** SS69314-775

**MOUNTING:** F1/F2 CAPABLE

**WINDING #:** 1822101 R2 1

## TYPICAL MOTOR PERFORMANCE DATA

HP	kW	SYNC. RPM	F.L. RPM	FRAME	ENCLOSURE	KVA CODE	DESIGN
3&2	2.24&1.49	3600	3525&2920	182HPV	TEFC	K	B

PH	Hz	VOLTS	AMPS	START TYPE	DUTY	INSL	S.F.	AMB°C
3	60/50	230/460&190/380	7.6/3.8&6.4/3.2	ACROSS THE LINE	CONTINUOUS	F3	1.15/1.0	40

<b>FULL LOAD EFF:</b>	87.5&83.5	<b>3/4 LOAD EFF:</b>	86.5	<b>1/2 LOAD EFF:</b>	84	<b>GTD. EFF</b>		<b>ELEC. TYPE</b>
<b>FULL LOAD PF:</b>	85&84.3	<b>3/4 LOAD PF:</b>	79	<b>1/2 LOAD PF:</b>	70	85.5		SQ CAGE IND RUN

<b>F.L. TORQUE</b>		<b>LOCKED ROTOR AMPS</b>		<b>L.R. TORQUE</b>		<b>B.D. TORQUE</b>		<b>F.L. RISE°C</b>
4.5 LB-FT		58 / 29		9 LB-FT 200 %		16 LB-FT 356 %		50

<b>SOUND PRESSURE @ 3 FT.</b>		<b>SOUND POWER</b>		<b>ROTOR WK^2</b>		<b>MAX. WK^2</b>		<b>SAFE STALL TIME</b>		<b>STARTS / HOUR</b>		<b>APPROX. MOTOR WGT</b>
72 dBA		82 dBA		0.23 LB-FT^2		4 LB-FT^2		15 SEC.		2		85 LBS.

## \*\*\* SUPPLEMENTAL INFORMATION \*\*\*

<b>DE BRACKET TYPE</b>	<b>ODE BRACKET TYPE</b>	<b>MOUNT TYPE</b>	<b>ORIENTATION</b>	<b>SEVERE DUTY</b>	<b>HAZARDOUS LOCATION</b>	<b>DRIP COVER</b>	<b>SCREENS</b>	<b>PAINT</b>
P-BASE	STANDARD	ROUND	SHAFT DOWN	FALSE	NONE	TRUE	NONE	BLUE (ENAMEL)

<b>BEARINGS</b>		<b>GREASE</b>	<b>SHAFT TYPE</b>	<b>SPECIAL DE</b>	<b>SPECIAL ODE</b>	<b>SHAFT MATERIAL</b>	<b>FRAME MATERIAL</b>
<b>DE</b>	<b>ODE</b>						
BALL	BALL	POLYREX EM	HP	NONE	NONE	1144 STRESSPROOF (C-223)	ROLLED STEEL
6207	6205						

<b>THERMO-PROTECTORS</b>				<b>THERMISTORS</b>	<b>CONTROL</b>	<b>SPACE HEATERS</b>
<b>THERMOSTATS</b>	<b>PROTECTORS</b>	<b>WDG RTDs</b>	<b>BRG RTDs</b>			
NONE	NOT	NONE	NONE	NONE	FALSE	NONE VOLTS

\*  
  
N  
  
O  
  
T  
  
E  
  
S  
  
\*

<b>INVERTER TORQUE:</b>	NONE
<b>INV. HP SPEED RANGE:</b>	NONE
<b>ENCODER:</b>	NONE
NONE	NONE
NONE	NONE PPR
<b>BRAKE:</b>	NONE NONE
NONE	P/N NONE
NONE	NONE
NONE FT-LB	NONE V NONE Hz

**MARATHON ELECTRIC CORPORATION**

TYPICAL PERFORMANCE CURVE for AC MOTOR

Customer

Curve at

460

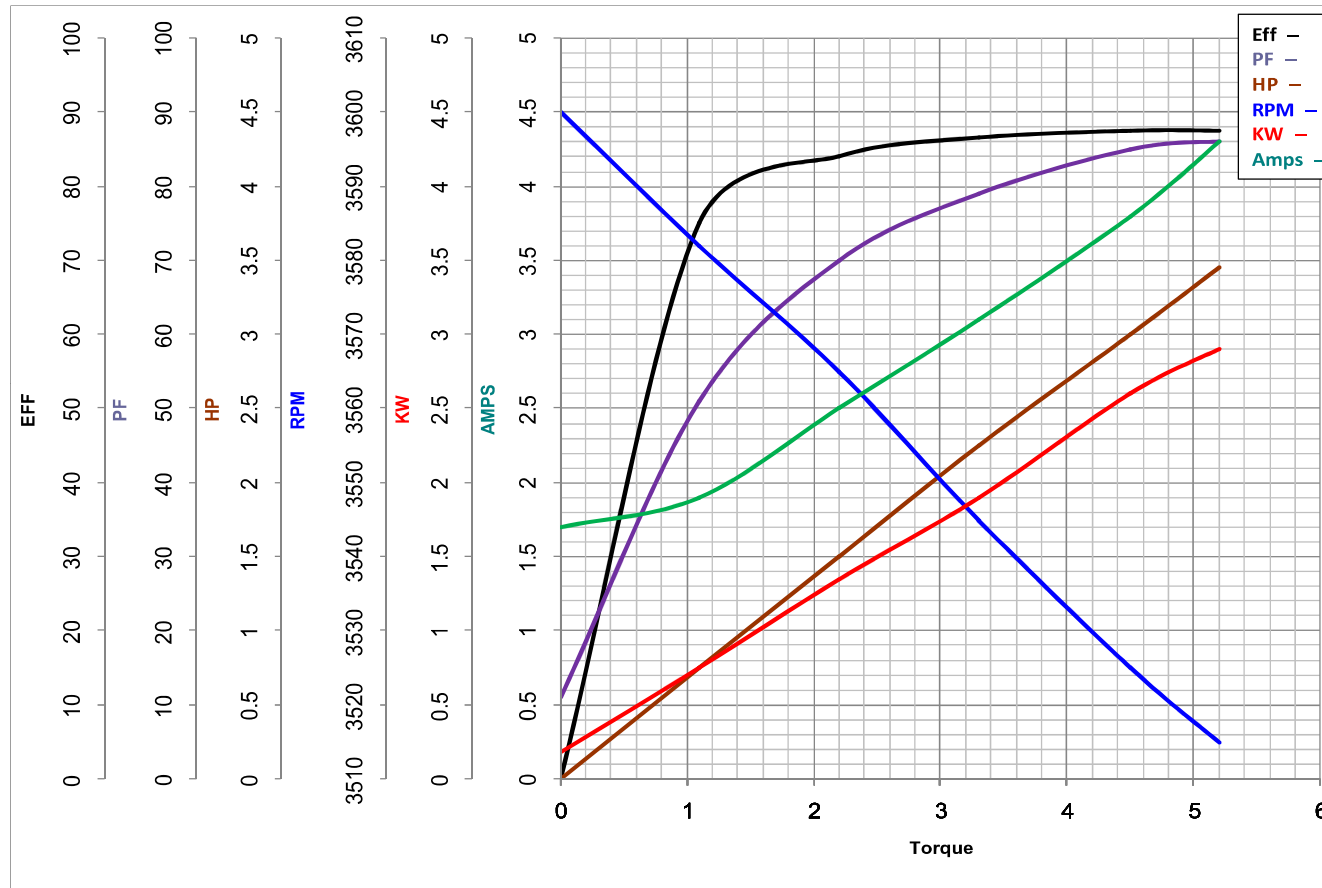
Volts

HP 3&2PHASE 3Model No 182TTFR1601760

HZ

VOLTS 230/460&190/3803

HP

Catalog No M875BHZ 60&50RPM 3525&2920

Torque in Lb.Ft

FL TORQUE 4.5 Lb.FtFL AMPS 7.6/3.8BD TORQUE 16.0 Lb.FtPU TORQUE 10.5 Lb.FtLR TORQUE 9 Lb.FtLR AMPS 29

WINDING 1822101-1

Date 11/5/2018