

# PRODUCT INFORMATION PACKET

**marathon®**  
Motors

Model No: 182TTFN16584

Catalog No: E380A

XRI®-SD Severe Duty Motor, 1.50 & 1.50 HP, 3 Ph, 60 & 50 Hz, 460 & 380 V, 1200 & 1000 RPM,  
182T Frame, TEFC



Regal and Marathon are trademarks of Regal Rexnord Corporation or one of its affiliated companies.

©2023 Regal Rexnord Corporation, All Rights Reserved. MC017097E

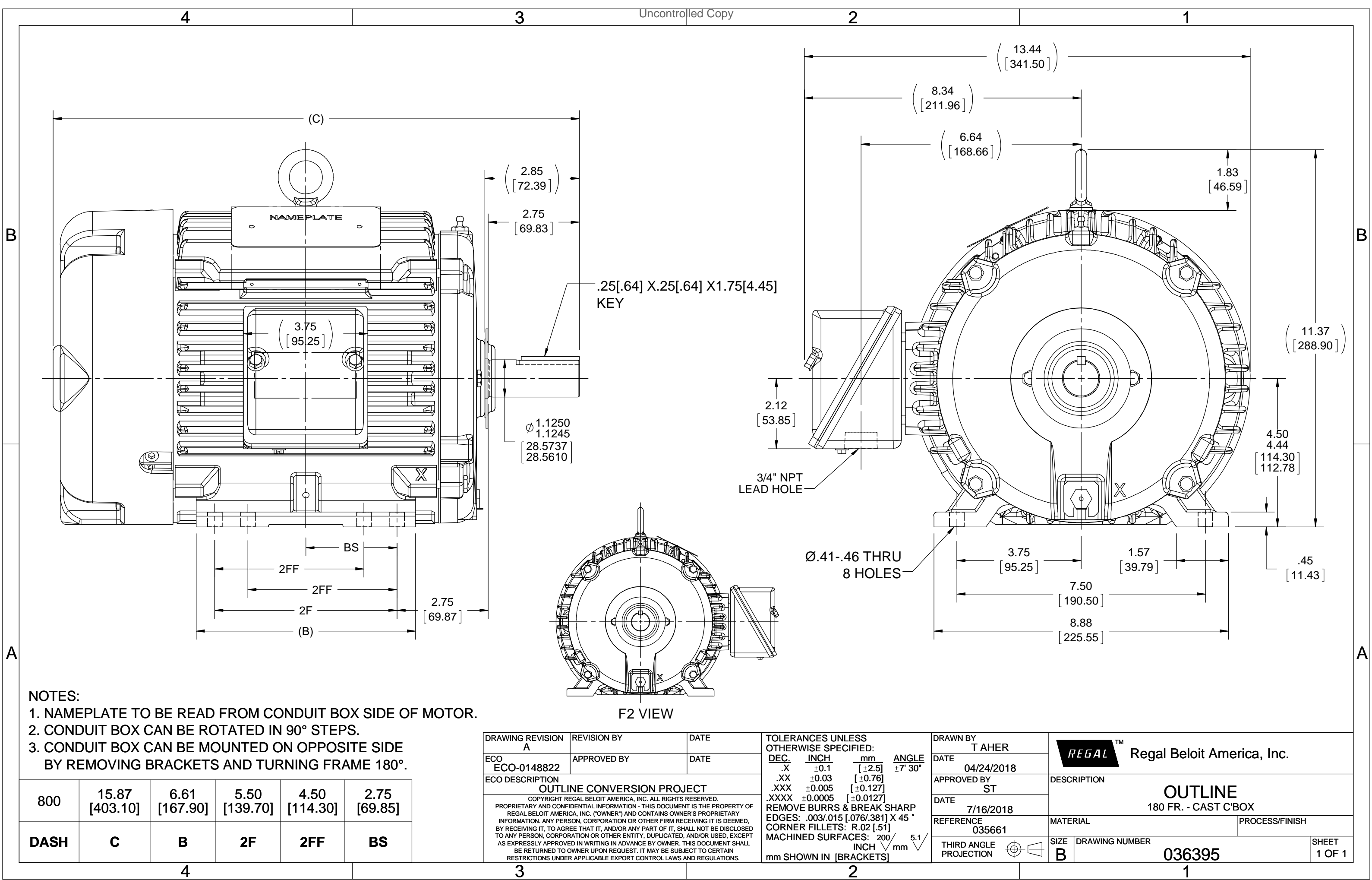
**RegalRexnord**

### Nameplate Specifications

Phase	3	Output HP	1.50 & 1.50 Hp
Output KW	1.1 & 1.1 kW	Voltage	460 & 380 V
Speed	1175 & 965 rpm	Service Factor	1.25 & 1.0
Frame	182T	Enclosure	Totally Enclosed Fan Cooled
Thermal Protection	No Protection	Efficiency	87.5 & 85.5 %
Ambient Temperature	40 °C	Frequency	60 & 50 Hz
Current	2.2 & 2.6 A	Power Factor	71.5
Duty	Continuous	Insulation Class	F
Design Code	B	KVA Code	L
Drive End Bearing Size	6206	Opp Drive End Bearing Size	6206
UL	Recognized	CSA	Y
CE	Y	IP Code	54
Number of Speeds	1		

### Technical Specifications

Electrical Type	Squirrel Cage Inverter Rated	Starting Method	Line Or Inverter
Poles	6	Rotation	Reversible
Resistance Main	7.75 Ohms	Mounting	Rigid Base
Motor Orientation	Horizontal	Drive End Bearing	Ball
Opp Drive End Bearing	Ball	Frame Material	Cast Iron
Shaft Type	T	Overall Length	15.87 in
Frame Length	8.00 in	Shaft Diameter	1.125 in
Shaft Extension	2.85 in	Assembly/Box Mounting	F1/F2 CAPABLE
Outline Drawing	036395-800	Connection Drawing	A-EE7300



Uncontrolled Copy

THREE PHASE - SINGLE VOLTAGE  
MOTOR - CONDUIT BOX @ 'A'

TO REVERSE ROTATION:  
INTERCHANGE ANY TWO LINE  
LEAD CONNECTIONS

TERMINAL BLOCK WHEN SPECIFIED

IF MOTOR HAS 9 LEADS

T1(U1) T1(U1) T1(U1) → L1

T2(V1) T2(V1) T2(V1) → L2

T3(W1) T3(W1) T3(W1) → L3

IF MOTOR HAS 6 LEADS

T1(U1) T1(U1) → L1

T2(V1) T2(V1) → L2

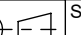
T3(W1) T3(W1) → L3

A-9806 DECAL



VIEW OF TERMINAL END

OPTIONAL CORD CONNECTION	
L1	WHITE
L2	RED
L3	BLACK

DRAWING REVISION AC	REVISION BY BS	REV DATE/© DATE 26/07/2022	PRIMARY DIMENSIONS ARE INCH mm DIMENSIONS IN [BRACKETS] ARE FOR REFERENCE ONLY	DRAWN BY DA	<div><div><div>Regal</div><div>Rexnord</div></div><div>Regal Beloit America, Inc.</div></div>			
REQUEST NUMBER CR-0010402	APPROVED BY SN	DATE 26/07/2022		DATE 03-26-1993				
REQUEST NUMBER DESCRIPTION DRAWING UPDATED				APPROVED BY TB	DESCRIPTION CONNECTION DIAGRAM EXTERNAL - SINGLE VOLTAGE - 3Ø MOTOR			
COPYRIGHT (PER REVISION DATE) REGAL BELOIT AMERICA, INC. ALL RIGHTS RESERVED. PROPRIETARY AND CONFIDENTIAL INFORMATION - THIS DOCUMENT IS THE PROPERTY OF REGAL BELOIT AMERICA, INC. ("OWNER") AND CONTAINS OWNER'S PROPRIETARY INFORMATION. ANY PERSON, CORPORATION OR OTHER FIRM RECEIVING IT IS DEEMED, BY RECEIVING IT, TO AGREE THAT IT, AND/OR ANY PART OF IT, SHALL NOT BE DISCLOSED TO ANY PERSON, CORPORATION OR OTHER ENTITY, DUPLICATED, AND/OR USED, EXCEPT AS EXPRESSLY APPROVED IN WRITING IN ADVANCE BY OWNER. THIS DOCUMENT SHALL BE RETURNED TO OWNER UPON REQUEST. IT MAY BE SUBJECT TO CERTAIN RESTRICTIONS UNDER APPLICABLE EXPORT CONTROL LAWS AND REGULATIONS.				DATE 03-26-1993				
				REFERENCE	MATERIAL		PROCESS/FINISH	
							THIRD ANGLE PROJECTION 	SIZE A



P.O. BOX 8003  
WAUSAU, WI 54401-8003  
PH. 715-675-3311

DATA VOLTS: 460

### CERTIFICATION DATA SHEET

CUSTOMER: \_\_\_\_\_ CUSTOMER P.O. #: \_\_\_\_\_  
ORDER #: \_\_\_\_\_ REFERENCE MODEL #: 182TTFN16584  
CONN. DIAGRAM: A-EE7300 CAT #: E380A  
OUTLINE: 035661-800 CUSTOMER PART #: \_\_\_\_\_  
WINDING: K182644 FS 2 MOUNTING: F1/F2 CAPABLE  
SPEED: \_\_\_\_\_

### TYPICAL MOTOR PERFORMANCE DATA

HP	KW	SYNC RPM	FL RPM	FRAME	ENCLOSURE	TYPE	KVA CODE	DESIGN
1.5	1.1	1200	1175	182T	TEFC	TFS	L	B

PH	HZ	VOLTS	AMPS	START TYPE	DUTY	INSL	S.F.	AMB	ELEV.
3	60/50	460#380	2.2&2.6	LINE OR INVERTER	CONT	F	1.15	40	3300

F.L. EFF	87.5	3/4 LD EFF	87.5	1/2 LD EFF	86.5	GTD EFF	86.5	ELECT. TYPE	SQ CAGE INV RATED
F.L. PF	71.5	3/4 LD PF	64.0	1/2 LD PF	52.0				

F.L. TORQUE	LR AMPS @ 460 V	L.R. TORQUE	B.D. TORQUE	F.L. RISE (°C)	
6.8 LB-FT	17.0	13.4 LB-FT 197%	24.4 LB-FT 359%	40	

@ 3 FT.	POWER	ROTOR WK²	MAX. LOAD WK²	SAFE STALL TIME	STARTS/HOUR	MOTOR WGT
55 dBA	64 dBA	0.38 LB-FT²	32 LB-FT²	25 SEC.	2	90 LB.

### \*\*\* SUPPLEMENTAL INFORMATION \*\*\*

DE BRACKET TYPE	ODE BRACKET TYPE	MOUNT TYPE	MOTOR ORIENTATION	SEVERE DUTY	HAZARDOUS LOCATION	DRIP COVER	SCREENS	PAINT
STANDARD	STANDARD	RIGID	HORIZONTAL	UM SEVERE	DIVISION 2 T2B	NO	NONE	BLUE (EPOXY)

BEARINGS	GREASE	SHAFT TYPE	SPECIAL DE	SPECIAL ODE	SHAFT MATERIAL	FRAME MATERIAL
DE ODE						
BALL BALL	POLYREX EM	T	NONE	NONE	1144 STRESSPROOF (C-223)	CAST IRON
6206 6206						

THERMOSTATS	PROTECTORS	WDG RTD's	BRG RTD's	THERMISTORS	CONTROL	SPACE HEATERS
NONE	NOT	NONE	NONE	NONE	FALSE	NA

R1 (ohms/ph)	R2 (ohms/ph)	X1 (ohms/ph)	X2 (ohms/ph)	Xm (ohms/ph)	VIBRATION (in/sec)	FLOAT
1.32	0.714	3.004	3.372	44.699	0.080	ODE

* N O T E S *		INVERTER TORQUE: CONSTANT 20:1 INV. HP SPEED RANGE: NONE
	ENCODER: NONE NONE NONE	NONE PPR

PREPARED BY: FAREEDA DUDEKULA	BRAKE: NONE NONE	NONE
DATE: 9/10/2018	FT-LB: NA	
	VOLTAGE: NONE	HZ:
FORM: 3531 REV_4 2/27/06	UL: V-INS, CONST UL REC	

## Data Sheet

Date: 12/4/2018

Customer: \_\_\_\_\_

Attention: \_\_\_\_\_

Submitted by: FAREEDA DUDEKULA

182TTFN16584



Submittal

Data @ 460 V

## Motor Load Data

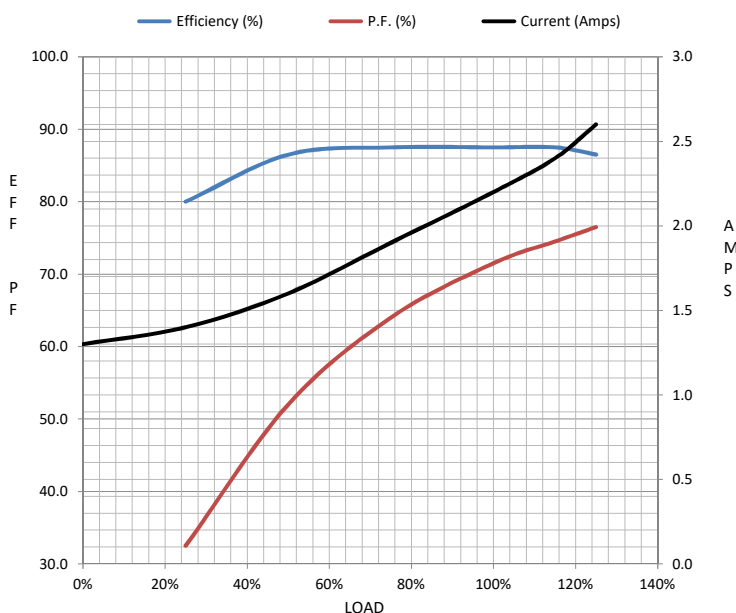
Load	0%	25%	50%	75%	100%	115%	125%	LR	
Current (Amps)	1.30	1.40	1.60	1.90	2.20	2.40	2.60	17.0	
Torque (ft-lb)	0.00	1.70	3.4	5.2	6.8	7.8	8.5	13.4	
RPM	1200	1195	1188	1182	1175	1,172	1168	0	
Efficiency (%)		80.0	86.5	87.5	87.5	87.5	86.5		
P.F. (%)	6.0	32.5	52.0	64.0	71.5	74.5	76.5	45.0	

## Motor Speed Data

	LR	Pull-Up	BD	Rated	Idle
Speed (RPM)	0	600	1050	1175	1200
Current (Amps)	17.0	15.0	8.2	2.20	1.30
Torque (ft-lb)	13.4	11.8	24.4	6.8	0.00

## Information Block

HP	1.5			
Sync. RPM	1200			
Frame	182			
Enclosure	TEFC			
Construction	TFS			
Voltage	460#380	V		
Frequency	60	Hz		
Design	B			
LR Code letter	L			
Service Factor	1.25			
Temp Rise @ FL	40	° C		
Duty	CONT			
Ambient	40	° C		
Elevation	1,000	feet		
Rotor/Shaft wk <sup>2</sup>	0.38	Lb-Ft <sup>2</sup>		
Ref Wdg	K182644	FS		
Sound Pressure @ 1M	55	dBA		
VFD Rating	CONSTANT 20:1			
Outline Dwg	035661-800			
Conn. Diag	A-EE7300			
Additional Specifications:				
0				
0				
EQUIV CKT (OHMS / PHASE)				
R1	R2	X1	X2	Xm
1.3200	0.7140	3.0040	3.3720	44.6990



## Speed -Torque Curve

